

# SPEEDTEC 505SP BR

---

Spare Parts .....	2
Figure A: Machine Assembly .....	3
Figure B: Machine Assembly .....	4
Figure C: Machine Assembly .....	5
Miscellaneous Items (not shown in figure A, B, C) .....	5
Electrical Schematic .....	6
Connection Diagram .....	7
WEEE .....	8



Lincoln Electric Bester Sp. z o.o.  
ul. Jana III Sobieskiego 19A, 58-263 Bielawa, Poland  
[www.lincolnelectric.eu](http://www.lincolnelectric.eu)

# Spare Parts

SP50296 REV00  
15/07

ASSEMBLY PAGE NAME			Machine Assembly	Machine Assembly	Machine Assembly	Miscellaneous Items		
CODE NO.:	K NO.:	FIGURE NO.:	A	B	C	-		
50296	K14116-3	SPEEDTEC 505SP BR	1	1	1	1		

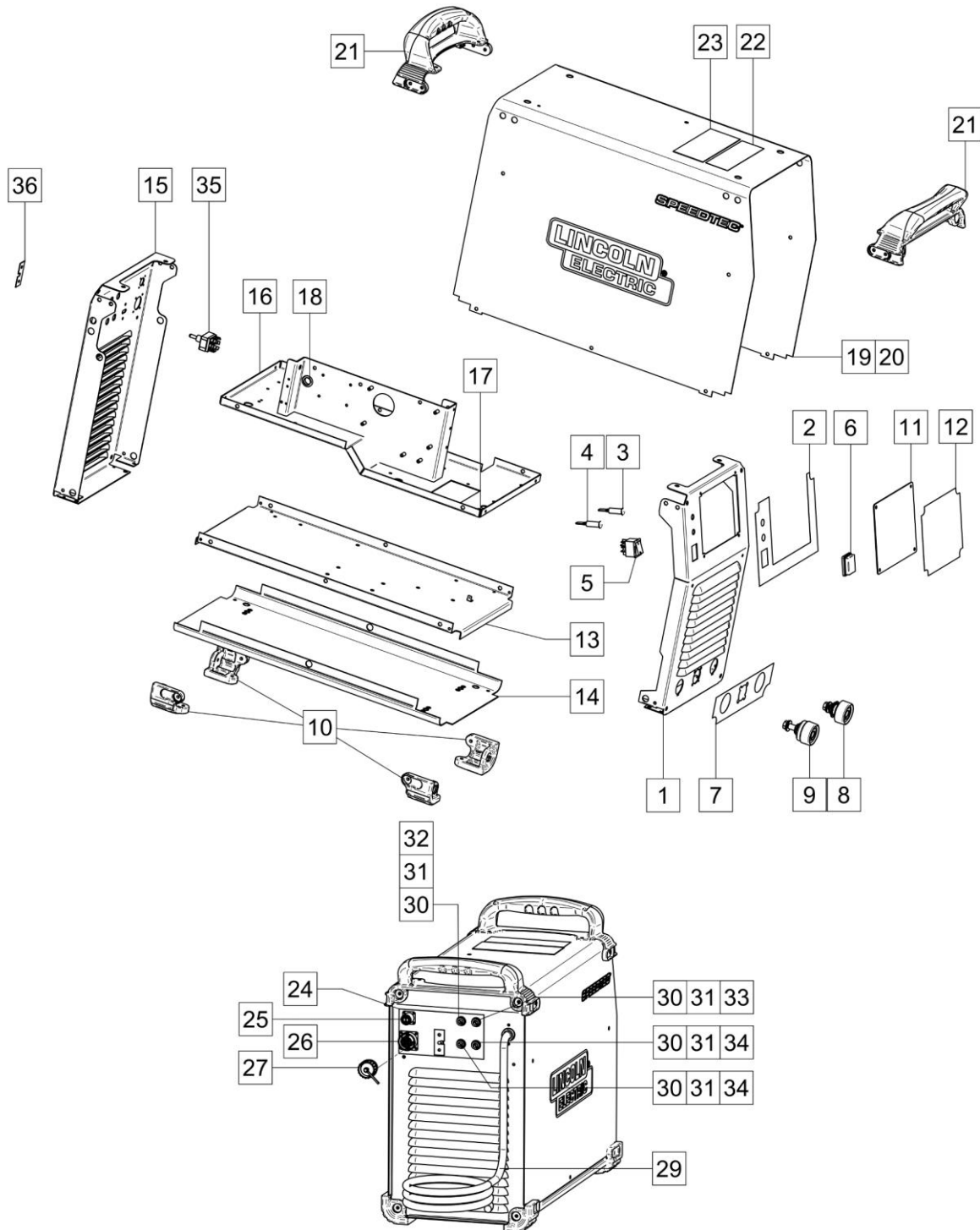


Figure A

**Figure A: Machine Assembly**

Item	Description	Part Number	QTY	1	2	3	4	5	6	7
1	FRONT PANEL	R-3019-302-1/08R	1	●						
2	STICKER	R-0010-505-3R	1	●						
3	LED LAMP V4	0917-421-043R	1	●						
4	LED LAMP V5	0917-421-009R	1	●						
5	SWITCH	1115-270-021R	1	●						
6	BLACK FRAME SHIELD	1115-299-073R	1	●						
7	STICKER	R-0010-507-1R	1	●						
8	SOCKET X1	C-2986-001-3R	1	●						
9	SOCKET X2	R-8040-349-1R	1	●						
10	CORNER CAP	W95X1147R	4	●						
11	COVER	R-1019-369-1/08R	1	●						
12	STICKER	R-0010-506-1R	1	●						
13	BASE PANEL	R-3019-300-1/08R	1	●						
14	COVER	R-3019-304-1/02R	1	●						
15	REAR PANEL	R-3019-303-1/08R	1	●						
16	SHELF	R-3019-301-1/08R	1	●						
17	RUBBER CABLE BUSH	1361-599-197R	2	●						
18	RUBBER CABLE BUSH	1373-182-002R	3	●						
19	COVER	R-1019-387-1R	1	●						
20	STICKER (ELECTRICAL SCHEMATIC)	R-0010-509-2R	1	●						
21	HANDLES	R-0010-292-1R	2	●						
22	STICKER	2719-107-728R	1	●						
23	STICKER	R-0010-332-1R	1	●						
24	STICKER	R-0010-508-1R	1	●						
25	SOCKET	1158-641-003R	1	●						
26	SOCKET	1158-641-014R	1	●						
27	NUT	1158-641-015R	1	●						
28	CABLE RELEIF	1361-599-674R	1	●						
29	POWER LEAD (5m)	D-5578-171-2R	1	●						
30	FUSE SOCKET	1158-632-032R	4	●						
31	FUSE CAP	1158-632-033R	4	●						
32	SLOW-BLOW FUZE F3	1158-660-012R	1	●						
33	SLOW-BLOW FUZE F4	1158-660-008R	1	●						
34	SLOW-BLOW FUZE F1, F2	1158-660-010R	2	●						
35	INPUT VOLTAGE SWITCH	1115-280-006R	1	●						
36	SWITCH INTERLOCK	R-1019-368-1/08R	1	●						

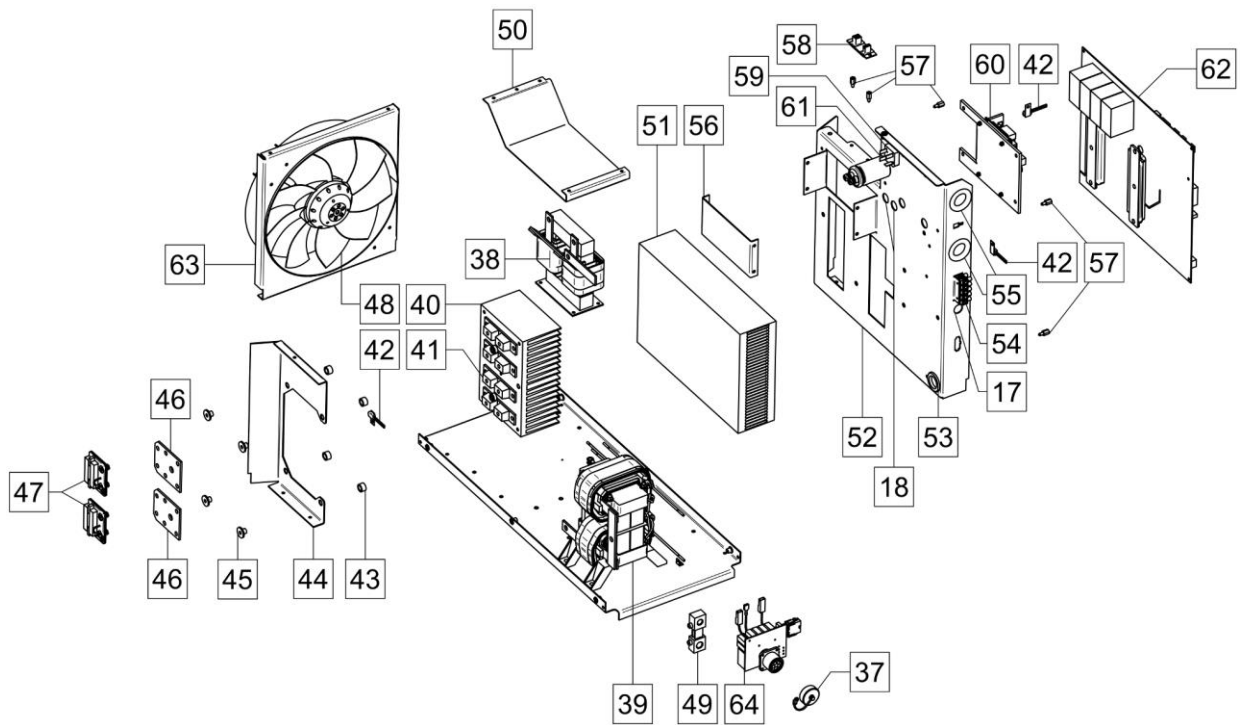


Figure B

**Figure B: Machine Assembly**

Item	Description	Part Number	QTY	1	2	3	4	5	6	7
37	NUT OF CONTROL RECEPTACLE	1158-641-128R	1	•						
38	CHOKE L1	R-4034-159-1R	1	•						
39	TRANSFORMER T1	R-4034-103-1R	1	•						
40	OUTPUT RECTIFIER HEATSINK	R-2013-120-2R	1	•						
41	DIODE MODULE ASSEMBLY	1156-113-314R	4	•						
42	TEMPERATURE SENSOR 80°C	1115-769-134R	3	•						
43	SLEEVES	1361-599-672R	4	•						
44	BRACKET	R-1012-554-1/08R	1	•						
45	SLEEVES	1361-599-671R	4	•						
46	SHORT-CIRCUITING SWITCH	R-3016-039-1R	2	•						
47	P.C. BOARDS	R-8040-341-1R	2	•						
48	FAN	R-8040-223-2R	1	•						
49	SHUNT	R-2013-138-1R	1	•						
50	COVER	R-1019-417-1/08R	1	•						
51	HEAT SINK	R-2013-143-1R	1	•						
52	DIVIDER	R-3016-037-1R	1	•						
53	RUBBER CABLE BUSH	1361-599-198R	1	•						
54	TERMINAL BLOCK X7	1131-990-005R	5	•						
55	RUBBER CABLE BUSHES	1373-111-331R	2	•						
56	COVER	R-1012-621-1R	1	•						
57	SLEEVES	1361-599-200R	5	•						
58	P.C. BOARD	R-8040-340-1R	1	•						
59	RECTIFIER	1156-112-100R	1	•						
60	P.C. BOARD ASSEMBLY (40VDC BUS POWER SUPPLY)	R-8040-348-1R	1	•						
61	CAPACITOR C2	1158-125-329R	1	•						
62	P.C. BOARD (SWITCH BOARD)	R-8040-342-3R	1	•						
63	FAN SHROUD	R-3019-306-1/08R	1	•						
64	P.C. BOARD (FILTER OUTPUT)	R-8040-339-1R	1	•						

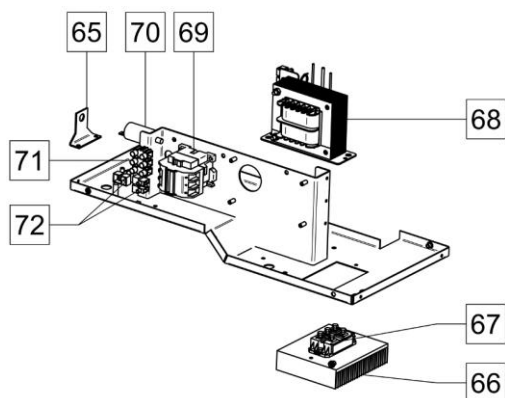


Figure C

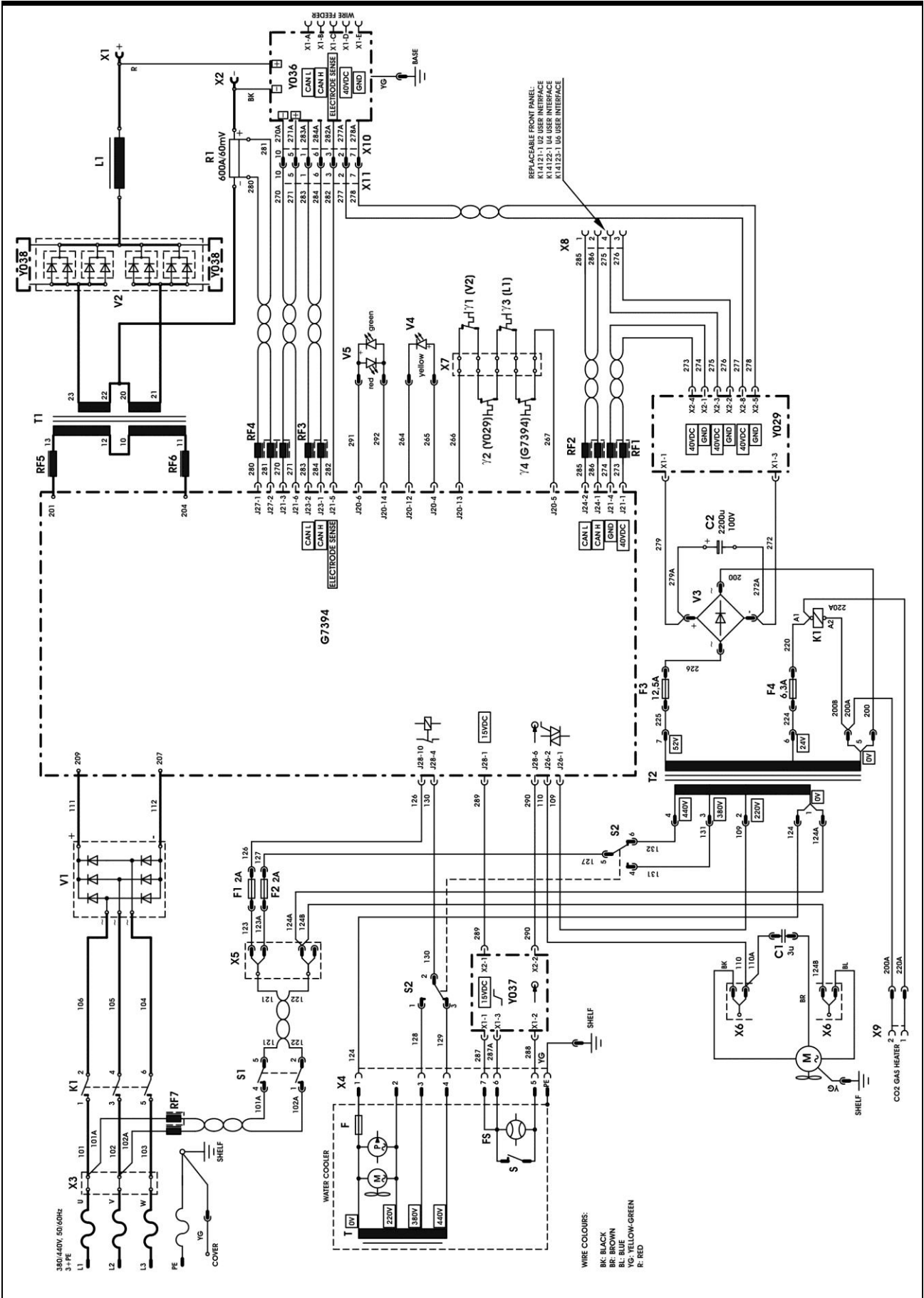
**Figure C: Machine Assembly**

Item	Description	Part Number	QTY	1	2	3	4	5	6	7
65	SWITCH BRACKET	R-1019-367-1/08R	1	•	•	•	•			
66	INPUT RECTIFIER HEATSINK	R-2013-127-1R	1	•	•	•	•			
67	INPUT RECTIFIER V1	M15454-14	1	•	•	•	•			
68	TRANSFORMER T2	R-4034-160-2R	1	•	•	•	•			
69	CONTACTOR K1	1115-212-210R	1	•	•	•	•			
70	CAPACITOR C1	1158-121-046R	1	•	•	•	•			
71	TERMINAL BLOCK X3	1131-990-011R	3	•	•	•	•			
72	TERMINAL BLOCKS X5, X6	1131-990-022R	2	•	•	•	•			

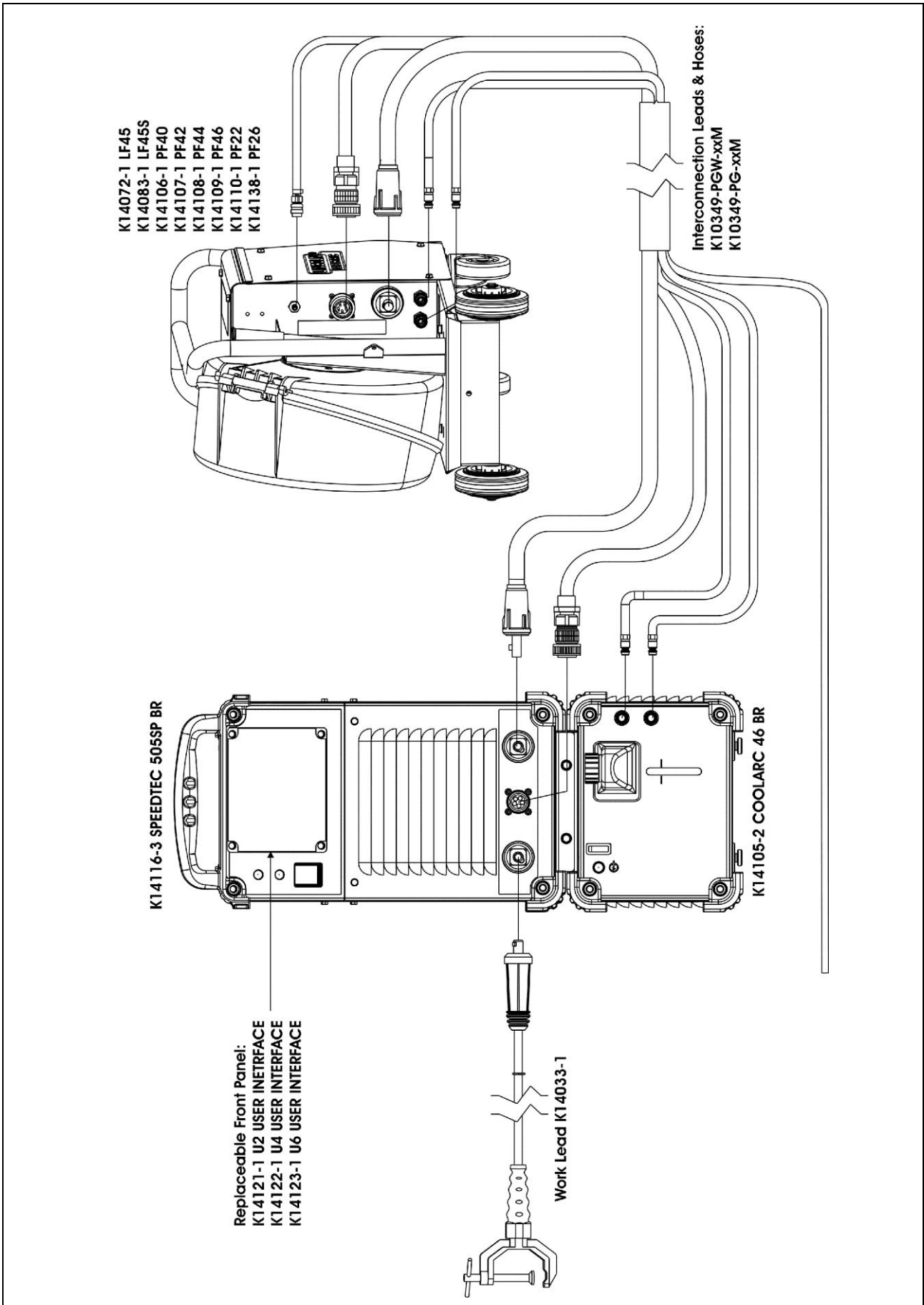
**Miscellaneous Items (not shown in figure A, B, C)**

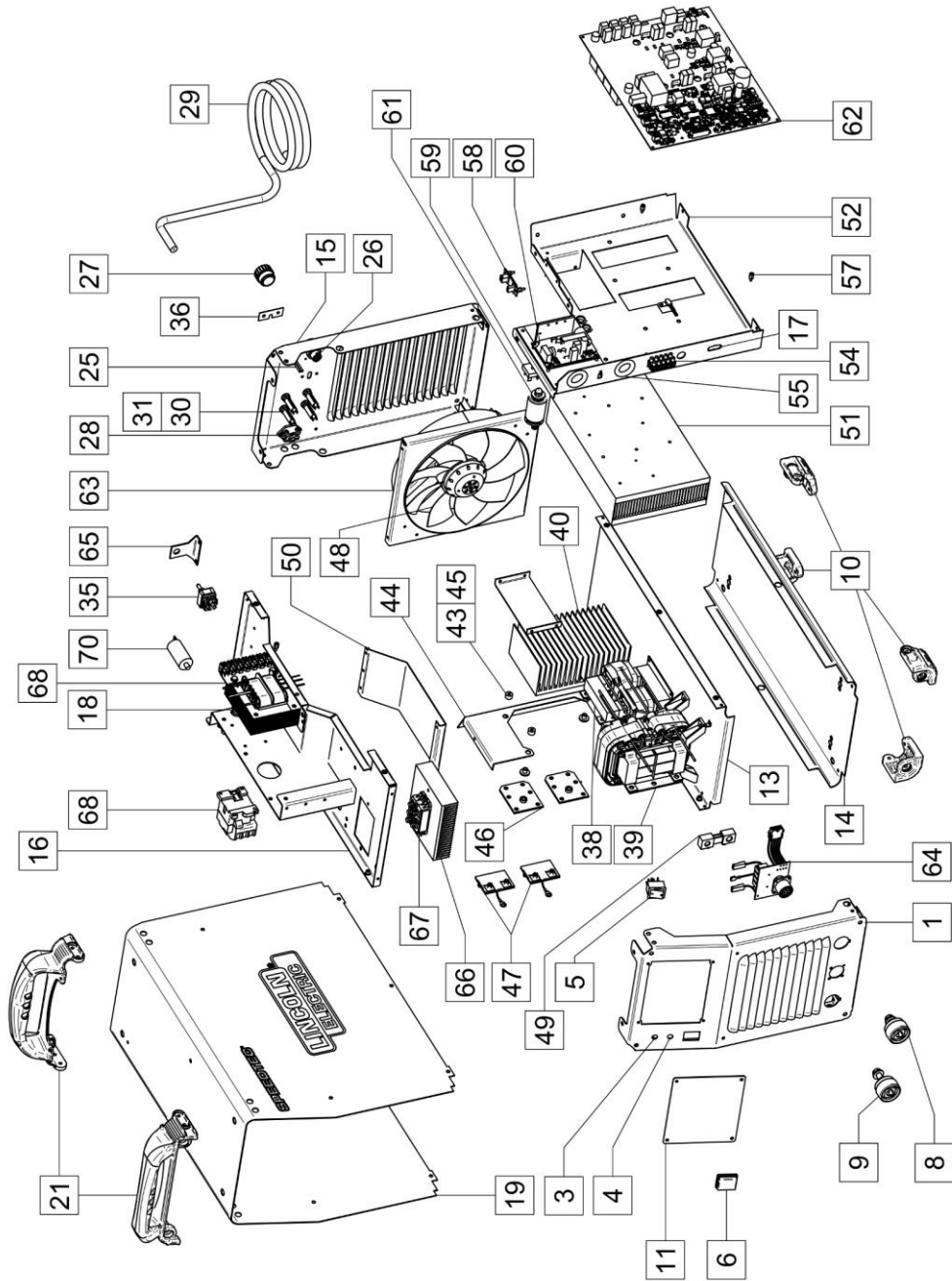
Item	Description	Part Number	QTY	1	2	3	4	5	6	7
73	WIRING HARNESS (PRIMARY A)	R-5041-299-2R	1	•	•	•	•			
74	WIRING HARNESS (PRIMARY B)	R-5041-300-2R	1	•	•	•	•			
75	WIRING HARNESS (SECONDARY A)	R-5041-302-1R	1	•	•	•	•			
76	WIRING HARNESS (SECONDARY B)	R-5041-303-1R	1	•	•	•	•			
77	WIRING HARNESS (COOLER)	R-5041-301-2R	1	•	•	•	•			
78	CONDUCTORS (TRANSFORMER T1 – RECTIFIER V2)	R-5041-195-2R	2	•	•	•	•			
79	CONDUCTOR (CHOKE L1 – RECTIFIER V2)	R-5041-336-1R	1	•	•	•	•			
80	CONDUCTOR (CHOKE L1 – SOCKET X1)	R-5041-294-2R	1	•	•	•	•			
81	CONDUCTORS (TRANSFORMER T1 – SHUNT R1)	R-5041-336-2R	1	•	•	•	•			
82	WIRING HARNESS WITH GAS HEATER SOCKET	R-5041-141-1R	1	•	•	•	•			

# Electrical Schematic



# Connection Diagram







Description	Ref.	Recycle				ST				
		Fe	Al	Cu	Brass	Boards	Plastics	Liquid Cristal	External Electric Cables	Capacitors
FRONT PANEL	1	X								
LED LAMPS	3, 4			X			X			
SWITCH	5, 35	X			X		X			
BLACK FRAME SHIELD	6						X			
SOCKETS	8, 9, 25, 26	X		X			X			
CORNER CAPS	10						X			
COVERS	11, 13, 50	X								
COVER	19		X							
P.C. BOARDS	47, 58, 60, 62, 64					X				
BASE PANEL	13	X		X						
CHOKE	39									
TRANSFORMERS	38, 68									
FAN SHROUD	63	X								
FAN	48	X		X					X	
SHUNT	49			X						
REAR PANEL	15	X								
SHELF	16	X								
RUBBER CABLE BUSH	17, 18, 55						X			
HANDLES	21						X			
HEATSINKS	40, 51, 66		X							
BRACKET	44	X								
SHORT-CIRCUITING SWITCHES	46			X						
SLEEVES	43, 45, 57						X			
SWITCH INTERLOCK	36	X								
RECTIFIER	59, 67	X					X			
TERMINAL BLOCK	54	X		X			X			
CAPACITORS	61, 70									X
CONTACTOR	69	X		X			X			
DIVIDER	52		X							
NUT	27						X			
CABLE RELEIF	28						X			
POWER LEAD	29								X	
FUSE SOCKETS & CAPS	30, 31	X					X			
SWITCH BRACKET	65	X								