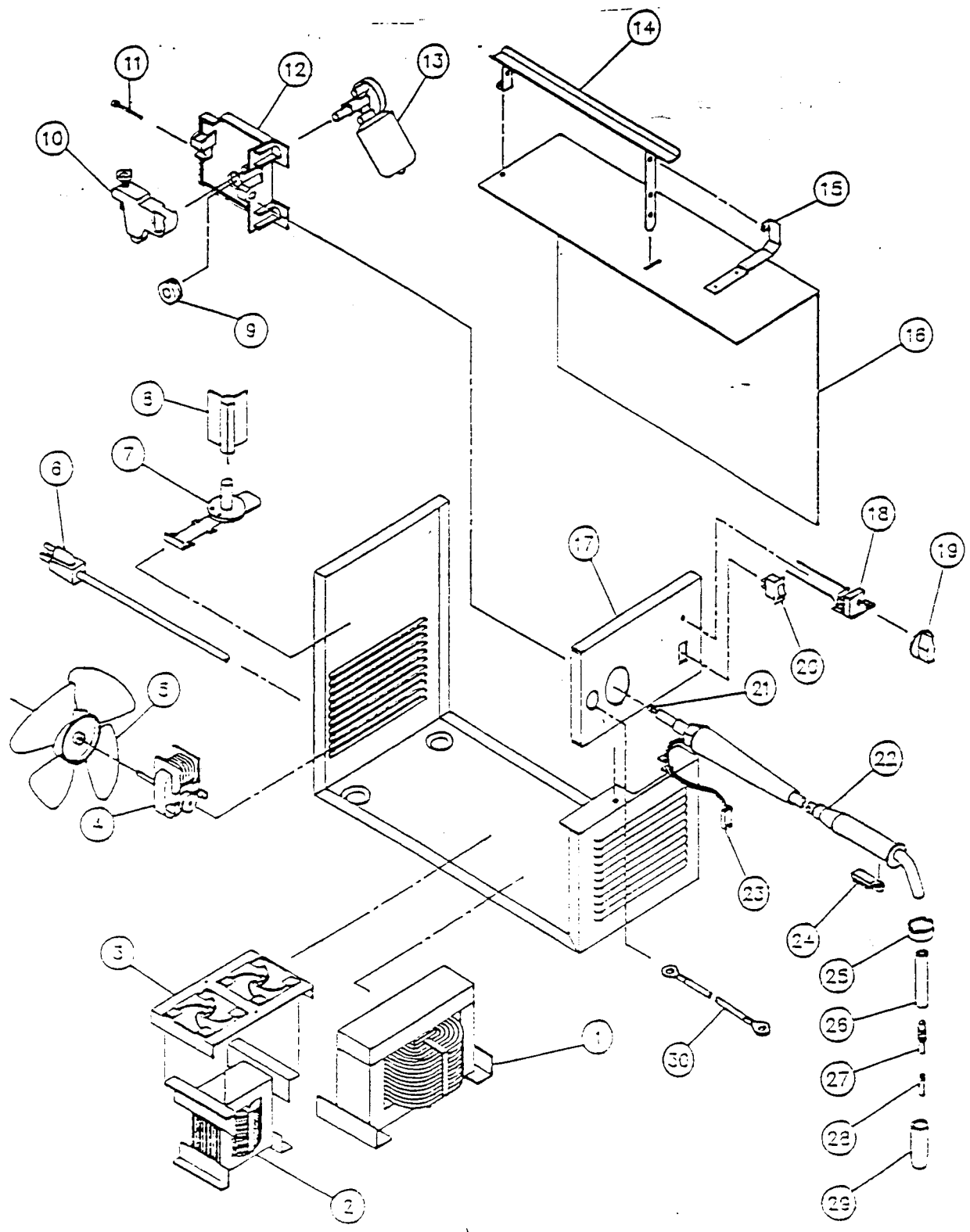


117-032, 20100, 58-8002, 6Z935(A)



117-032, 20100, 58-8002 75 Amp Flux Welder

Item	Lincoln Stock #	Customer #	Description
1	NLA	880-011-888, 880-084-888	Main weld transformer
2		880-010-888	Reactor Coil w/ thermostat
		246-310-000	Thermostat only
3	860-905-666	860-905-666	Rectifier assy.
4	216-087-666	216-087-666	Fan motor
5		316-009-000	Fan blade
6		248-185-666, 248-197-666	Power cord
7	312-076-666	312-076-666	Wire spindle
8	312-110-666	312-087-666	Spool adapter
9	310-122-500	4323	Drive roller, 0.024 / 0.030 / 0.035
	860-616-002	4324	Drive roller for aluminum
10	Included with # 12	880-089-666	Tension arm only
11	Included with # 12	239-123-666 239-208-000	Inlet guide tube
12	880-130-666	880-130-666	Drive base assy. w/arm
13	NLA	216-079-666	Drive Motor w/gearbox
14	NLA	880-012-010	Handle
15	NLA	412-278-010	Hood hinge
16	NLA	410-568-010	Right side panel
17	NLA	410-581-040	Front panel
18	880-094-666	880-094-666	Wire speed control assy
19	246-041-666	246-041-666	Knob
20		246-177-666	High-Off-Low rocker switch

Model	Primary Input	Input Plug	Duty Cycle at Rated Output
117-032	120V, 15 amp	15A	20%

Item	Lincoln Stock #	Customer #	Description
21	KP45-40-15	4331, KP1937-1	Steel liner
	KP1959-1	4325	Teflon liner
22	238-155-000	238-224-100	10' Mig Gun less tip & nozzle
23		860-744-000	Trigger harness
24	334-221-000	334-221-000	Trigger
	Standard Hardware Item		6-32 X 7/16" screw for trigger
25		334-219-000 (35-80A-1)	Handle Cap
26	Included with 334-227-000	334-217-000 (35-70)	Insulation
27	334-228-000	334-228-000	Gas diffuser
28	KP11-25, KH710	43090, 334-203-300, KP2039-1B1, M15522	0.025 Contact Tips
	KP11-30, KH711	43100, 334-160-300, KP2039-2B1, M15523	0.030 Contact Tips
29	KP21T-50, KH725	43480, 334-203-300, KP1942-1, M15578	Steel welding nozzle
	KP21T-62	43300, 334-210-300, KP1942-3	Aluminum welding nozzle
	KP21-62-FAS	43290, 334-211-300, KP1956-1, M15577	Spot welding nozzle
30		238-223-666	Ground cable assy.

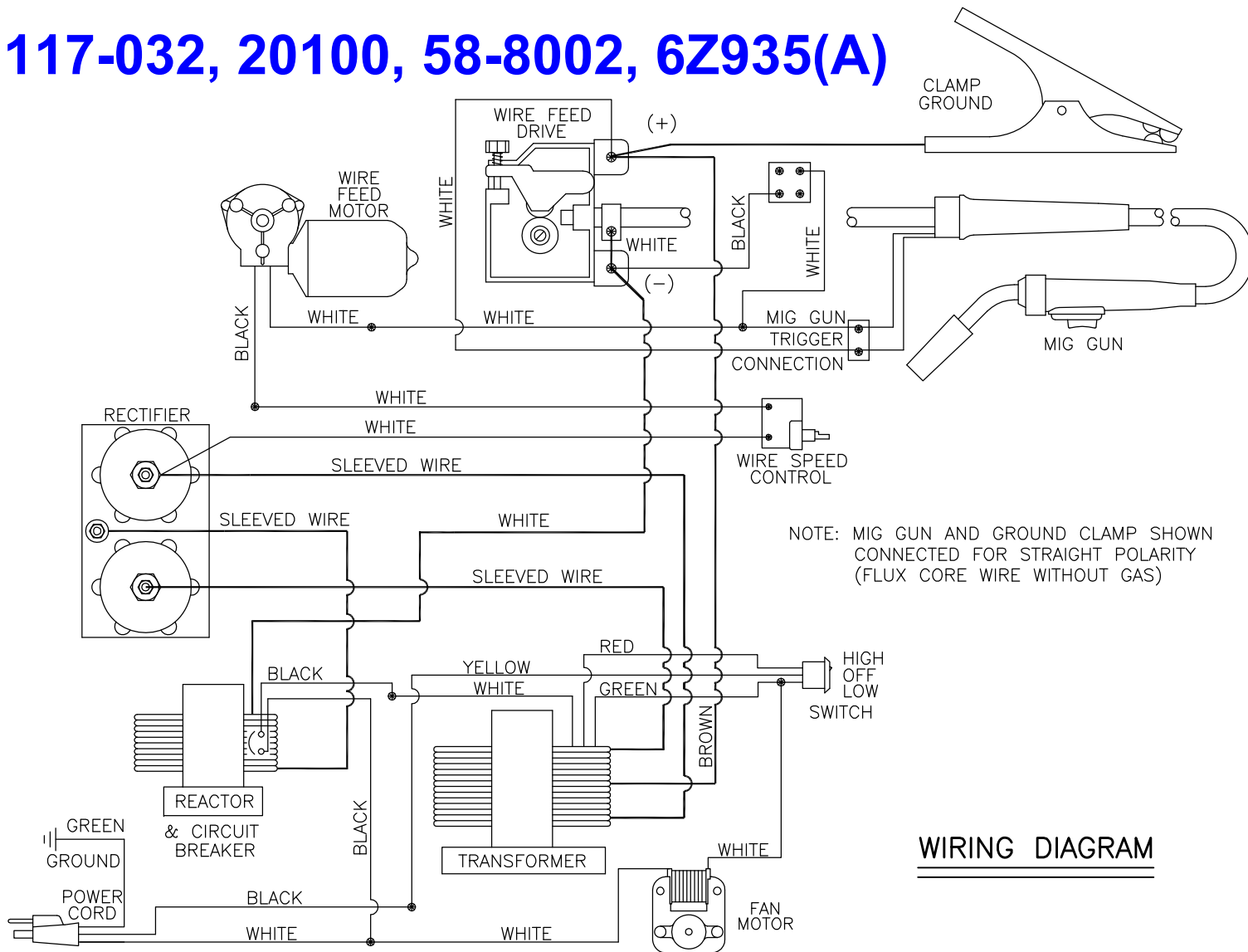
Not Shown

31	239-292-666	41007	Ground clamp
32	131-419-000	131-350-001	Tension kit
33		218-942-666	Polarity jumper
34		412-280-666	Gun connector block
35		2111	Gas conversion kit
36	T9078-3	084-022-666	Gun Retaining Thumb Screw (10-24)

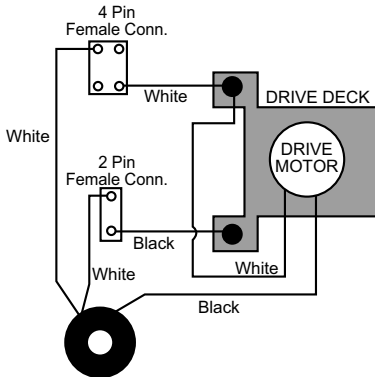
10/22/2009

Rated Output	Voltage Settings	Agency Listing	Max Output
75 amps	2 (low / high)	CSA	75 amps

117-032, 20100, 58-8002, 6Z935(A)



WIRING DIAGRAM



WIRE SPEED CONTROL
(Old Style, Ceramic)

Used on 117-032, 117-033, 117-034

