

GAS CYLINDER CABINETS

Gas cylinder cabinets are designed to provide a safe and effective means to isolate hazardous or flammable gas cylinders, when connected to a properly designed ventilation system, to exhaust hazardous or flammable gases to a remote location in order to protect personnel from exposure. The use of gas cabinets provides a convenient way to achieve separation of gases by their classifications to satisfy both national and local fire and building codes. The cylinder gas cabinets can safely store 1-4 standard size gas cylinders, are constructed of 11 gauge steel to exceed code requirements.

These cabinets can be fitted with manifolds, or the Harris EZ regulator mounting or other gas controls so that both the cylinder and the control system are enclosed. The cabinet has the capacity to allow 150–200 linear feet per minute of air to pass across the open window face to ensure that workers are not exposed.



Optional manifold sold separately

FEATURES

- All-welded construction using 11-gauge steel (exceeds code requirements) provides for extra structural strength.
- Epoxy painted texture finish on outside and smooth finish on inside enhances cabinet appearance.
- Louvered panel on base of door provides maximum coverage of air flow through cabinet.
- Removable back panel on inside rear of cabinet can be used to mount gas delivery systems.
- Adjustable cylinder bracket(s) with chain(s) accommodate a large range of cylinder sizes and secures cylinders.
- Door and access window close and latch automatically preventing them from being accidentally left open.

SPECIFICATIONS

Compliances:

Uniform Fire Code, Uniform Building Code, Federal OSHA, Cal OSHA, NFPA, SEMI Standards

Integral Sprinkler:

160–165°F Activation, Coated with Bee's Wax for Protection from Corrosive Environments

Window:

¼" thick wire reinforced safety glass

Finish:

Epoxy Coating

Color:

Blue (other colors are available)

Floor:

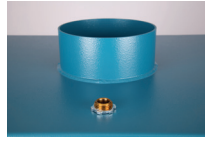
Diamond deck

Body of cabinet:

11-Gauge Steel

Fasteners:

Stainless Steel



**LARGE VENT EXHAUST
(6" DIAMETER X 3" HIGH)**



**INTEGRAL SPRINKLER THAT IS
ACTIVATED IN THE EVENT OF
FIRE**



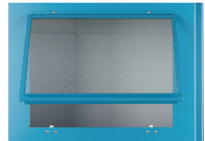
**LOUVERED DOOR PANEL TO
PROVIDE POSITIVE AIR FLOW**



**ADJUSTABLE CYLINDER
BRACKETS SECURE A WIDE
RANGE OF CYLINDERS**



**REMOVABLE BACK PANEL
ENABLES THE MOUNTING OF GAS
DELIVERY SYSTEMS AND COMPONENTS**



**LARGE SHATTER PROOF WINDOWS PERMIT
VISUAL INSPECTION AND ACCESS INTO CABINET
FOR ADJUSTMENTS WHILE MINIMIZING
OPERATOR EXPOSURE TO POTENTIAL TOXIC LEAKS**

**Contact Harris Specialty Gas for
quotes on custom gas cabinets.**

ORDERING INFORMATION

PART NO.	# OF CYLINDER	DIMENSIONS	ELECTRICAL
9030387	CABINET,7000 1CYL BLUE	18" W x 18" D x 72" H	235 lbs
9030388	CABINET,7000 2CYL BLUE	24" W x 18" D x 72" H	283 lbs
9030389	CABINET,7000 3CYL BLUE	36" W x 18" D x 72" H	331 lbs
9030390	CABINET,7000 4CYL BLUE	48" W x 18" D x 72" H	391 lbs
9030391	CABINET,7000 1CYL OUTDOOR BLUE	-	-
9030392	CABINET,7000 2CYL OUTDOOR BLUE	-	-
9030393	CABINET,7000 3CYL OUTDOOR BLUE	-	-
9030394	CABINET,7000 4CYL OUTDOOR BLUE	-	-
9030395	LOCK,CABINET DOOR	-	-
9030396	CAP,CABINET RAIN VENT	-	-