



Connection Guide

POWER WAVE[®]



Authorized Service and Distributor Locator:
www.lincolnelectric.com/locator

Need Help? Call 1.888.935.3877
to talk to a Service Representative

Hours of Operation:
8:00 AM to 6:00 PM (ET) Mon. thru Fri.

After hours?
Use "Ask the Experts" at lincolnelectric.com
A Lincoln Service Representative will contact you
no later than the following business day.

For Service outside the USA:
Email: globalservice@lincolnelectric.com

Service Parts:
parts.lincolnelectric.com

Power Wave 300C

(K4487-1)

(K4488-1)

(K4934-1)

(K4490-2)

EDTS109A | Issue Date Oct - 24

© Lincoln Global, Inc. All Rights Reserved.

THE LINCOLN ELECTRIC COMPANY
22801 St. Clair Avenue • Cleveland, OH • 44117-1199 • U.S.A.
Phone: +1.216.481.8100 • www.lincolnelectric.com

Table of Contents

MIG

Power Wave 300C + Magnum PRO Curve HDE 250.....	1
Power Wave 300C + Magnum PRO AL Push Pull Gun.....	2
Power Wave 300C + Magnum PRO 250LX GT Spool Gun.....	3
Power Wave 300C + Magnum PRO K126 Innershield Gun.....	4

TIG

Power Wave 300C + PTA-17.....	5
-------------------------------	---

Stick

Power Wave 300C + Stick Electrode Holder	6
--	---

Appendix

Wire Feeder Control Cables & Adapters	7
Electrode and Work Weld Cables	8

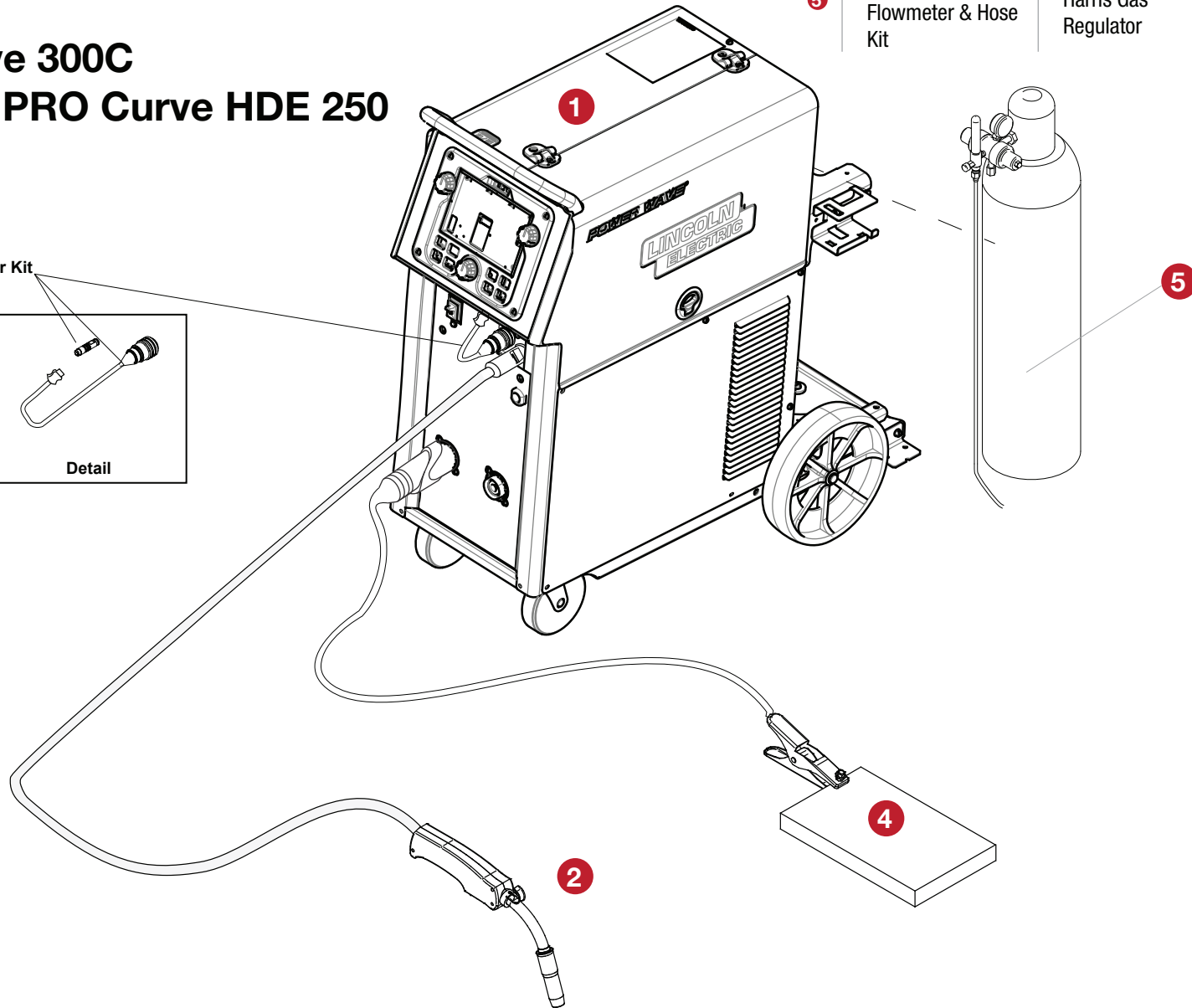
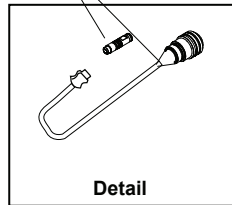


MIG (GMAW)

Power Wave 300C + Magnum PRO Curve HDE 250

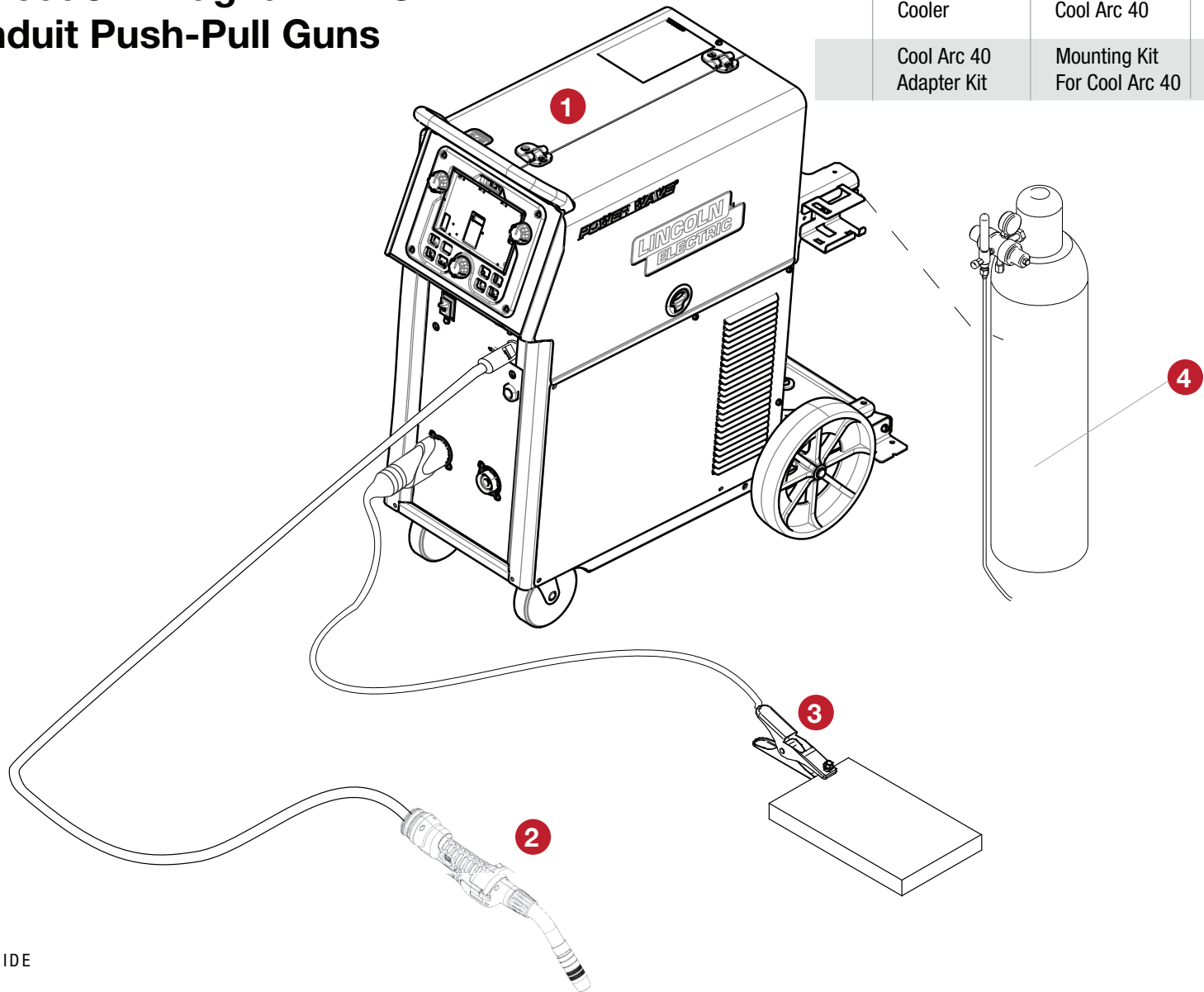
	ITEM	DESC.	K#
1	Machine	300C	K4487-1 or K4488-1
2	Gun	250A	K4531-2-6-45
3	Gun Connector	Gun Power	K466-6
4	Work	Twist Mate	
5	Regulator Flowmeter & Hose Kit	Harris Gas Regulator	K586-1

3 Adapter
Gun Connector Kit



MIG (GMAW)

Power Wave 300C + Magnum PRO AI Fixed Conduit Push-Pull Guns

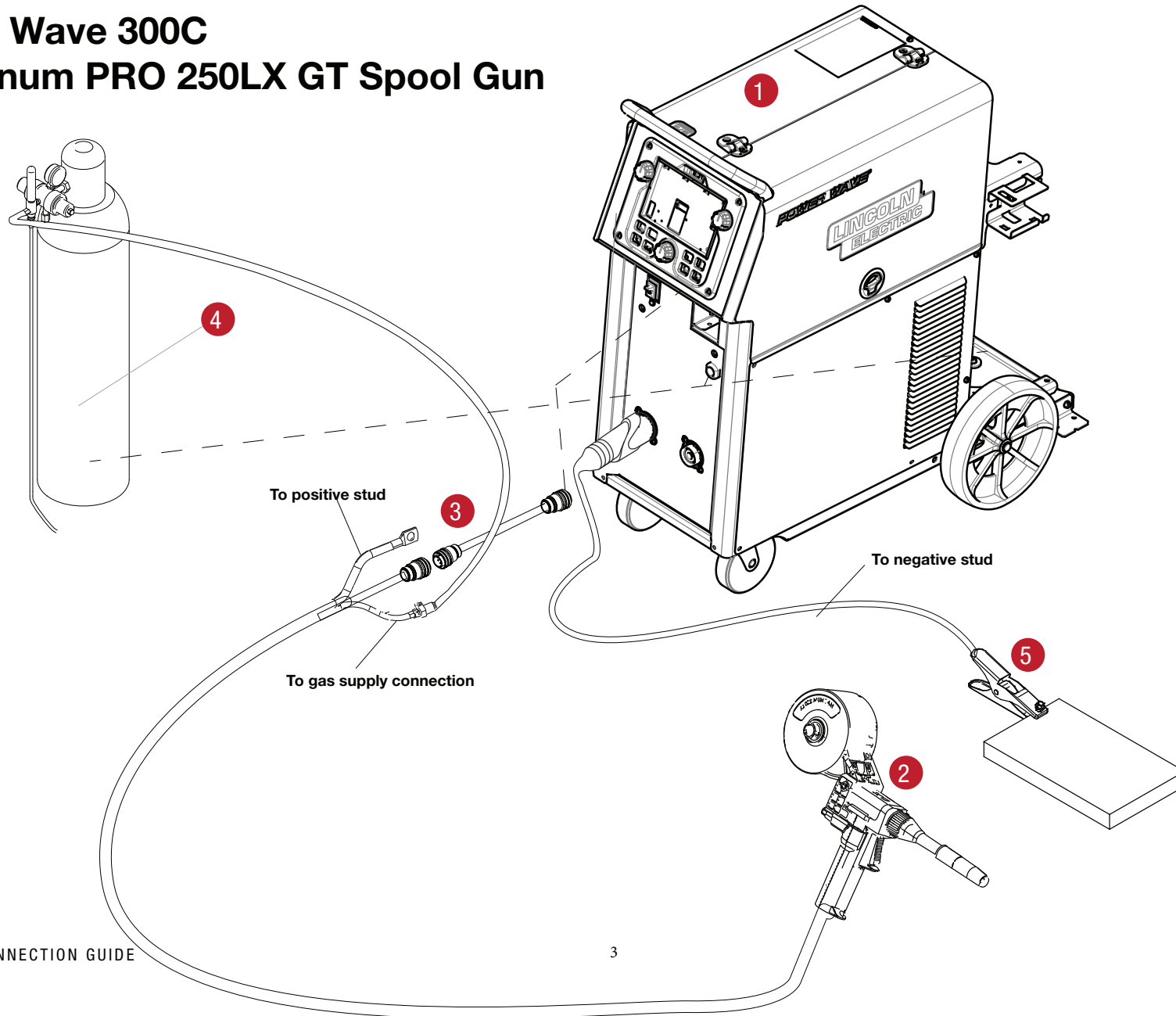


ITEM	DESC.	K#	
1	Machine	300C	K4487-1 or K4488-1
2	Gun	225A Push-Pull	K4797-X (Air Cooled) or K4798-X (Water Cooled)
3	Work	Twist Mate	
4	Regulator Flowmeter & Hose Kit	Harris Gas Regulator	K586-1
	Cooler	Cool Arc 40	K1813-1 (Water Cooled gun only)
	Cool Arc 40 Adapter Kit	Mounting Kit For Cool Arc 40	K4898-1

MIG (GMAW)

Power Wave 300C + Magnum PRO 250LX GT Spool Gun

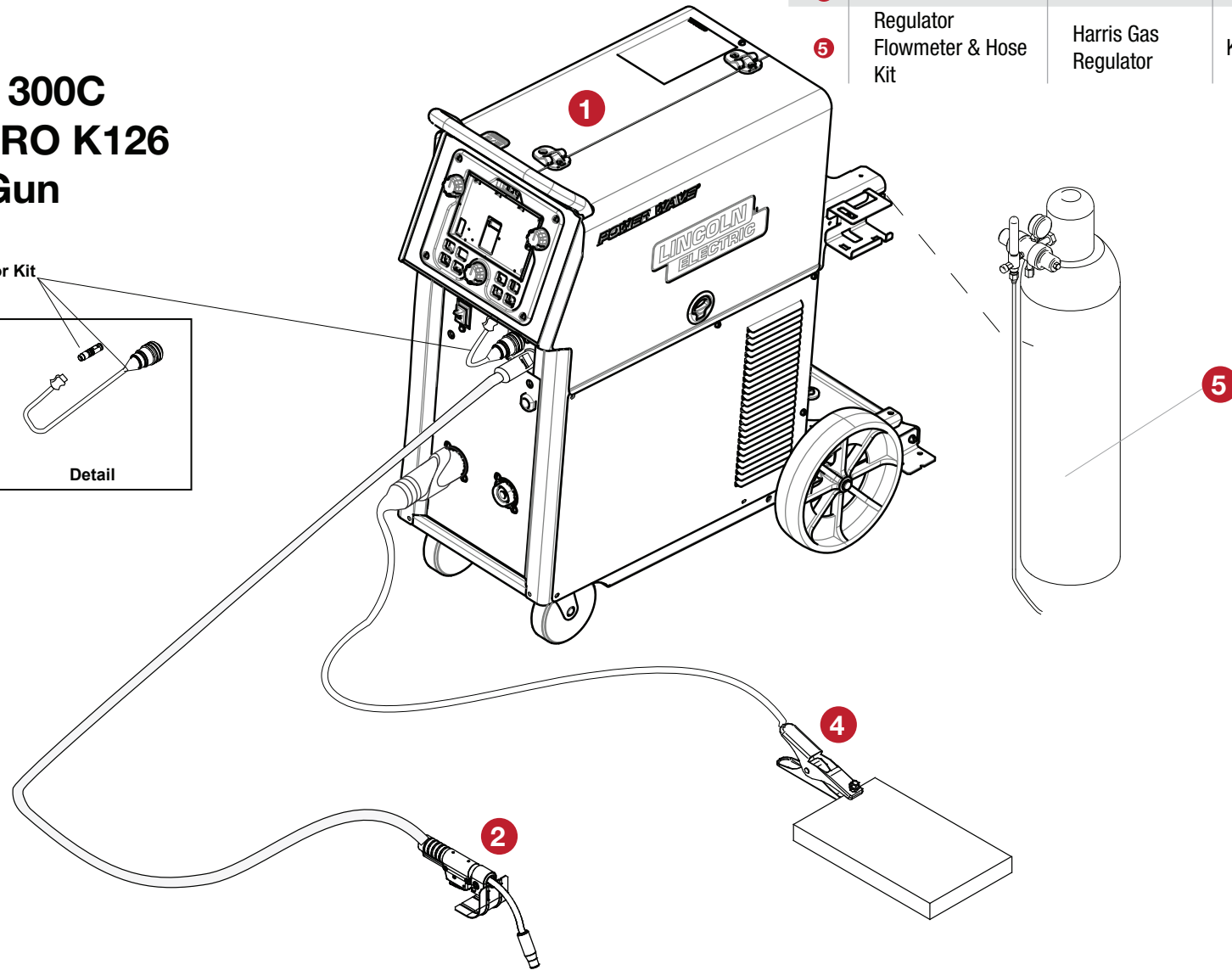
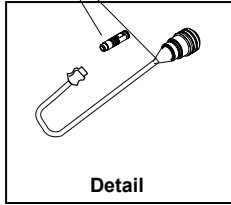
	ITEM	DESC.	K#
1	Machine	300C	K4487-1 or K4488-1
2	Gun	Spool Gun	K3569-2
3	Adapter	7-pin to 12-pin	K2910-1
4	Regulator Flowmeter & Hose Kit	Harris Gas Regulator	K586-1
5	Work	Twist Mate	



MIG (GMAW)

Power Wave 300C + Magnum PRO K126 Innershield Gun

3 Adapter
Gun Connector Kit

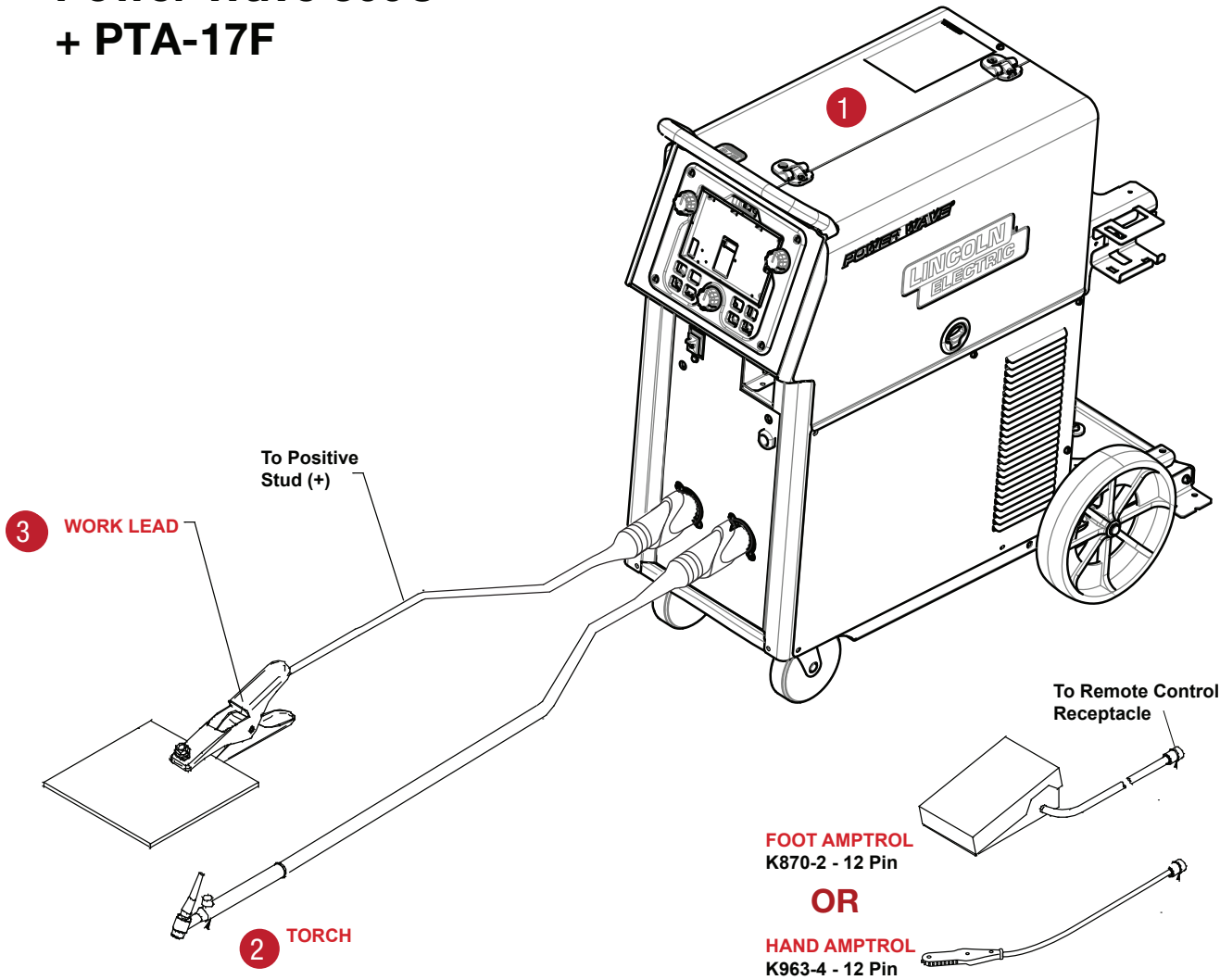


	ITEM	DESC.	K#
1	Machine	300C	K4487-1 or K4488-1
2	Gun	K126® PRO Innershield® Gun	K126-12
3	Gun Connector		K466-6
4	Work	Twist Mate	
5	Regulator Flowmeter & Hose Kit	Harris Gas Regulator	K586-1

TIG (GTAW)

Power Wave 300C + PTA-17F

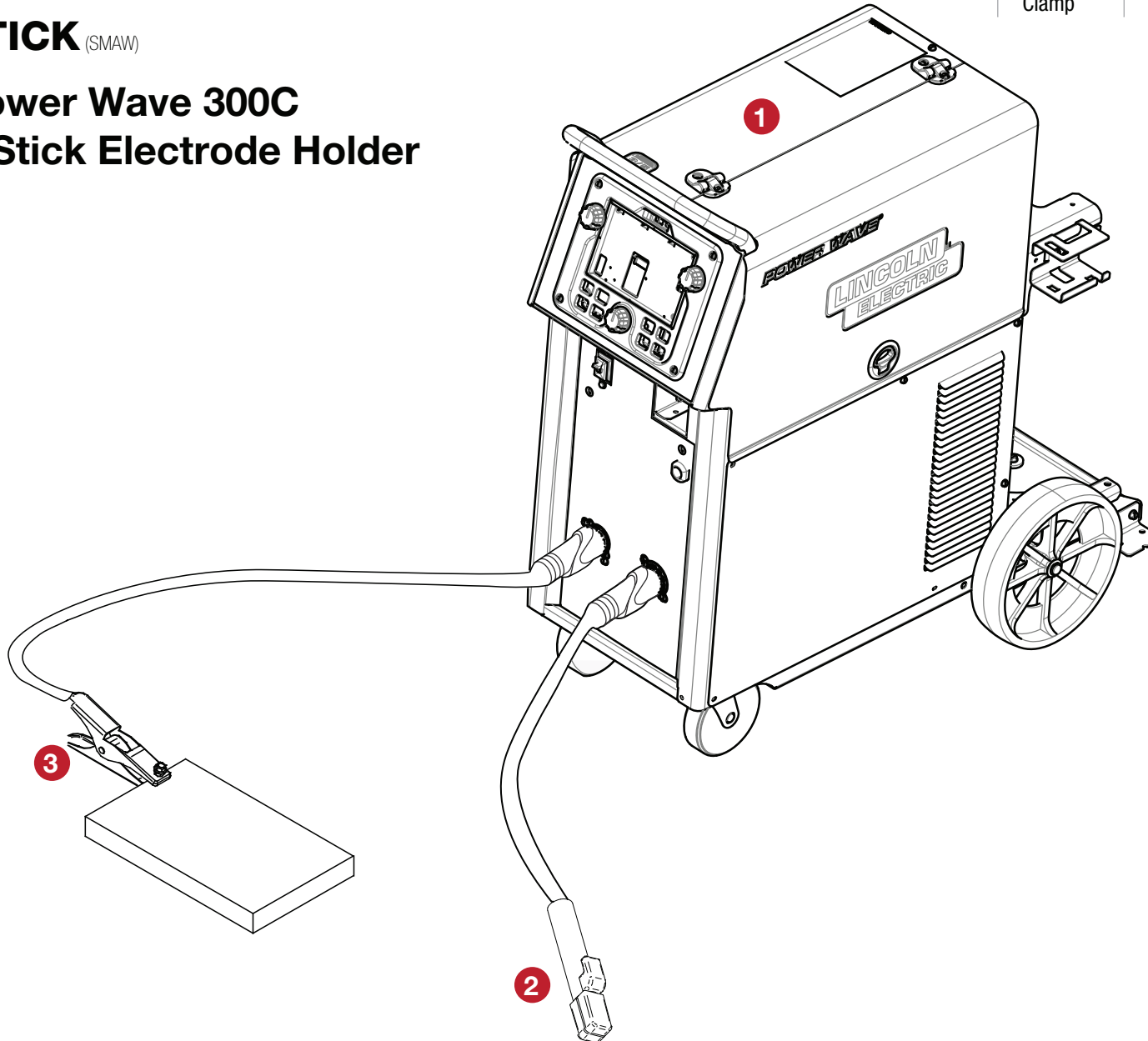
	ITEM	DESC.	K#	NOTES
1	Machine	300C	K4487-1 or K4488-1	
2	Torch	PTA-17F	K1782-14	
3	Work Cable	TwistMate		
	Switch	Foot Amptrol	K870-2	12 Pin
	Switch	Hand Amptrol	K963-4	12 Pin
	Switch (not pictured)	Arc Start Switch	K814-2	12 Pin



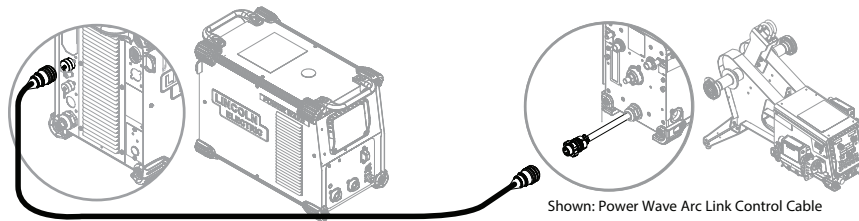
STICK (SMAW)

Power Wave 300C + Stick Electrode Holder

	ITEM	DESC.	K#
1	Machine	300C	K4487-1 or K4488-1
2	Stinger	Stick Electrode Holder	K2374-1
3	Work Cable and Ground Clamp	TwistMate	K2149-1



Control Cables & Adapters



	FEEDER/SYSTEM	PRODUCT NUMBER	LENGTH FT. (M)	CONNECTION	DESCRIPTION
ArcLink® Control Cables	ArkLink® Compatible Power Wave®, Power Feed®, and Flextec® systems	K1543-8	8 (2.4)	Male 5-pin to Female 5-pin	Standard ArcLink® Cable
		K4483-8	8 (2.4)	Male 5-pin to Female 5-pin	Ext-Flex ArcLink® Cable
		K4483-16	16 (4.9)		
		K4483-25	25 (7.6)		
		K4483-50	50 (15.2)		
		K4483-100	100 (30.4)		
		K2683-25	25 (7.6)		
		K2683-100	50 (15.2)		
		K4483-100	100 (30.4)		Heavy Duty ArcLink® Control Cable
Gun Adapters	Feed plate gun adapters compatible with FLEX FEED™ AND POWER FEED® series feeders	K3344-1	N/A	For Lincoln Electric Gun Connectors	Compatible Gun Connector Kits: K466-1, K613-1, K613-6, K466-8
		K3345-1 (comes installed on feeder)	N/A	For Tweco® #2 - #4 Gun Connectors	Compatible Gun Connector Kits: K466-10, K466-2, K466-6
		K3346-1	N/A	For Tweco® #5 Gun Connector	Compatible Gun Connector Kits: K613-7, K613-2
		K3347-1	N/A	For Miller® Electric Gun Connectors	Compatible Gun Connector Kits: K466-3, K613-3
		K3348-1	N/A	For OXO® Gun Connectors	N/A
		K3349-1	N/A	Magnum® Fast-Mate™	Requires use of K3344-1
		Maxtrac 2 & 4-ROLL Drive Rolls	Steel Wire Sizes (Includes Stainless Steel)	KP1696-030S	0.023-0.030 (0.6-0.8)
KP1696-035S	0.035 (0.9)				
KP1696-045S	0.045 (1.2)				
KP1696-052S	0.052 (1.4)				
KP1696-1	0.035, 0.045 (0.9, 1.2)				
KP1696-2	0.040 (1.0)				
KP1696-1/16S	1/16 (1.6)				
Cored Wire Sizes	KP1697-035C		0.030-0.035 (0.8-0.9)	N/A	N/A
	KP1697-045C		0.040-0.045 (1.0-1.2)		
	KP1697-052C		0.052 (1.4)		
	KP1697-1/16C		1/16 (1.6)		
Steel Or Cored Wire Sizes	KP1697-068		0.068-0.072 (1.8)	N/A	N/A
	KP1697-5/64		5/64 (2.0)		
	KP1697-3/32		3/32 (2.4)		
Aluminum Wire Sizes	KP1695-035A		0.035 (0.9)	N/A	N/A
	KP1695-040A		0.040 (1.0)		
	KP1695-3/64A		3/64 (1.2)		
	KP1695-1/16A		1/16 (1.6)		

Electrode and Work Weld Cables

CONNECTION	PRODUCT NUMBER	LENGTH FT. (M)	DESCRIPTION
Twist Mate™ to Lug	K1840-10	10 (3.1)	Weld Power Cable, 1/0, 350A, 60% duty cycle
Lug to Lug	K1842-10	10 (3.1)	Weld Power Cable, 3/0, 600A, 60% duty cycle
	K1842-35	35 (10.7)	Weld Power Cable, 3/0, 600A, 60% duty cycle
	K1842-60	60 (18.3)	Weld Power Cable, 3/0, 600A, 60% duty cycle
	K1842-110	110 (33.5)	Weld Power Cable, 4/0, 600A, 60% duty cycle
Twist Mate™ to Twist Mate™	K1841-25	25 (7.6)	Weld Power Cable, 1/0, 350A, 60% duty cycle
	K1841-50	50 (15.2)	Weld Power Cable, 2/0, 350A, 60% duty cycle
Lug to Lug	K2163-35 ⁽¹⁾	35 (10.7)	Weld Power Cable, 4/0
	K2163-60 ⁽¹⁾	60 (18.3)	Weld Power Cable, 4/0
Lug to Lug	K1796-25	25 (7.6)	Coaxial Weld Power Cable, 1/0, 350A, 60% duty cycle
	K1796-50	50 (15.2)	Coaxial Weld Power Cable, 1/0, 350A, 60% duty cycle
	K1796-75	75 (22.8)	Coaxial Weld Power Cable, 1/0, 325A, 60% duty cycle
	K1796-100	100 (30.4)	Coaxial Weld Power Cable, 1/0, 300A, 60% duty cycle
Lug to Lug	K2593-100	100 (30.4)	Coaxial Weld Power Cable, #1, 250A, 100% duty cycle

⁽¹⁾ Two cables per package.



K1842-10



K1841-25



K1796-25

CUSTOMER ASSISTANCE POLICY

HyperFill® Waveform Activation Capability with Power Wave® and PIPEFAB™ Systems

Your purchase of a Lincoln Power Wave Welding System comes with (i) a license to use Lincoln Electric standard Power Wave waveforms, and (ii) HyperFill waveform capability, which requires a separate license. Without the separate license, the HyperFill waveform is not available for use on these machines, and only the standard Power Wave waveforms are usable.

The business of The Lincoln Electric Company is manufacturing and selling high quality welding equipment, consumables, and cutting equipment. Our challenge is to meet the needs of our customers and to exceed their expectations. On occasion, purchasers may ask Lincoln Electric for advice or information about their use of our products. We respond to our customers based on the best information in our possession at that time. Lincoln Electric is not in a position to warrant or guarantee such advice, and assumes no liability, with respect to such information or advice. We expressly disclaim any warranty of any kind, including any warranty of fitness for any customer's particular purpose, with respect to such information or advice. As a matter of practical consideration, we also cannot assume any responsibility for updating or correcting any such information or advice once it has been given, nor does the provision of information or advice create, expand or alter any warranty with respect to the sale of our products.

Lincoln Electric is a responsive manufacturer, but the selection and use of specific products sold by Lincoln Electric is solely within the control of, and remains the sole responsibility of the customer. Many variables beyond the control of Lincoln Electric affect the results obtained in applying these types of fabrication methods and service requirements.

Subject to Change – This information is accurate to the best of our knowledge at the time of printing. Please refer to www.lincolnelectric.com for any updated information.



THE LINCOLN ELECTRIC COMPANY

22801 St. Clair Avenue • Cleveland, OH • 44117-1199 • U.S.A.

Phone: +1.216.481.8100 • www.lincolnelectric.com