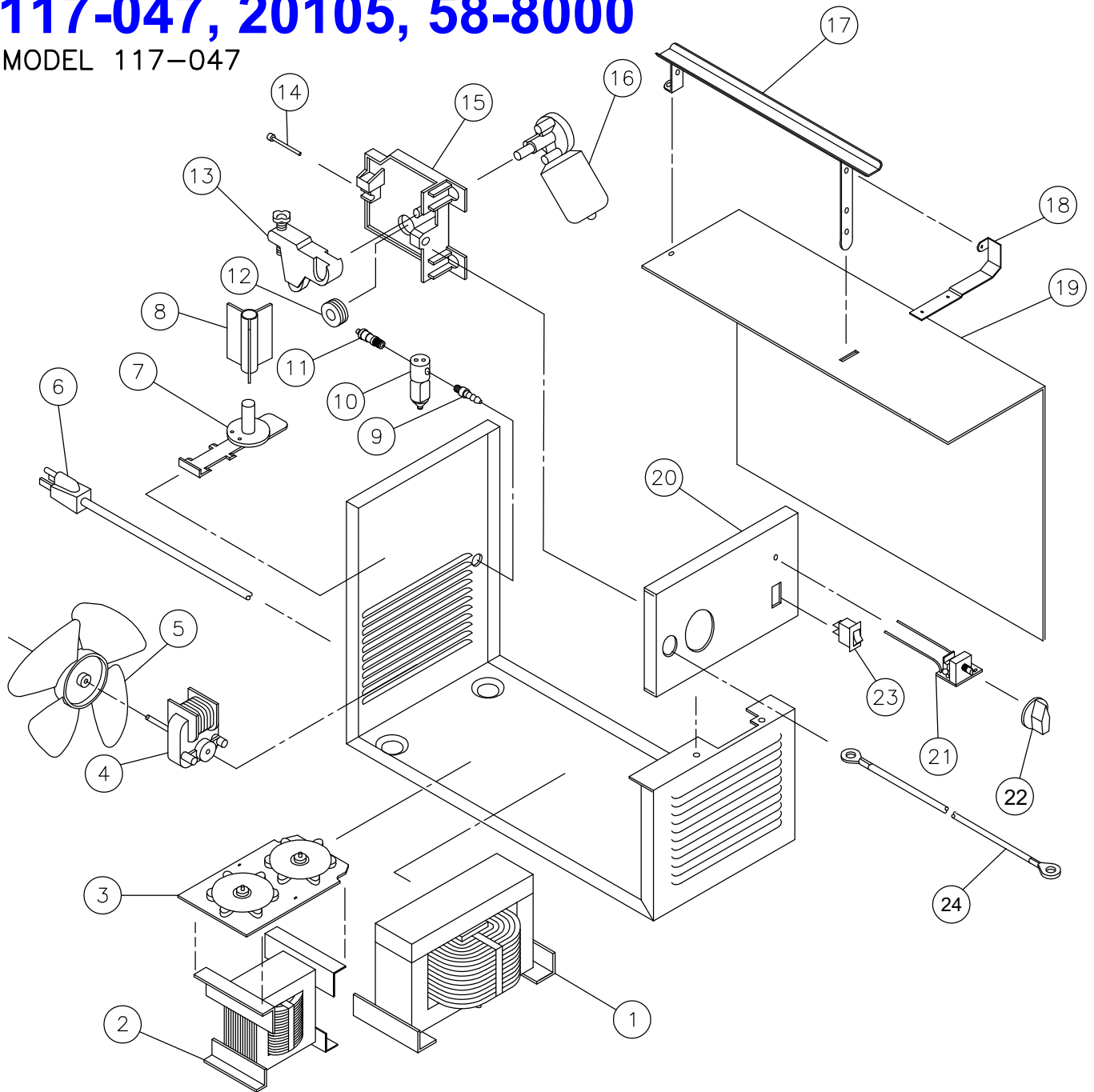


117-047, 20105, 58-8000

MODEL 117-047



117-047, 20105, 58-8000

Item	Lincoln Stock #	Customer #	Description
1		880-011-888	Main weld transformer
2		880-010-888	Reactor Coil w/ thermostat
		246-310-000	Thermostat only
3	860-905-666	860-905-666	Rectifier assy.
4	216-087-666	216-087-666	Fan motor
5		316-009-000	Fan blade
6		248-185-666	Power cord
7	312-076-666	312-076-666	Wire spindle
8	312-110-666		Spool adapter
	131-419-000	131-350-001	Tension kit
9		253-018-666	Fitting
10	246-086-666	246-086-666	Gas Solenoid
11		253-038-000	Fitting
12	310-122-500	4323	Drive roller, 0.024 / 0.030 / 0.035
13		880-089-666	Tension arm only
14		239-123-666 239-208-000	Inlet guide tube
15	880-130-666		Quick release drive base assy. (includes 13-15)
16	216-079-666	216-079-666	Drive Motor w/gearbox
17		880-012-010	Handle

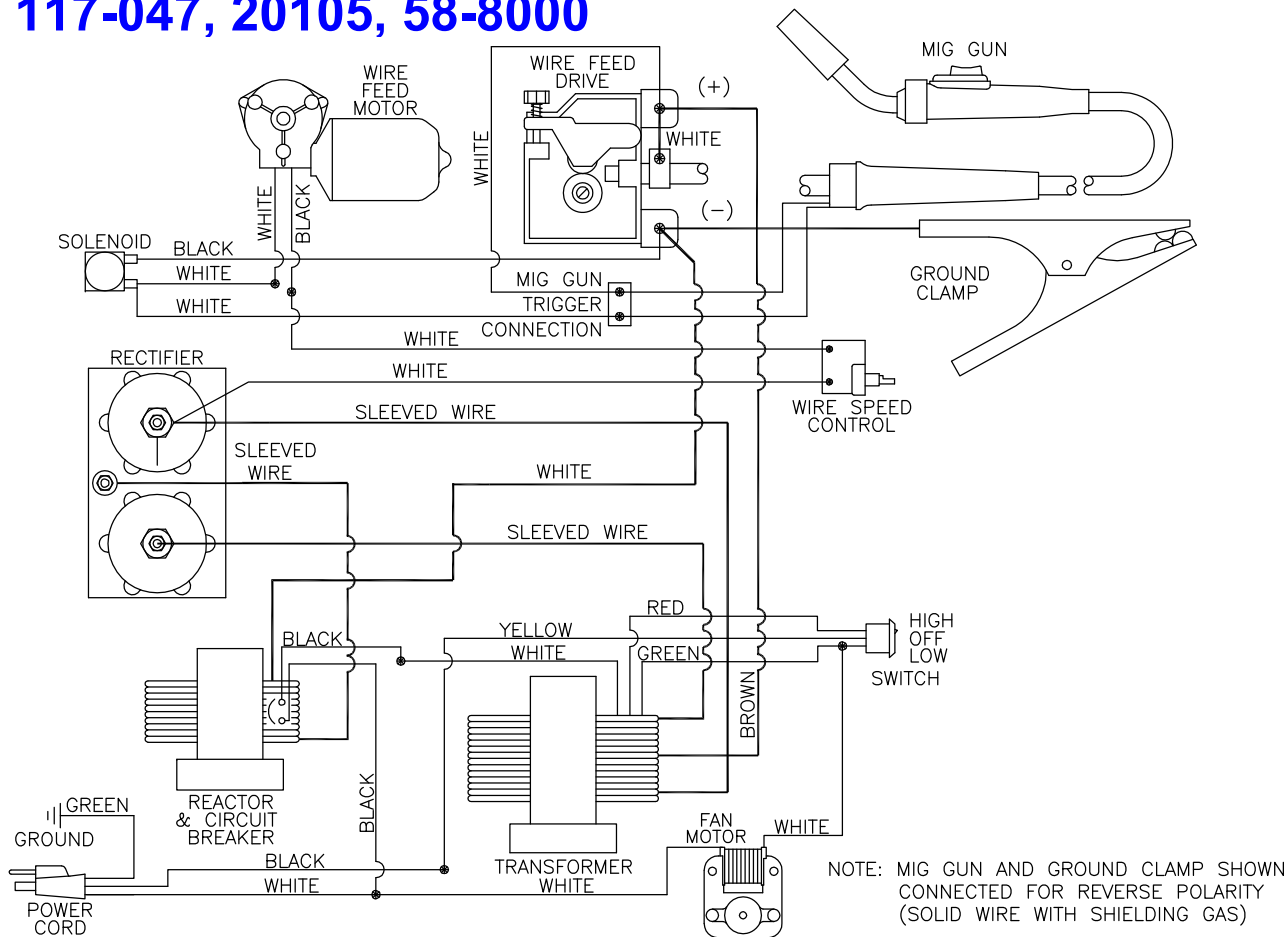
Model	Primary Input	Input Plug	Duty Cycle at Rated Output
117-047	120V, 15 amp	15A	20%

Item	Lincoln Stock #	Customer #	Description
18		412-278-010	Hood hinge
19		410-586-010	Right side panel
20		410-623-040	Front panel
21	880-094-666	880-094-666	Wire speed control assy
22	246-041-666	246-041-666	Knob
23		246-177-666	High-Off-Low rocker switch
24		238-223-666	Ground cable assy.
Not Shown			
25		410-557-010	Left side panel
26		410-575-010	Hood
27		218-942-666	Polarity jumper
28		412-280-666	Gun connector block
29	238-155-000	238-224-100	Mig Gun
	KP1937-1	4331	Steel liner
	KP1959-1	4325	Teflon liner
30	239-010-300	41000	Ground clamp
31	334-286-666	334-286-666	Regulator
32	059-245-666	059-089-000	Gas hose

3/9/2006

Rated Output	Voltage Settings	Agency Listing	Max Output
75 amps	2 (low / high)	CSA	75 amps

117-047, 20105, 58-8000



117-047, 20105, 58-8000

