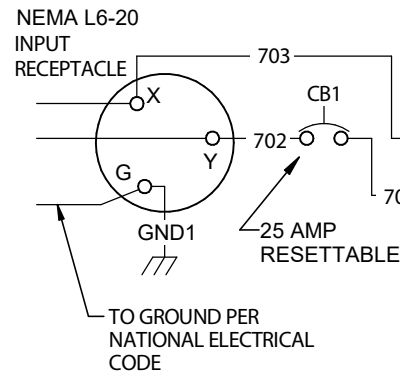


POWER MIG 210MP MACHINE SCHEMATIC M25122 REV: B

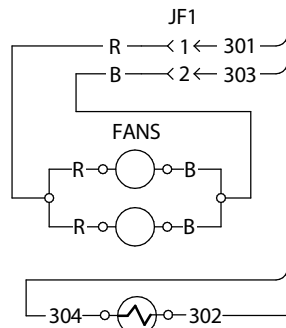
TWO 6 FOOT INPUT CORDS PROVIDED.
 115 VOLT: NEMA L6-20R TO NEMA 5-15P
 230 VOLT: NEMA L6-20R TO NEMA 6-50P



POWER CONTROL BOARD

- (ON BACK SIDE OF BOARD)
- GREEN LED IS ON WHEN POWER IS APPLIED TO BOARD
 - YELLOW LED TOGGLES EVERY 2 SECONDS TO SHOW CLOCK IS RUNNING
 - RED LED IS ON WHEN OUTPUT VOLTAGE IS ON

LOCATED ON BACK
 FANS ACTIVE WHEN MACHINE IS ON.
 TWO 24 VOLT FANS IN PARALLEL.
 AIR FLOW REAR TO FRONT.



LOCATED ON BACK
 24VDC PRESENT
 WHEN TRIGGERED

XX OHMS
 WHEN MEASURED
 WITH OHM METER
 (≈ 55)

