

PROGRAM EDITOR SETUP

NO. P95577003

EDITION : EN
REVISION : E
DATE : 06-2023

Instructions for use

REF. : **8695 5514**

Original instructions

Thank you for the trust you have expressed by purchasing this equipment, which will give you full satisfaction if you follow its instructions for use and maintenance.

Its design, component specifications and workmanship comply with applicable European directives.

Please refer to the enclosed CE declaration to identify the directives applicable to it.

The manufacturer shall not be liable if the product is used in association with items not recommended by the manufacturer.

For your safety, below is a non-limitative list of recommendations or requirements, many of which appear in the labour code.


Lastly, please inform your supplier of any error you may find in this instruction manual.


CONTENTS


A - DESCRIPTION5


B - INSTALLING THE SOFTWARE6

C - STARTING SCREEN.....8
 MAIN FEATURES8

D - EDITING A PROGRAM 9
 1 - SELECTING THE PROGRAM9
 2 - DEFINING EDITING ZONES10
 3 - OPTIONAL FUNCTIONS11

E - SAVING A PROGRAM 12
 1 - SAVE CURRENT PROGRAM12
 2 - SAVE AS.....12

F - EXPORTING A PROGRAM 13
 1 - EXPORT FILE FORMAT.....14

G - CHANGING THE LANGUAGE 15

PERSONAL NOTES16

REVISIONS

REVISION B**06/14**

DESCRIPTION	PAGE
Maximum program number 50 => 99	11

REVISION C**05/18**

DESCRIPTION	PAGE
Change logos	

REVISION D**10/18**

DESCRIPTION	PAGE
Installation for non administrator user	7

REVISION E**06/23**

DESCRIPTION	PAGE
Linc-Master installation added	

A - DESCRIPTION



Program Editor Setup is intended for the following installations:

- **NERTAMATIC 450 Plus**
- **LINC-MASTER**

This editor is used for:

- reading a program file,
- editing a program file,
- importing a modified program file into the installation via USB.
- exporting a program file in Excel format to allow printing and archival.

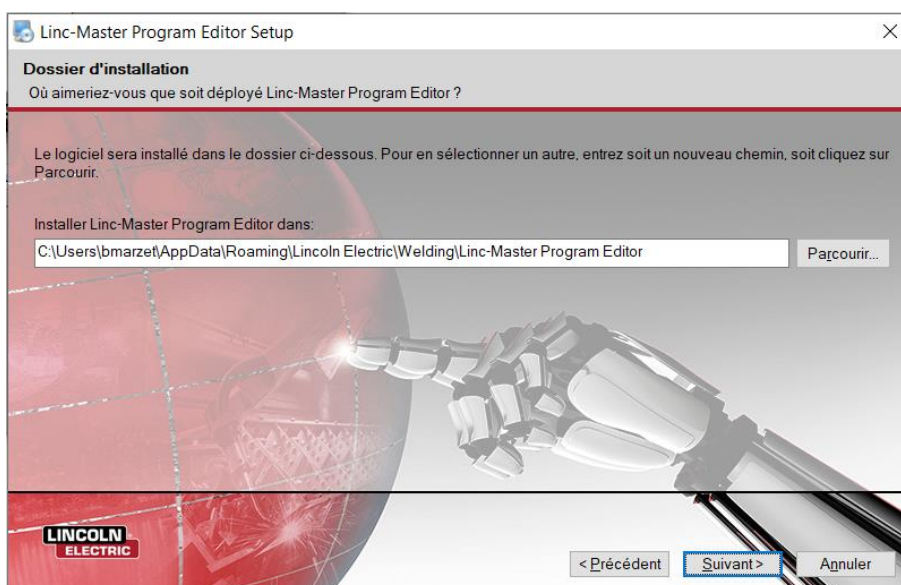
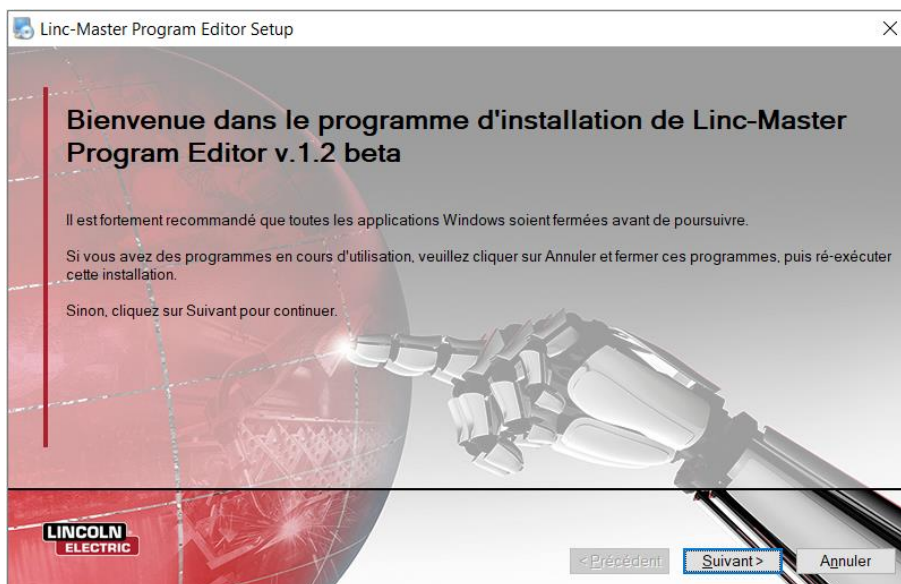
The application can manage a certain number of additional pieces of information (name, material, thickness, MDO settings, hot wire, movement) in the Installation program structure. Such information makes the program export to Excel more meaningful. These last data are only provided for information and are not managed directly and numerically by the installation.

B - INSTALLING THE SOFTWARE

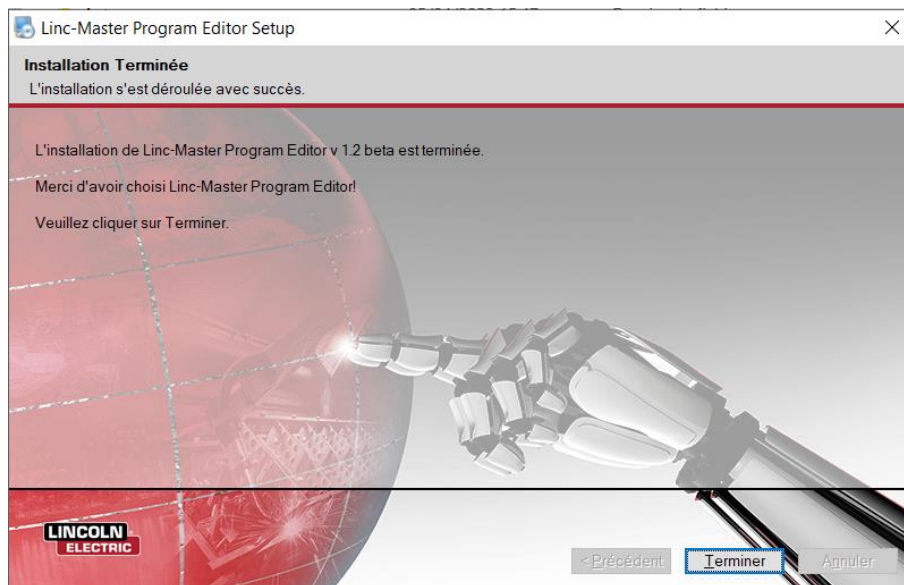
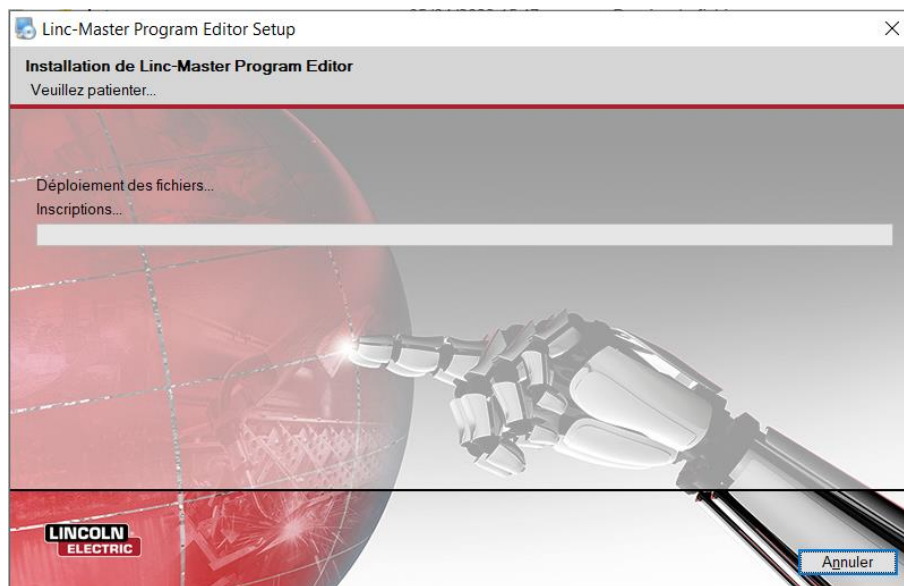
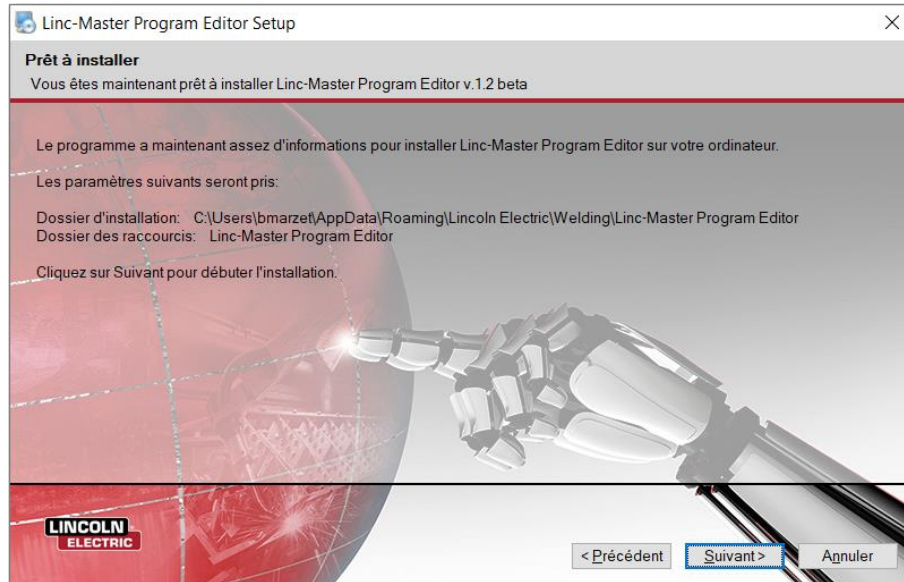
Start the **Linc-Master Program Editor Setup** program and follow the stages.



NB: The software is compatible with Windows Seven (with the installation of .Net framework 4.6); Windows 10. Export requires an Excel 2007 version as a minimum.



The installation folder is in “C:\Program Files\...” by default (installation for all users). If the user does not have the required administrator rights, then the installation folder will automatically change to one that is specific to the current user.



C - STARTING SCREEN

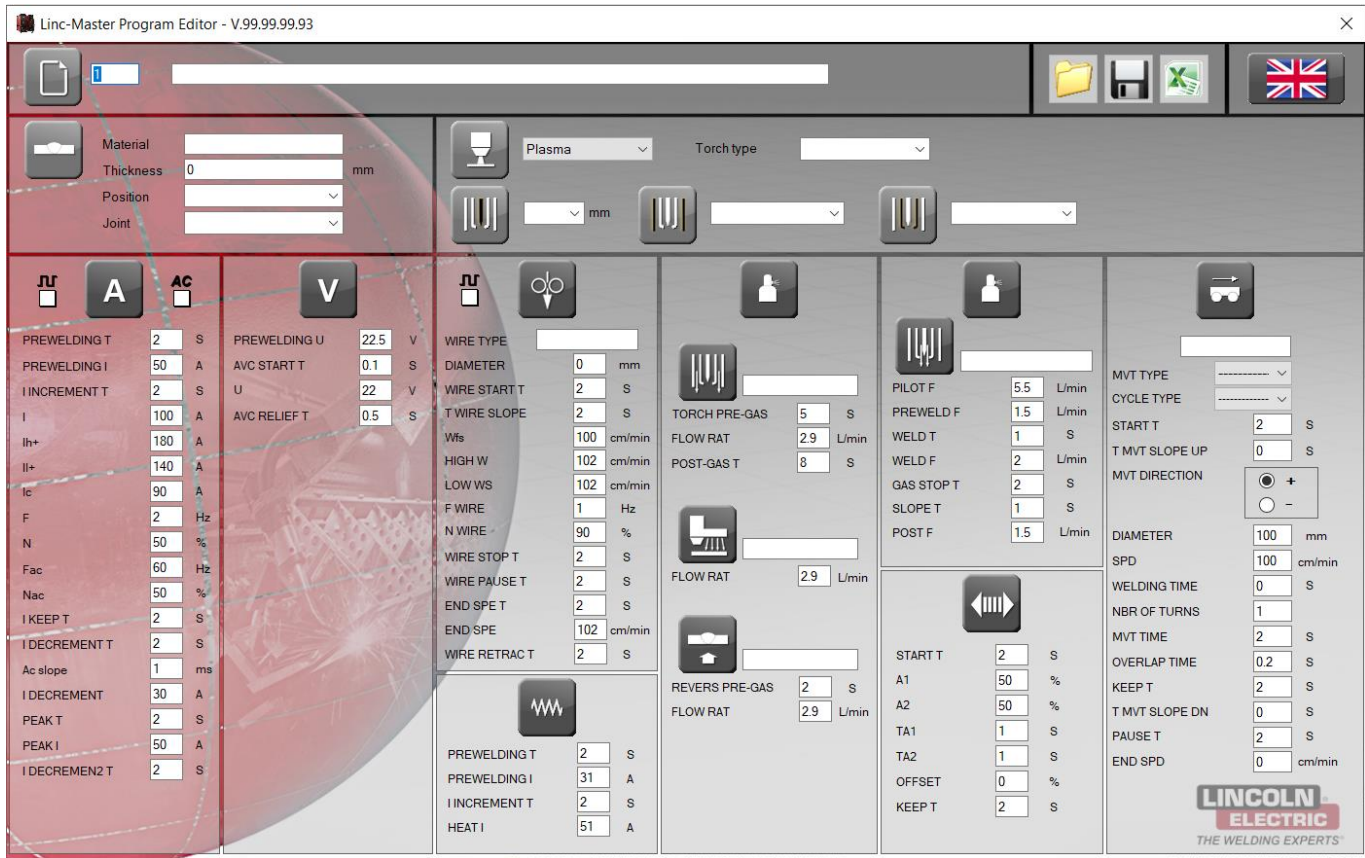
Start the program installed earlier that is located here:

Start





→ All programs

→ Linc-Master Program Editor

→ Linc-Master Program Editor



MAIN FEATURES

	Open program
	Save current program
	Export current program to Excel file
	Change application language

D - EDITING A PROGRAM

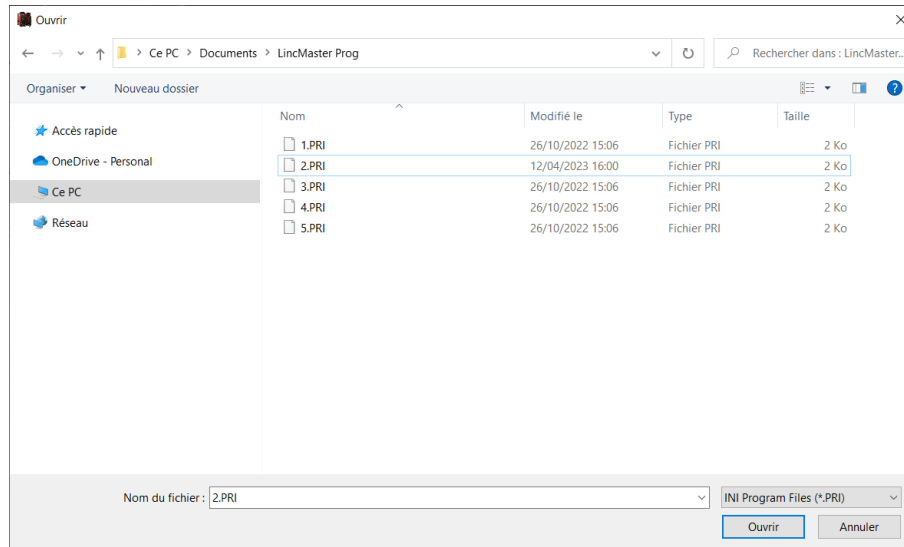


1 - SELECTING THE PROGRAM

You must first retrieve the programs from your installation via a USB drive.



Click the button  to open the standard Windows file selection window.







Select the program file from your installation and click Open to display the program settings.







2 - DEFINING EDITING ZONES









GENERAL INFORMATION

1	The program number is initialised from the name of the file. Give the program a name.
2	Enter the material and grade, and its thickness. Enter the weld position and the type of seam.
3	<p>Enter the type of process :</p> <ul style="list-style-type: none"> - Plasma - Plasma* - TIG - BP TIG - DF TIG <p>Enter the characteristics of the welding torch:</p> <ul style="list-style-type: none"> - Type of torch <ul style="list-style-type: none"> • SP7 • MEC4 - Electrode diameter  - Type of tip  - Type of nozzle 

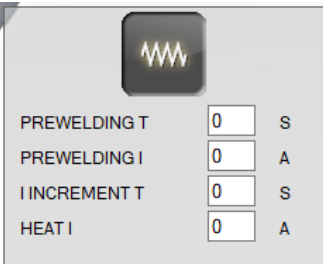

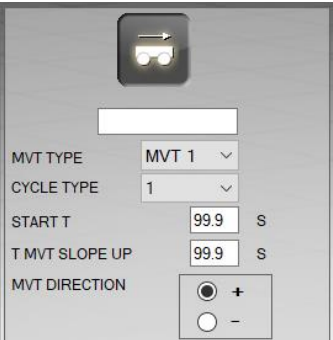
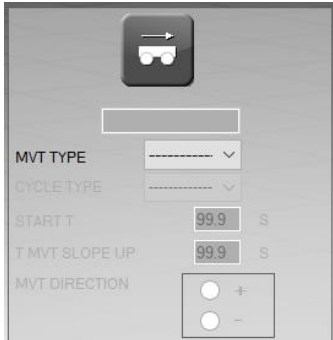
BASIC FUNCTIONS

	<p>Power source current settings. <u>Options:</u></p> <p> <input type="checkbox"/> Check this box to programme pulsed welding current.</p> <p>AC <input type="checkbox"/> Check this box to programme alternating welding current.</p>
	Annular gas settings
	Gas setting, PLASMA or TIG double flux

3 - OPTIONAL FUNCTIONS

	Arc voltage regulation settings
	Wire feed settings. Options:  <input type="checkbox"/> Check this box to define the pulsed wire.
	Hot wire settings
	Auxiliary gas settings
	Backing gas settings
	MDO (Magnetic Deviation Oscillation) settings
	Movement settings

Click the picture at the top of the area to select/deselect a function.

Function selected	Function deselected
<p>Button on: Active edit fields</p> 	<p>Button off: all the fields are greyed</p> 
Particular case: definition of a movement	
<p>Select MVT 1 or MVT 2 from the list</p> 	<p>Select ----- from the list</p> 

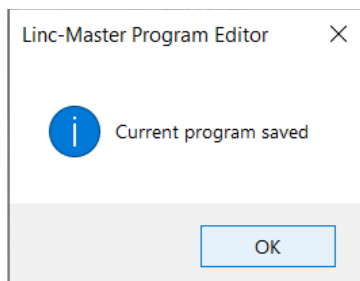
E - SAVING A PROGRAM



1 - SAVE CURRENT PROGRAM



Click the button  to save the program being edited. The message below is displayed if saving succeeds.



2 - SAVE AS

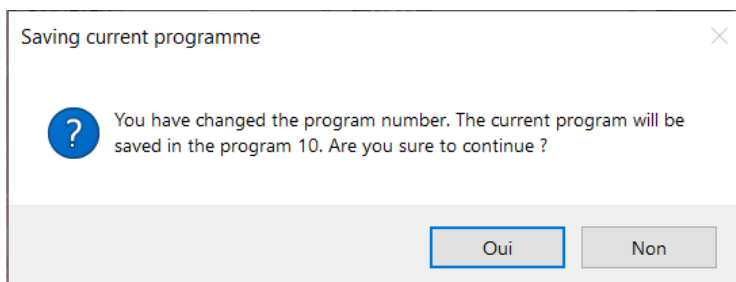
To save the current program under another program name, just modify the program number (1 to 99)



and then click the button




The application will detect the change in number and display the following message.



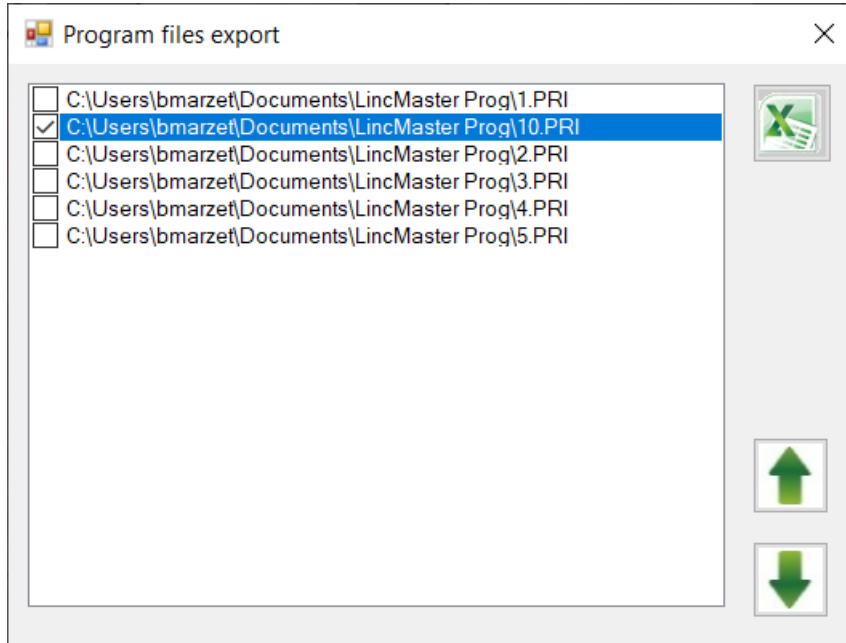
When you click **Yes**, the program will be saved under another number (see previous paragraph) and become the current program.




F - EXPORTING A PROGRAM



Click the button  to export 1 to 5 programs in an Excel file.

A program selection screen will display all the program files present in the directory of the current program, which is itself selected by default.




	<p>Program selection check boxes</p>
	<p>Click the arrows to modify the order of display of the programs in the Excel file.</p>
	<p>Click this button to export the selected programs to an Excel file (extension XLSX). The standard Windows Save as window will be opened. Select a directory and a name for the file and click Save. The file is then exported and the message "Export completed" is displayed if export is successful</p>

1 - EXPORT FILE FORMAT

WELDING PROGRAM EDITION		LINCOLN ELECTRIC			
LINC-MASTER	Customer :				
	Project :				
	Date :				
	Rev. :				
	Page(s) :	1 / 1			
Piece	Material				
	Thickness	0.0			
	Position				
	Joint				
Consumables	Wire Type				
	Wire Ø (mm)	0.0			
	Plasma Gas				
	Annular Gas				
	Trailer Gas				
	Backing Gas				
Process	TIG				
Torch	Torch Type				
	Electrode Ø (mm)				
	Shielding Nozzle				
	Plasma Nozzle				
Program parameters	Program number	10			
	Program Name				
Current	Pulsed DC				
	PREWELDING T (s)	5.0			
	PREWELDING I (A)	50			
	I INCREMENT T (s)	2.0			
	I (A)				
	I (A)	80			
	I (A)	50			
	Ic (A)				
	F (Hz)	2.0			
	N (%)	30			
	Fac (Hz)				
	Nac (%)				
	I KEEP T (s)	0.1			
	I DECREMENT T (s)	2.0			
	Ac slope (ms)				
	I DECREMENT (A)				
	PEAK T (s)				
	PEAK I (A)				
	I DECREMEN2 T (s)				
Voltage	PREWELDING U (V)				
	AVC START T (s)				
	U (V)				
	AVC RELIEF T (s)				
Wire	-				
	WIRE START T (s)	0.1			
	T WIRE SLOPE (s)	0.1			
	Wfs (cm/min)	80			
	HIGH W (cm/min)				
	LOW WS (cm/min)				
	F WIRE (Hz)				
	N WIRE (%)				
	WIRE STOP T (s)	0.1			
	WIRE PAUSE T (s)				
	END SPE T (s)				
	END SPE (cm/min)				
	WIRE RETRAC T (s)	0.1			
Hot Wire	PREWELDING T (s)	0.0			
	PREWELDING I (A)	0			
	I INCREMENT T (s)	0.0			
	HEAT I (A)	0			
Annular Gas	TORCH PRE-GAS (s)	2.0			
	FLOW RAT (l/min)	0.0			
	POST-GAS T (s)	5.0			
Trailer Gas	FLOW RAT (l/min)				
Backing Gas	REVERS PRE-GAS (s)				
	FLOW RAT (l/min)				
Plasma Gas	PILOT F (l/min)				
	PREWELD F (l/min)				
	WELD T (s)				
	WELD F (l/min)				
	GAS STOP T (s)				
	SLOPE T (s)				
	POST F (l/min)				
Magnetic Deviation	START T (s)				
	L AMPLI (%)				
	R AMPLI (%)				
	L PAUSE T (s)				
	R PAUSE T (s)				
	OFFSET (%)				
	KEEP T (s)				
Principal Movement	MVT TYPE	MVT 1			
	CYCLE TYPE	1			
	MVT START T (s)	99.9			
	T MVT SLOPE UP (s)	99.9			
	MVT DIRECTION	+			
	DIAMETER (mm)				
	SPD (cm/min)	1000			
	WELDING TIME (s)				
	NBR OF TURNS				
	MVT TIME (s)				
	OVERLAP TIME (s)				
	MVT STOP T (s)	0.1			
	T MVT SLOPE DN (s)	0.0			
	MVT RESTART T (s)	2.0			
	END SPD (cm/min)	1000			

G - CHANGING THE LANGUAGE



Left click  to change the current language of the software to the next language in the list. Right click to go back to the previous language. The flag of the current language is then displayed inside the button.

French	English	German	Neerlandais	Italian	Spanish	Portuguese	Polish
							

