

LINCOLN[®]
ELECTRIC



SHIPBUILDING SOLUTIONS



EMH 100

OUR STORY

For over 125 years, Lincoln Electric has been at the forefront of arc welding, automation, and innovation. Our advanced solutions are paired with unwavering support across the globe. In shipbuilding, our extensive expertise in welding, cutting, and automation ensures adherence to stringent codes and aims to maximize your return on investment. Our customized solutions are designed to deliver unmatched efficiency, reliability, and value. Rely on Lincoln Electric for superior shipbuilding solutions, built on a legacy of excellence.

HD PLASMA CUTTING

FineLine® HD Plasma Cutting System

High definition plasma cutting system

Cut Quality: Provides exceptional cut quality on mild steel, stainless steel, and aluminum

Technology: Features Magnum® PRO plasma torch and optimized consumables

Cost Efficiency: Reduces operating costs through optimal gas flow and consistent cuts

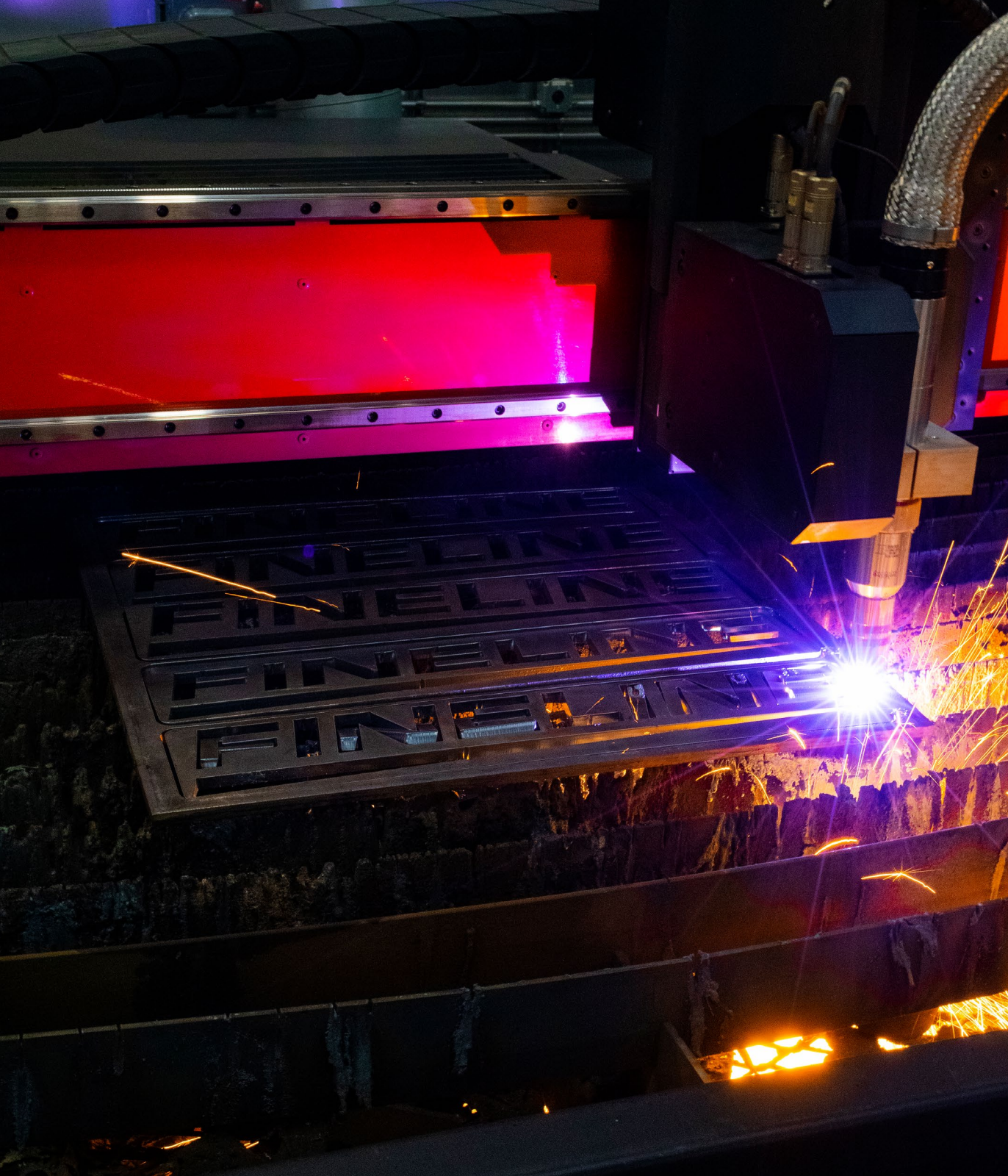
User Interface: Single interface offers a user-friendly control

Performance Optimization: Allows rapid adjustments of plasma current and gas pressures

Control Features: Control output current, gas choice, pressure, and cut speeds based on material selections



[LEARN MORE](#)



**The FineLine® HD Plasma
Cutting System delivers
excellent cut quality on flat
plate, structural beam, or pipe.**

INDUSTRIAL PLATE CUTTING

Torchmate® 5100 Series

The Torchmate 5100 is our flagship industrial CNC plasma table

Design: Built to handle continuous production runs

Performance: Impressive repeatability and reliability

Compatibility: Fully compatible with high-definition plasma cutters

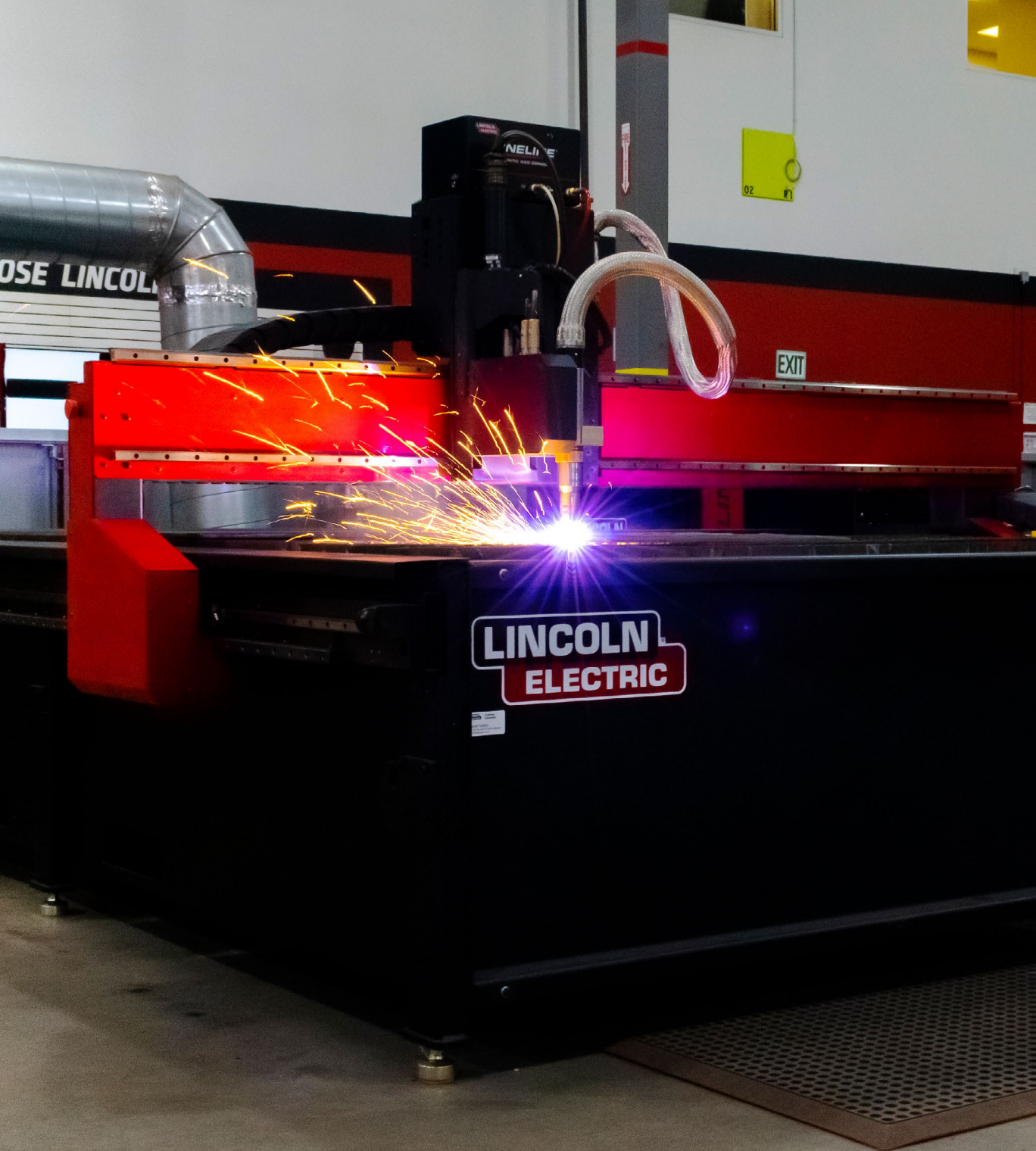
Configurations: Offers two different table configurations

Power Options: Four different plasma power supply options available

Maintenance: Operates with minimal maintenance required



[LEARN MORE](#)



**Industrial CNC plasma table
built for all-day production.**

INDUSTRIAL PIPE PROCESSING

Vernon Tool® MPM®

Heavy-duty, field-proven industrial pipe profiling solution

Durability: Recognized to have a lifespan of over 50 years in the industry

Pipe Capacity: Capable of handling up to 48 inch (1219 mm) diameter pipes

Cutting Capabilities: Offers 5-axis profiling for versatile cutting

Easy Programming: Simple and straightforward cut programming with included software

Customizable: Expandable machine beds and conveyor lengths to fit business demands

Leading Machine: Recognized as the top machine in its class



[LEARN MORE](#)



“Cutting pipe is a night and day difference with the Vernon Tool MPM. Cutting pipe used to be slow and now we cut nearly 10 times faster with the MPM. The machine paid for itself within the first year.”

- WD Manor, USA

PIPE CUTTING

MasterPipe® Compact Profiler

The MasterPipe Compact profiler offers cost-effective CNC pipe cutting

Compact Design: Small footprint, great for environments with limited space

Pipe Handling: Suitable for outside diameters of 2-8" (50.8mm-203.2mm)

Applications: Ideal for handrail and fencing manufacturers, roll cage and small-medium-sized fabrication shops

Advanced Technology: Utilizes ACCUMOVE® motion control technology

User-Friendly Interface: Equipped with Visual Machine Designer Software for intuitive operation

Versatile Cutting: Profiles aluminum, stainless steel, and mild steel pipes efficiently

Optimized Efficiency: Includes software package for material usage optimization



[LEARN MORE](#)



Accurate pipe cutting in a small footprint. MasterPipe® Compact Profiler is a superb solution for small pipe and tube cutting.



7

8

8

WELD FUME SOLUTIONS

Making Fume Management Easy



shown: Prism® Circulator® 4000

Lincoln Electric manufactures portable, stationary, and customized weld fume control solutions

System Design: Environmental specialists offer custom designs for optimal circulation and air filtration

Installation and Service: Experienced team installs arms, hoods, filter banks, and duct work on-site

[LEARN MORE](#)

WELDING COBOT

Game-Changing Collaboration



shown: Cooper Cobot CRX-10iAL

Combine welding expertise and automation with the Cooper Welding Cobot series

Productivity Improvements: Deploy welding programs in minutes

Advance Capabilities : touch sensing and multi-pass welding

Safe Collaboration: operate without perimeter fencing

Easy: drag-and-drop programming and tech-at-the-torch technology

[LEARN MORE](#)



Small, lightweight, and intuitive to use, the Cooper™ Cobot works alongside humans to open up new opportunities for optimizing welding processes and increasing efficiency.

FAB SHOP WELDING

Power Wave® Advanced Process Systems



Industry-proven equipment industry-leading technology

Advanced Weld Technology: Waveform Control Technology delivers top-tier arc performance for shipbuilding needs

Exclusive Software Tools: Standard features include Checkpoint® Production Monitoring and Power Wave® Manager for full control

Dependable Performance: Robust build with a standard five-year warranty

Rack Systems Available: Simplify connections with a portable industrial-grade system ideal for grouping multiple power sources

[LEARN MORE](#)



3350 SERIES

LINCOLN ELECTRIC

UltimArc

-5.6

Soft Stiff

Turn & push to select

GMAW RapidArc Steel .045 90% Ar 10% CO2

2

WARNING

LINCOLN ELECTRIC

WAVE

SHIPYARD WELDING

Durable Multi-Purpose Equipment

Versatile welders for shipbuilding environments

Flextec® Multi-Process Welders: Using a compatible feeder, these rugged welders provide pulse MIG capability while offering weld modes for carbon steel, stainless steel, aluminum, and metalcore electrodes. Easy to setup and versatile across various welding applications

Activ8X® Wire Feeders: TVT™ and CrossLinc® allow you to control this machine from hundreds of feet away without the need for a control cable, while it compensates for any voltage drop

Power Feed® 25M Wire Feeder: Push-pull capable for premium aluminum welding and features advanced process control with the MAXTRAC® drive system

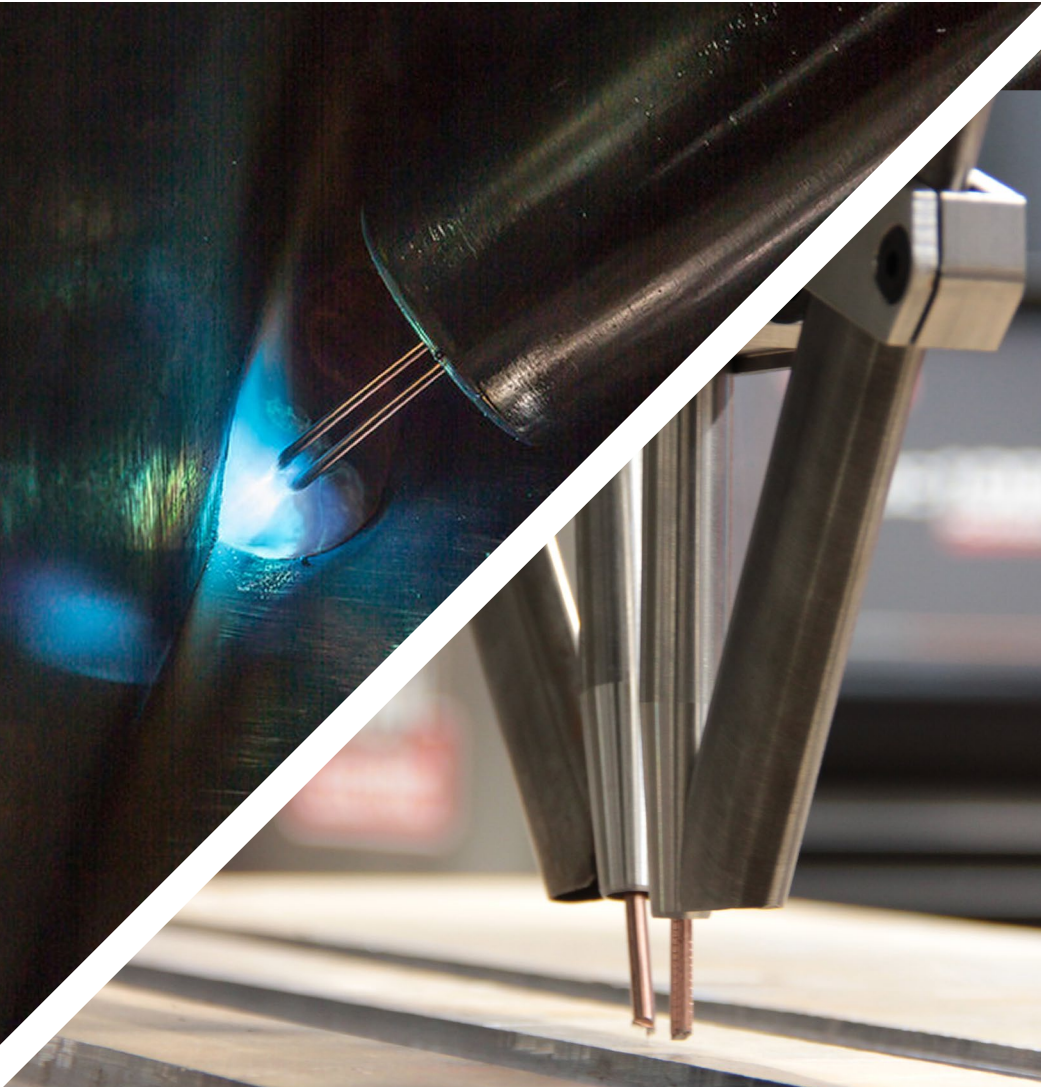
Rack Systems Available: More portability, smaller footprint, and single primary input connection for multiple welders



[LEARN MORE](#)

ADVANCED WELD PROCESSES

Industry-Leading Innovation



HyperFill®: The use of higher deposition welds is made faster and easier with our Twin-wire solution, alongside the Power Wave® AC/DC 1000® SD Inverter technology. This innovative combination significantly boosts productivity in shipbuilding by employing twin electrodes and a single power source, feeder, and contact tip, ensuring maximum efficiency throughout the welding process.

[LEARN MORE](#)

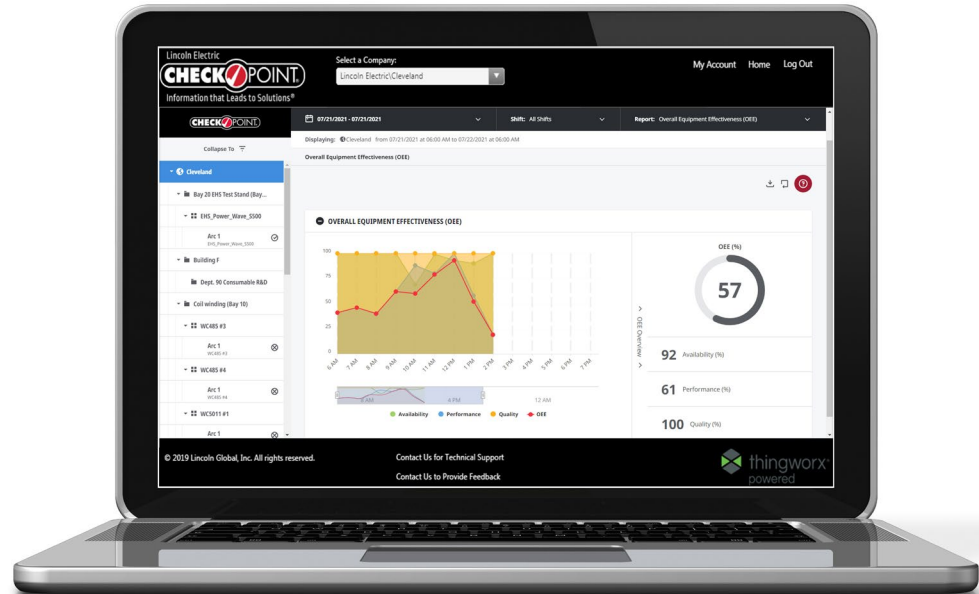
Long Stick Out (LSO): LSO technology offers unparalleled deposition rates, allowing for increased output through faster travel speed and precise penetration control. It ensures excellent bead appearance, thereby enhancing overall productivity and efficiency in your welding processes.

[LEARN MORE](#)

COLLECT DATA. CREATE ACTION.

CheckPoint® Weld Data Monitoring

- Real-time production monitoring data
- Powerful dashboards for full operation visibility
- Easily export and share
- Secure, cloud-based solution (no hardware, no installation)



LEARN MORE



INDUSTRY LEADING CONSUMABLES

Wide Range of Premiere Welding Expendables



Developed for precise applications and
the highest quality standards

SuperGlaze® Aluminum MIG Wire: Reliable performance with stable arcs and minimal issues; fully integrated production for consistent quality

UltraCore® Flux Cored Electrodes: Premium arc performance with easy slag removal, copper-coated for better feedability and moisture resistance

Lincolnweld® and Oerlikon Submerged Arc Consumables: High-quality fluxes and electrodes offering excellent weldability, low hydrogen potential, and consistent results

[LEARN MORE](#)



**“We know that when we build
an aluminum hull using
Lincoln Electric products,
that’s it’s going to last.”**

- Michael Allen,
General Manager, MetalCraft Marine

HIGH-END WELDING GUNS

Robust Guns with Premium Performance



[LEARN MORE](#)

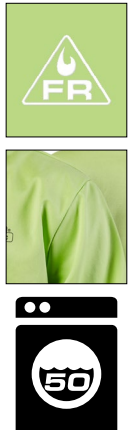
SHIPYARD PPE

Optimized Protection

Bright FR Orange Welding Jacket w/ Leather Sleeves



Bright FR Cloth Welding Jacket - Safety Lime



High Visibility FR Orange Welding Jacket w/ Reflective Stripes



Bright FR Cloth Welding Jacket - Safety Orange



[LEARN MORE](#)

RESPIRATORY PROTECTION

Simple and Smart Respiratory System

ANSI Certified
CSA Certified
NIOSH® Certified



VIKING™ 3250D FGS® PAPR with Integrated Hard Hat

When choosing a PAPR for a fabrication environment, its blower design, field of view & optic quality are 3 important variables to consider. The VIKING 3250D FGS Powered Air Purifying Respirator features a smart blower system, integrated grind shield & hard hat and a extra large 12.5 sq. inch auto-darkening lens with our exclusive 4C® Lens technology.

What's included

- Hose with Cover
- Padded Belt (29-52 in.)
- Headcovering
- Shoulder Straps
- Duffle Pack

[LEARN MORE](#)

RESOURCE CENTERS



APPLICATION RESOURCE CENTER

Application Resource Centers, or ARC facilities, feature Lincoln Electric's newest technologies and experts who develop and deliver productivity solutions. These centers provide dedicated spaces and equipment for demonstrating and testing welding, cutting, virtual welding, and automation solutions. Each ARC also includes classrooms for training on available processes, machines, and products to develop and conquer any shipbuilding needs, alongside dedicated application experts who assist customers with welding problems, procedures, and more.

[LEARN MORE](#)



Customer Assistance Policy

The business of Lincoln Electric is manufacturing and selling high quality welding equipment, automated welding systems, consumables, and cutting equipment. Our challenge is to meet the needs of our customers, who are experts in their fields, and to exceed their expectations. On occasion, purchasers may ask Lincoln Electric for information or technical information about their use of our products. Our employees respond to inquiries to the best of their ability based on information and specifications provided to them by the customers and the knowledge they may have concerning the application. Our employees, however, are not in a position to verify the information provided or to evaluate the engineering requirements for the particular weldment, or to provide engineering advice in relation to a specific situation. Accordingly, Lincoln Electric does not warrant or guarantee or assume any liability with respect to such information or communications. Moreover, the provision of such information or technical information does not create, expand, or alter any warranty on our products. Any express or implied warranty that might arise from the information or technical information, including any implied warranty of merchantability or any warranty of fitness for any customers' particular purpose or any other equivalent or similar warranty is specifically disclaimed.

Lincoln Electric is a responsive manufacturer, but the definition of specifications, and the selection and use of specific products sold by Lincoln Electric is solely within the control of, and remains the sole responsibility of the customer. Many variables beyond the control of Lincoln Electric affect the results obtained in applying these types of fabrication methods and service requirements.

Subject to Change – This information is accurate to the best of our knowledge at the time of printing. Please refer to www.lincolnelectric.com for any updated information.