

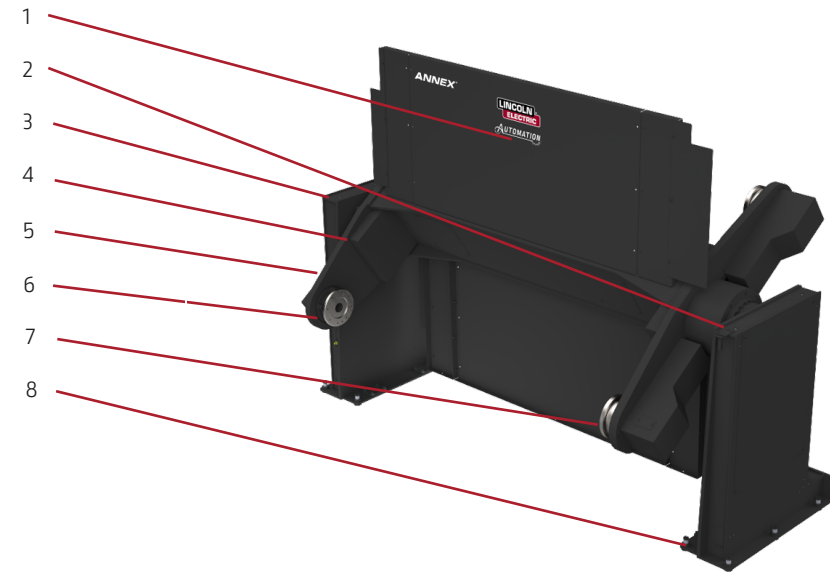
Automation From The Welding Experts®

Lincoln Electric has more than a century of welding expertise, and along with our subsidiaries, we have integrated thousands of robotic welding systems. Our robotic welding systems are the culmination of know-how gained from these integrations and the distillation of the most commonly requested features of our custom-built systems. Now you can tap into that wealth of experience with our ANNEX robotic positioners. These building blocks of robot systems are available in standard and custom configurations to help position your part or robot to the proper location integrated into your system.

ENGINEERED FOR GENERAL & AUTOMOTIVE INDUSTRIES

ANNEX Ferris Wheel Positioner Standard Features »

1. OPERATOR PROTECTION
2. MASTERING (ZERO) BLOCK MAJOR AXIS
3. REMOVABLE PANELS FOR MAINTENANCE/ACCESS
4. OPTIONAL SHOT PIN (MAJOR AXIS)
5. ROTARY GROUND (MINOR AXIS)
6. SINGLE PILLOW BLOCK BEARING & THROUGH BORE SPINDLE (DUAL BEARING OPTIONAL)
7. PRECISION GEARBOXES
8. LEVELING/ANCHOR BOLTS



MAKE YOUR OWN CUSTOM POSITIONER

At Lincoln Electric Automation, we design and build the ANNEX positioners. If our standard models aren't quite what you need, we have the ability to modify or create a custom positioner!

- CUSTOM WEIGHT CAPACITY
- CUSTOM SPAN OR SWING DIAMETER
- UNIQUE OPTIONS / ACCESSORIES AS STANDARD
- CUSTOM SIZING TO A FOOTPRINT

CUSTOM OPTIONS AVAILABLE

- ROTARY GROUNDS FOR WELDING
- DUAL DRIVE HEADSTOCK / TAILSTOCK
- TOUCHSCREEN HMI FOR MANUAL USE
- PAINT COLOR
- FANUC®, ABB®, YASKAWA®, KAWASAKI®, OR KUKA® ROBOT COMPATIBLE



Manufactured in Bettendorf, Iowa



CUSTOMER ASSISTANCE POLICY

The business of The Lincoln Electric Company® is manufacturing and selling high quality welding equipment, consumables, and cutting equipment. Our challenge is to meet the needs of our customers and to exceed their expectations. On occasion, purchasers may ask Lincoln Electric for information or advice about their use of our products. Our employees respond to inquiries to the best of their ability based on information provided to them by the customers and the knowledge they may have concerning the application. Our employees, however, are not in a position to verify the information provided or to evaluate the engineering requirements for the particular weldment. Accordingly, Lincoln Electric does not warrant or guarantee or assume any liability with respect to such information or advice. Moreover, the provision of such information or advice does not create, expand, or alter any warranty on our products. Any express or implied warranty that might arise from the information or advice, including any implied warranty of merchantability or any warranty of fitness for any customers' particular purpose is specifically disclaimed.

Lincoln Electric is a responsive manufacturer, but the selection and use of specific products sold by Lincoln Electric is solely within the control of, and remains the sole responsibility of the customer. Many variables beyond the control of Lincoln Electric affect the results obtained in applying these types of fabrication methods and service requirements.

Subject to Change – This information is accurate to the best of our knowledge at the time of printing. Please refer to www.lincolnelectric.com for any updated information.

LEA-02224KC1-01

© Lincoln Global, Inc. All Rights Reserved.

All trademarks and registered trademarks are the property of their respective owners.

www.lincolnelectric.com/automation

Lincoln Electric Automation
3129 State St.
Bettendorf, IA 52722 U.S.A.
1.563.355.4182



SELECTION GUIDE ANNEX™ ROBOTIC POSITIONERS



Selection Guide

ANNEX™
Part Positioners

ANNEX™
Robot Positioners

Skyhook

Maximum Payload:
1000 / 1500 / 3000 / 5000 (kg)
Platter Height:
700 / 850 / 1000 / 1066 (mm)



Drop Center

Maximum Payload:
10,000 / 20,000 (kg)



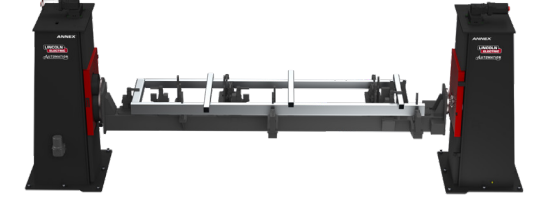
Compact Ferris Wheel

Maximum Payload:
1500 (kg)
Tool Bed Length:
2.00 / 2.50 / 3.00 (m)



Z-Axis HSTS

Maximum Payload:
2500 / 5000 / 10,000 / 15,000 (kg)
Maximum Swing Diameter:
3250 / 3350 / 3650 (mm)



TT2T

Maximum Payload Per Axis:
500 / 1000 / 1818 (kg)
Tool Bed Length:
1.50 / 2.00 / 2.50 / 3.00 (m)



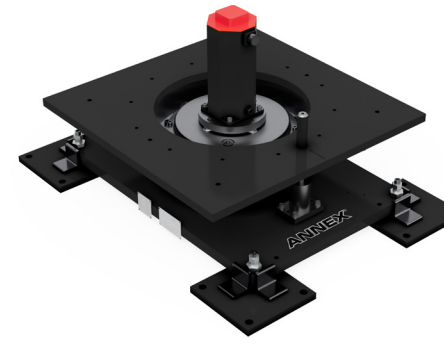
HSTS

Max Payload:
1000 / 1100 / 1900 / 2500 / 5000 / 5500 / 6700 (kg)



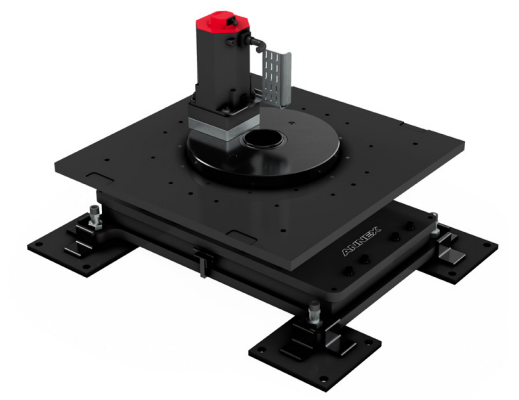
Inline Turntable

Maximum Payload:
1800 / 1360 / 2600 / 4600 / 6000 / 4000 / 6350 (kg)
Turntable Diameter:
2.54 / 3.81 / 4.80 (m)



Open Center Turntable

Maximum Payload:
2600 / 6000 / 6350 (kg)
Max Height:
405 / 295 (mm)



Arc Welding RTU

Available Lengths:
2 - 30 (m)

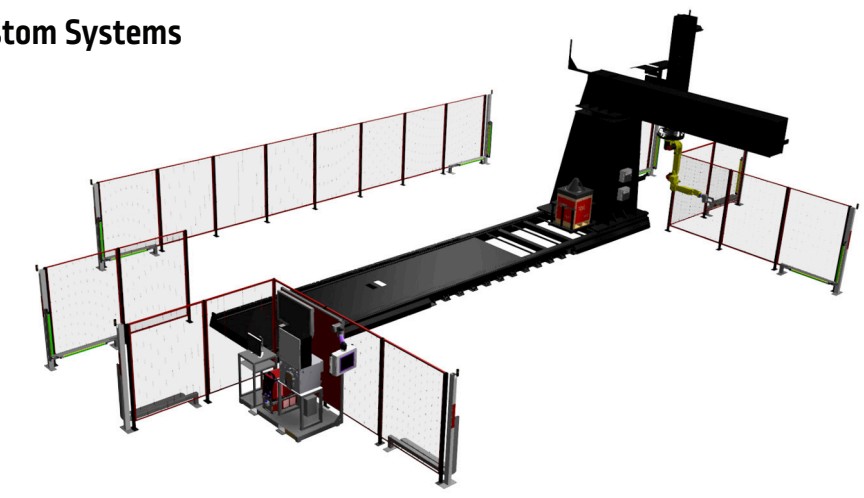


Material Handling RTU

Available Lengths:
2 - 20 (m)



Custom Systems



For More Information Visit:
lincolnelectric.com/ANNEX