



# 10LCD Plus™

## BURNY® SHAPE CUTTING CONTROLLER

The 10LCD Plus CNC brings to you the performance of a cutting edge CNC that is built on more than 40 years of experience in the motion control and cutting industries. This CNC is designed for multiple axis cutting machines and features the latest advances in CNC technology on a proven platform engineered to increase productivity, reduce costs and enhance your profitability. Our software provides you with flexibility, ease of use and technologies that put our experience and expertise in your operators' hands, resulting in extremely good cut quality and high productivity.

The 10LCD Plus is an industrial grade PC, designed to operate in factory environments where temperature and humidity extremes, metal dust, RF radiation, vibration, and constant machine movement are commonplace. It is easy to learn, easy to use, and allows multiple control and programming tasks to be completed simultaneously.

With The Burny 8 software, the 10LCD Plus produces extremely precise and repeatable motion control. The results are clear – achieve the highest accuracy and the tightest tolerances – even on the most complicated parts.

The 10LCD Plus can operate any cutting machine and interfaces with virtually all processes including: plasma, oxyfuel and waterjet. The system is backed by our extensive staff of experienced in-house engineers and service technicians.

### HARDWARE PLATFORM:

- **Interface:** 15 in. TFT USB Touch Screen
- **Processor:** 2.26GHz Intel® Core™2 Duo Mobile
- **Memory:** 2 GB DDR3 RAM
- **Operating System:** Windows® 8 OS Embedded (fully supported)
- **Storage Space:** 40GB or Larger (SATA) industrial grade solid-state hard drive for robust performance
- **Connectivity Options:** USB, Wireless (standard)
- **Physical Controls:** 8 Direction Keypad, Start, Stop, Go To, Reverse, and Feed Rate Potentiometer (optional)
- **Enclosure:** High Temperature and Humidity, Metal Dust, RF resistant (plasma), vibration/movement. Contain high voltage/high current outputs for plasma, waterjet, oxyfuel and other processes
- **Physical Dimensions (H x W x D):** 14 x 18.3 x 12 in. (356 x 465 x 305 mm)
- **Weight:** 32 lbs (14.5 kg)
- **Input Power Requirement:** 115/230 VAC at 50/60 Hz
- **Operating Environment:** 32 to 122°F (0 to 50°C) 95% humidity (non-condensing)
- **Partial List of Operating Languages:** Swedish, French, Russian, Spanish, Chinese, Italian, Norwegian, German
- **Warranty:** 1 year on controller
- **CE Compliant**



10LCD Plus with Burny 8 Software  
 BK1250-100200 10LCD Plus, Standard  
 BK1250-100201 10LCD Plus, Open Frame  
 BK1250-100202 10LCD Plus, Front Panel Only

# STANDARD FEATURES



### Improved User Experience

New intuitive graphical user interface features optimized screen to screen navigation; drop down menus, easy access panel for torch height control, Shapes and Job Set up menus.

### Fast DXF Conversion

The 10LCD Plus™ accepts direct downloads of CAD/CAM .dxf files, which eliminates the expenses

of third-party post processing software. Furthermore, the 10LCD Plus can automatically assign Lead In/Lead Out positions- or the operator can make these assignments manually.

### Go To (Job Interrupt)

Interrupt the current cutting routine to cut a new part, move ahead multiple pierce points, recover from cut loss, recover from power loss, change torch consumables, interrupt a long nest or reverse the cutting path-all quickly done at the touch of a button without losing machine position and without scrapping valuable material.

### Quick Plate Alignment

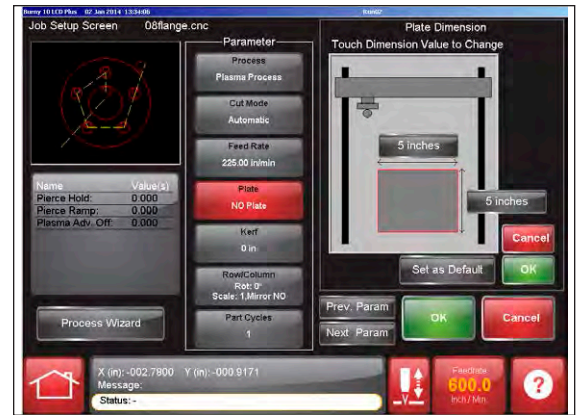
Quickly compensate for a plate that is not aligned properly on the machine. The 10LCD Plus controller rotates the part program for the proper placement on the true plate position. Virtually drops the plate and cuts. This saves material and wasted time moving the plate into the correct cutting position.

### Plasma Process Wizard for Advanced Plasma Process Control

Using the wizard to manage on/off controls of the plasma system saves the operator initial repetitive set up time. Factory loaded cut charts or custom cut charts give you the ability to cut like an expert by simplifying the job setup to only a few steps of choosing your material type and material thickness on the CNC. Once selected, send your cut chart data to the plasma system and begin cutting in minutes. Using the process wizard, easily change the torch height control settings to optimize the cut quality.



Main Screen



Job Set Up



Integrated Spirit® II Console



Diagnostics



Integrated Spirit II Console



Monitor Consumables



Integrated Spirit II Console



Shapes Screen

## OPERATOR PRODUCTIVITY

### Integrated Spirit® II Module

Burny 8 includes an integrated Spirit II plasma console, which bypasses the need for multiple screens and enables the operator to control the plasma cutting process via a single controller and a single user interface.

### True Multitasking Environment

Increases operator productivity by performing many different tasks within the Burny 8 environment. Load a new part program, create or edit a part program, choose a new part program from the shape library, create or edit a program nest, check production messages, fill out productivity sheets or monitor consumables life-all at the same time and all while the machine is cutting.

### Expandable Shape Library

Commonly used standard shapes can be designed right at the control. Touch the screen to input the required dimensions and follow a simple logical prompting process. A dynamic display draws the shape, which reduces guesswork. Now even complex shapes can be made consistently and accurately.

### Consumable Statistics Screen

Monitor and track consumable usage in order to maximize consumable life and torch life. The system will notify the operator when a consumable change is required. In addition, cut quality and part accuracy can be held to the highest levels.

### UltraNest™ (optional)

Take advantage of our newly designed “on-board” true shape embedded nesting program to further reduce individual part cost and improve plate utilization. This nesting module offers the machine operator a Wizard-based interface along with an integrated CAD editor that makes nesting on the controller easier and more efficient than competitive controllers.

### UltraNest Remnant Module (optional)

Reduce remnant inventory by giving your operator the ability to trace remnants via the CNC and nest parts into partially used plates.

### Programmable Laser Offset for Fast part Alignment

### Easy to Configure Mappable I/O

### On-Screen context based operator manual

### Multi-language support

## RELIABLE

- Designed and built for harsh industrial environments
- Quick System Recovery
- Internal air cooling with complete cabinet seal to protect electronics from metal dust
- Job Interrupt and Power Loss Cut Recovery
- Solid State Hard Drive



## OTHER ADVANCED FEATURES

- Networking via Wireless or Fiber
- Remote Diagnostics
- 10-minute Quick System Recovery
- Programmable Laser Offset for Fast Part Alignment
- Load other 3rd party program/application software
- Easy to Configure with Mappable I/O



The 10 LCD Plus control platform comes ready to optimize hole cutting with minimal operator intervention when using our latest UltraSharp™ hole cutting technology. We achieve this capability by offering a completely integrated platform consisting of our CNC/Height Control/Software and Plasma System that offers a reliable and single sourced cutting solution.

Our 40 years of shape cutting experience helps us produce the industry's most consistent hole quality for mild steel and stainless steel at various thicknesses.

*Windows is a registered trademark of Microsoft Corporation in the United States and other countries*

### CUSTOMER ASSISTANCE POLICY

The business of The Lincoln Electric Company® is manufacturing and selling high quality welding equipment, consumables, and cutting equipment. Our challenge is to meet the needs of our customers and to exceed their expectations. On occasion, purchasers may ask Lincoln Electric for information or advice about their use of our products. Our employees respond to inquiries to the best of their ability based on information provided to them by the customers and the knowledge they may have concerning the application. Our employees, however, are not in a position to verify the information provided or to evaluate the engineering requirements for the particular weldment. Accordingly, Lincoln Electric does not warrant or guarantee or assume any liability with respect to such information or advice. Moreover, the provision of such information or advice does not create, expand, or alter any warranty on our products. Any express or implied warranty that might arise from the information or advice, including any implied warranty of merchantability or any warranty of fitness for any customers' particular purpose is specifically disclaimed.

Lincoln Electric is a responsive manufacturer, but the selection and use of specific products sold by Lincoln Electric is solely within the control of, and remains the sole responsibility of the customer. Many variables beyond the control of Lincoln Electric affect the results obtained in applying these types of fabrication methods and service requirements.

Subject to Change – This information is accurate to the best of our knowledge at the time of printing. Please refer to [www.lincolnelectric.com](http://www.lincolnelectric.com) for any updated information.



### UNITED STATES

4130 Carolina Commerce Parkway  
Ladson, SC 29456  
Toll Free: +1.800.321.8072  
International Calls: +1.843.695.4000  
Fax: 843.795.8931  
Email: [LECSSales@lincolnelectric.com](mailto:LECSSales@lincolnelectric.com)

### EUROPE

(Europe, Africa, Middle East, Australia, New Zealand)  
Lincoln Electric Deutschland  
ZNL der Lincoln Smitweld B.V., Nijmegen  
Werkstrasse 5  
64732 Bad Koenig, Germany  
P: +49-6063-57721-0  
F: +49-6063-57721-35

### ASIA PACIFIC

Phone: +65 98189670  
Fax: +65 65661173

### INDIA

(India, Sri Lanka, Bangladesh, Nepal, Bhutan & Maldives)  
Lincoln Electric Company (India) Private Limited  
Plot No P40, Central Avenue,  
Domestic Tariff Area,  
Mahindra World City, Mahindra World City  
Post Office  
Chengalpattu, Kancheepuram District  
Tamil Nadu 603 002, India  
Tel: +91 44 47 424 999  
Fax: +91 44 47 424 888

[www.lincolnelectric.com](http://www.lincolnelectric.com)

*Designed and manufactured in the U.S.A. To experience the ease of use and advanced features available in our software, contact our local sales representative for a demo version.*