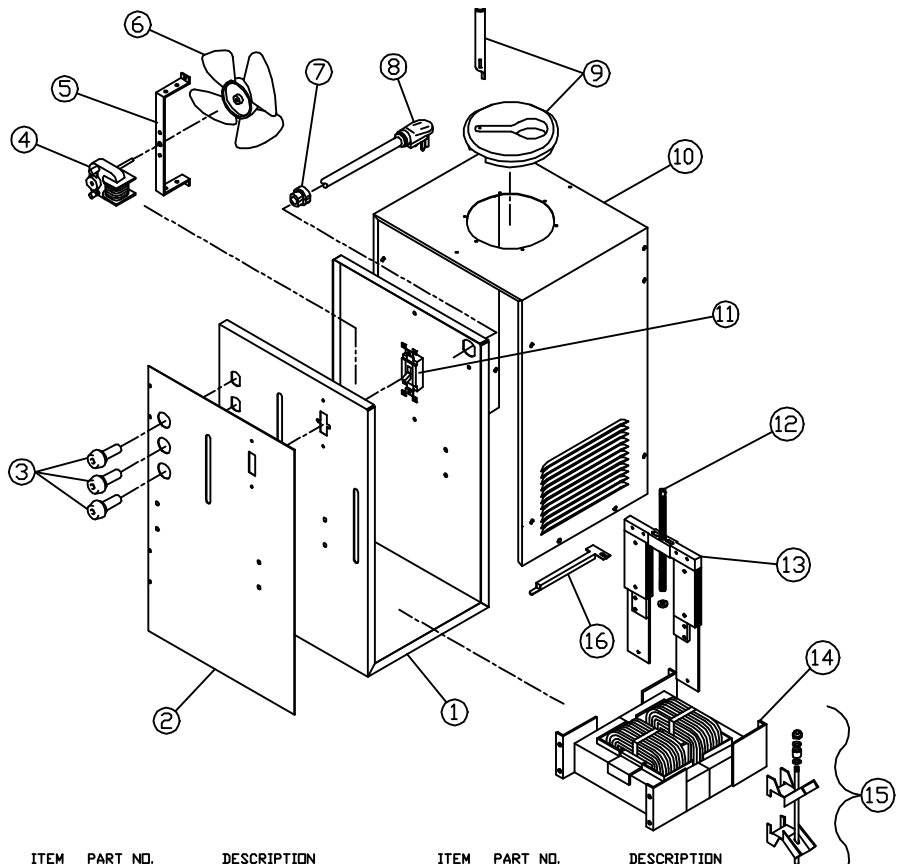


REPLACEMENT PARTS LIST

230 AMP AC ARC WELDER

MODEL **110-121**



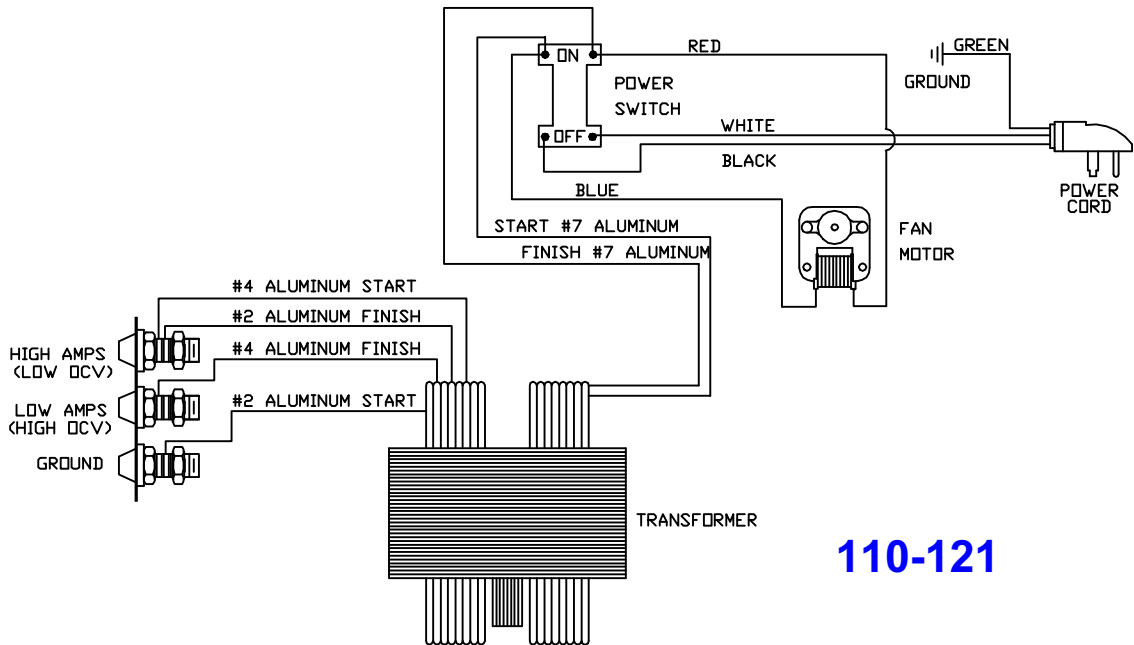
ITEM	PART NO.	DESCRIPTION
1	410-182-730	BASE
2	711-176-XXX	DIAL PLATE
3	312-028-100	JACK RECEPTACLE
4	216-086-666	FAN MOTOR
5	411-072-666	FAN MOTOR MTG BRACKET
6	316-007-666	FAN BLADE
7	541-019-000	STRAIN RELIEF
8	248-301-666	POWER CORD
9	312-221-666	CRANK PLATE
10	410-793-010	BLACK COVER
	410-793-020	RED COVER

ITEM	PART NO.	DESCRIPTION
11	246-371-666	SWITCH
12	310-179-666	LEAD SCREW ASSY
13	880-372-666	SHUNT ASSY
14	860-365-888	TRANSFORMER ASSEMBLY
15	312-236-666	SHUNT GUIDE ASSY (2)
16	412-562-000	INDICATOR
17	4018	GROUND CABLE W/CLAMP (NOT SHOWN)
18	239-207-000	GROUND CLAMP ONLY (NOT SHOWN)
19	4019	ELECTRODE CABLE W/HOLDER (NOT SHOWN)

XXX - MUST SPECIFY BRAND

FORM NO. 812-627-000

SERVICING SHOULD BE PERFORMED BY QUALIFIED SERVICE PERSONNEL.



110-121