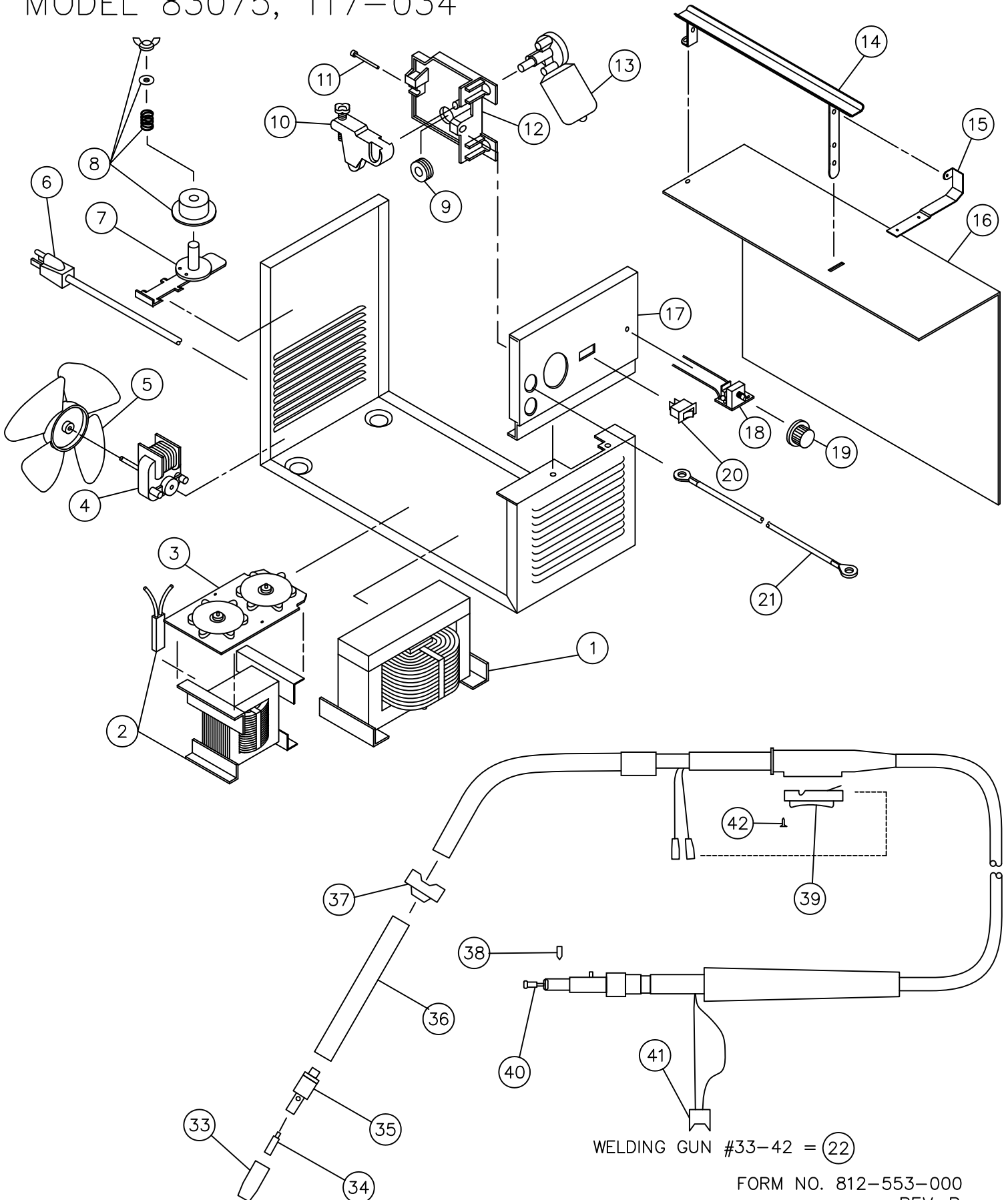


REPLACEMENT PARTS LIST
 CENTURY QUICK-FIX WIRE FEED WELDER
 MODEL 83075, 117-034

117-034, 83075



WELDING GUN #33-42 = (22)

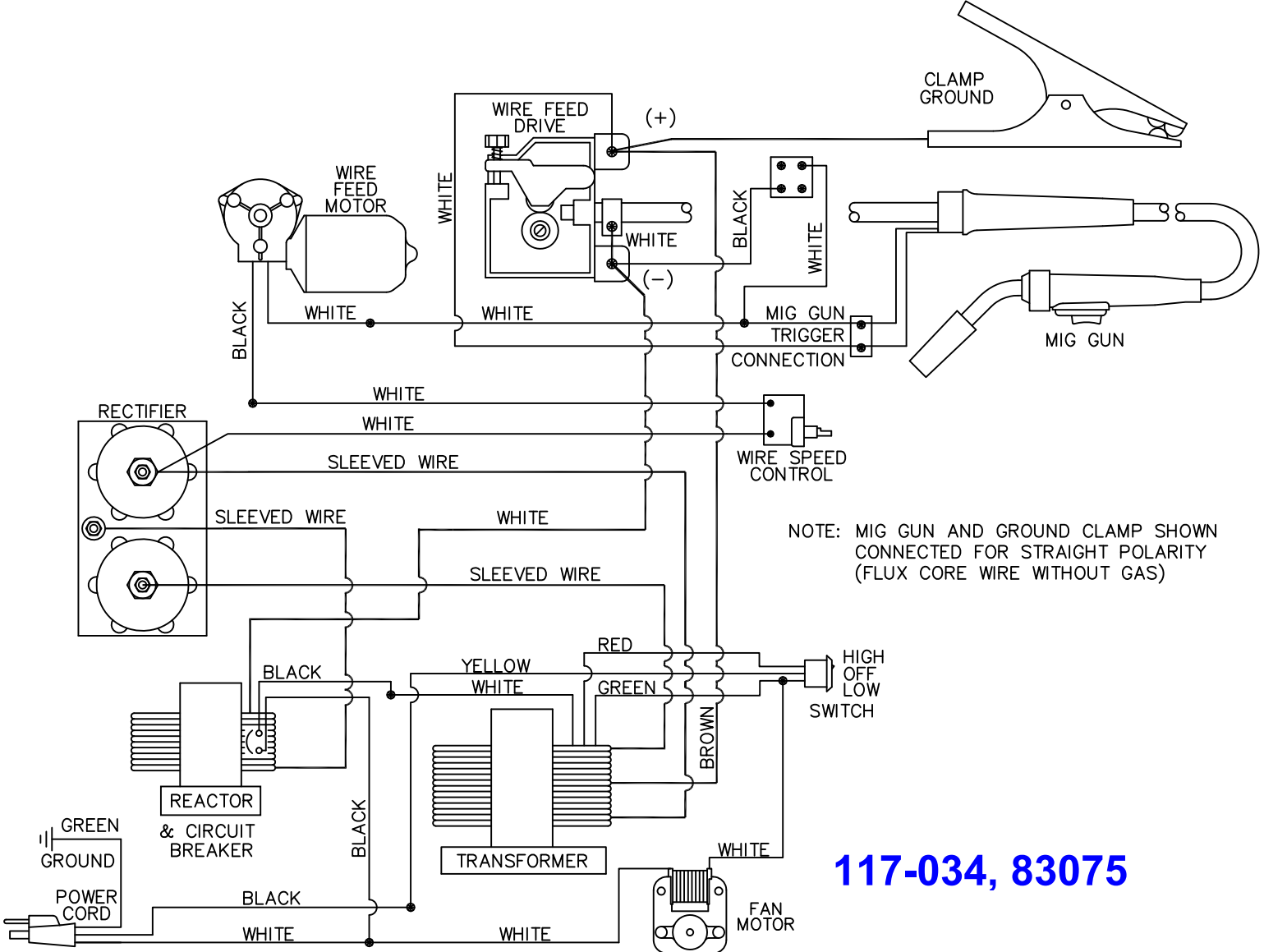
117-034, 75 Amp Quick Fix

Item	Lincoln Stock #	Customer #	Description
1		880-011-888	Main weld transformer
2		880-010-888	Reactor Coil w/ thermostat
		246-310-000	Thermostat only
3	860-905-666	860-905-666	Rectifier assy.
4	216-087-666	216-087-666	Fan motor
5		316-009-000	Fan blade
6		248-185-666	Power cord
7	312-076-666	312-076-666	Wire spindle
8	131-419-000	131-350-001	Tension kit
9	310-122-500	4323	Drive roller, 0.024 / 0.030 / 0.035
	860-616-002	4324	Aluminum Drive Roller
10		880-089-666	Tension arm only
11		239-123-666 239-208-000	Inlet guide tube
12	880-130-666		Quick release drive base assy. (includes 10-12)
13	216-089-666	216-089-666	Drive Motor w/gearbox
14		880-012-010	Handle
15		412-278-010	Hood hinge
16		410-568-020	Right side panel
17		410-691-060	Front panel
18	880-094-666	880-094-666	Wire speed control assy
19	246-041-666	246-107-000	Knob
20		246-177-666	High-Off-Low rocker switch
21		238-223-666	Ground cable assy.
22	238-155-000	238-224-100	Mig Gun (see 33-42 for parts)
23		410-557-020	Left side panel

Item	Lincoln Stock #	Customer #	Description
Not Shown (23-32)			
24		410-575-030	Hood
25		218-942-666	Polarity jumper
26		412-280-666	Gun connector clamp
27	239-010-300	41000	Ground clamp
28		2111	Gas conversion kit
29		2139	Wheel kit
30	331-482-300	37340	.030, 2# Flux wire E71-T
33	KP21T-50	43480, 334-203-300, KP1942-1, M15578	Steel welding nozzle
	KP21T-62	43300, 334-210-300, KP1942-3	Aluminum welding nozzle
	KP21-62-FAS	43290, 334-211-300, KP1956-1, M15577	Spot welding nozzle
34	KP11-25, KH710	43090, 334-203-300, KP2039-1B1, M15522	0.024 Contact Tips
	KP11-30, KH711	43100, 334-160-300, KP2039-2B1, M15523	0.030 Contact Tips
	KP11-35, KH712	43110, 334-161-300, KP2039-3B1, M15524	0.035 Contact Tips
35	334-228-000	334-228-000	Gas diffuser
36		334-217-000 (35-70)	Insulation
	334-227-000	334-227-000	Conductor Tube w/ insulation
37		334-219-000 (35-80A-1)	Handle Cap
38	S11604-51	084-019-000	Set Screw, #8-32 X 1/8"
39	334-221-000	35-90	Trigger
40	KP45-40-15	4331, KP1937-1	Steel liner
	KP1959-1	4325	Teflon liner
41		860-744-000	Trigger harness
42	Standard Hardware Item		6-32 X 7/16" screw for trigger

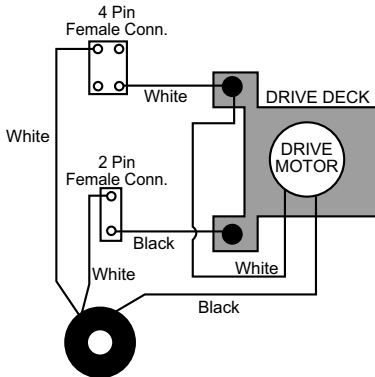
Model	Primary Input	Input Plug	Duty Cycle at Rated Output
117-034	120V, 15 amp	15A	20%

Rated Output	Voltage Settings	Agency Listing	Max Output
75 amps	2 (low / high)	CSA	70 amps



NOTE: MIG GUN AND GROUND CLAMP SHOWN CONNECTED FOR STRAIGHT POLARITY (FLUX CORE WIRE WITHOUT GAS)

117-034, 83075



WIRE SPEED CONTROL
(Old Style, Ceramic)

Used on 117-032, 117-033, 117-034

