

UPGRADE DESCRIPTION

Advanced Magnets

for the Zeman Compact, Conti & SR760



ADVANCED MAGNETS

The New Generation



STANDARD PACKAGE

Package includes three new generation magnets in sizes **Small, Medium & XLarge**.



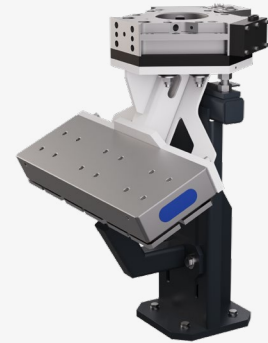
S - MAGNET (SR/SBA)

Payload:
0 - 10 kg | 0 - 22 lbs



M - MAGNET (SR/SBA)

Payload:
0 - 20 kg | 0 - 44 lbs



XL - MAGNET (SR/SBA)

Payload:
0 - 200 kg | 0 - 440 lbs

FURTHER OPTIONS

We additionally offer sizes in **Large & XXLarge**.

Not the right fit for your needs? Ask us about custom magnet sizes.



L - MAGNET

Payload:
0 - 50 kg | 0 - 110 lbs



XXL - MAGNET

Payload:
0 - 200 kg | 0 - 440 lbs

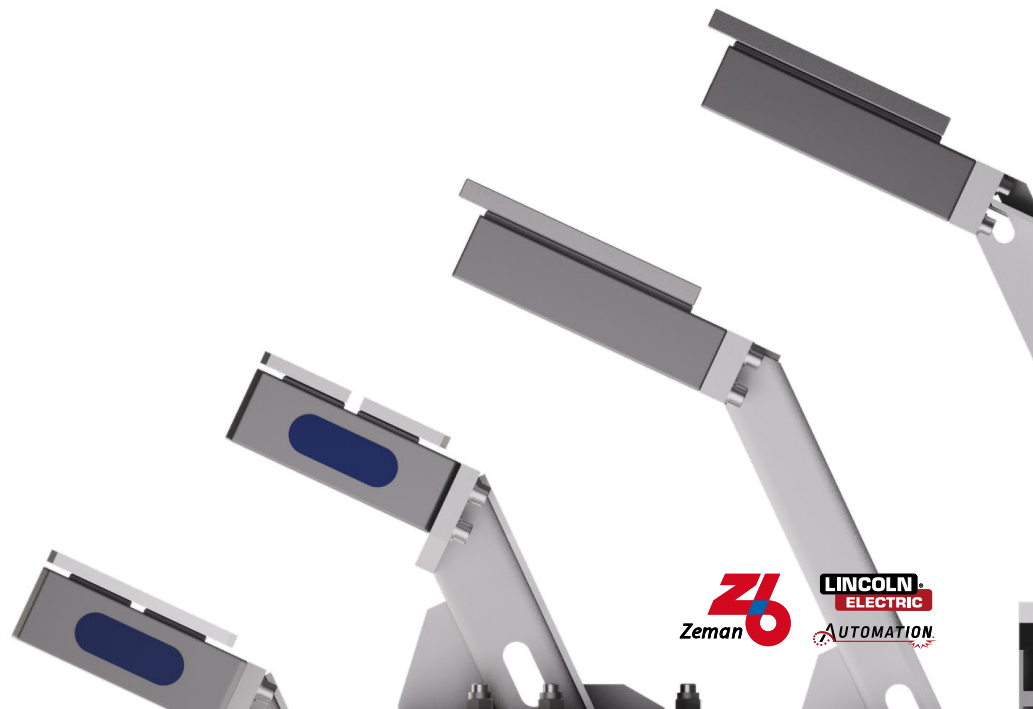
ADVANCED MAGNETS

About



How this upgrade improves your production process:

- 01 REDUCED MAGNETIC INFLUENCE**
The smaller magnets minimize the influence of magnetism on welding seams, improving precision and quality of vertical tacks due to shorter magnetic field penetration.
- 02 MORE GRIP**
Optimized pole arrangement enhances grip.
- 03 BETTER ACCESSIBILITY**
The longer arm and 25° mounting angle on the XL- Magnet help improve robot accessibility. The dimensions of the smaller magnets allow parts to be assembled closer together.
- 04 SPECIFIC IMPROVEMENTS FOR SINGLE RAIL MACHINES**
No constant and high air pressure is needed anymore as the polarization is altered using electricity.



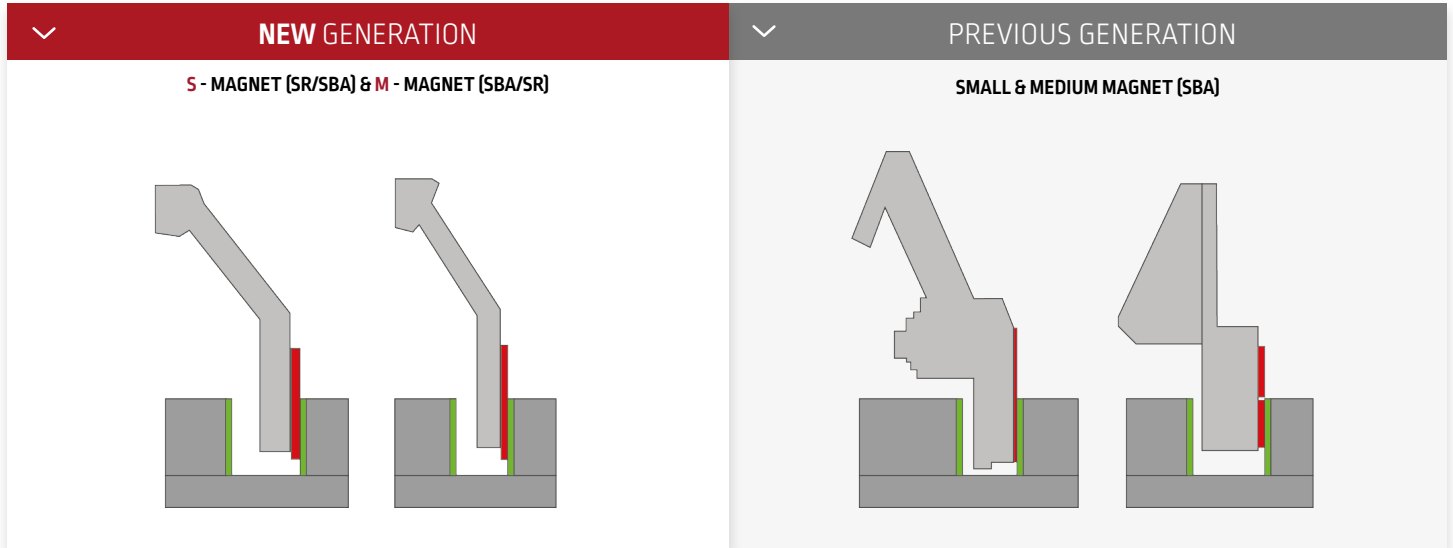
ADVANCED MAGNETS

Improvements



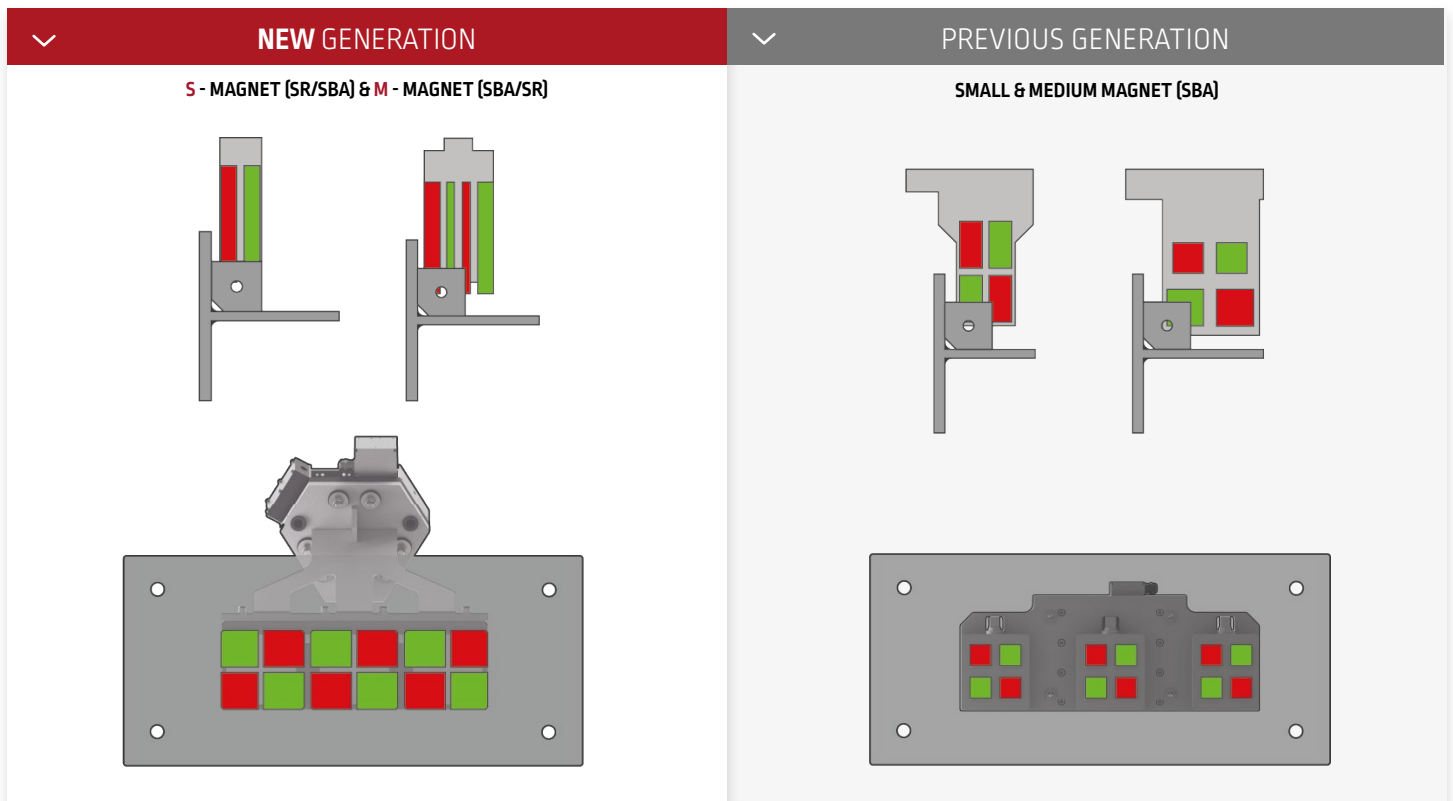
IMPROVED MEASUREMENTS

Assemble parts closer together because of the new magnets' smaller dimensions.



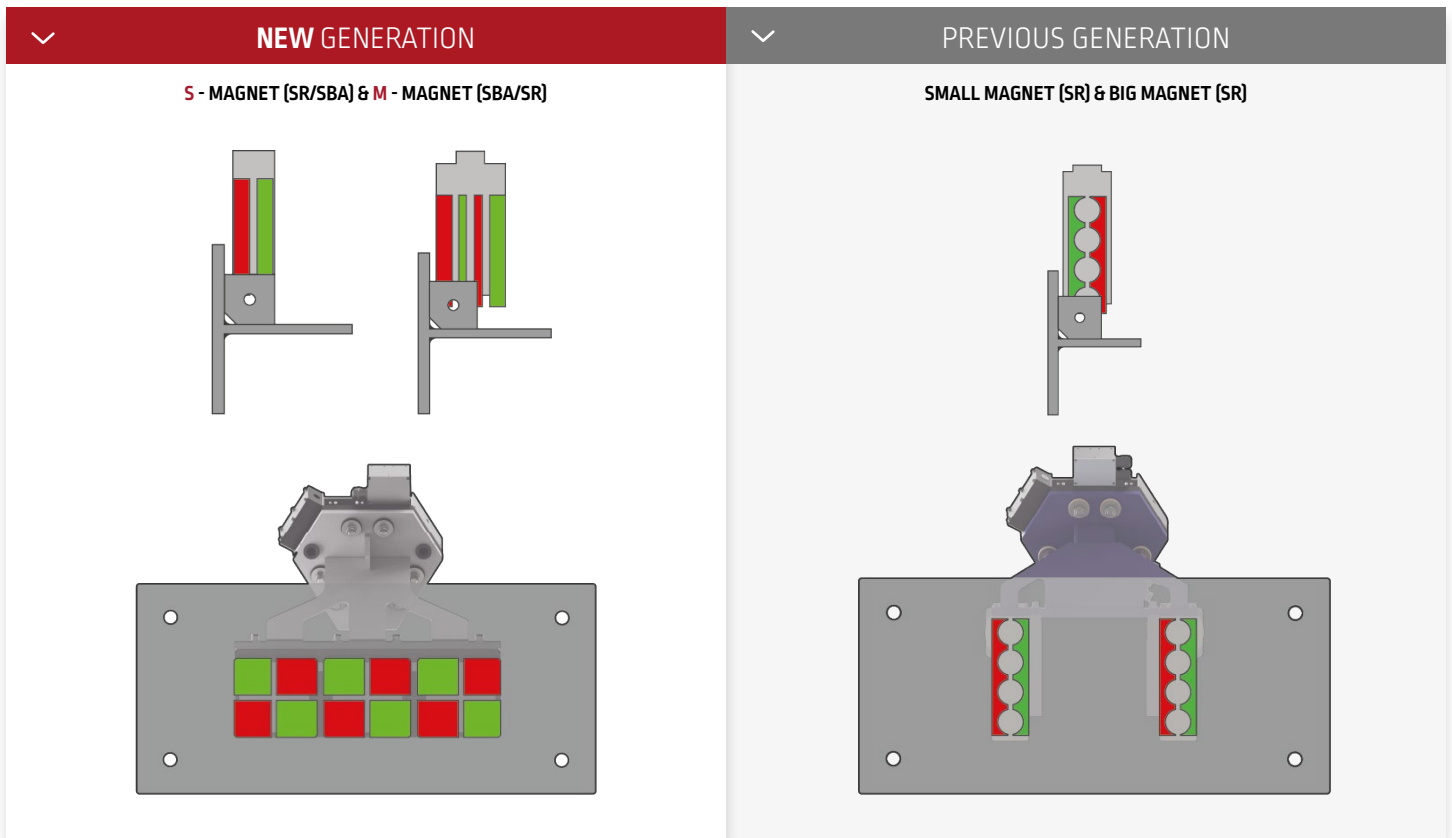
OPTIMIZED POLE ARRANGEMENTS

New pole arrangements lead to a better grip on parts.



ADVANCED MAGNETS

Improvements



NEWLY ADDED FEATURE

We added a new feature that allows you to create your own add type & customize its parameters for all three directions (X/Y/Z).

ORDER

Allows you to activate the different directions and activate the movement sequentially

PREPOS

Set pre-position distance

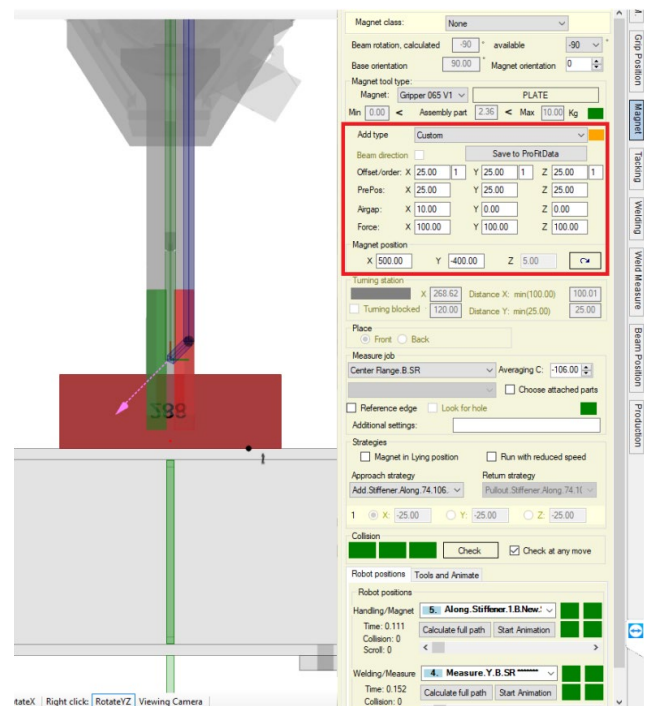
AIRGAP

Attach a part with an Airgap

UPCOMING FEATURES AVAILABLE FOR NEW GENERATION

FORCE

Change the pressing force in each direction



ADVANCED MAGNETS

Comparison



SBA & SR - NEW GENERATION



S - MAGNET (SR/SBA)

Dimensions:
65 / 270 / 70 mm | 2.6 / 10.6 / 2.8 inch
(length / width / height)

Payload:
0 - 10 kg | 0 - 22 lbs



M - MAGNET (SR/SBA)

Dimensions:
120 / 270 / 70 mm | 4.7 / 10.6 / 2.8 inch
(length / width / height)

Payload:
0 - 20 kg | 0 - 44 lbs



M2 - MAGNET (SR/SBA)

Dimensions:
180 / 230 / 70 mm | 7 / 9 / 2.8 inch
(length / width / height)

Payload:
0 - 50 kg | 0 - 110 lbs



L - MAGNET (SR/SBA)

Dimensions:
500 / 150 / 70 mm | 19.7 / 6 / 2.8 inch
(length / width / height)

Payload:
0 - 200 kg | 0 - 440 lbs



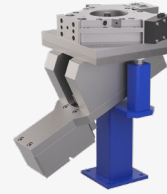
XL - MAGNET (SR/SBA)

Dimensions:
700 / 150 / 70 mm | 27.5 / 6 / 2.8 inch
(length / width / height)

Payload:
0 - 200 kg | 0 - 440 lbs



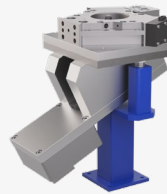
SBA - PREVIOUS GENERATION



SMALL MAGNET (SBA)

Dimensions:
100 / 230 mm | 3.9 / 9 inch
(length / width)

Payload:
0 - 10 kg | 0 - 22 lbs



MEDIUM MAGNET (SBA)

Dimensions:
160 / 230 mm | 6.3 / 9 inch
(length / width)

Payload:
0 - 40 kg | 0 - 88 lbs



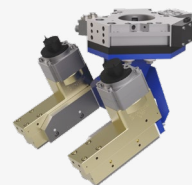
BIG MAGNET (SBA)

Dimensions:
700 / 220 mm | 27.6 / 8.7 inch
(length / width)

Payload:
0 - 200 kg | 0 - 440 lbs



SR - PREVIOUS GENERATION



BIG MAGNET (SR)

Dimensions:
390 / 220 mm | 15.4 / 8.7 inch
(length / width)

Payload:
0 - 200 kg | 0 - 440 lbs



SMALL MAGNET (SR)

Dimensions:
90 / 280 mm | 3.6 / 11 inch
(length / width)

Payload:
0 - 40 kg | 0 - 88 lbs

ADVANCED MAGNETS

Replacement Process



REACH OUT

01

INITIAL CONTACT

Express the need to exchange a magnet, whether you want to benefit from new software features, **minimize the influence of magnetism on welding seams**, or the requirements for the parts you must handle has changed.

PROCESSING YOUR INQUIRY

02

EVALUATION

Our expert team will get in contact with you and will determine which magnet sizes are most suitable for you.

CHOOSE SERVICE

03

UPGRADE PREPARATION

Our service team will reach out to you to discuss a possible magnet exchange date together with a quote. Exchanging magnets will be done by a Zeman expert to ensure proper installation.

MAGNETS GET PREPARED FOR SHIPPING

04

LOCAL SERVICE

Our technician will **exchange the magnets** on-site, execute any **software-related updates**, and run through a calibration process. The technician will run **multiple test protocols** to verify that the machine meets the **operational standards**.



ADVANCED MAGNETS

Contact



„I HAVE OTHER REQUIREMENTS“ **LINCOLN ELECTRIC HAS YOU COVERED.**

We understand that every business has unique challenges and opportunities. That's why we specialized in creating custom solutions tailored specifically to your needs.

WE RAISED YOUR INTEREST?

Get in touch with our sales team by sending an email to spareparts@zebau.com



**Zeman Bauelemente
Produktionsgesellschaft mbH**
A Lincoln Electric Company
Schlossfeld 5
8811 Scheifling | Austria
Phone: +43 3582 2208-0
E-mail: info@zebau.com
www.zebau.com

The Lincoln Electric Company
22801 Saint Claire Avenue
Cleveland OH 44117-1199 USA

FOLLOW US ON SOCIAL MEDIA



Zeman Machines



@zemanmachines



Zeman Machines



Zeman Machines