

LINCOLN ELECTRIC

THE REVEAL™ ACTIVATION PLATFORM

WHAT IS THE REVEAL PLATFORM?

The REVEAL Platform is an embedded software package that is integrated into all Lincoln Electric Advanced Process Welding equipment. Using a simple scanning function, the REVEAL Platform allows users to activate certain process-optimized solutions that use multiple Lincoln Electric components – such as a power source, specific weld mode, and consumable products – in order to maximize welding performance and deliver the true value of the solution.



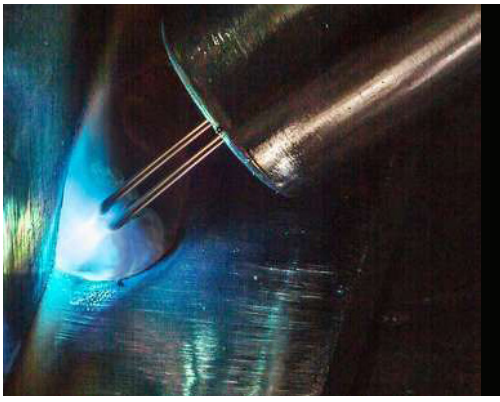
The REVEAL Platform is as simple as scan and go. Using preloaded access cards, the REVEAL Platform allows users to activate and use specific mode(s) for a set amount of welding wire weight or arc hours.

Once an access card is scanned, the Lincoln Electric power source will authorize and display the registered quantity and will unlock the specific weld mode(s) until the registered quantity is used.

AS SIMPLE AS SCAN & GO:

1. Scan the access card via the Gateway pendant provided with your system to authorize and register a preset amount of Solution credit associated with the access card.
2. Once registered, the power source will activate the appropriate weld mode(s). Select the weld mode desired and you are ready to weld!



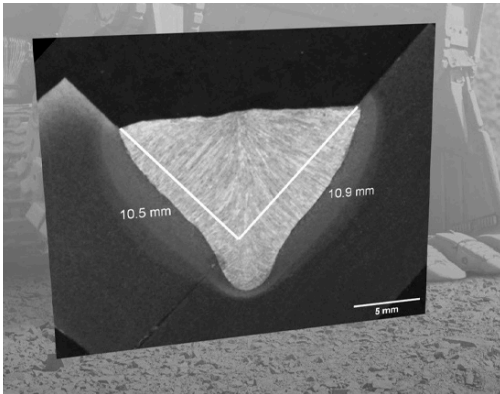


HYPERFILL® AND REVEAL ACTIVATION PLATFORM

HyperFill, a patented Twin-Wire MIG solution, utilizes a propriety waveform combined with Lincoln Electric's premium welding wire to deliver optimized arc performance. To access the propriety waveform, product activation through the REVEAL Platform is required.

HYPERFILL® REVEAL ACCESS CARD OPTIONS

Product Number	Card Type	Credit Value
K4966-88	HyperFill Steel	88 lbs
K4966-500	HyperFill Steel	500 lbs
K4966-1000	HyperFill Steel	1000 lbs
K4967-32	HyperFill Steel	32 kg
K4967-250	HyperFill Steel	250 kg
K4967-500	HyperFill Steel	500 kg



PROCESS HDT™ AND REVEAL ACTIVATION PLATFORM

Process HDT combines a high-deposition waveform with a patented metal-cored wire to produce deposition rates that exceed tandem MIG, with the streamlined set-up of a single-wire process. To access the waveform, product activation through the REVEAL Platform is required.

PROCESS HDT™ REVEAL ACCESS CARD OPTIONS

Product Number	Card Type	Credit Value
K4999-10	Process HDT Steel	10 Arc Hours
K4999-250	Process HDT Steel	250 Arc Hours
K4999-500	Process HDT Steel	500 Arc Hours



FAQS

What happens when the system runs out of credits?

Prior to the system reaching zero, the scanner will display a low level warning. If no credits are added and the system credit reaches zero, the current weld will be allowed to complete and then the system will trigger an error with a message stating that the system credits have reached zero and a new access card must be scanned in order to continue using the solution.

Can I scan multiple Access cards at once?

Yes. Access cards can be scanned at any time and system credit total can be accrued from multiple card scans up to the maximum amount allowed.

Does the Gateway Pendant come as a part of my HyperFill System or Process HDT Solution?

Yes, the Gateway Pendant is now provided at no cost with any HyperFill Ready-Pak® system or Process HDT Solution. This also includes building a custom package or upgrading an existing power source for HyperFill or Process HDT.

What other functionality does the Gateway Pendant provide?

In addition to license activation, the Gateway Pendant also provides real-time weld data, last weld summary information, accumulated weld data for the current day or week, and upgrade/diagnostic capabilities.

Does the Gateway Pendant have to remain connected at all times?

Yes, license activation as well as the weld data functions require that the pendant remain connected to your system at all times. There are multiple options for connecting the pendant to your system outlined in the Gateway manual and quick start guide.

What is the process for installing a Gateway Pendant on an existing Power Wave or Pipefab system?

Very simple, download and install the latest software bundle from powerwavesoftware.com for your Power Wave or PIPEFAB™ and then the Gateway Pendant is plug and play ready. Once connected, scan a REVEAL Access card and you are ready to weld.

FAQS CONT.

Do I need to use REVEAL Activation for all Lincoln Electric weld modes?

No. The standard weld modes on the Power Wave or PIPEFAB power source are active and available at all times. Only the specialized HyperFill & Process HDT weld modes require REVEAL activation.

How do I purchase REVEAL access cards and how much do they cost?

REVEAL Access cards are available just like any Lincoln Electric product. They have standard part numbers and are available in various credit increments for easy and efficient application. Check cost through your local Lincoln Electric representative or distributor.

How do I scan an Access card to load my system?

Access cards are scanned through the Gateway pendant connected to the Power Wave or PIPEFAB power source. The access card is waved over the pendant scanner, it confirms the scan and displays the total system credits loaded into the power source.

Can I reuse / reload a purchased Access card?

Each Access card is good for a single scan and is no longer active after its initial scan into the system.

Specialized Waveform Activation Capability with Power Wave® and PIPEFAB™ Systems
Your purchase of a Lincoln Power Wave or PIPEFAB Welding System comes with (i) a license to use Lincoln Electric standard Power Wave / PIPEFAB waveforms, and (ii) specialized waveform capability, which requires the purchase of premium Lincoln Electric wire or purchase of a separate license. Unless one of these is purchased, the specialized waveforms will not be available for use on these machines, and only the standard Power Wave / PIPEFAB waveforms are usable.

Customer Assistance Policy

The business of The Lincoln Electric Company® is manufacturing and selling high quality welding equipment, consumables, and cutting equipment. Our challenge is to meet the needs of our customers and to exceed their expectations. On occasion, purchasers may ask Lincoln Electric for information or advice about their use of our products. Our employees respond to inquiries to the best of their ability based on

information provided to them by the customers and the knowledge they may have concerning the application. Our employees, however, are not in a position to verify the information provided or to evaluate the engineering requirements for the particular weldment. Accordingly, Lincoln Electric does not warrant or guarantee or assume any liability with respect to such information or advice. Moreover, the provision of such information or advice does not create, expand, or alter any warranty on our products. Any express or implied warranty that might arise from the information or advice, including any implied warranty of merchantability or any warranty of fitness for any customers' particular purpose is specifically disclaimed.

Lincoln Electric is a responsive manufacturer, but the selection and use of specific products sold by Lincoln Electric is solely within the control of, and remains the sole responsibility of the customer. Many variables beyond the control of Lincoln Electric affect the results obtained in applying these types of fabrication methods and service requirements.