

LINCOLN ELECTRIC EUROPE



Service Notice N°: ESN0078 Rev.01

Date: 22 March 21

Random shut down of front panel PCB

Product	K Number	Code Number	Serial Numbers
PRESTOTIG 160 PFC	W000273518	-	
PRESTOTIG 180 FORCE	W000382577	-	all serial numbers below P12104xxxxx
PRESTOTIG 220 FORCE	W000382578	-	
CITOTIG 1600 HPF	W000273517	-	
CITOTIG 1800 FORCE	W000382579	-	
CITOTIG 2200 FORCE	W000382580	-	
INVERTEC 175TP	K14169-1	50394	



WARNING

Be sure that only qualified individuals perform all installation, operation, maintenance and repair procedures. Lincoln Electric is not responsible for damages caused by improper installation, improper care or abnormal operation.

Before opening or disassembling any parts of the product, the power must be turned OFF and the product must be disconnected from the input power source. Only Lincoln trained service technicians are authorized to perform these modifications.

Explanation of the Problem

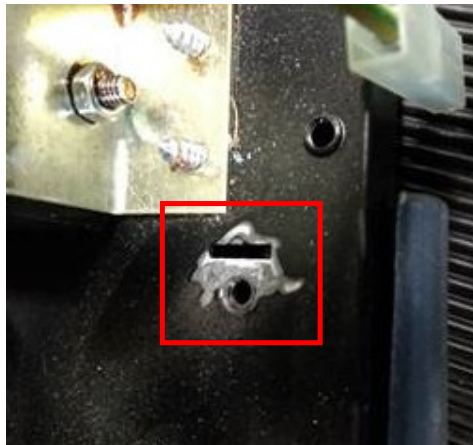
Randomly, after starting or during welding, the front panel turns off completely and the welding arc is extinguished

Correction of the Problem

Problem can be solved by cleaning from the paint the area under the earth connectors. In addition, **only on the INVERTEC 175TP**, replacing the 7 metal standoff that are fixing the HF board (W000274816) and Control Panel PCB (R-6042-086-2R) with plastic ones.

Correction of the Problem step by step for Invertec 175TP (K14169-1), PRESTOTIG 160 PFC, PRESTOTIG FORCE 180,220 and CITOTIG 1600 HPF, CITOTIG FORCE 1800, 2200 (W000273518,W000382577, W000382578, W000273517, W000382579, W000382580)

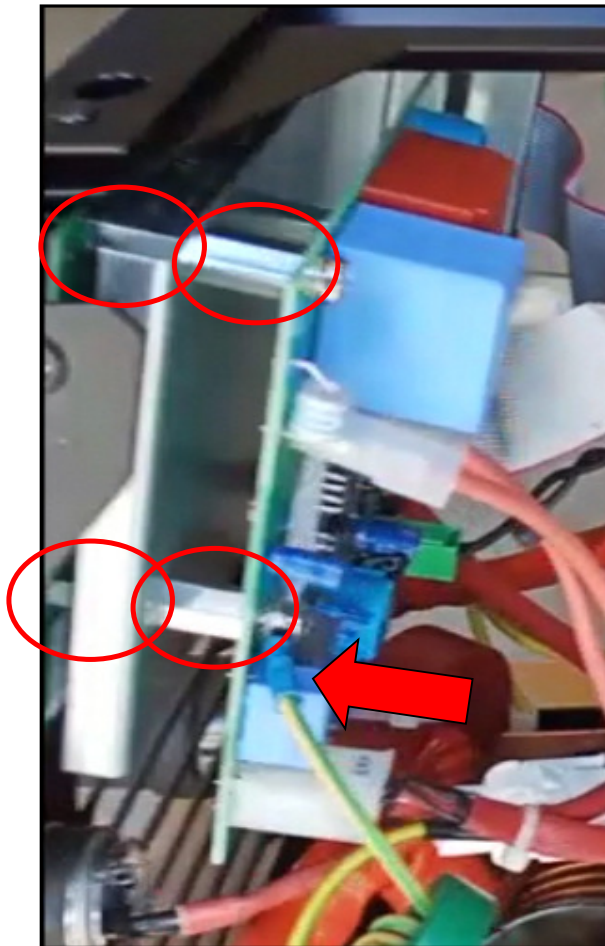
1. Remove the machine cover.
2. Locate all earth/ground connectors fixed on the machine metal frame
3. Remove the earth/ground wires from the connectors
4. Remove the earth/ground connectors from the machine metal frame and remove the paint that is present between the connector and the frame as shown into the below picture



5. Reinstall the earth/ground connectors to the machine metal frame
6. Connect again all the earth/ground wires to the connectors.
7. Close the machine with the cover.

Correction of the Problem for Invertec 175TP (K14169-1) 7 wrong metal standoff

1. Remove the machine cover.
2. Locate the HF PCB and the Control Panel PCB mounted on the back of the machine front panel (the following picture is showing you the four standoff on the left side, three more are on the right side)



3. Remove the 3 screws that are fixing the HF PCB to the machine and remove the HF PCB from the machine.
4. Remove the 3 metal stands off and the metal plate.
5. Remove the 4 stands off that are fixing the Control Panel PCB and replace them with 4 plastic ones type: M4x15 M/F HEX NYLON - W8604080
6. Reassembly the metal plate, the 3 plastic stands off and the HF PCB, paying attention to connect again the earth cable (indicated by the red arrow into the above picture)
7. If you are not able to find the plastic stands off in your local market, please ask to send some to your attention to Lukasz Wardencki