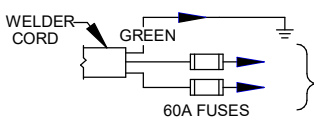


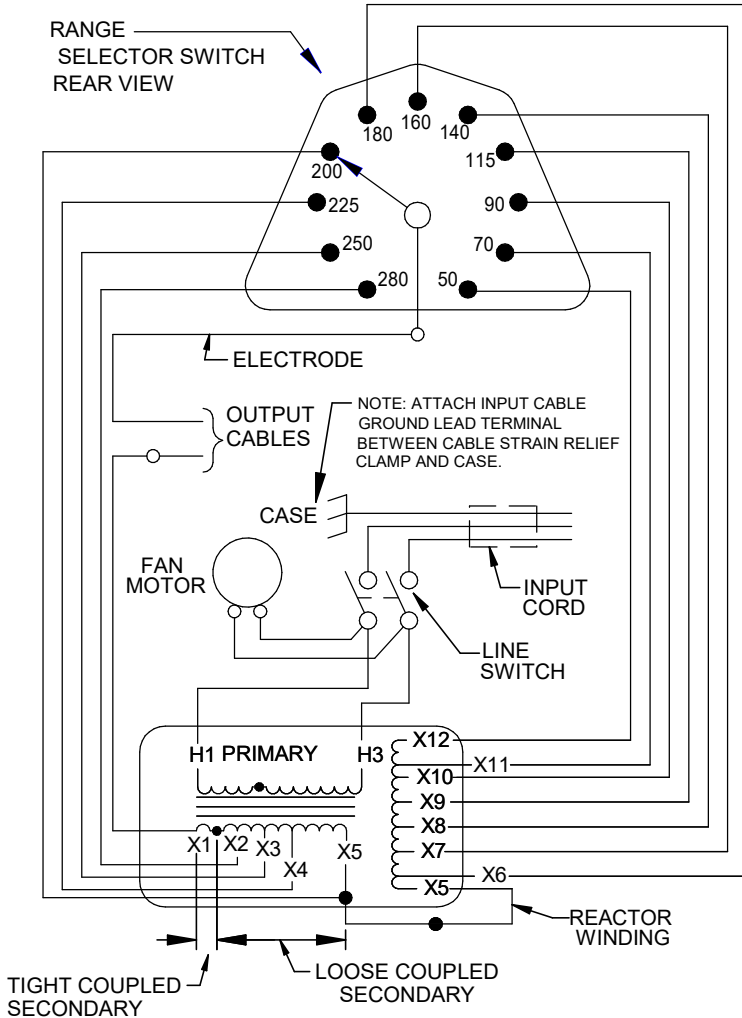
AC-225 WELDER MACHINE SCHEMATIC S28364 REV: B

CUSTOMER CONNECTION OF WELDER CORD TO POWER SUPPLY



TO A SYSTEM GROUNDING WIRE, TO A COLD WATER LINE OR TO A PIPE DRIVEN EIGHT FEET INTO THE GROUND. PER NATIONAL ELECTRICAL CODE.

TO HOT WIRES OF A 3 WIRE EDISON SINGLE PHASE SYSTEM OR ACROSS ONE PHASE OF A 3 PHASE SYSTEM. ANSI ELECTRICAL SYMBOLS PER E1537.



THE LINCOLN ELECTRIC COMPANY

World's Leader in Welding and Cutting Products
Sales and Service through Subsidiaries and Distributors Worldwide
Cleveland, Ohio 44117-1199 U.S.A.