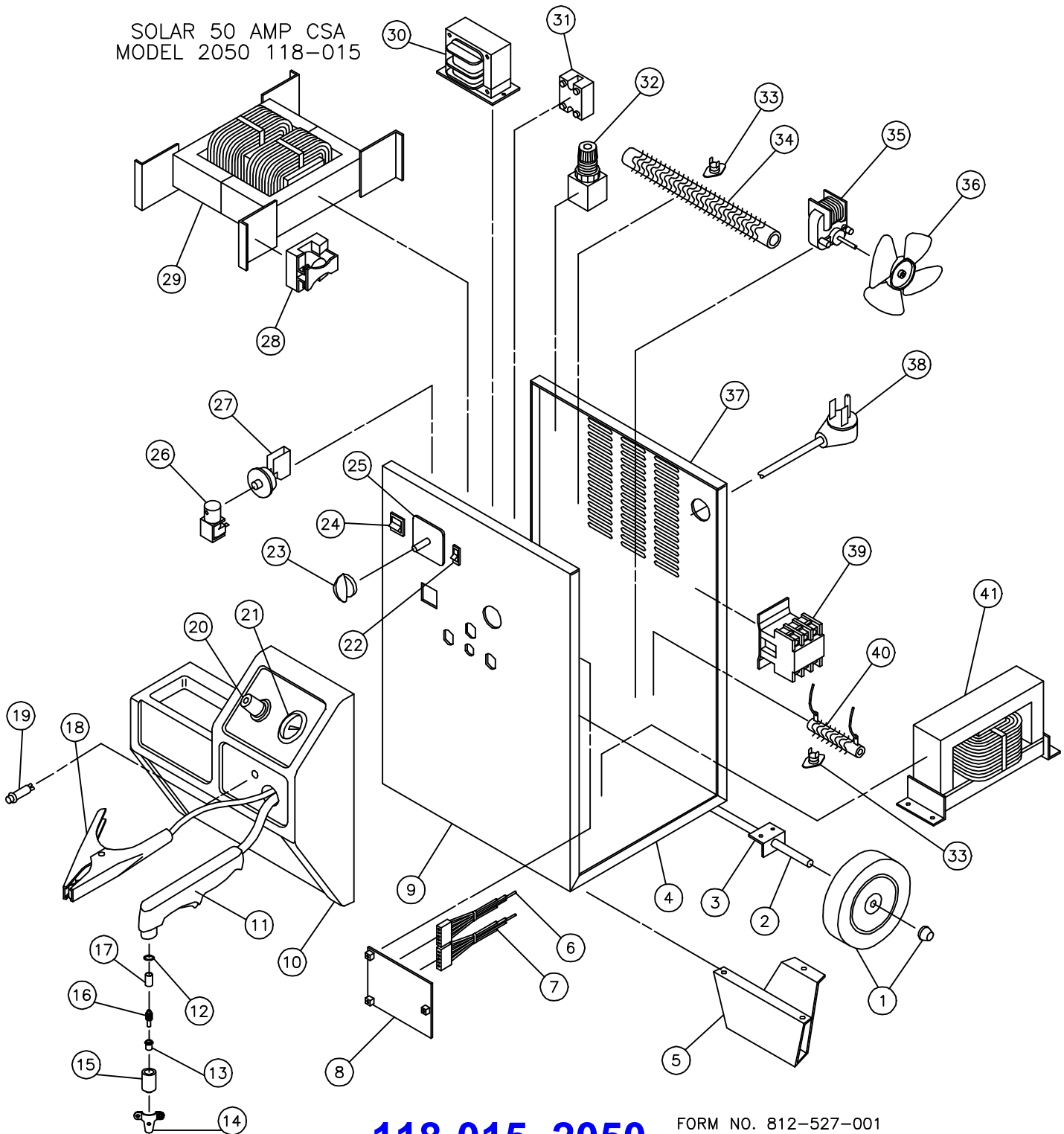


SOLAR 50 AMP CSA
MODEL 2050 118-015



118-015, 2050

FORM NO. 812-527-001

118-015, 2050

Item	Lincoln Stock #	Customer #	Description
1		413-030-666	Wheel with Hub
2		413-048-666	Axle
3		412-329-016	Wheel Mtg. Brackets
4		410-617-016	Base
5		412-328-016	Foot
6		880-181-666	10 Pin Wire Harness
7		880-139-666	9 Pin Wire Harness
8	880-102-666	880-102-666	Circuit Board
9		410-620-030	Front panel
10		312-116-666	Nose
11	238-456-000	238-285-100	Torch Assembly
12	512-087-908	44050	O-Rings
13	334-289-908	44510	High Current Nozzles (5)
14		4416, 44160	Standoff
15	334-290-908	44530	Nozzle Cap
16	334-287-908	44500	Electrodes (3)
17	334-288-908	44520	Swirl Ring
18		238-228-666	Ground Cable Assy.
19		296-135-666	Thermal overload light
20	254-004-666	254-004-666	Regulator
21		251-003-666	Pressure Gauge
22		246-176-666	Run/Setup Switch

Model	Primary Input	Input Plug	Duty Cycle at Rated Output
118-015	230V, 66 amp	50A	42%

Item	Lincoln Stock #	Customer #	Description
23		246-224-666	Knob
24		246-223-666	Power Switch
25		246-222-666	Amperage selector switch
26		246-206-666	Solenoid
27		252-004-666	Pressure Switch
28	246-199-666	246-199-666	Pilot Arc Relay
29		880-141-888	Transformer
30		880-106-888	Control Transformer 230Vac to 20 & 24Vac
31	244-080-666	244-080-666	Rectifier
32	254-005-666	254-005-666	Pre-Regulator (set at 105PSI)
33	216-053-666	216-053-666	Thermostat
34	245-105-666	245-105-666	2Ω, 420 Watt Resistor
35	216-086-666	216-086-666	Fan Motor, 230Vac
36	316-007-300	316-007-300	Fan Blade
37		410-629-016	Back Panel
38		248-178-666, 248-289-000	Power Cord, 8/3, 8.5' w #10 Spade(2) & #10 Ring Term.
39	246-165-666	246-165-666	Contactora
40	880-134-666	880-134-666	1.5Ω, 160 Watt Resistor
41		880-137-888	Reactor
42		412-332-110	Handle (Not Shown)
43		410-630-080	Cover w/access Panel (Not Shown)
44		410-530-020	Access Panel (Not Shown)

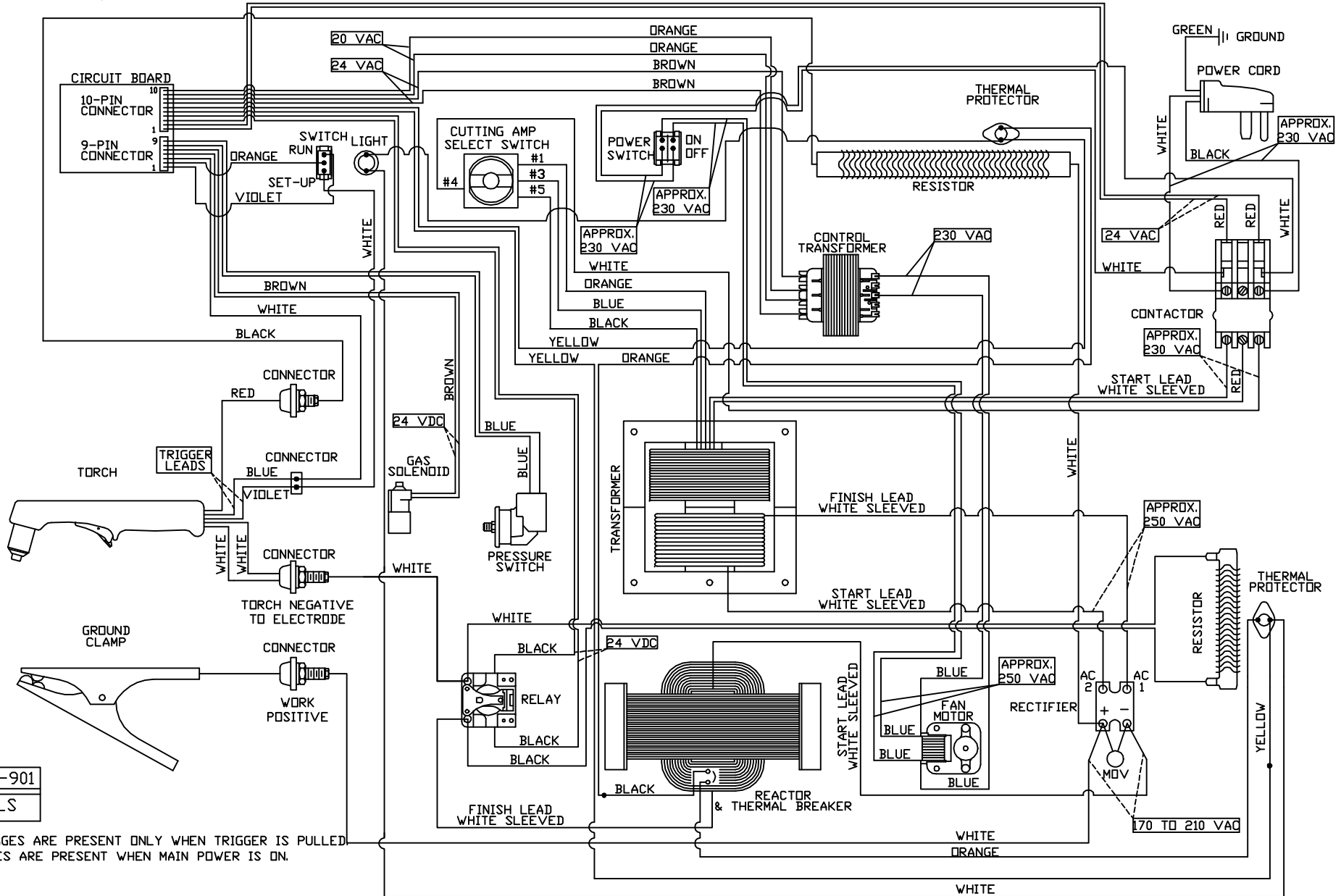
This unit came with a one year warranty

8-21-07

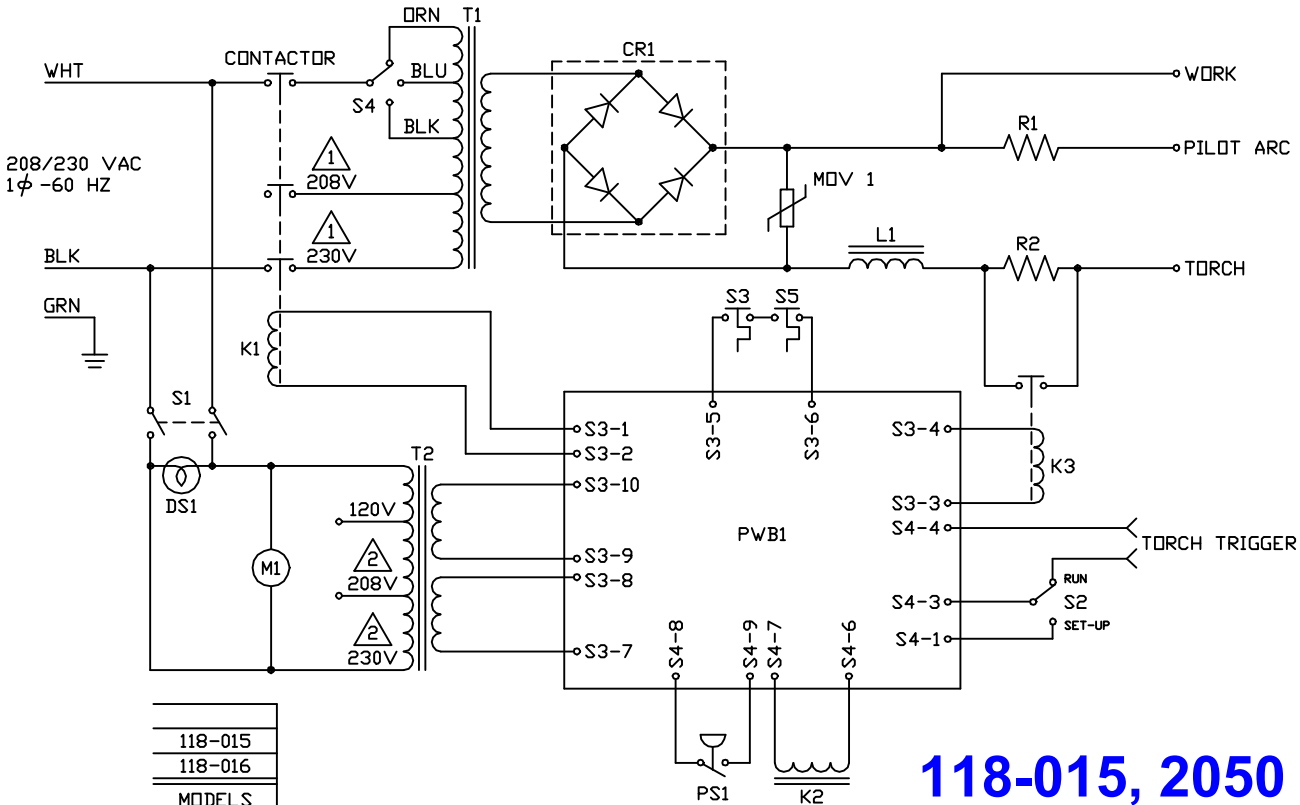
Rated Output	Voltage Settings	Agency Listing	Max Output
50 amps	3	CSA	50 amps

118-015, 2050

WIRING DIAGRAM



118-015-901
 MODELS



SYM	DESCRIPTION
CR1	100 A, 1200 V, FULL WAVE BRIDGE
K1	40 A, 3 POLE, 24 VAC COIL
K2	GAS SOLENOID N.C. 24 VDC COIL
K3	RELAY, 30A, SPST N.O. 24 VDC COIL
L1	40 mH, 50A REACTOR
M1	FAN MOTOR
MOV1	TRANSIENT PROTECTOR
PS1	PRESSURE SWITCH
PWB1	CONTROL CIRCUIT BOARD
R1	2 Ω , 420 W RESISTOR
R2	1.5 Ω , 100 W RESISTOR
S1	POWER SWITCH, DPST, LIGHTED (DS1)
S2	RUN/SET-UP SWITCH, SPDT
S3	THERMAL BREAKER
S4	3-POSITION SWITCH
S5	THERMAL BREAKER
T1	MAIN CUTTING TRANSFORMER
T2	CONTROL TRANSFORMER

NOTES:

1 SHOWN WIRED FOR 230V OPERATION. FOR 208V OPERATION, EXCHANGE WIRES INDICATED AT CONTACTOR.

2 SHOWN WIRED FOR 230V OPERATION. FOR 208V OPERATION, EXCHANGE WIRES INDICATED AT TRANSFORMER (T2).

118-015
118-016
MODELS

118-015, 2050