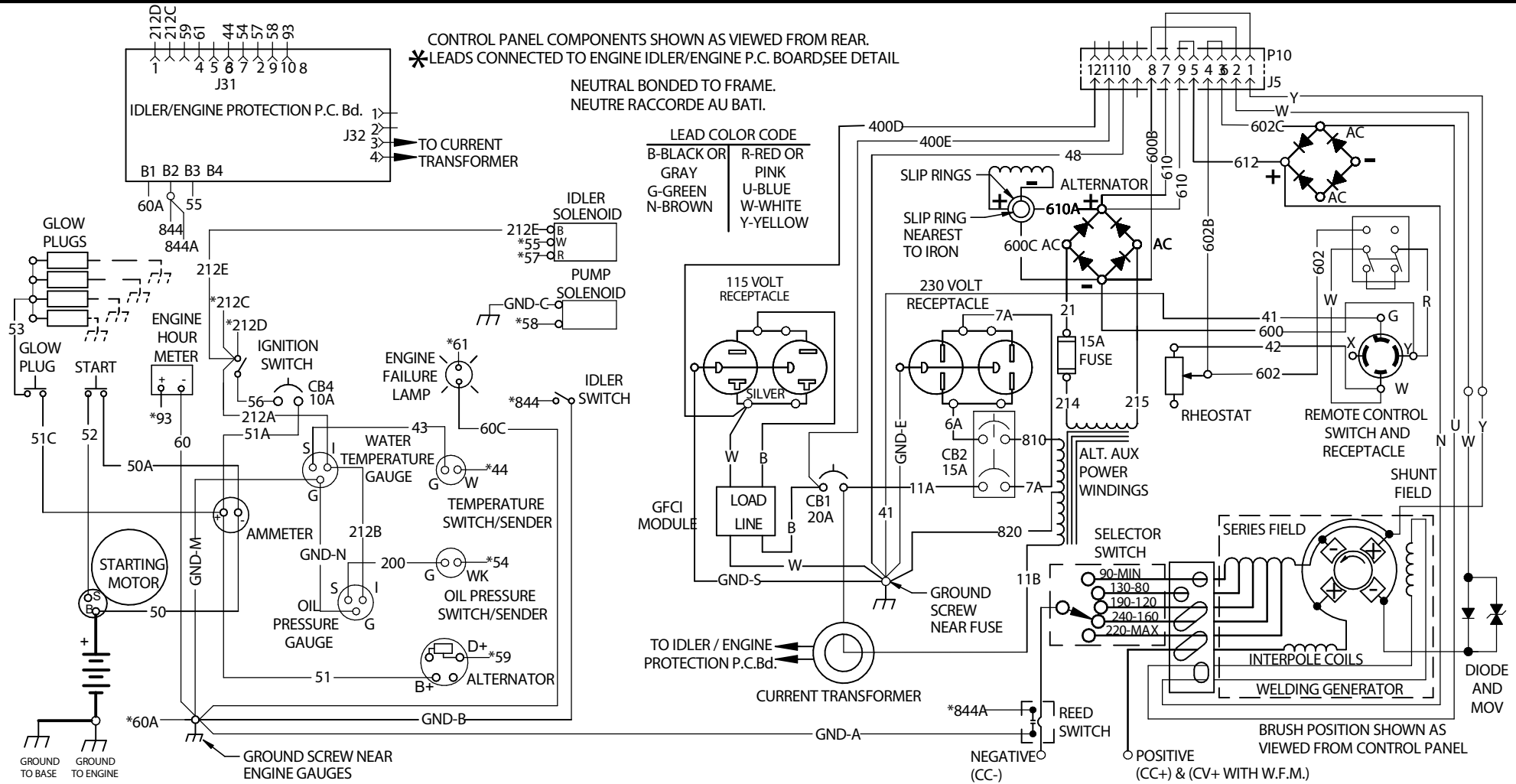
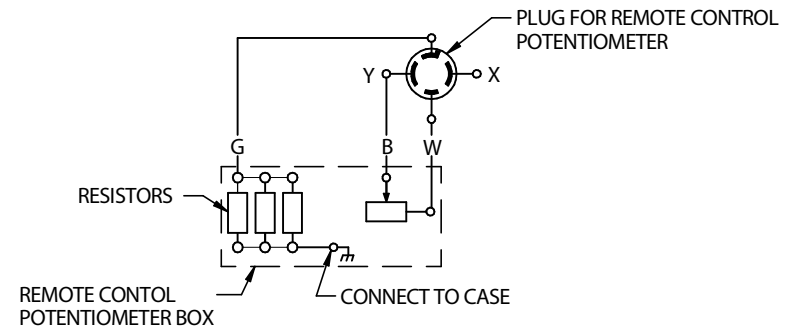


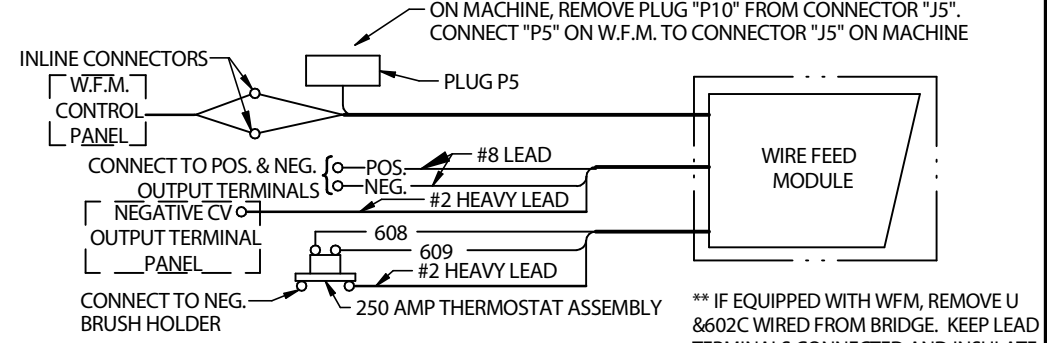
CLASSIC 300D WIRING DIAGRAM M21971 REV: B



K924-5 REMOTE CONTROL (OPTIONAL)



WIRE FEED MODULE (OPTIONAL)



** IF EQUIPPED WITH WFM, REMOVE U & 602C WIRED FROM BRIDGE. KEEP LEAD TERMINALS CONNECTED AND INSULATE WITH ELECTRICAL TAPE.

MACHINE MUST NOT BE RUNNING WHEN MAKING THESE CONNECTIONS.

