

POWERED AIR PURIFYING RESPIRATORS

PAPR

EUROPUREPLUS™ SERIES



www.lincolnelectric.eu

LINCOLN®
ELECTRIC

LINCOLN ELECTRIC RESPIRATORY PROTECTION SOLUTION – PAPR

EuropurePLUS™ RANGE TH3 Class

Versatile protection with added value and modularity!

Ergonomic and smart protection. Fully integrated safety, with respiratory, head, eye and skin protection options. Designed to work together for maximum comfort.



WELDING/CUTTING/ GRINDING



WAVE3.0 LS

see page X



5500 LS

see page 9

CUTTING/ GRINDING



CLEAR

see page 6



LE FACE SHIELD

see page 3

EuropurePLUS™ **WAVE 3.0 LS**

POWERED AIR PURIFYING RESPIRATOR **TH3 Class**

NEW

The EUROWAVE 3.0 LS SERIES lens offers **top-tier 1/1/1 optical clarity, ensuring consistent brightness** and **distortion-free vision at any angle**. Airflow is directed from the top of the helmet, complemented by lateral ventilation from both sides for enhanced comfort and cooling.

Weight : 635 + 1020 g

**WELDING,
CUTTING,
GRINDING**



What's Included

- **EuropurePLUS™ WAVE 3.0 LS with Powered Air purifying Respirator**
- Respirator welding helmet
- Front cover lens x5
- Inner cover lens x2
- Pre-filter
- P3 filter
- Lithium Ion Battery
- Spark screen
- Battery Charger
- Hose with cover
- Padded Belt, headcovering, shoulder strap
- Airflow Indicator
- Bandana
- Decal sheet
- Duffle Bag



**TOP-TIER
1/1/1 OPTICAL
CLARITY**

**EUROPURE PLUS™
WAVE 3.0 LS**
(including the blower)

W403677

**SMART
BLOWER
SYSTEM**

see page X



Blower

EN ISO 16321-1:2022,
EN ISO 16321-2:2021, EN 12941 TH3

CE Certified
(EU) 2016/425 (PPE) 2011/65/EU (ROHS)

Extra Large Auto-Darkening Lens

The **6 014 mm²** auto darkening lens provides a large field of view to increase versatility and operator control.



see page X

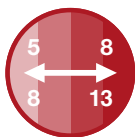
EuropurePLUS™ **WAVE 3.0 LS**

EXTERNAL GRINDING MODE

Low-profile external grind button provides seamless transition between weld & grind mode



Variable shades



Arc sensors



Optical class



Low TIG amps rated



Grind mode / Shade control



DIN 3

Lens switching speed

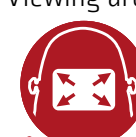


1/25,000 sec

Comfort



Viewing area



97 mm x 60 mm

Class



TH3
Highest level of respirator protection

EuropurePLUS™ WAVE 3.0 LS

Applications	Optical Clarity Rating	Lens Switching Speed (sec)	Number of Arc Sensors	Variable Shade Range/Control	Optic Technology	Magnifying "Cheater" Capable Lens	Grind Mode Shade / Control	TIG Amp Rating	Light Sensitivity Control	Delay Control Dark to Light [sec]	Cartridge Size (mm)	Auto-Darkening Viewing Area
Welding, Cutting, Grinding	1/1/1	1/25,000	4	Digital; 5 to 13;	LS Technology	Yes	DIN 3/External	≥ 2 A /DC ≥ 2 A /AC	Variable	0,05-1,0 s fully adjustable	133x 114 mm	97 mm x 62 mm

Advanced Headgear

- Soft, padded front headband helps eliminate pressure points
- Two adjustable top head straps help distribute weight for increased comfort
- Ratchet adjustable rear headband allows operator to set tightness
- Turn and slide forward and backward adjustments



EuropurePLUS™ **WAVE 3.0 LS**



Comfortable Headcovering

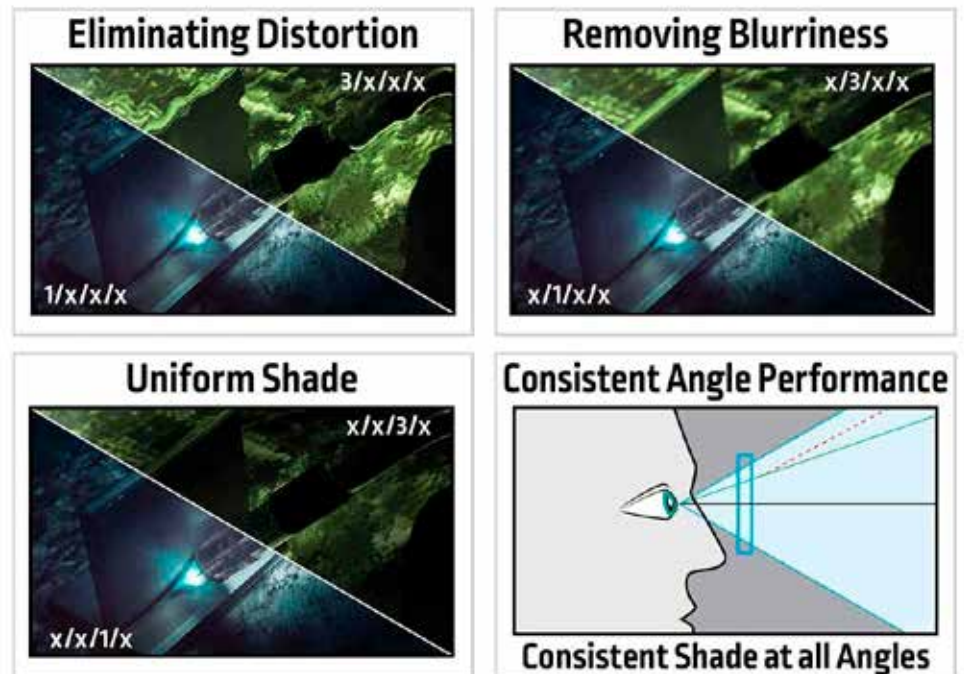
- Flame Retardant Cotton and water resistance with super soft seal.
- Good sealing performance ensuring that a micropositive pressure state is formed in face shield
- Easily replaceable via hook & loop seal.
- Two small drawstrings



Light Shade Technology



Perfect 1/1/1/1 Optical Clarity



EuropurePLUS™ 5500 LS

POWERED AIR PURIFYING RESPIRATOR TH3 Class

The EuropurePLUS™ 5500 LS Powered Air Purifying Respirator features a smart blower system, integrated grind shield & side windows and an **extra large auto-darkening lens** with our exclusive **light shade technology**.

Helmet weight: 793g

**WELDING,
CUTTING,
GRINDING**



What's Included

- **EuropurePLUS™ 5500 LS with Powered Air purifying Respirator**

- 5pcs front cover lens
- 2pcs inner cover lens
- 1 set side lens cover
- 2 pcs Pre-Filter
- 2 pcs P3 Filter
- Lithium Ion Battery
- 2 pcs Spark Screen
- Battery Charger
- Hose with Cover
- Padded Belt
- Headcovering
- Shoulder Straps
- Airflow Indicator



- Duffle Bag
- Bandana
- Sticker Planch

**MAXIMISING
FIELD OF
VIEW**



**EUROPURE PLUS™
5500 LS**
(including the blower)

W403676



**LIGHT SHADE
TECHNOLOGY**



Blower

**SMART
BLOWER
SYSTEM**

see page X

EN ISO 16321-1:2022,
EN ISO 16321-2:2021, EN 12941 TH3

CE Certified

(EU) 2016/425 (PPE) 2011/65/EU (ROHS)

Extra Large Auto-Darkening Lens

The **8 025 mm²** auto darkening lens provides a large field of view to increase versatility and operator control.

NEW
features



Shade Settings

Tailored protection for every task:

- Grind Mode: Fixed at shade level 3,
- Cut Mode: Adjustable from shade 5 to 8,
- Weld Mode: Adjustable from shade 9 to 13

Grind Mode

- Perfect for grinding and preparation work. Enjoy a clear, undarkened view without interruptions.

MAXIMISING FIELD OF VIEW

The integrated clear grind shield and shade 5 side windows increase field of view in both the open and closed positions to offer productivity and safety enhancements.



Sensitivity Control

- Fine-tune the sensor to match your welding method and working conditions for optimal performance.

Delay Function

- Prevents the lens from switching to light mode too soon—ideal when the workpiece remains hot and glowing.

New Functionalities

EuropurePLUS™ 5500 LS

Dark Mode

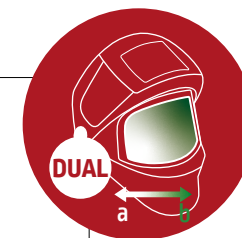
- Use the filter as a passive shade glass. No auto-darkening—just consistent, reliable protection.



Dual-Color Display

Choose your view:

- Whitish tone for a brighter, more natural look
- Greenish tone for traditional welding visibility

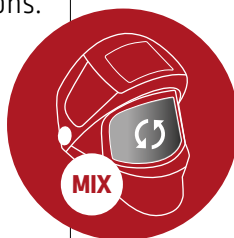


Mix Mode

Designed for tack welding and high-current applications. Reduces eye fatigue from sudden shade changes.

Three-phase transition:

- Delay from dark to intermediate shade
- Smooth gradient adjustment
- Delay from intermediate to light



Smart Mode

- Let your helmet do the thinking. The filter automatically adjusts the shade level in real-time based on welding current.



Lens switching speed



1/25,000 sec

Comfort



Viewing area

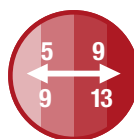


107 mm x 75 mm

Class



Variable shades



Arc sensors



Optical class



Low TIG amps rated



Grind mode / Shade control



DIN 3 / FLIP UP

EuropurePLUS™ 5500 LS

Applications	Optical Clarity Rating	Lens Switching Speed [sec]	Number of Arc Sensors	Variable Shade Range/Control	Optic Technology	Magnifying "Cheater" Capable Lens	Grind Mode Shade / Control	TIG Amp Rating	Light Sensitivity Control	Delay Control Dark to Light [sec]	Cartridge Size [mm]	Auto-Darkening Viewing Area [mm ²]
Welding, Cutting, Grinding	1/1/1	1/25,000	4+2	Digital; 5 to 13; DIN 16	Light Shade Technology	Yes	DIN 3/FLIP UP	≥ 2 A /DC ≥ 2 A /AC	Continuous	0,1-1,0 s fully adjustable	156 x 123 mm	8025

Advanced Headgear

- Adjustable headband
- Multi-axis headgear, and the rear is infinitely adjustable to meet the needs of different head circumferences (distance, tightness / looseness, top of head fit, rotation force and rotation range)
- Cushioned Headgear eliminates pressure points and evenly distributes face shield weight for all day comfort

EASY forward
and backward
slide
ADJUSTMENTS

**VERTICAL
POSITION
LOCK**



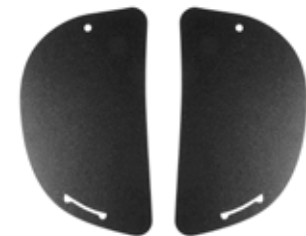
Comfortable Headcovering

- Flame Retardant Cotton and water resistance with super soft seal.
- Good sealing performance ensuring that a micropositive pressure state is formed in face shield
- Easily replaceable via hook & loop seal.
- Two small drawstrings



Side Window Covers

- Used to block all light from entering through the side windows.
- Lightweight & easy to install.



EuropurePLUS™ LE FACE SHIELD

POWERED AIR PURIFYING RESPIRATOR TH3 Class



Blower

The EuropurePLUS™ LE FACE SHIELD Powered Air Purifying Respirator features a smart blower system, integrated Professional **Face Shield - Dual Coating**. Air flow direction can be changed with built-in wind direction adjuster for optimum comfort.

Helmet weight: 120g

**GRINDING, BRAZING,
OXYFUEL CUTTING**



What's Included

- EuropurePLUS™ LE FACE SHIELD with Powered Air purifying Respirator
- 1 Pre-Filter
- 1 P3 Filter
- Lithium Ion Battery
- 1 Spark Screen
- Battery Charger
- Hose with Cover
- Padded Belt
- Headcovering
- Shoulder Straps
- Airflow Indicator
- Duffle Bag
- Face shield SHADE 5

**90%
THICKER**

than a
traditional
face shield

**AIR FLOW
DIRECTION
ADJUSTMENT**



**SMART
BLOWER SYSTEM**

see page 13

**EUROPURE PLUS™
LE FACE SHIELD**
(including the blower)

W403679

EN 166:2022 EN 12941:1998
+ A1:2003 + A2:2008

CE Certified
(EU) 2016/425 (PPE) 2011/65/EU (ROHS)

Face shield CLEAR

- High-resolution clear vision
- Anti-scratch lens
- Enhanced protection
- High density clear polycarbonate lens
- No distortion of the vision
- High light transmittance
- Good wear resistance



CLEAR LENS

WP403679-1

Shade number of **ultraviolet filter** with good color recognition : **3-1,2**

Optical class : **1**

High Density Impact Resistant Lens protects against high velocity impacts

Premium Polycarbonate Lens has excellent optical clarity for clear, undistorted vision

Resistance for medium energy impact: **B**

Shade 5 IR Lens provides infrared light protection for grinding, brazing or cutting applications

Face shield SHADE 5

- High-resolution
- Anti-scratch lens
- No distortion of the vision
- High light transmittance
- Good wear resistance



LENS SHADE 5

WP403679-2



Advanced Headgear

- Adjustable headband
- Multi-axis headgear, and the rear is infinitely adjustable to meet the needs of different head circumferences (distance, tightness / looseness, top of head fit, rotation force and rotation range)
- Cushioned Headgear eliminates pressure points and evenly distributes face shield weight for all day comfort

EASY forward
and backward
slide
ADJUSTMENTS

**VERTICAL
POSITION
LOCK**



EuropurePLUS™ **LE FACE SHIELD**



Comfortable Headcovering

- The fabric has good water resistance and flame retardancy, and good sealing performance, ensuring that a micro-positive pressure state is formed in face shield
- Flame Retardant Cotton and water resistance with super soft seal
- Easily replaceable via hook & loop seal

EuropurePLUS™ **CLEAR**

POWERED AIR PURIFYING RESPIRATOR **TH3 Class**



Blower

The **EuropurePLUS™ CLEAR** modern design answer to impact protection with **High-impact resistance**.

The EuropurePLUS™ CLEAR combines face coverage with wide field of view. Air flow direction can be changed with built-in wind direction adjuster for optimum comfort.

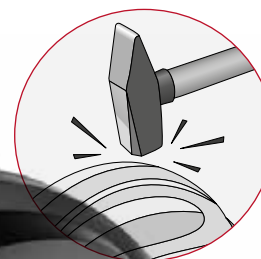
Helmet weight: 792g

**GRINDING, BRAZING,
OXYFUEL CUTTING**



What's Included

- **EuropurePLUS™ CLEAR with Powered Air purifying Respirator**
- 1 pc Pre-Filter
- 1 pc P3 Filter
- Lithium Ion Battery
- 1 pc Spark Screen
- Battery Charger
- Hose with Cover
- Padded Belt
- Headcovering
- Shoulder Straps
- Airflow Indicator
- Duffle Bag



**HIGH-IMPACT
RESISTANCE**
HEAD PROTECTION



**SMART
BLOWER SYSTEM**

see page X

**AIR FLOW DIRECTION
ADJUSTMENT**

**EUROPURE PLUS™
CLEAR**
(including the blower)

W403678

EN 397:2012+A1:2012 EN 166:2022
EN 12941:1998 + A1:2003 + A2:2008

CE Certified

(EU) 2016/425 (PPE) 2011/65/EU (ROHS)

Face shield CLEAR

- Clear Polycarbonate
- Anti-scratch lens
- High-resolution clear vision
- No distortion of the vision
- High light transmittance
- Enhanced protection
High density clear polycarbonate lens
- Good wear resistance



CLEAR LENS

WP403678-10

Lens shade 5

- Can be added to the transparent visor
- High-intensity visor
- Against UV/IR radiation



**SMALL LENS
SHADE 5
with pivot**

WP403678-16



**BIG LENS
SHADE 5**

WP403678-17

HEAD PROTECTION

- **High-impact resistance**
- **Compact shape**
- **Balanced center of gravity**

- Protection against **droplets and splashes** of liquids : **3**
- Protection against **molten metals and hot solids** : **9**
- Resistance to **medium energy impact** : **B**
- Resistance to **high speed particles** at extremes of temperature : **T**

- **Shock absorption** capacity up to 5 kN
- **Penetration** resistance
- **Flame** resistance
- **Chinstrap** resistance up to 25 daN
- Resistance to **penetration at extreme temperatures** (low and high): Resistance to the risks of penetration at extreme temperatures, whether very cold or extremely hot
- Resistance to **lateral deformation**
- Resistance to **molten metal splashes**



EuropurePLUS™ **CLEAR**

Advanced Headgear

EuropurePLUS™ CLEAR

- Adjustable headband
- Multi-axis headgear, and the rear is infinitely adjustable to meet the needs of different head circumferences (distance, tightness / looseness, top of head fit, rotation force and rotation range)
- Cushioned Headgear eliminates pressure points and evenly distributes face shield weight for all day comfort



EASY forward
and backward
slide
ADJUSTMENTS

**VERTICAL
POSITION
LOCK**



Comfortable Headcovering

- The fabric has good water resistance and flame retardancy, and good sealing performance, ensuring that a micro-positive pressure state is formed in face shield
- Flame Retardant Cotton and water resistance with super soft seal
- Easily replaceable via hook & loop seal

EuropurePLUS™ BLOWER

EuropurePLUS™ BLOWER



Superior Battery Life¹

Operators can work a full shift (or more) without interruption. The PAPR comes with a standard battery that outpaces the battery life of competing systems.

Additionally, Lincoln Electric offers an extended battery which has a run time of up to 16 hours. This extra battery capacity provides flexibility when working overtime and is a safeguard when the system is not recharged overnight.

¹Results based on low flow setting and 50% blocked filter.

see Optional Accessories on page 19

**Lincoln Electric
Extended Battery**

16 hrs

**Lincoln Electric
Standard Battery**

9 hrs

Competitor

6 hrs

BLOWER Specification

EuropurePLUS™ BLOWER

Air flow rate	Low speed: 170+ lpm[6+cfm]
	High speed: 210+ lpm[7.4+cfm]
Powered by	Battery type: Rechargeable Li-ion Battery <i>[More effective]</i>
Battery	Battery duration: 9 hours <i>[Standard battery, 170+lpm]</i> 5-6 hours <i>[Standard battery, 210+lpm]</i>
	Battery charge time: 1 hour <i>[Standard battery]</i>
	Battery life: 550 charges
Filter Operating Temp.	Filter efficiency: ≥99.97%
	Offering particulate protection from dust and welding fume hazards. For use with all welding applications.
	Visible, Audible and Vibrate alarms to ensure safety.
	-5 °C ~ +55 °C [23 °F ~ 131 °F]
Storing Temp.	-10 °C ~ +55 °C [14 °F ~ 131 °F]
Operating Relative Humidity	< 90%
Storage Relative Humidity	< 85%
Head Covering	FR Flame Retardant
Weight	2.66 kg [mask + air flow system]
PAPR Certification	EN 12941 TH3 P R SL
Warranty - Blower Assembly	3 Years
Warranty - Helmet Auto Darkening Lens	2 Years – EUROPLUS CLEAR & EUROPLUS LE FACE SHIELD 3 Years – EUROPLUS 5500 LS

Multi-Component Filter System

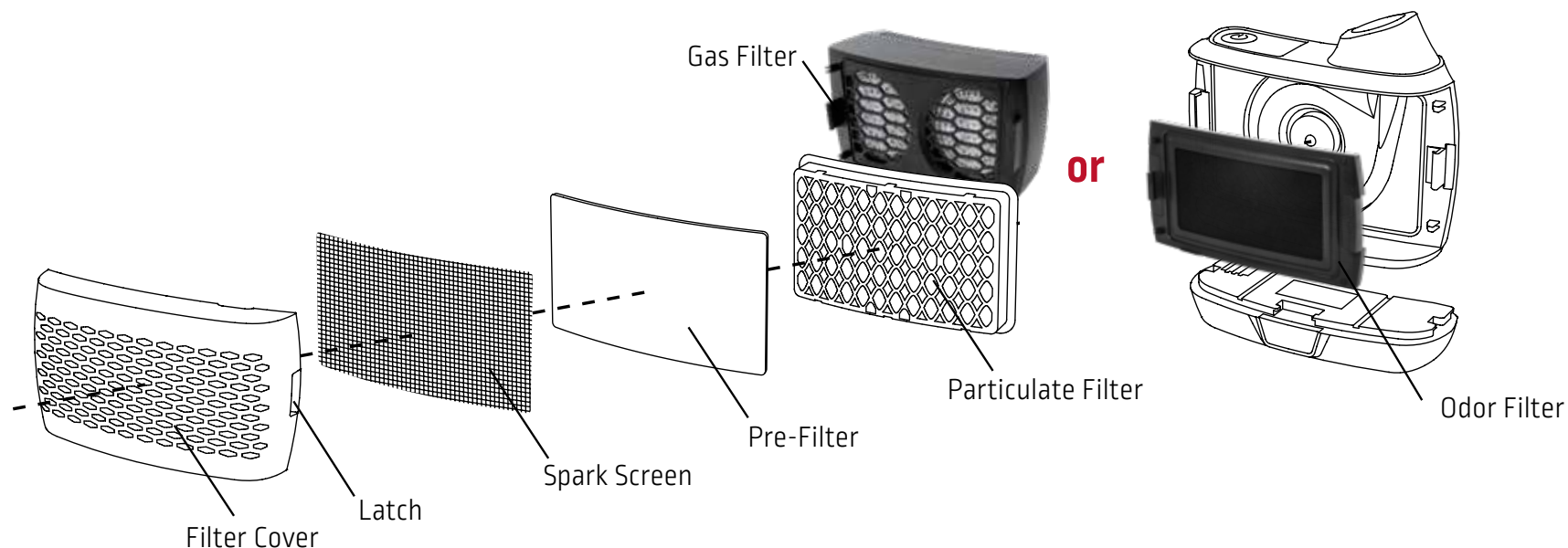
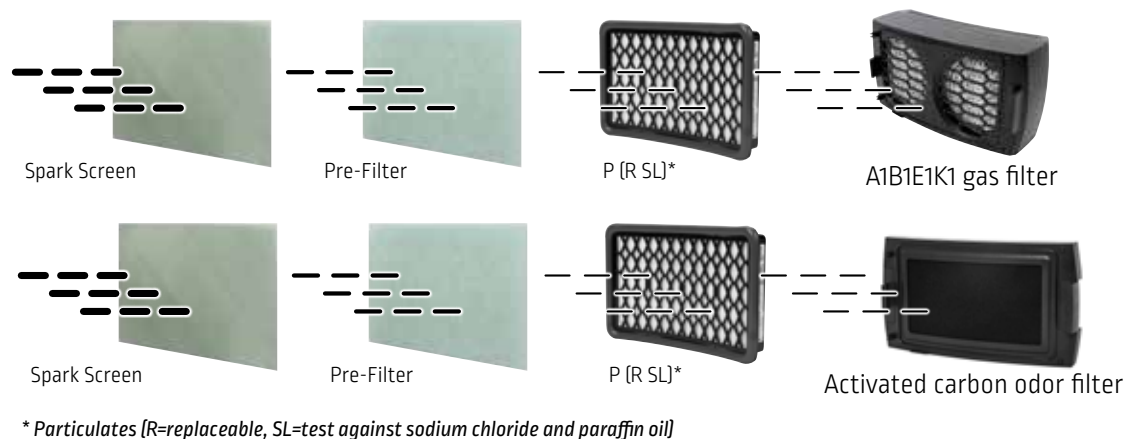
EuropurePLUS™ BLOWER

TDS Filter

Filter Combination :

The EuropurePLUS™ blower unit can only accommodate 2 filters. Please install all the filter components according to the image.

- P3 Particle filter + A1B1E1K1 Gas filter
- P3 Particle filter + Activated carbon odor filter



Filter specification

EuropurePLUS™ BLOWER

	Odor Filter	P3 Particle Filter	Gas Filter
Item	WP403676-36	WP403676-17	WP403676-30
Suitable PAPR	EuropurePLUS™		
Protection against	Eliminates odor when not using gas filter	Solid and liquid particles (including those containing oil), dusts, mists, and fumes from sanding, welding, grinding, cutting, drilling metal, mist droplets from spraying and organic vapors and gases	Organic and inorganic acidic ammonia gas
Weight	138g	105g	829g
Size	208 x 117 x 30 mm	175 x 112 x 35 mm	223 x 117 x 85 mm
Filter box type	Activated Carbon Odor filter	P3 Particle Filter	A1B1E1K1
Application operation	Assembly, facility maintenance, grinding, machine operation, welding, painting		
Application industry	Chemicals, mining, oil, natural gas		
Usage instructions	The odor filter must always be used with the Particle filter, pre-filter and spark screen. Do not use the odor filter alone.	P3 Particle filter permits a filtration efficiency of 99,997%	This gas filter must be always used together with EUROPURE PLUS 5500LS particle filter.
Warning	Read the instruction before use. The filter assembly must be installed properly as per instruction guide. Cannot be cleaned. Replace with new ones if damaged or dirty.		

Markings on the Equipment

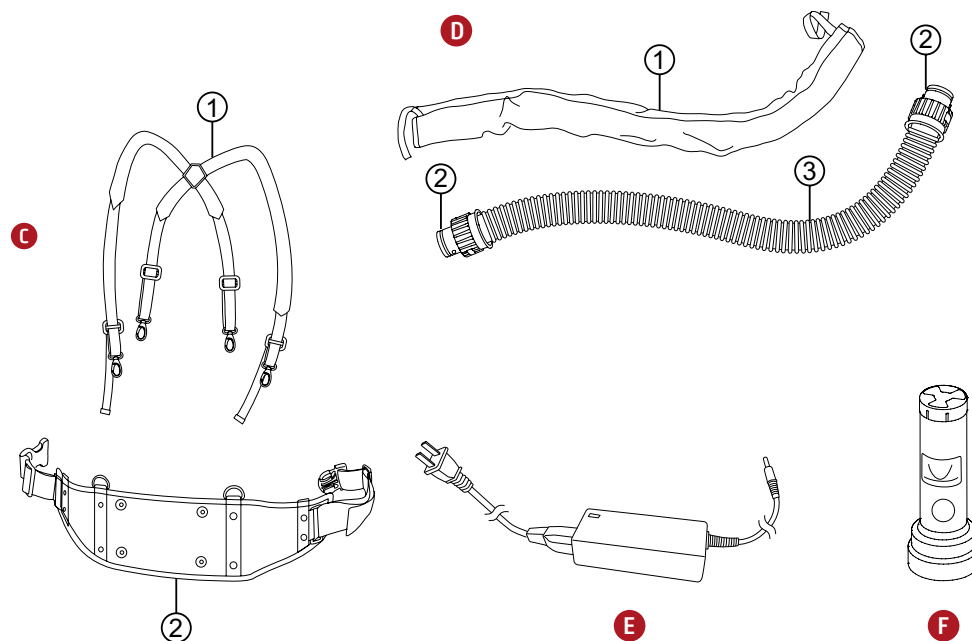
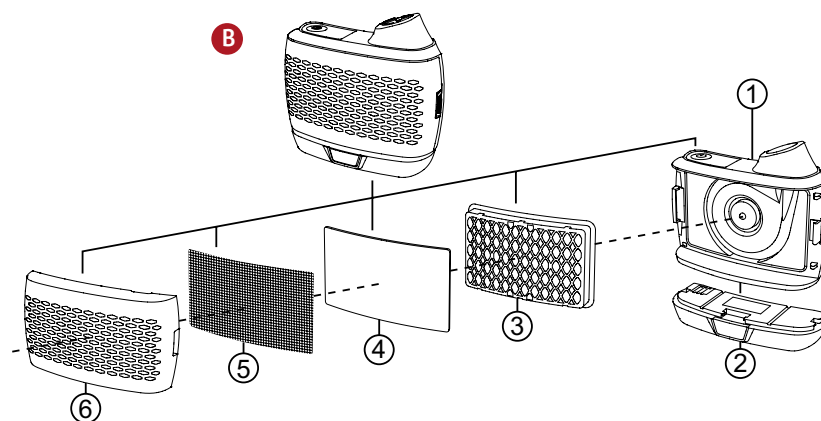
Marking	Odor filter (Carbon)	P (R SL)	A1B1E1K1
Part No.	WP403676-36	WP403676-17 (individually) or WP403676-32 (pack of 5 pcs)	WP403676-30
Color Code		White	Brown / Grey / Yellow / Green
Protection Against	Odor	Particulates (R=replaceable, SL=test against sodium chloride and paraffin oil)	Organic gases / Inorganic gases / Sulfur dioxide, acidic gases / Ammonia and organic ammonia derivatives
Certification		CE2849 The particle filter are marked according to EN12941:1998. UKCA0194	CE2849 The gas filter are marked according to EN12941:1998. UKCA0194

EuropurePLUS™ BLOWER

EuropurePLUS™ BLOWER

To order			
	Description	Qty/pk	Reference
B Blower			
①	Body	1	WP403676-16
②	Fast-charging standard battery	1	WP403676-1
③	Particle filter (P3 filter)*	1	WP403676-17
	Particle filter (P3 filter)*	5	WP403676-32
④	Pre-filter	5	WP403676-18
⑤	Spark screen	10	WP403676-19
⑥	Filter cover	1	WP403676-20
	Gas filter	1	WP403676-21
	Gas filter A1B1E1K1*	1	WP403676-30
	Fast charging extended battery*	1	WP403676-2
	Odor filter*	1	WP403676-36
	Multi operator battery charger*	1	WP403676-39
C Wears			
①	Shoulder strap	1	WP403676-22
②	Belt cushion (including screws & washers)	1	WP403676-23
	Blower backpack*	1	WP403676-31
	Adjustable leather belt assembly*	1	WP403676-29
D Hose			
①	Hose cover	1	WP403676-24
②	O-ring	2	WP403676-25
③	Hose (including O-ring)	1	WP403676-26
	Quick connection hose (EuropurePLUS™ CLEAR)	1	WP403678-13
	Quick-connection hose extension*	1	WP403676-38
E Battery Charger			
	Fast-charging battery charger	1	WP403676-3
F Airflow Indicator			
	Airflow indicator EuropurePLUS™ 5500 LS + faceshield	1	WP403676-27
	Airflow indicator EuropurePLUS™ CLEAR	1	WP403678-14
Others			
	Duffle bag	1	WP403676-28

* see Optional Accessories section

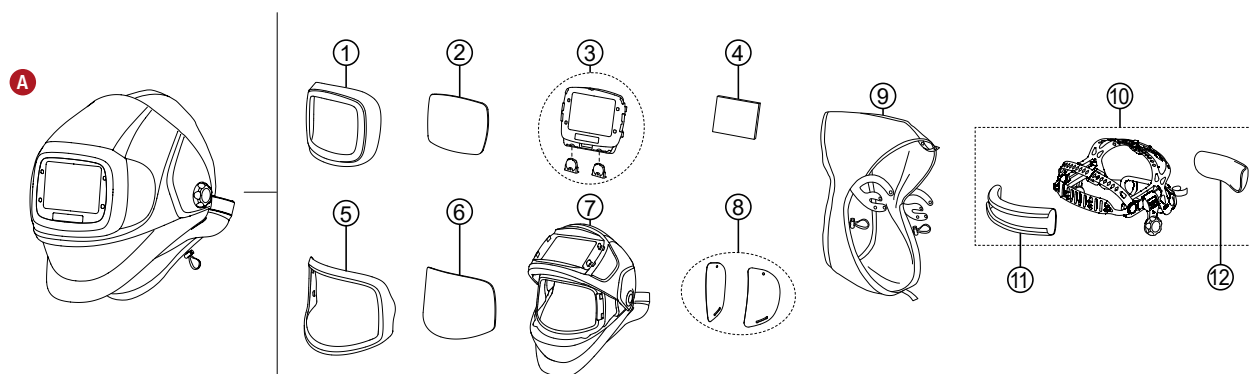


Complete Systems and Replacements Parts

EuropurePLUS™

EuropurePLUS™ 5500 LS

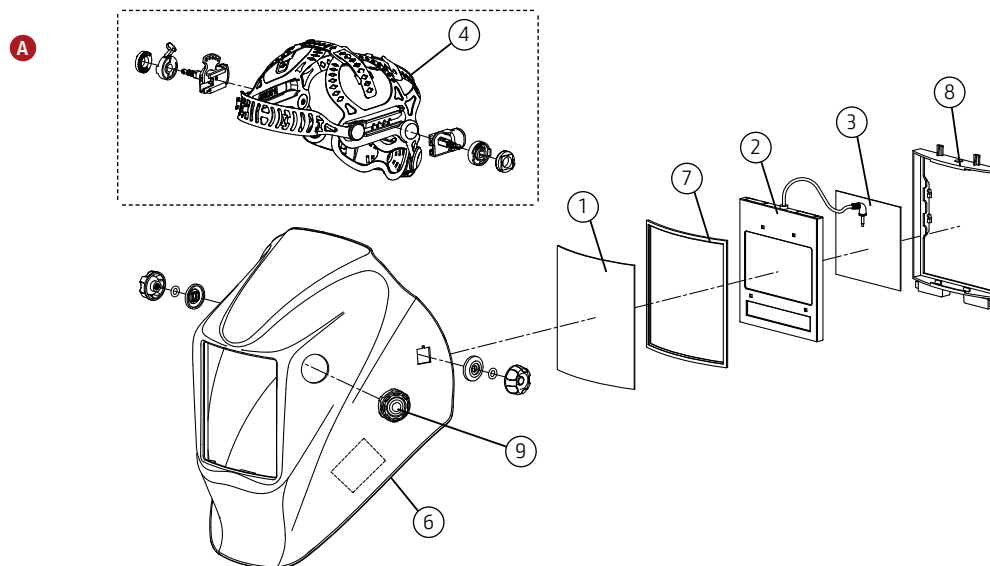
To order		
Description	Qty/pk	Reference
A Helmet with Air Duct Assembly	1	WP403676-35
① Front lens holder	1	WP403676-4
② Outside cover lens (160.36 x 107.3 mm)	5	WP403676-5
③ ADF cardtrigde	1	WP403676-6
④ Inside cover lens (107 x 80 mm)	5	WP403676-7
Inside cover lens (112.2 x 80 mm, for new ADF)	5	WP403676-41
⑤ Grind lens holder	1	WP403676-8
⑥ Grind lens (anti-fog, 223 x 129.8 mm)	5	WP403676-9
⑦ Helmet shell with air duct	1	WP403676-10
⑧ Side lens cover	2	WP403676-11
⑨ Face seal	1	WP403676-12
⑩ Headgear (Including sweatband & soft pad)	1	WP403676-13
⑪ Sweatband	2	WP403676-14
⑫ Soft pad	2	WP403676-15
Velcro	1	WP403676-40
Spring	1	WP403676-37



EuropurePLUS™ WAVE 3.0 LS

To order		
Description	Qty/pk	Reference
A Helmet	1	XXX
① Outside Cover lens (133.0 x 114.0 x 1.0 mm)	5	KP2898-1
② ADF cartridge	1	KPW4039-2
③ Inside Cover Lens (98.5x66.5x1.0 mm)	5	KP2931-1
④ Headgear Assembly (including sweatband)	1	KPW4039-1
⑤ Sweatband*	2	KP2930-1
⑥ Replacement Shell BLACK (VH11)	1	KPW4039-3
⑦ Outside clear lens seal	1	S27978-32
⑧ ADF holder	1	S27978-153
⑨ Grind button assembly	1	KP4562-1
⑩ CR2450 replacement battery*	1	KP4491-1

* no illustrations

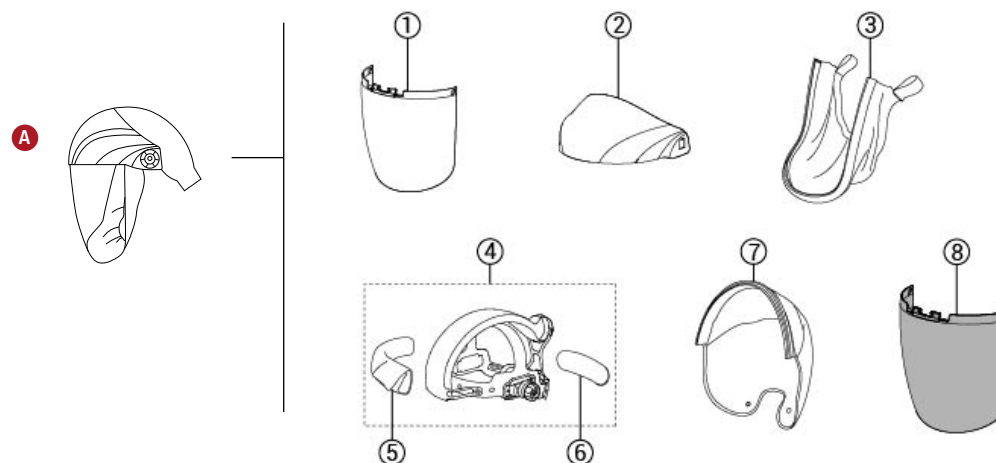


Complete Systems and Replacements Parts

EuropurePLUS™

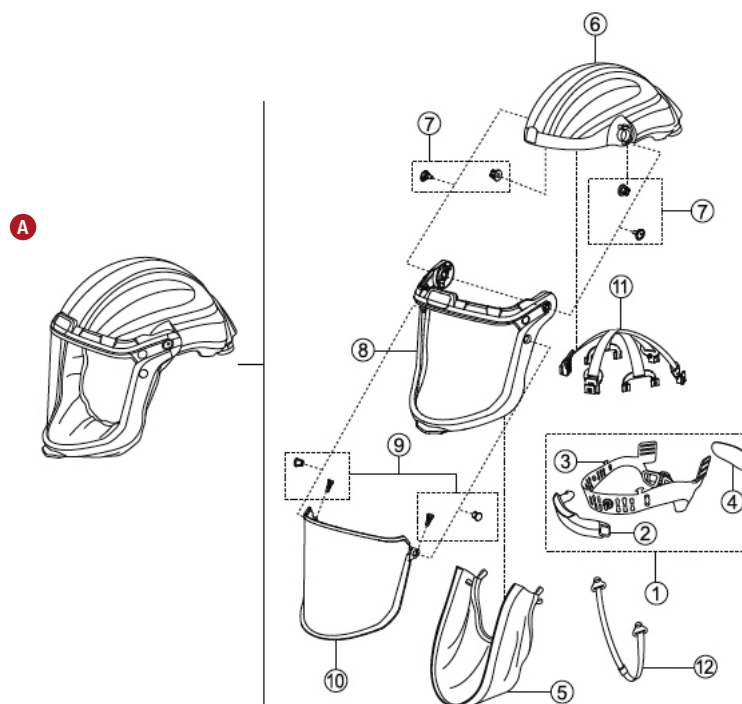
EuropurePLUS™ LE FACESHIELD

To order			
	Description	Qty/pk	Reference
A	Helmet with Air Duct Assembly	1	WP403679-15
①	LE clear lens	1	WP403679-1
②	LE shell	1	WP403679-3
③	LE sleeve	1	WP403679-4
④	LE Headgear	1	WP403679-5
⑤	Sweatband	1	WP403679-6
⑥	Soft pad	2	WP403679-7
⑦	LE Extended hood	3	WP403679-8
⑧	LE lens shade 5	4	WP403679-2



EuropurePLUS™ CLEAR

To order			
	Description	Qty/pk	Reference
A	Helmet with Air Duct Assembly	1	WP403678-15
①	Headgear	1	WP403678-1
②	Sweatband	1	WP403678-2
③	Head suspension	1	WP403678-3
④	Soft pad	1	WP403678-4
⑤	Face seal	1	WP403678-5
⑥	Headtop	1	WP403678-6
⑦	Headtop buttons	1	WP403678-7
⑧	Visor frame assembly	1	WP403678-8
⑨	Visor frame buttons	1	WP403678-9
⑩	Protective visor	1	WP403678-10
⑪	Ribbon	1	WP403678-11
⑫	Chin strap	1	WP403678-12
	Small lens shade 5	1	WP403678-16
	Big lens shade 5	1	WP403678-17



EuropurePLUS™ OPTIONAL ACCESSORIES

EuropurePLUS™



FAST-CHARGING EXTENDED BATTERY

WP403676-2

Fast-charging Extended battery

Features:

- ◆ Battery type : Rechargeable Li-ion Battery
- ◆ Battery duration : 15 hours (Low speed : 170+ lpm)
9 hours (High speed : 210+ lpm)
- ◆ Battery charge time : 2 hours
- ◆ Battery life : 550 charges

Lincoln Electric
Extended Battery

16 hrs

Lincoln Electric
Standard Battery

9 hrs

¹Results based on low flow setting and 50% blocked filter.

Multi-Operator PAPR Battery Charger

- ◆ Charge 4 Batteries LITHIUM ION at one time
- ◆ Charges in 3 hours
- ◆ Compatible with Standard and extended Battery
- ◆ BATTERY CHARGER INDICATOR: SWITCHING LED (RED - CHARGING, GREEN - CHARGING COMPLETE)
- ◆ Norm : CE 62368



MULTI-OPERATOR PAPR BATTERY CHARGER

WP403676-39



FILTER TYPE:
A1B1E1K1

WP403676-30

P3 PARTICLE
FILTER

WP403676-17

Pack of 5 pcs.
WP403676-32



ODOR FILTER

WP403676-36



QUICK-CONNECTION
HOSE EXTENSION

WP403676-38

EuropurePLUS™ **OPTIONAL ACCESSORIES**

EuropurePLUS™

Adjustable Leather Belt Assembly

Adjustable leather belt assembly secures EUROPURE PLUS 5500 LS air purifying blower to operators waist.

Features:

- ◆ Cushioned backpad for enhanced comfort
- ◆ Leather belt offers excellent durability against heat, spatter, sparks and more
- ◆ Slide adjustable fit allows operator to adjust tightness



**PAPR - ADJUSTABLE
LEATHER BELT ASSEMBLY**

WP403676-29

Backpack

Replaces belt and shoulder straps to improve weight distribution and comfort.



BACKPACK

WP403676-31

COMPILE YOUR SET





EuropurePLUSTM
5500 LS



CUSTOMER ASSISTANCE POLICY

The business of The Lincoln Electric Company® is manufacturing and selling high quality welding equipment, consumables, and cutting equipment. Our challenge is to meet the needs of our customers and to exceed their expectations. On occasion, purchasers may ask Lincoln Electric for information or advice about their use of our products. Our employees respond to enquiries to the best of their ability based on information provided to them by the customers and the knowledge they may have concerning the application. Our employees, however, are not in a position to verify the information provided or to evaluate the engineering requirements for the particular weldment. Accordingly, Lincoln Electric does not warrant or guarantee or assume any liability with respect to such information or advice. Moreover, the provision of such information or advice does not create, expand, or alter any warranty on our products. Any express or implied warranty that might arise from the information or advice, including any implied warranty of merchantability or any warranty of fitness for any customers' particular purpose is specifically disclaimed.

Lincoln Electric is a responsive manufacturer, but the selection and use of specific products sold by Lincoln Electric is solely within the control of, and remains the sole responsibility of the customer. Many variables beyond the control of Lincoln Electric affect the results obtained in applying these types of fabrication methods and service requirements.

Subject to Change – This information is accurate to the best of our knowledge at the time of printing. Please refer to www.lincolnelectric.eu for any updated information.

www.lincolnelectric.eu

