

FANUC 100iD DRESSOUT KIT STEP 1: INSTALL BRACKETS

RECOMMEND INSTALLING ITEM 11 PRIOR TO WIRE FEEDER

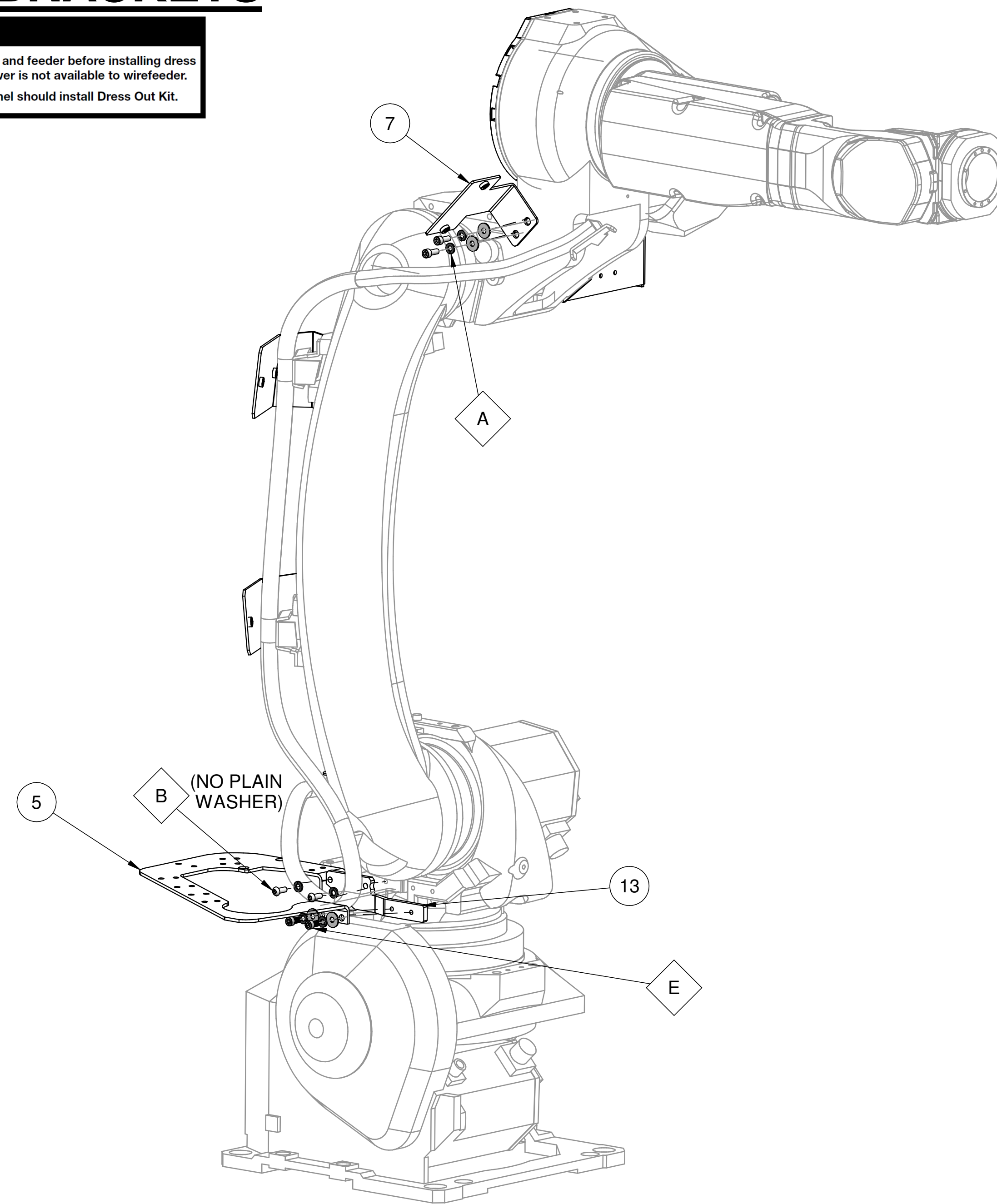
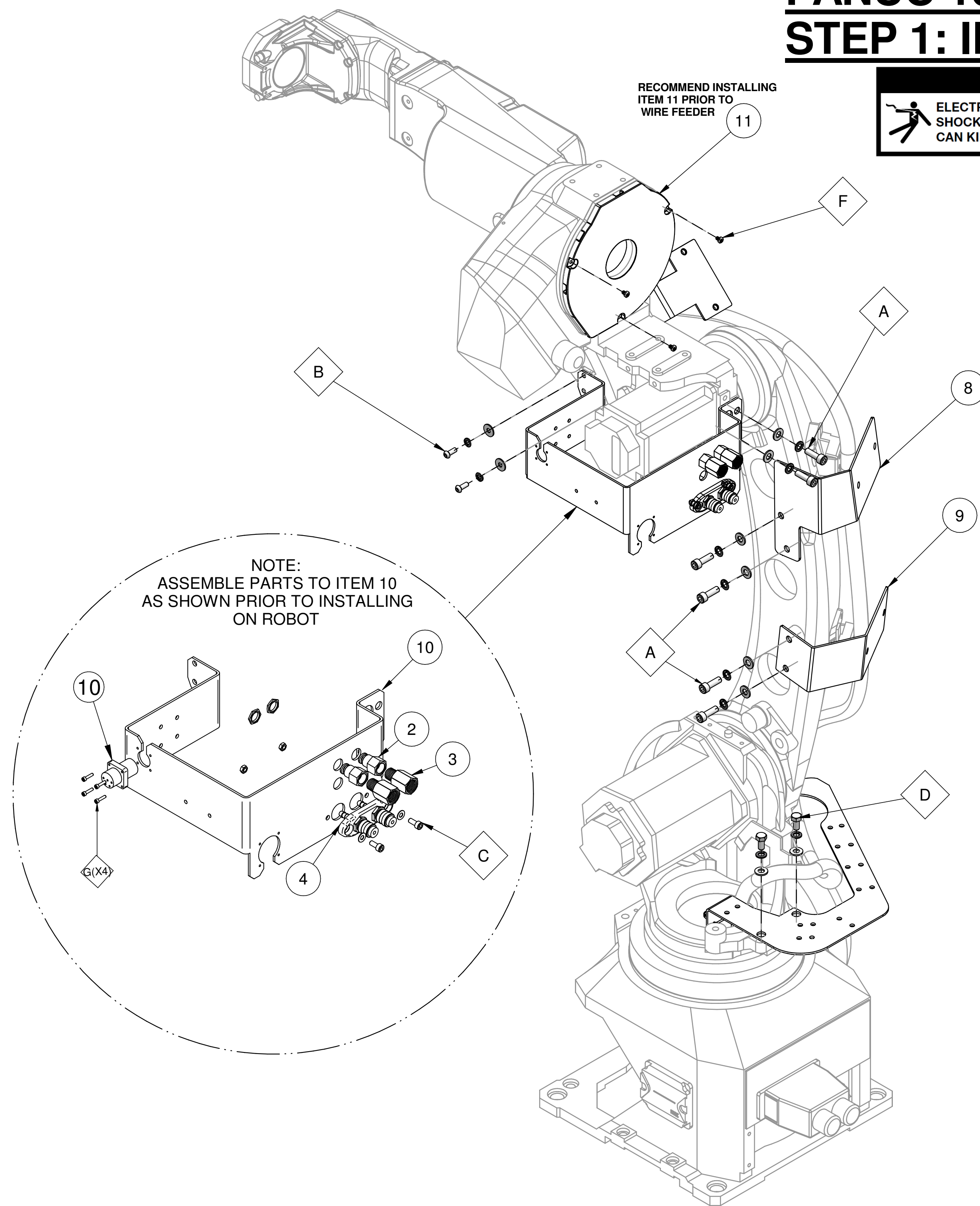
WARNING



ELECTRIC SHOCK CAN KILL



Turn off power to arm and feeder before installing dress out kit. Verify that power is not available to wirefeeder. Only qualified personnel should install Dress Out Kit.



THE LINCOLN ELECTRIC COMPANY

World's Leader in Welding and Cutting Products
Sales and Service through Subsidiaries and Distributors Worldwide
Cleveland, Ohio 44117-1199 U.S.A.

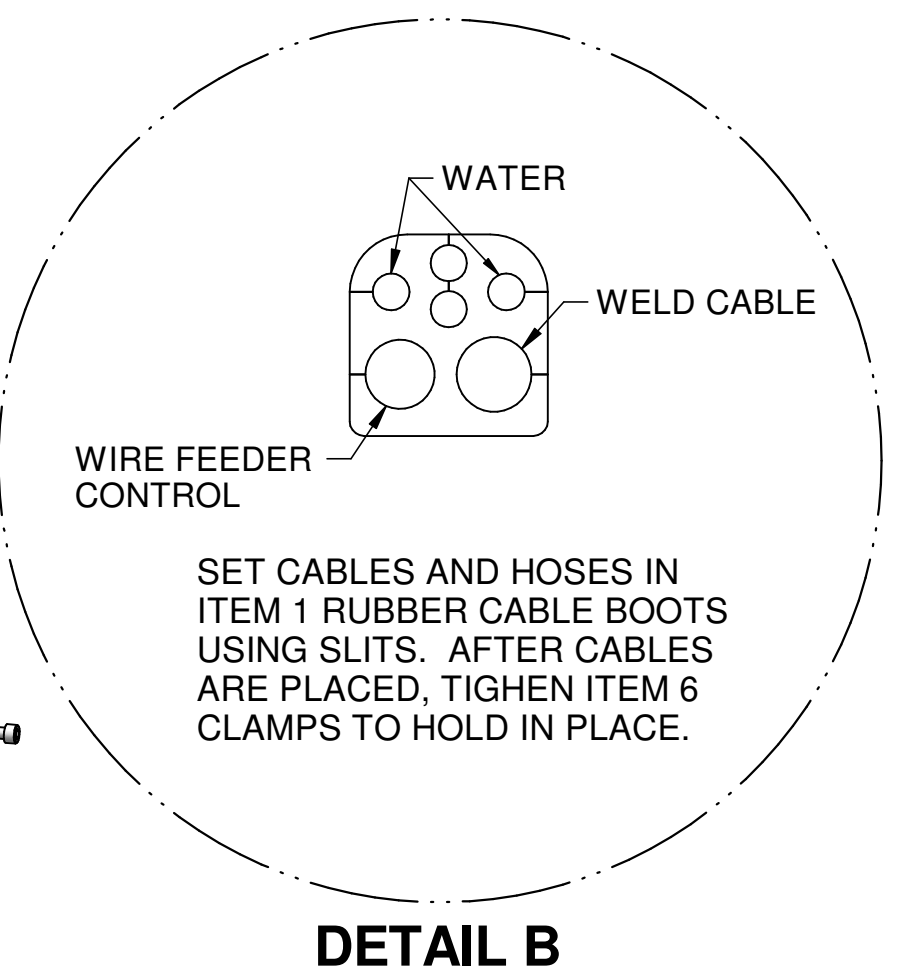
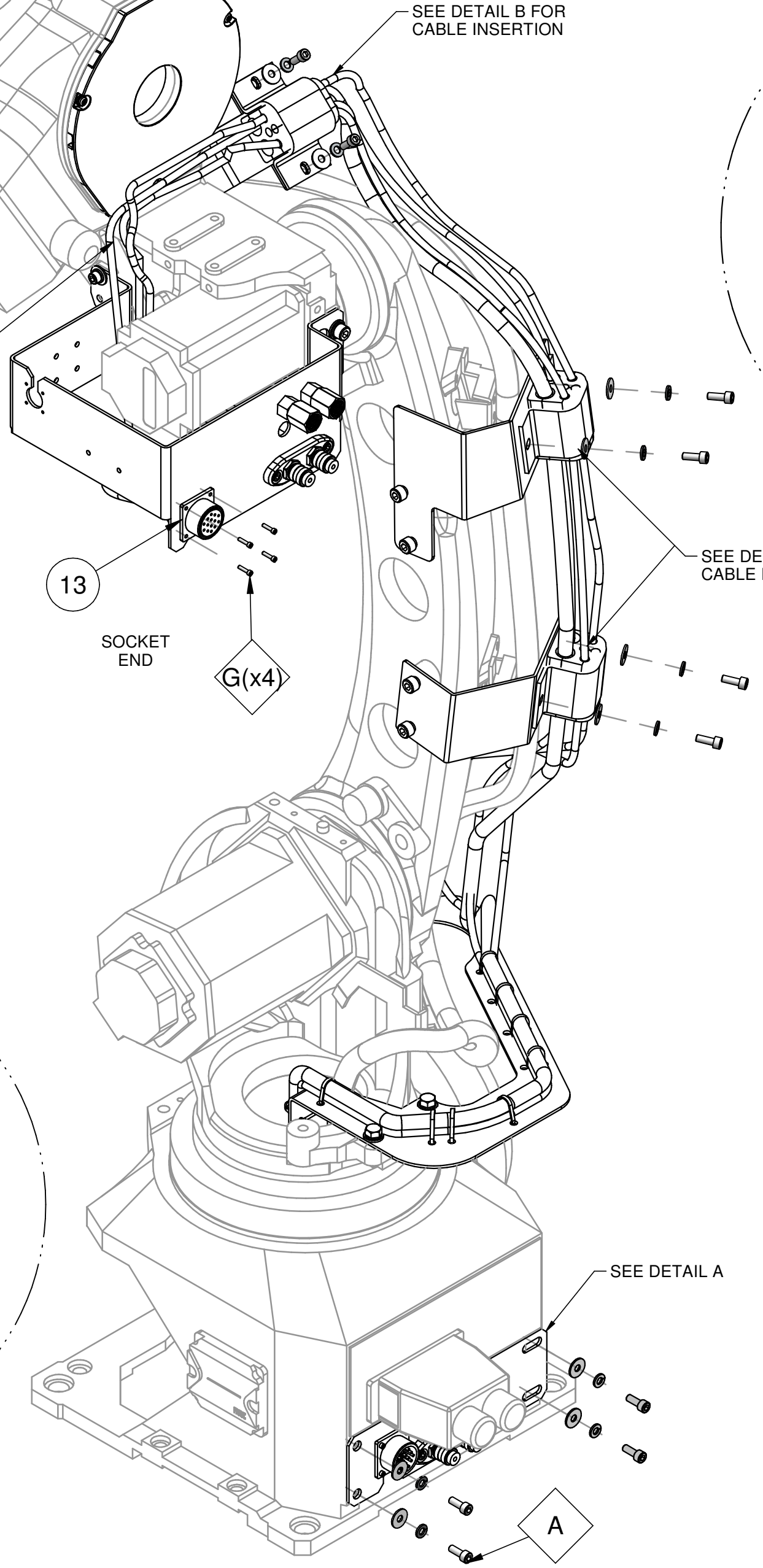
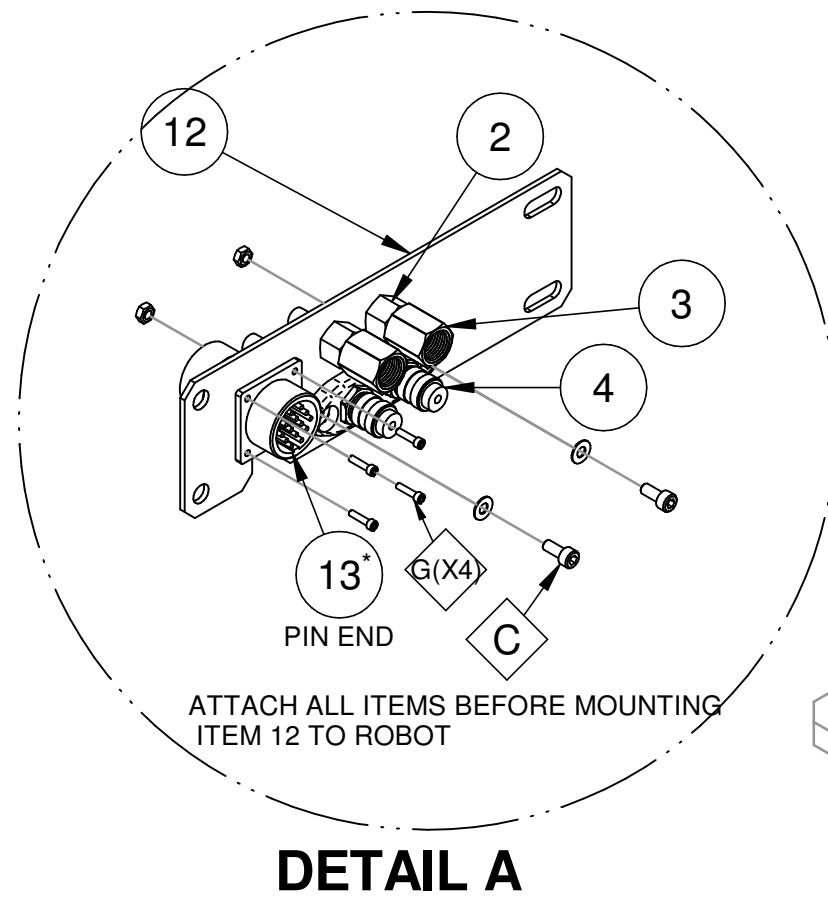
B

G9461PRINT

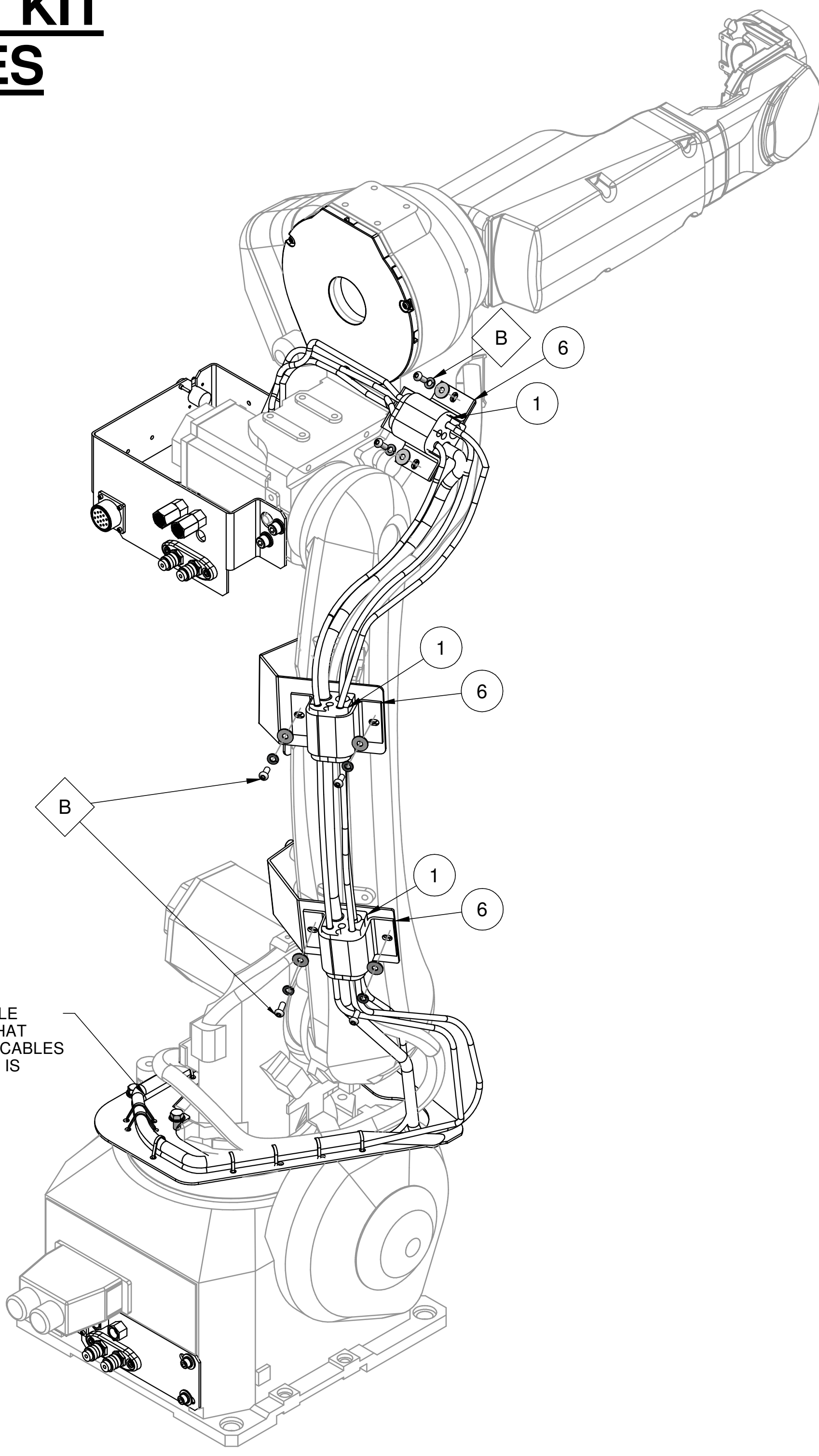
PROPRIETARY & CONFIDENTIAL - THIS DOCUMENT CONTAINS PROPRIETARY INFORMATION OWNED BY LINCOLN GLOBAL, INC. AND MAY NOT BE DUPLICATED, COMMUNICATED TO OTHER PARTIES OR USED FOR ANY PURPOSE WITHOUT THE EXPRESS WRITTEN PERMISSION OF LINCOLN GLOBAL, INC.		PAGE 1 OF 2	
MANUFACTURING TOLERANCE PER ASME Y14.5M UNLESS OTHERWISE SPECIFIED TOLERANCE ON 3 PLACE DECIMALS IS ± .02 IN. (± 0.5 mm) ON ALL ANGLES IS ± 2 OF A DEGREE MATERIAL TOLERANCE 1" TO AGREE WITH PUBLISHED STANDARDS	CONTROL: CLEVELAND	SCALE: 1:1 IF PRINTED @ A1 SIZE UNITS: INCH	EQUIPMENT TYPE: DRESS OUT KITS
DO NOT SCALE THIS DRAWING	ENGINEER: ACM	APPROVED: BS	SUBJECT: INSTALLATION INSTRUCTIONS (iD)
			DOCUMENT NUMBER: G9461
			DOCUMENT REVISION: B

FANUC 100iD DRESSOUT KIT STEP 2: ROUTE CABLES

BEGIN INSTALLING CABLES FROM TOP OF ROBOT. ROUTE CABLES AGAINST J3 CASTING AS SHOWN PRIOR TO INSTALLING WIRE FEEDER.



USE CABLE TIES TO SECURE CABLE BUNDLE TO BRACKET. ENSURE THAT THERE IS ENOUGH SLACK IN THE CABLES SO THAT ROBOT ARM MOVEMENT IS NOT RESTRICTED.



THE LINCOLN ELECTRIC COMPANY
 World's Leader in Welding and Cutting Products
 Sales and Service through Subsidiaries and Distributors Worldwide
 Cleveland, Ohio 44117-1199 U.S.A.

G9461PRINT

* SOLD SEPARATELY

PROPRIETARY & CONFIDENTIAL - THIS DOCUMENT CONTAINS PROPRIETARY INFORMATION OWNED BY LINCOLN GLOBAL, INC. AND MAY NOT BE DUPLICATED, COMMUNICATED TO OTHER PARTIES OR USED FOR ANY PURPOSE WITHOUT THE EXPRESS WRITTEN PERMISSION OF LINCOLN GLOBAL, INC.		SCALE: 1:1		EQUIPMENT TYPE: DRESS OUT KITS		PAGE 2 OF 2	
UNLESS OTHERWISE SPECIFIED TOLERANCE ON 2 PLACE DECIMALS IS ± .02 IN. (± 0.5 mm)		CONTROL: CLEVELAND	SCALE: 1:1	SUBJECT: INSTALLATION INSTRUCTIONS (iD)		DOCUMENT NUMBER: G9461	DOCUMENT REVISION: B
ON 3 PLACE DECIMALS IS ± .002 IN. (± 0.05 mm)		DRAWN BY: monell	IF PRINTED @ A1 SIZE	MATERIAL TOLERANCE: 1" TO AGREE WITH PUBLISHED STANDARDS		PROJECT NUMBER: CRM55597	REFERENCE: -
ON ALL ANGLES IS ± 2 OF A DEGREE		ENGINEER: ACM	UNITS: INCH	APPROVAL DATE: 1-07-2019		INSIGHT	
DO NOT SCALE THIS DRAWING		APPROVED: BS					