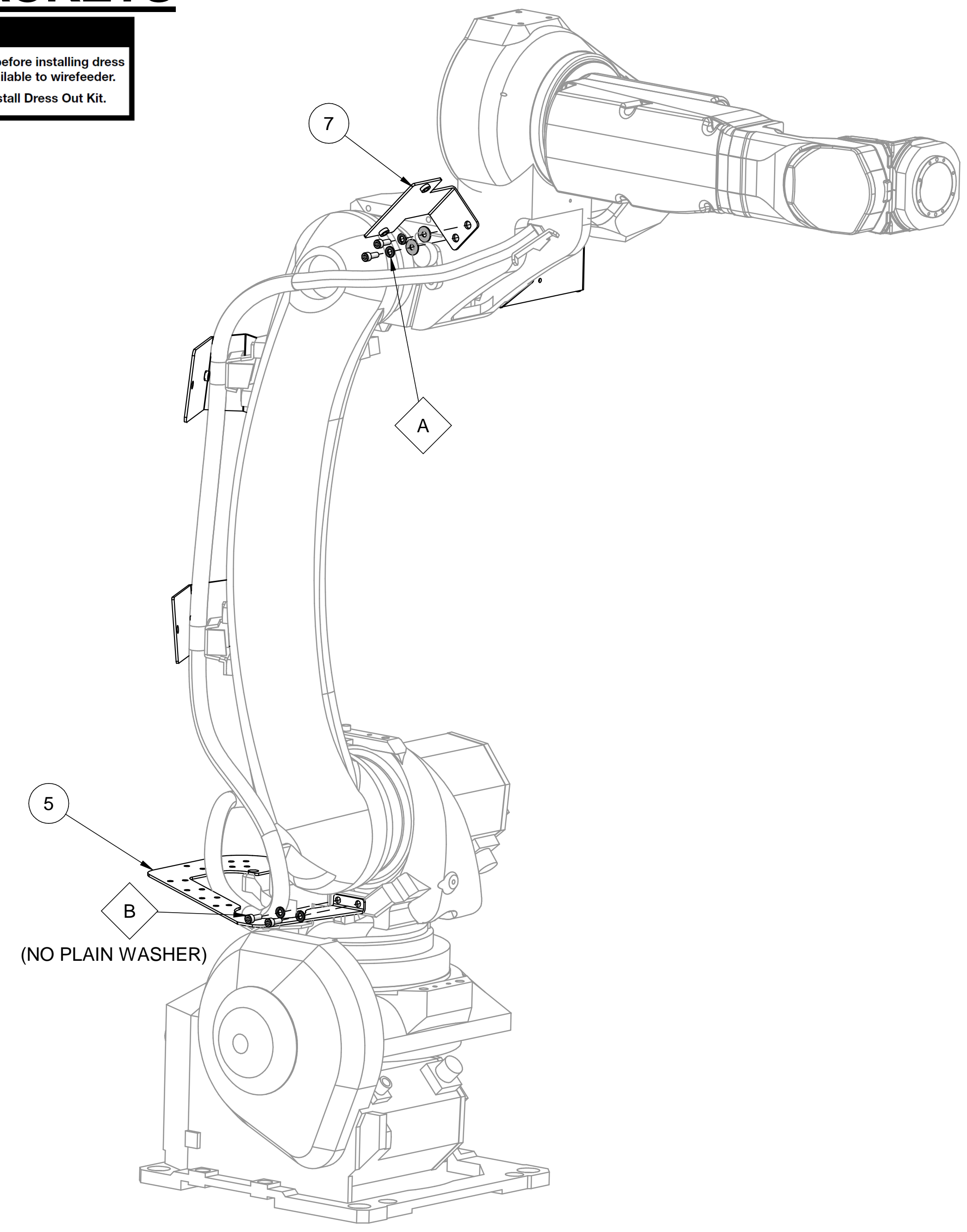
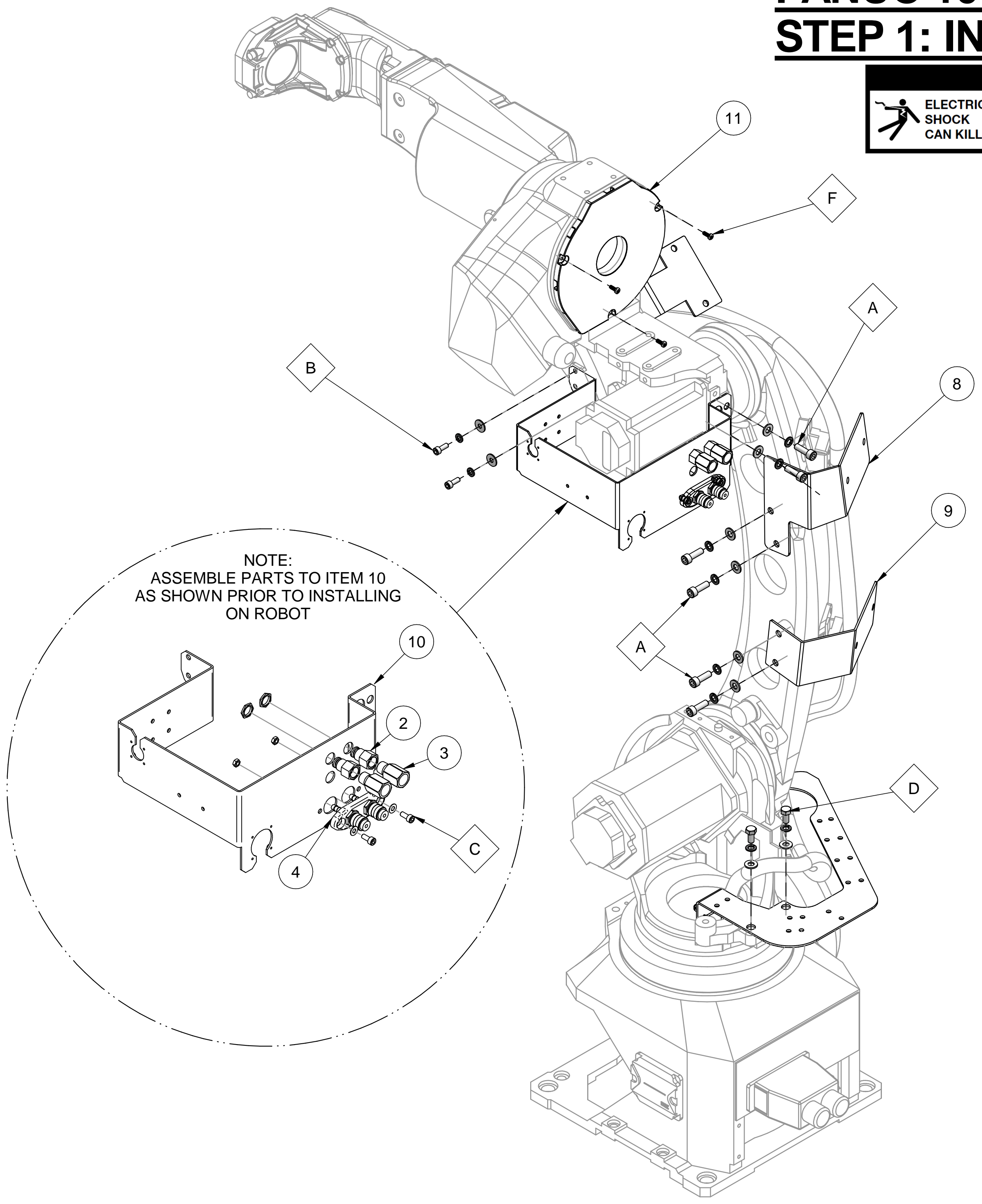


FANUC 100iD DRESSOUT KIT STEP 1: INSTALL BRACKETS

WARNING

ELECTRIC SHOCK CAN KILL

Turn off power to arm and feeder before installing dress out kit. Verify that power is not available to wirefeeder. Only qualified personnel should install Dress Out Kit.



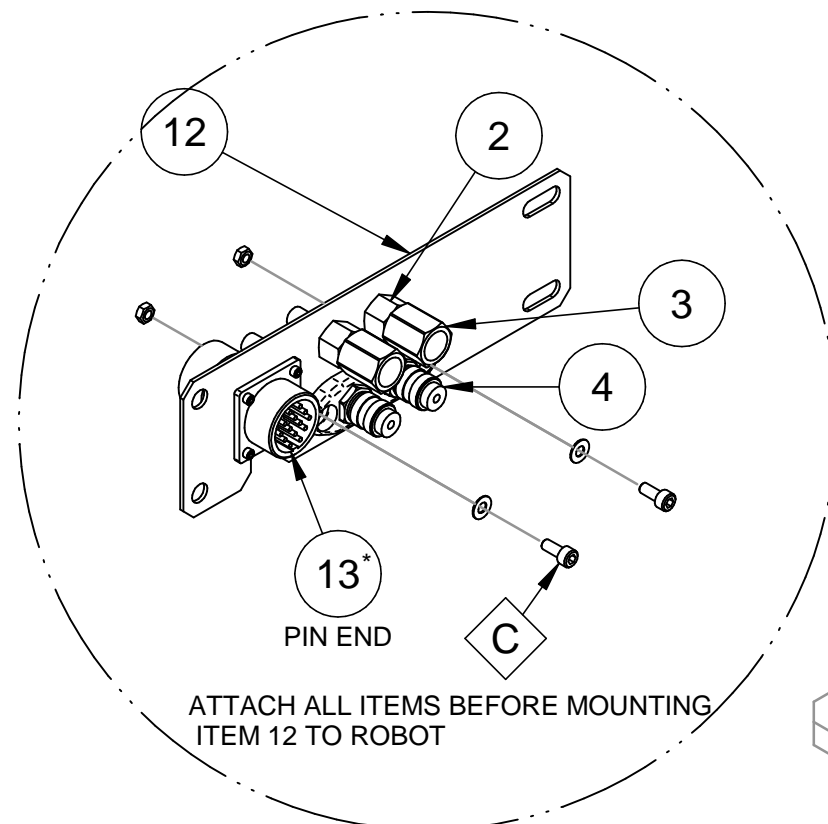
THE LINCOLN ELECTRIC COMPANY
 World's Leader in Welding and Cutting Products
 Sales and Service through Subsidiaries and Distributors Worldwide
 Cleveland, Ohio 44117-1199 U.S.A.

A.02
G9461PRINT

PROPRIETARY & CONFIDENTIAL - THIS DOCUMENT CONTAINS PROPRIETARY INFORMATION OWNED BY LINCOLN GLOBAL, INC. AND MAY NOT BE DUPLICATED, COMMUNICATED TO OTHER PARTIES OR USED FOR ANY PURPOSE WITHOUT THE EXPRESS WRITTEN PERMISSION OF LINCOLN GLOBAL, INC.		PAGE 1 OF 2	
MANUFACTURING TOLERANCE PER ASME UNLESS OTHERWISE SPECIFIED TOLERANCE ON 3 PLACE DECIMALS IS ± .002 in. (± 0.05 mm) ON ALL ANGLES IS ± 2 OF A DEGREE MATERIAL TOLERANCE (1" TO 48") WITH PUBLISHED STANDARDS	CONTROL: CLEVELAND DRAWN BY: ACM ENGINEER: ACM APPROVED: -	SCALE: 1:1 IF PRINTED @ A1 SIZE UNITS: INCH	EQUIPMENT TYPE: DRESS OUT KITS SUBJECT: INSTALLATION INSTRUCTIONS (iD) MATERIAL DISPOSITION: NA APPROVAL DATE: 12/21/2012 PROJECT NUMBER: CRM # REFERENCE: -
DO NOT SCALE THIS DRAWING		DOCUMENT NUMBER: G9461 DOCUMENT REVISION: A.02 Insight	

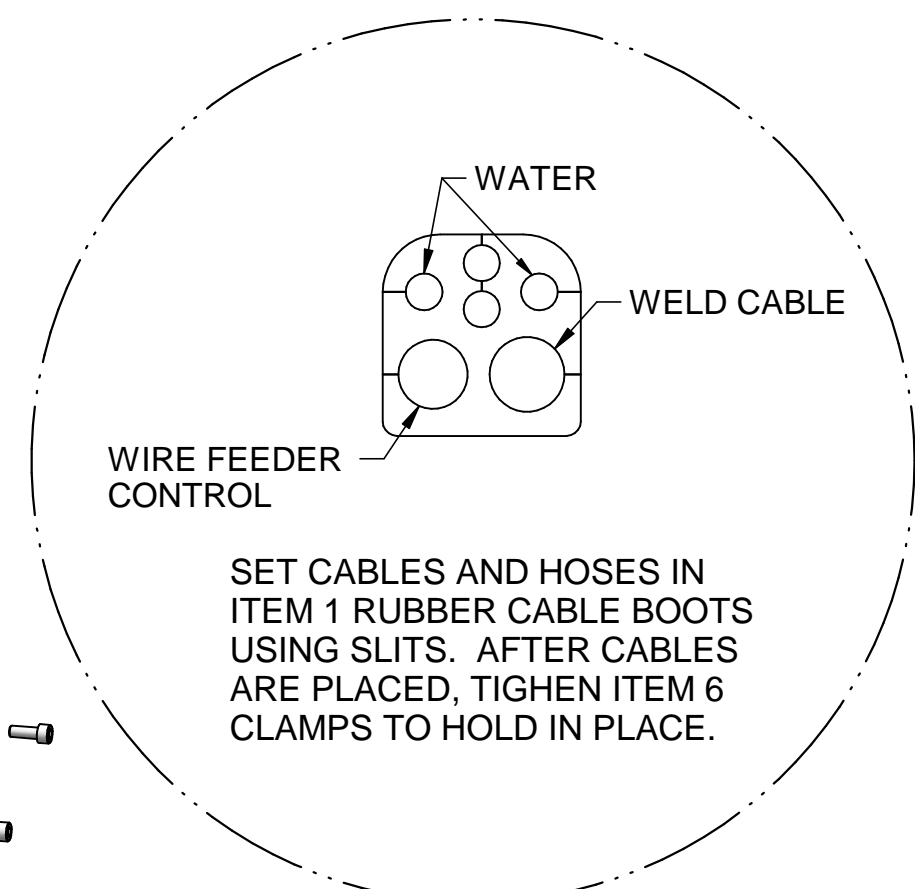
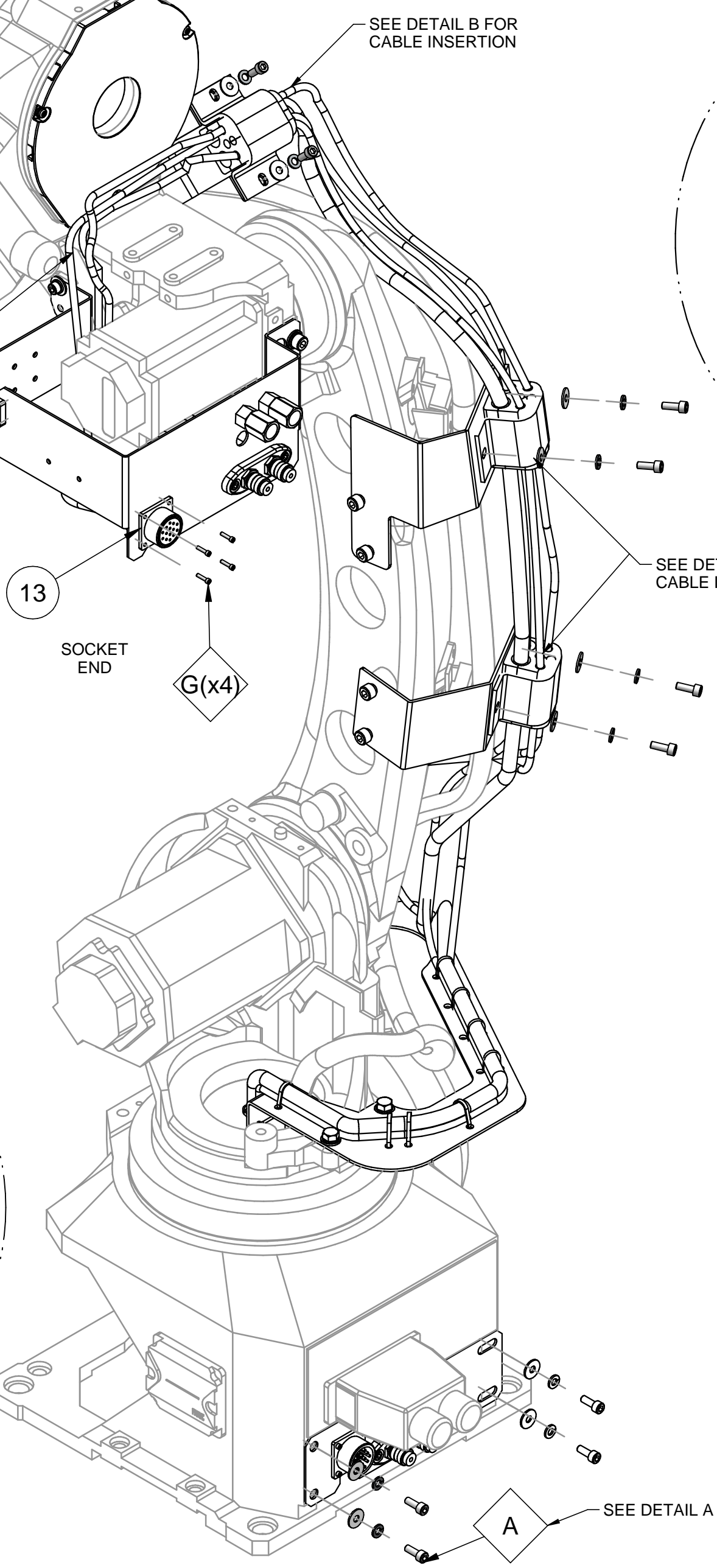
FANUC 100iD DRESSOUT KIT STEP 2: ROUTE CABLES

BEGIN INSTALLING CABLES FROM TOP OF ROBOT. ROUTE CABLES AGAINST J3 CASTING AS SHOWN PRIOR TO INSTALLING WIRE FEEDER.



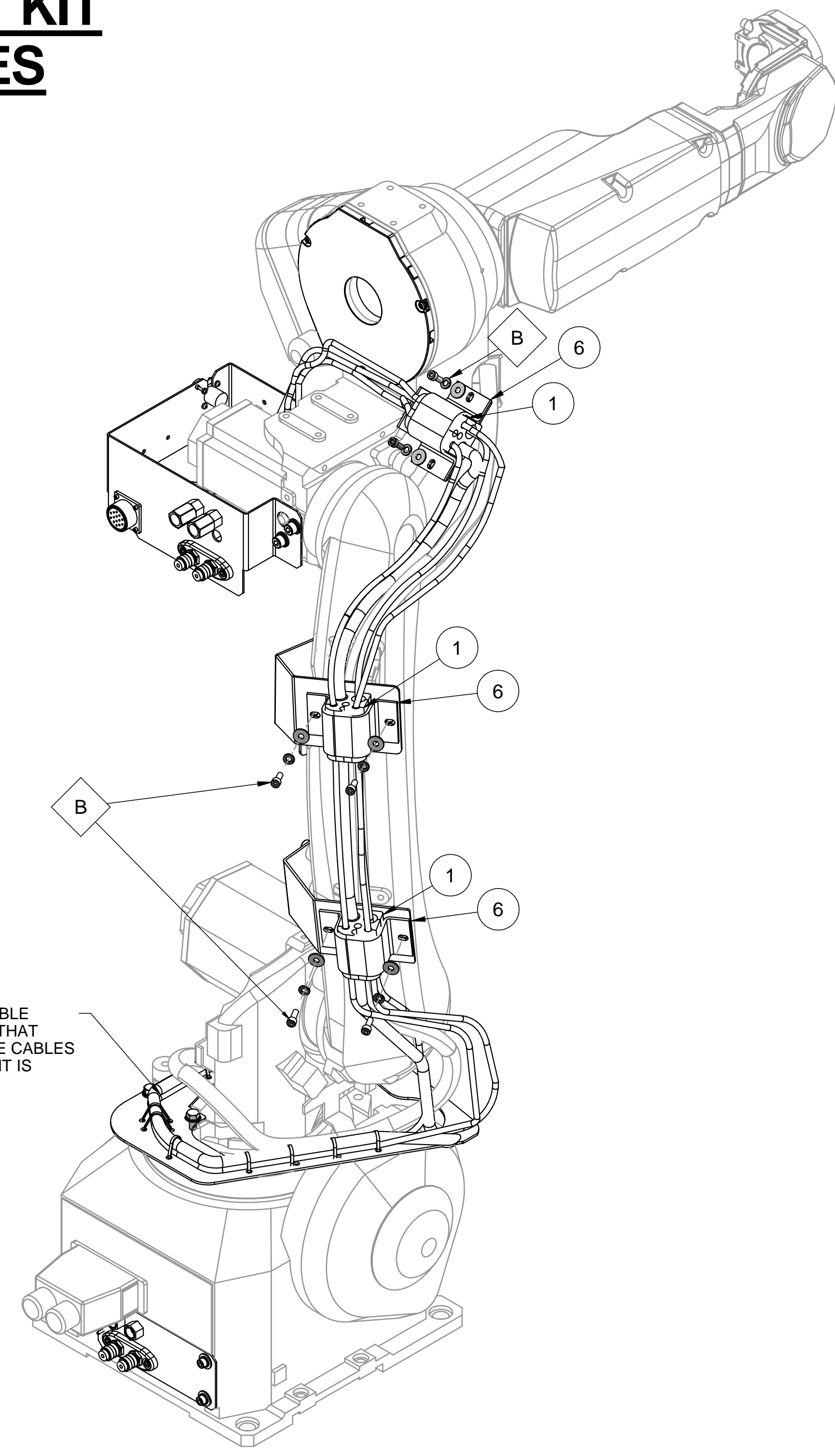
ATTACH ALL ITEMS BEFORE MOUNTING ITEM 12 TO ROBOT

DETAIL A



DETAIL B

USE CABLE TIES TO SECURE CABLE BUNDLE TO BRACKET. ENSURE THAT THERE IS ENOUGH SLACK IN THE CABLES SO THAT ROBOT ARM MOVEMENT IS NOT RESTRICTED.



THE LINCOLN ELECTRIC COMPANY

World's Leader in Welding and Cutting Products
Sales and Service through Subsidiaries and Distributors Worldwide
Cleveland, Ohio 44117-1199 U.S.A.

A.02

G9461PRINT

* SOLD SEPARATELY

PROPRIETARY & CONFIDENTIAL - THIS DOCUMENT CONTAINS PROPRIETARY INFORMATION OWNED BY LINCOLN GLOBAL, INC. AND MAY NOT BE DUPLICATED, COMMUNICATED TO OTHER PARTIES OR USED FOR ANY PURPOSE WITHOUT THE EXPRESS WRITTEN PERMISSION OF LINCOLN GLOBAL, INC.		CONTROL: CLEVELAND		SCALE: 1:1	EQUIPMENT TYPE: DRESS OUT KITS	DOCUMENT NUMBER: G9461	DOCUMENT REVISION: A.02
UNLESS OTHERWISE SPECIFIED TOLERANCE PER ASME Y14.5M-2009: ON 2 PLACE DECIMALS IS ± .02 IN. (± 0.5 MM) ON 3 PLACE DECIMALS IS ± .002 IN. (± 0.05 MM) ON ALL ANGLES IS ± 2 OF A DEGREE MATERIAL TOLERANCE (1:1) TO AGREE WITH PUBLISHED STANDARDS		ENGINEER: ACM	APPROVED: -	IF PRINTED @ A1 SIZE UNITS: INCH	SUBJECT: INSTALLATION INSTRUCTIONS (iD)	PROJECT NUMBER: CRM #	APPROVAL DATE: 12/21/2012
DO NOT SCALE THIS DRAWING					REFERENCE: -		