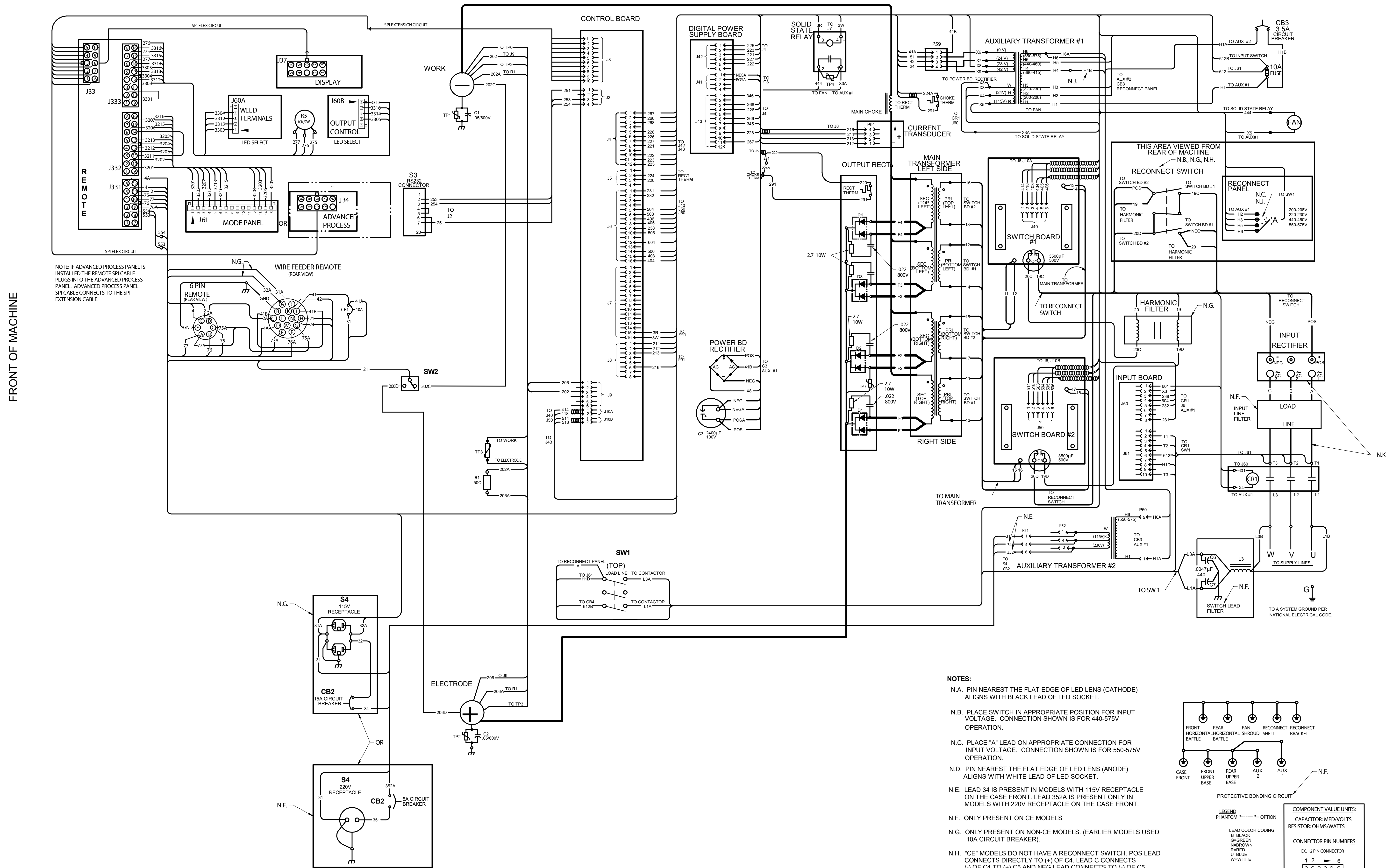


INVERTEC V450-PRO WIRING DIAGRAM G4923 REV: C

LEFT SIDE OF MACHINE



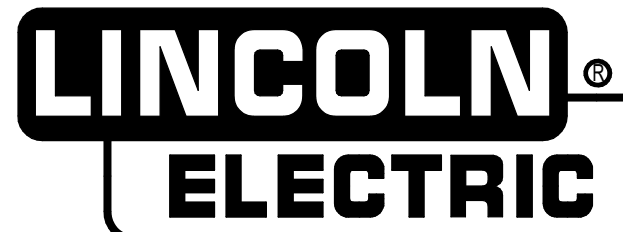
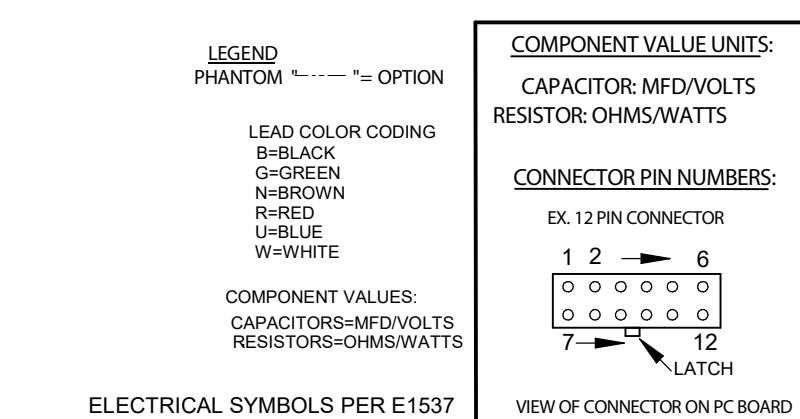
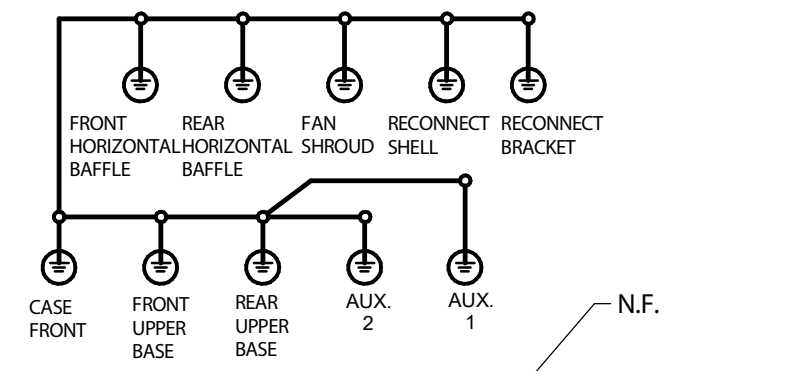
FRONT OF MACHINE

REAR OF MACHINE

RIGHT SIDE OF MACHINE

NOTES:

- N.A. PIN NEAREST THE FLAT EDGE OF LED LENS (CATHODE) ALIGNS WITH BLACK LEAD OF LED SOCKET.
- N.B. PLACE SWITCH IN APPROPRIATE POSITION FOR INPUT VOLTAGE. CONNECTION SHOWN IS FOR 440-575V OPERATION.
- N.C. PLACE "A" LEAD ON APPROPRIATE CONNECTION FOR INPUT VOLTAGE. CONNECTION SHOWN IS FOR 550-575V OPERATION.
- N.D. PIN NEAREST THE FLAT EDGE OF LED LENS (ANODE) ALIGNS WITH WHITE LEAD OF LED SOCKET.
- N.E. LEAD 34 IS PRESENT IN MODELS WITH 115V RECEPTACLE ON THE CASE FRONT. LEAD 352A IS PRESENT ONLY IN MODELS WITH 220V RECEPTACLE ON THE CASE FRONT.
- N.F. ONLY PRESENT ON CE MODELS
- N.G. ONLY PRESENT ON NON-CE MODELS. (EARLIER MODELS USED 10A CIRCUIT BREAKER).
- N.H. "CE" MODELS DO NOT HAVE A RECONNECT SWITCH. POS LEAD CONNECTS DIRECTLY TO (+) OF C4. LEAD C CONNECTS (+) OF C4 TO (+) C5 AND NEG LEAD CONNECTS TO (-) OF C5.
- N.J. THE "CE" MODELS DO NOT HAVE A RECONNECT PANEL. INSTEAD LEAD H4B CONNECTS H4 TO SW1.
- N.K. ON CE MODELS LEADS T1, T2 AND T3 ARE REPLACED BY LEADS A, B AND C. LEADS A, B AND C ARE CONNECTED TO THE INPUT RECTIFIER TERMINALS RATHER THAN CR1.



CLEVELAND, OHIO, U.S.A.