

LEGEND

SPECIFIED VALUES OF NUMBERED COMPONENTS

CONTROL CIRCUIT P.C. BOARD

- C20 .022 MFD
- C21 .22 MFD
- C22 100 MFD
- C23 .047 MFD
- C24 100 MFD
- C25 30 MFD
- C26 50 MFD
- D20 THRU D35 1 AMP
- DE20 20V.
- DE21 6.2V.
- DE22 82V.
- Q20, Q21 2N-5679 PNP

- R20 500 Ω, 1/4W.
- R21 100 Ω
- R22 2.7K Ω
- R23 330 Ω
- R24 27K Ω
- R25 10 Ω
- R26 100 Ω
- R27 22K Ω
- R28 2.7K Ω
- R29 10K Ω
- R30 1K Ω
- R31 500 Ω, 1/4W.
- R32 6.8K Ω
- R33 500 Ω, 5W.
- R34 4.7K Ω, 2W.
- R35 27 Ω
- R36 500 Ω, 1/4W.
- R37 330 Ω
- SCR1 12A, 400V.
- SUS 2N-9383

SNUBBER CIRCUIT P.C. BOARD

- C1, C2, C3 .68 MFD
- C4 1 MFD
- F1, R2, R3 47 Ω, 2W.
- P4 27 Ω, 2W.

FIRING CIRCUIT P.C. BOARD

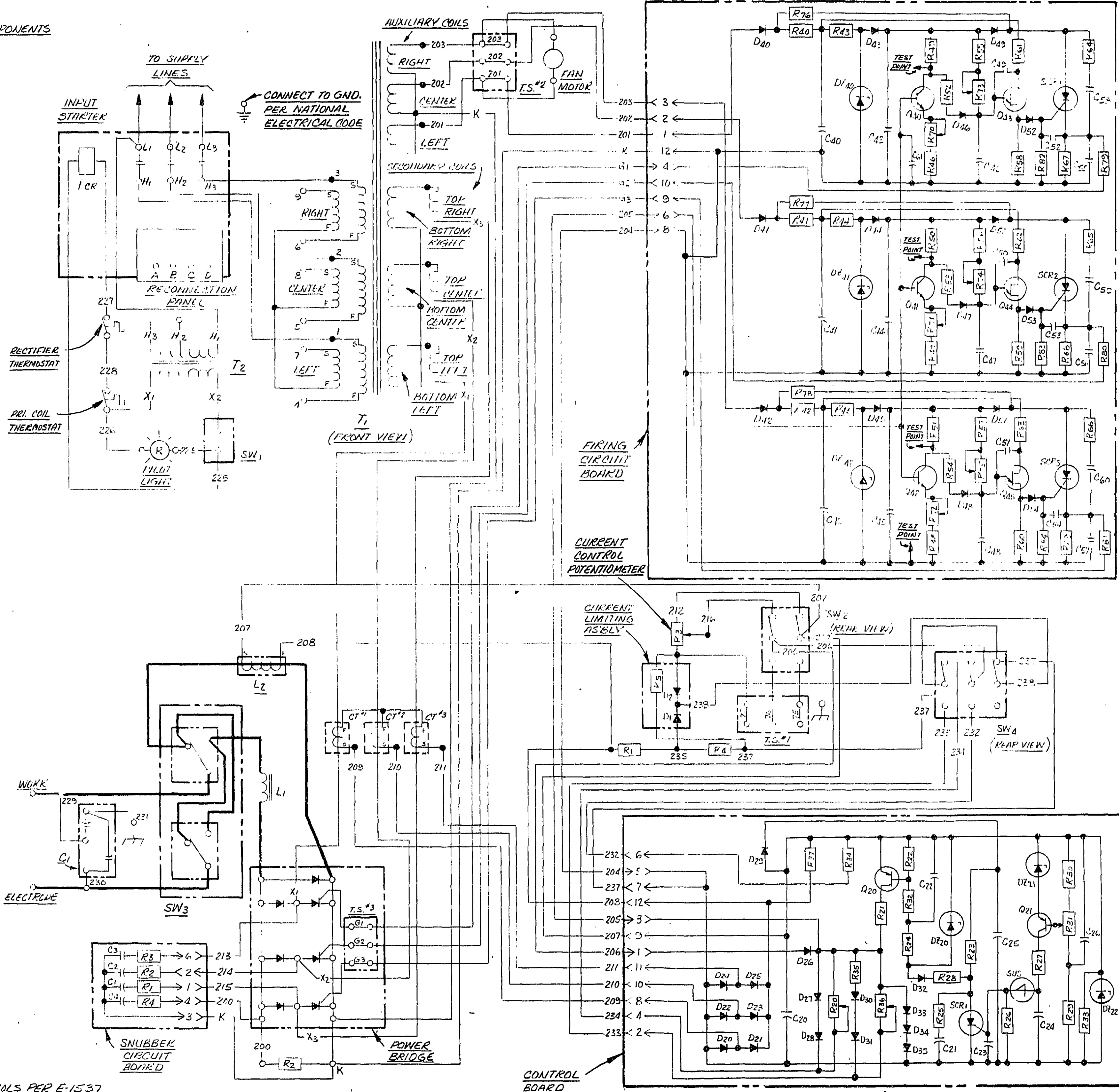
- LE20, DE21, DE22 20V, 1W
- C40, C41, C42, C61 .022 MFD
- C43, C44, C45 4.7 MFD
- C46 47 Ω
- C47, C52, C53 .1 MFD
- C49, C50, C51 .047 MFD
- C55, C56, C57 .022 MFD
- C58, C59, C60 .22 MFD
- D40 THRU D54 1 AMP

- R40, R41, R42 500 Ω, 4W
- R43, R44, R45 27 Ω
- R46, R47, R48 150 Ω
- R49, R50, R51 3.3K Ω
- R52, R53, R54 150 Ω
- R55, R56, R57 47K Ω
- R58, R59, R60 47 Ω
- R61, R62, R63 680 Ω
- R64, R65, R66 10 Ω
- R67, R68, R69 47 Ω
- R70, R71, R72 500 Ω, 1/4 W.
- R73, R74, R75 100K Ω, 1/4 W.
- R76, R77, R78 330 Ω, 4W.
- R79, R80, R81 5 Ω
- R82, R83, R84 100 Ω

- Q40, Q41, Q42 2N-3393 NPN
- Q43, Q44, Q45 DSE43 UJT
- SCR1, SCR2, SCR3 12A, 400V.

NOT ON P.C. BOARDS

- C1 .05 ± .05 MFD
- R1 50 Ω, 50W.
- R2 40 Ω, 100W.
- R3 10K Ω, 2W.
- R4 50 Ω, 25W.
- R5 270 Ω, 1/2 W.
- D1, D2 1 AMP
- L1 D.C. OUTPUT FILTER
- L2 FEEDBACK FILTER CHOKE
- SW1 POWER SWITCH
- SW2 CURRENT CONTROL (MACH. POS.)
- SW3 AEC POLARITY SWITCH
- SW4 DIAL SELECTOR ("B" POS.)
- T1 MAIN TRANSFORMER
- T2 PILOT TRANSFORMER



ANSI ELECTRICAL SYMBOLS PER E-1537

IDEALARC R3R-400
 SCHEMATIC
 SHEET NO. L-5602
 THE LINCOLN ELECTRIC CO.
 CLEVELAND, OHIO U.S.A.
 DATE 4-21-75 SCALE 1/4" = 1"

L-5602

UNLESS OTHERWISE SPECIFIED TOLERANCE
 ON 2 PLACE DECIMALS IS ± .02
 ON 3 PLACE DECIMALS IS ± .002
 ON ALL ANGLES IS ± .5 OF A DEGREE
 MAXIMUM WITH PUBLISHED STANDARDS.