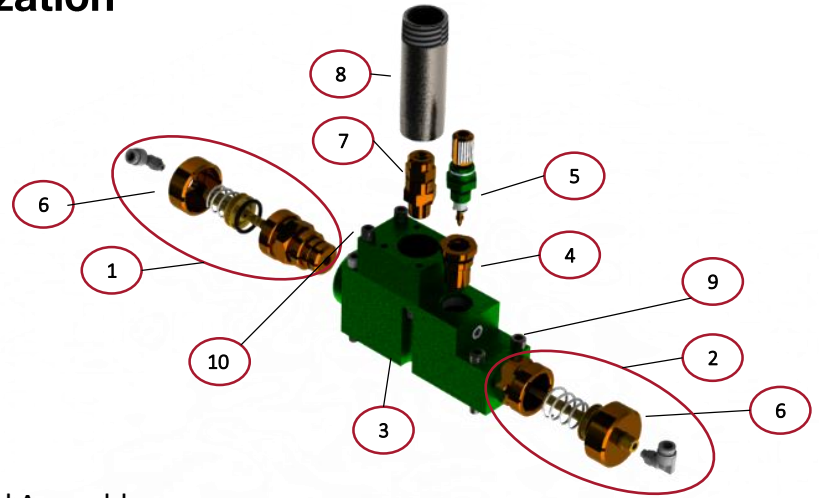
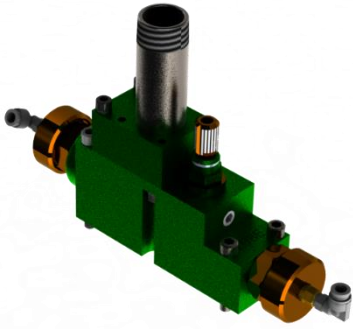


# 044 Spray Atomizer

## Large Pattern High Intensity Atomization



### Specification

#### Application

- Stand-off Remote Mounted

#### Body Material

- AL (Anodized)

#### Flow Rates (at 60 PSI)

- Air: Up to 20 CFM
- Liquid: 0-1.0 GPM or 0-2.5 GPM

#### Filtration & Viscosity

- Liquid: 80 Mesh (200 Micron)  
2000 cP (call for custom req.)

### Standard Assembly

| REF # | DESCRIPTION                   | LEGACY P/N | A SERIES P/N              |
|-------|-------------------------------|------------|---------------------------|
| 1     | 044 SPRAY AIR POPPET ASSEMBLY | 06956-18   | A4006815                  |
| 2     | 044 LUBE POPPET ASSEMBLY      | 06956-17   | A4006816                  |
| 3     | 044 BODY                      | 06956-09   | A3031806                  |
| 4     | 2.5 GPM MAX FLOW ORIFICE      | 06956-302A | A4007066                  |
| 5     | 0-2.5 GPM ADJUSTABLE METER    | 06954-08   | A4005669                  |
| 6     | 044 POPPET CAP                | 06956-24   | A3031808                  |
| 7     | ¼ NPT FULL CONE SPRAY TIP     | 50830      | A2023837                  |
| 8     | SS ¾ x 3" STRAIGHT OUTLET     | 01428-10   | A3031985                  |
| 9     | SS SHCS ¼-20 X 2-1/4          | 02623-36D  | HW_SHCS_SS_0.25-20X2.25-F |
| 10    | SS SHCS ¼-20 X 1-1/2          | 02561-D    | HW_SHCS_SS_0.25-20X1.5-PT |

## Order Configuration\*

044 -                           
 A      B      C      D      E

#### A – MOUNTING STYLE

- 0 – Manifold Mounted
- 1 – Standoff Mounted

#### B – SPRAY TIP STYLE

- 0 – Without Spray Tip
- 1 – 3" OAL Straight (STD)
- 2 – 10.0" OAL 45 DEG (53016)
- 3 – 12.5" OAL 45 DEG (53022)
- 4 – 8" OAL 90 DEG (53490)
- 5 – Fan Head 20" Pattern (54172)

#### C – MAXIMUM FLOW ORIFICE (Must Pair with Option D)

- 1 – 2.5 GPM MAX
- 2 – 1.0 GPM MAX

#### D – ADJUSTABLE METERING SCREW (Must Pair with Option C)

- 1 – 0-2.5 GPM MAX
- 2 – 0-1.0 GPM MAX
- 1A – .020 FIXED ORIFICE
- ...More Available

#### E – BODY MATERIAL

- 1 – AL (Anodized)
- 2 – DELRIN Acetal

### To Submit Orders

Email: [sales\\_columbus@lincolnelectric.com](mailto:sales_columbus@lincolnelectric.com)

Phone: +1.614.471.5926



Lincoln Electric Automation, Columbus  
 1700 Jetway Blvd  
 Columbus, OH, 43219