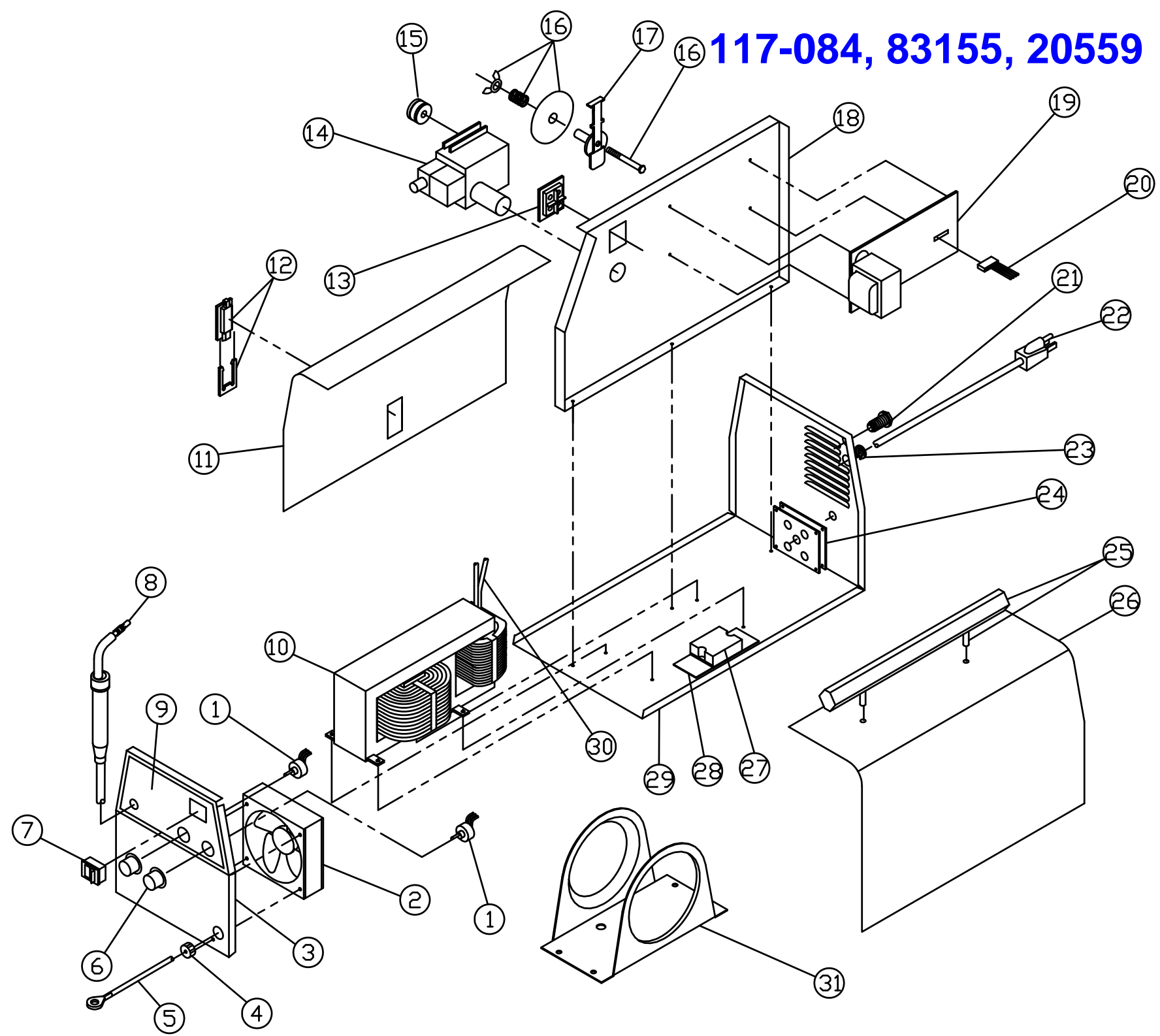


117-084, 83155, 20559



117-084, 83155, 20559

Item	Lincoln Stock #	Customer #	Description
1		246-120-000	Heat potentiometer, 5K, 1/4w
2	S18977-4	216-100-000	Fan motor
3	NLA	410-900-XXX	Front panel
4		541-057-000	Strain relief
5		238-223-666	Cable assy.
6	246-041-666	246-107-000	Knob
7		246-423-000	Power switch, DPST lighted
8	238-593-000	238-593-000	10' mig gun
9	NLA	410-869-XXX	Control panel
10		880-455-888	Transformer
11	NLA	410-865-XXX	Left side panel
12	NLA	312-295-666	Slide latch w/clip
13		246-414-666	Terminal block
14	880-406-001	880-406-666	Drive motor / gear box
15		310-187-000	Steel drive roller, (0.024/0.030/0.035)
	880-427-666	43241	Neoprene drive roller for aluminum
16	131-419-000		Tension kit less 312-110-666
17	312-076-666		Spindle
18	NLA	410-867-XXX	Center panel
19		880-451-666 / 880-456-000	Circuit board w/heat sink
20	NLA	870-425-666	Harness
21	253-333-000	253-333-666	Push in union fitting (5/32")

Model	Primary Input	Input Plug	Duty Cycle at Rated Output
117-084	120V, 25a	20A	20%

Item	Lincoln Stock #	Customer #	Description
22		248-328-666	Power cord
23		239-074-666	Bushing
24	880-402-666	880-454-666	Rectifier (includes 2 plates)
25		312-296-666	Handle
26	NLA	410-864-XXX	Right side panel
27	216-055-666	216-055-666	Triac relay
28	NLA	412-723-000	Heatsink
29	NLA	880-431-000	Base
30		246-428-000 , 880-435-000	Thermal protector, open 145° C, close 70° C
31	NLA	412-635-010	Tank Bracket

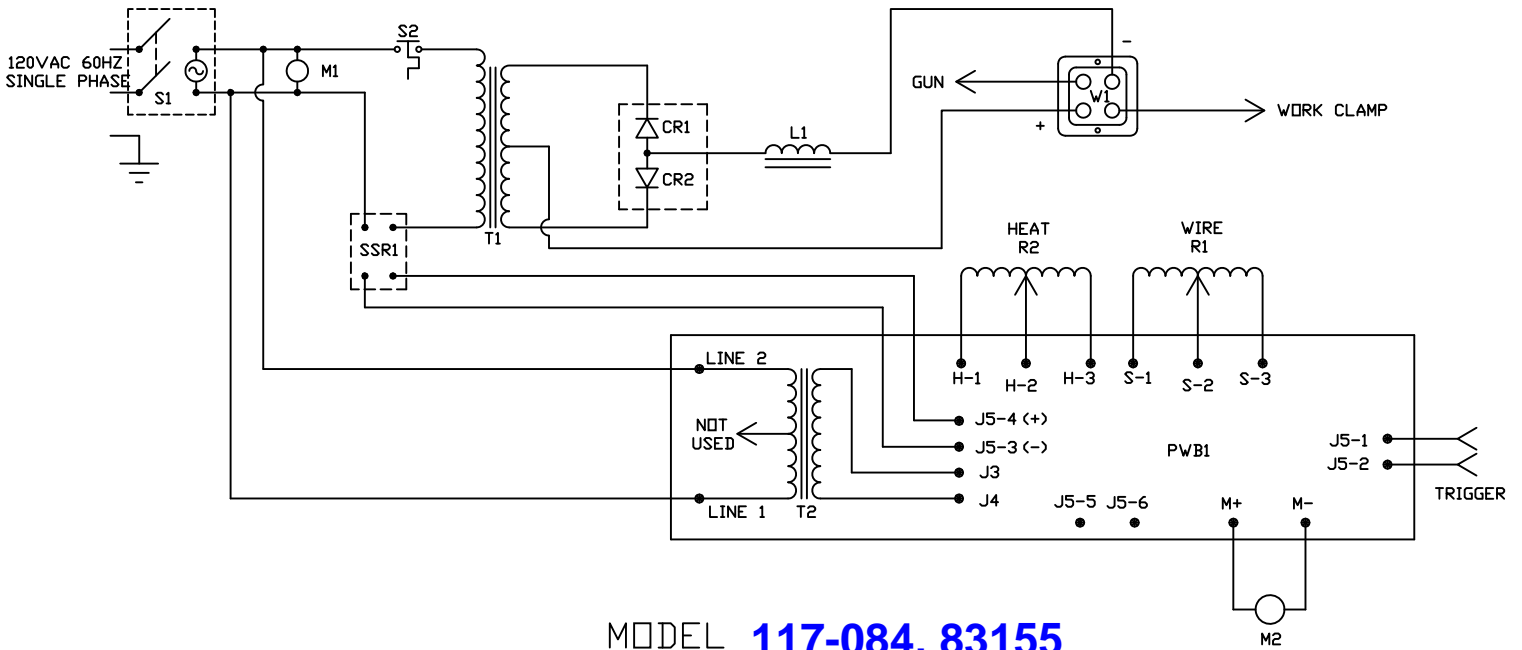
Not Shown

32	334-460-001	334-460-666	Regulator
33	S26399-28	059-217-040	5/32" gas hose
34	KP11-25, KH710	43090, M15522 334-159-300, KP2039-1B1	Contact Tips .025"
35	KP11-30, KH711	43100, M15523, 334-160-300, KP2039-2B1	Contact Tips .030"
36	KP11-35, KH712	43110, M15524, 334-161-300, KP2039-3B1	Contact Tips .035"
37	KP21T-50, KH725	43480, M15578, 334-203-000	Nozzle for Steel Welding
38	KP21T-62	43300, 334-210-300	Nozzle for Aluminium Welding
39	KP21-62- FAS	43290, KP1956-1, M15577 334-211-300	Spot Welding Nozzle
40	KP1939-1, KH726		Flux Core Nozzle
41	312-110-666	312-110-666	Wire spool adapter
42	K910-1	239-010-102	Ground clamp

9/14/2010

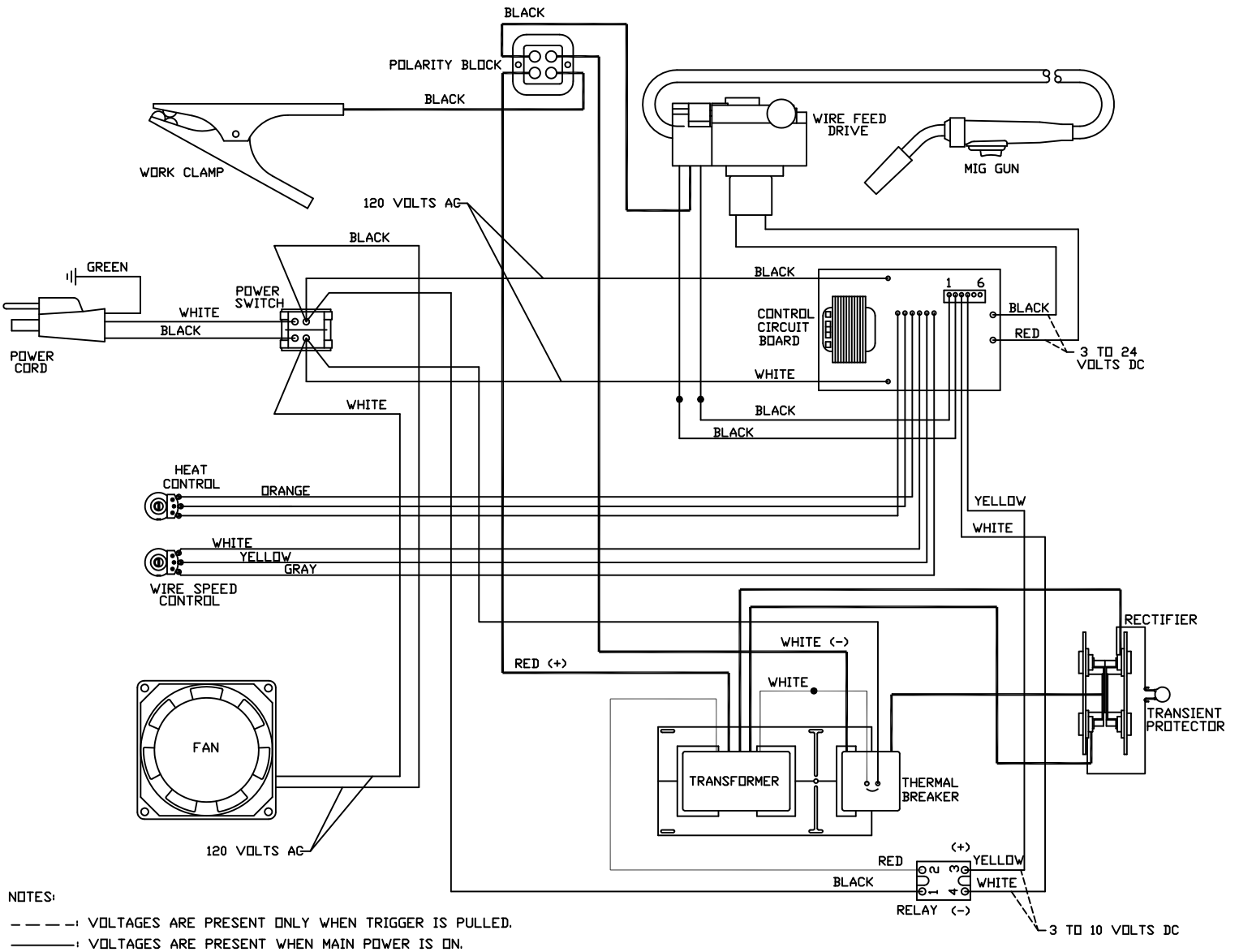
Rated Output	Voltage Settings	Agency Listing	Output
105 amps	Infinite	Cul	30-155 amps

SCHEMATIC DIAGRAM



MODEL **117-084, 83155**

WIRING DIAGRAM



NOTES:

- : VOLTAGES ARE PRESENT ONLY WHEN TRIGGER IS PULLED.
- : VOLTAGES ARE PRESENT WHEN MAIN POWER IS ON.

3 TO 10 VOLTS DC