



LINGGUN[®] PROMIG[™]

| AIR COOLED | |
|--------------|------------------------|
| W000275408-2 | LINGGUN PROMIG 230T 3M |
| W000275419-2 | LINGGUN PROMIG 230T 4M |
| W000275420-2 | LINGGUN PROMIG 230T 5M |
| W000345060-2 | LINGGUN PROMIG 270 3M |
| W000345061-2 | LINGGUN PROMIG 270 4M |
| W000345062-2 | LINGGUN PROMIG 270 5M |
| W000345066-2 | LINGGUN PROMIG 300 3M |
| W000345067-2 | LINGGUN PROMIG 300 4M |
| W000345068-2 | LINGGUN PROMIG 300 5M |
| W000345072-2 | LINGGUN PROMIG 400 3M |
| W000345073-2 | LINGGUN PROMIG 400 4M |
| W000345074-2 | LINGGUN PROMIG 400 5M |

For additional languages please visit our website:
www.lincolnelectric.eu > Support > Operator manuals and spares EU

THANK YOU FOR SELECTING A QUALITY PRODUCT BY LINCOLN ELECTRIC.

SAFETY INSTRUCTIONS



WARNING

This equipment have to be used by qualified personnel. Be sure that all installation, operation, maintenance and repair procedures are performed only by qualified person. Read and understand this manual before operating this equipment. Failure to follow the instructions in this manual could cause serious personal injury, loss of life, or equipment damage. Read and understand the following explanations of the warning symbols. Lincoln Electric is not responsible for damages caused by improper installation, improper care or abnormal operation.

| | |
|--|--|
| | <p>WARNING: This symbol indicates that instructions must be followed to avoid serious personal injury, loss of life, or equipment damage. Protect yourself and others from possible serious injury or death.</p> |
| | <p>READ AND UNDERSTAND INSTRUCTIONS: Read and understand this manual before operating this equipment. Arc welding can be hazardous. Failure to follow the instructions in this manual could cause serious personal injury, loss of life, or equipment damage. Before any internal verifications and repair work, make sure that the equipment is separated from the electric installation by electrical isolation (by electrical isolation is meant a group of operations designed to separate and keep the equipment de-energized).</p> |
| | <p>ELECTRIC SHOCK CAN KILL: Welding equipment generates high voltages. Do not touch the electrode, work clamp, or connected work pieces when this equipment is turned on. Insulate yourself from the electrode, work clamp, and connected work pieces.</p> |
| | <p>ELECTRICALLY POWERED EQUIPMENT: Regularly inspect the input, electrode, and work clamp cables. If any insulation damage exists replace the cable immediately. Do not place the electrode holder directly on the welding table or any other surface in contact with the work clamp to avoid the risk of accidental arc ignition. At least every six months, you must check the proper condition of the insulation and connections of the electric equipment and accessories such as plugs, flexible wires, ducts, connectors, extension leads, part holders, electrode-holders, or torches etc.</p> |
| | <p>ELECTROMAGNETIC FIELD MAY BE DANGEROUS: Electric current flowing through any conductor creates electromagnetic field (EMF). EMF fields may interfere with some pacemakers, and welders having a pacemaker shall consult their physician before operating his equipment. Never wrap the welding/cutting cable round your body or rest it on your shoulder;</p> |
| | <p>CE COMPLIANCE: This equipment complies with the European Community Directives.</p> |
| | <p>ARTIFICIAL OPTICAL RADIATION: According with the requirements in 2006/25/EC Directive and EN 12198 Standard, the equipment is a category 2. It makes mandatory the adoption of Personal Protective Equipment (PPE) having filter with a protection degree up to a maximum of 15, as required by EN169 Standard.</p> |
| | <p>FUMES AND GASES CAN BE DANGEROUS: Welding may produce fumes and gases hazardous to health. Avoid breathing these fumes and gases. To avoid these dangers the operator must use enough ventilation or exhaust to keep fumes and gases away from the breathing zone.</p> |
| | <p>ARC RAYS CAN BURN: Use a shield with the proper filter and cover plates to protect your eyes from sparks and the rays of the arc when welding or observing. To protect the skin, use suitable clothing made of durable, fireproof material. Protect other nearby personnel with suitable, non-flammable screening and warn them not to watch the arc nor expose themselves to the arc.</p> |
| | <p>WELDING SPARKS CAN CAUSE FIRE OR EXPLOSION: Remove fire hazards from the welding area and have a fire extinguisher easily accessible. Welding sparks and hot materials from the welding process can easily go through small cracks and openings to adjacent areas. Do not weld on any tanks, drums, containers, or material until the proper steps have been taken to insure that no flammable or toxic vapors will be present. Never use this equipment when flammable gases, vapors or flammable liquids are present.</p> |
| | <p>WELDED MATERIALS CAN BURN: Welding generates a large amount of heat. Hot surfaces and materials in work area can cause serious burns. Use gloves and pliers when touching or moving materials in the work area.</p> |
| | <p>CYLINDER MAY EXPLODE IF DAMAGED: Use only certificate, compressed gas cylinders containing the correct shielding gas for the process used and properly operating regulators designed for the gas and pressure used. Always keep cylinders in an upright position securely chained to a fixed support. Do not move or transport gas cylinders with the protection cap removed. Do not allow the electrode, electrode holder, work clamp or any other electrically live part to touch a gas cylinder. Gas cylinders must be located away from areas where they may be subjected to physical damage or the welding process including sparks and heat sources.</p> |
| | <p>HOT COOLANT CAN BURN SKIN: Always be sure coolant is NOT HOT before servicing the cooler.</p> |

The manufacturer reserves the right to make changes and/or improvements in design without upgrade at the same time the operator's manual.

GENERAL DESCRIPTION

The LINGGUN® PROMIG™ Amps guns have been designed to meet IEC 60974-7 specification for welding with steel electrode using the GMAW (gas metal arc welding) and gas-shielded FCAW (flux-cored arc welding) processes. LINGGUN® PROMIG™ guns are manually guided and air cooled or water cooled (models with "W").

The LG PROMIG guns can be connected to the any feeder with EURO connector. For the best performance is recommended to use these guns with the Lincoln Electric welders, coolers and FREEZCOOL.

Please always use the original wear parts.

TECHNICAL SPECIFICATIONS

| PN | Description | Duty Cycle |
|--------------|------------------------|-----------------------------|
| W000275408-2 | LINGGUN PROMIG 230T 3M | 230A CO2, 200A M21 @60% |
| W000275419-2 | LINGGUN PROMIG 230T 4M | |
| W000275420-2 | LINGGUN PROMIG 230T 5M | |
| W000345060-2 | LINGGUN PROMIG 270 3M | 270A CO2@, 235A M21 @60% |
| W000345061-2 | LINGGUN PROMIG 270 4M | |
| W000345062-2 | LINGGUN PROMIG 270 5M | |
| W000345066-2 | LINGGUN PROMIG 300 3M | 300A CO2, 270A M21 @60% |
| W000345067-2 | LINGGUN PROMIG 300 4M | |
| W000345068-2 | LINGGUN PROMIG 300 5M | |
| W000345072-2 | LINGGUN PROMIG 400 3M | 400A CO2, 370A M21 @60% |
| W000345073-2 | LINGGUN PROMIG 400 4M | |
| W000345074-2 | LINGGUN PROMIG 400 5M | |

Air cooled versions:

| | | |
|-------------------------|--------------------|--------------|
| Voltage class | 113 V | |
| Gas flow | 10 - 18 l/min | |
| Using wires | LG PROMIG 230T | 0,6 - 1,2 mm |
| | LG PROMIG 270, 300 | 0,8 - 1,2 mm |
| | LG PROMIG 400 | 1,0 - 1,6 mm |
| Trigger contact | 50 mA, 32V DC | |
| Power connection | NF A85-631 | |

ORIGINAL EQUIPMENT FITTED TO THE GUN

| Gun | Wire to be used | Contact tip | Nozzle | |
|----------------|-----------------|-------------|------------|-----|
| LG Promig 230T | 0,8 mm steel | W000345574 | W000345408 | Ø12 |
| LG Promig 270 | 1,0 mm steel | W000345575 | W000345411 | Ø14 |
| LG Promig 300 | 1,2 mm steel | W000345582 | W000345422 | Ø16 |
| LG Promig 400 | 1,2 mm steel | W000345589 | W000345427 | Ø16 |

EXPENDABLE REPLACEMENT PARTS

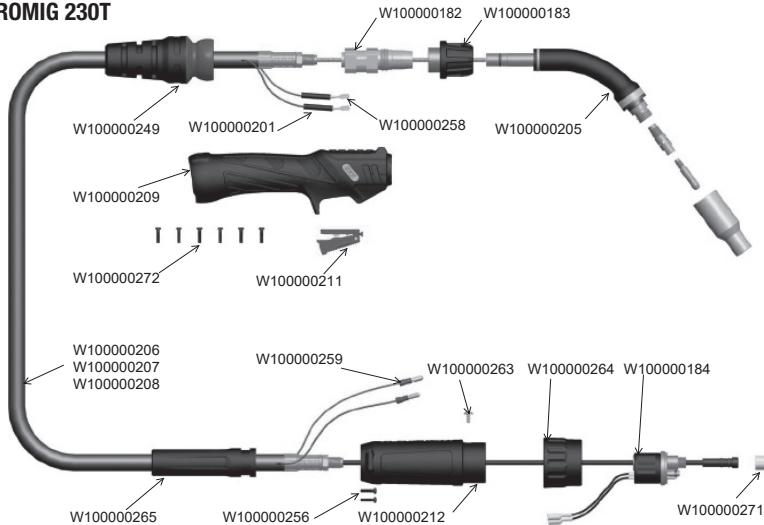
| LG PROMIG | | Ø mm | Contact tip | Diffuser | Nozzle | Internal liner | | |
|-------------------|-----------|------|-------------|------------|--|----------------|------------|------------|
| | | | | | | 3 m | 4 m | 5 m |
| AIR COOLED | | | | | | | | |
| 230T | Steel | 0.8 | W000345574 | W000345335 | W000345408 (D12) or W000345409 (D14) | W100000273 | W100000274 | W100000275 |
| | | 1.0 | W000345575 | | | W100000276 | W100000277 | W100000278 |
| | | 1.2 | W000345577 | | | W100000276 | W100000277 | W100000278 |
| 270 | Steel | 0.8 | W000345574 | W000345335 | W000345410 (D12) or W000345411 (D14) | W100000273 | W100000274 | W100000275 |
| | | 1.0 | W000345575 | | | W100000276 | W100000277 | W100000278 |
| | | 1.2 | W000345577 | | | W100000276 | W100000277 | W100000278 |
| | Aluminium | 1.0 | W000345576 | | | W100000279 | W100000280 | W100000281 |
| | | 1.2 | W000345578 | | | W100000279 | W100000280 | W100000281 |

EXPENDABLE REPLACEMENT PARTS

| LG PROMIG | Ø mm | Contact tip | Diffuser | Nozzle | Internal liner | | | |
|-------------------|-----------|-------------|------------|------------|--|------------|------------|------------|
| | | | | | 3 m | 4 m | 5 m | |
| AIR COOLED | | | | | | | | |
| 300 | Steel | 1.0 | W000345580 | W000345341 | W000345420 (D12) or W000345421 (D14) or W000345422 (D16) | W100000282 | W100000283 | W100000284 |
| | | 1.2 | W000345582 | | | W100000282 | W100000283 | W100000284 |
| | | 1.4 | W000345584 | | | W100000285 | W100000286 | W100000287 |
| | | 1.6 | W000345585 | | | W100000285 | W100000286 | W100000287 |
| | Aluminium | 1.0 | W000345581 | | | W100000288 | W100000289 | W100000290 |
| | | 1.2 | W000345583 | | | W100000288 | W100000289 | W100000290 |
| 400 | Steel | 1.0 | W000345587 | W000345347 | W000345427 (D16) or W000345428 (D19) | W100000282 | W100000283 | W100000284 |
| | | 1.2 | W000345589 | | | W100000282 | W100000283 | W100000284 |
| | | 1.4 | W000345591 | | | W100000285 | W100000286 | W100000287 |
| | | 1.6 | W000345592 | | | W100000285 | W100000286 | W100000287 |
| | Aluminium | 1.0 | W000345588 | | | W100000288 | W100000289 | W100000290 |
| | | 1.2 | W000345590 | | | W100000288 | W100000289 | W100000290 |
| | | 1.6 | W000345593 | | | W100000291 | W100000292 | W100000293 |
| | | | W000345593 | | | W100000291 | W100000292 | W100000293 |

SPARE PARTS

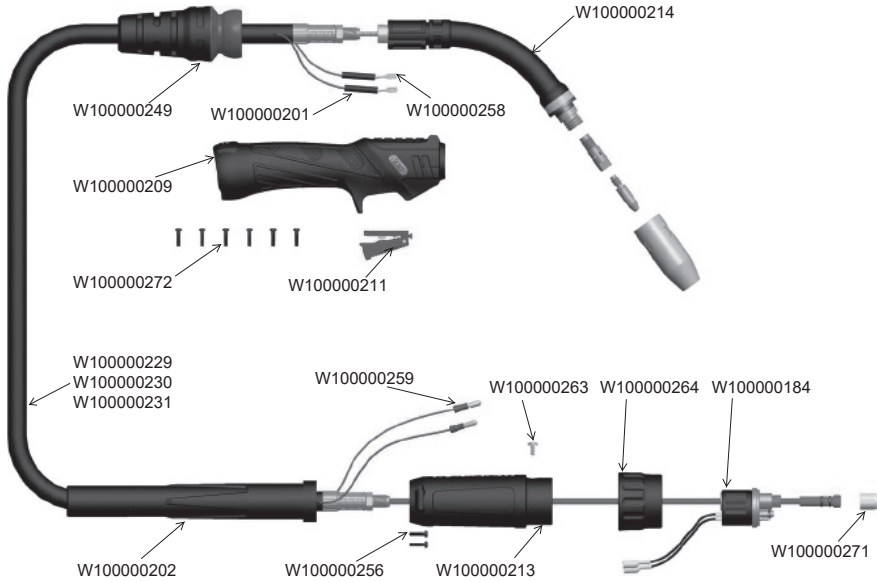
LG PROMIG 230T



| PN. | Description |
|------------|---|
| W100000184 | LG PROMIG 230T/270 Hybrid Gun Plug Body C/W Spring Pins |
| W100000202 | LG PROMIG 270 CABLE SUPPORT |
| W100000209 | LG PROMIG Promig Small Handle |
| W100000211 | LG PROMIG Tigger |
| W100000213 | LG PROMIG 270 Gun Plug Housing Fitting Large Support |
| W100000214 | LG PROMIG 270 Swan Neck |
| W100000229 | LG PROMIG 270 Coax Cable Assy x 3m |
| W100000230 | LG PROMIG 270 Coax Cable Assy x 4m |
| W100000231 | LG PROMIG 270 Coax Cable Assy x 5m |

| PN. | Description |
|------------|---|
| W100000249 | LG PROMIG 230T/270 Cable Support C/W Ball Joint |
| W100000256 | LG PROMIG 230T/270 GUN PLUG HOUSING SCREW |
| W100000258 | LG PROMIG CABLE TERMINAL |
| W100000259 | LG PROMIG CABLE TERMINAL MALE |
| W100000263 | LG PROMIG 230T/270 GUN PLUG SCREW |
| W100000264 | LG PROMIG 230T/270 GUN PLUG NUT |
| W100000271 | LG PROMIG LINER RETAINING NUT |
| W100000272 | LG PROMIG DELTA-PT-WN5452-25X12-DIN50962-TX8 |

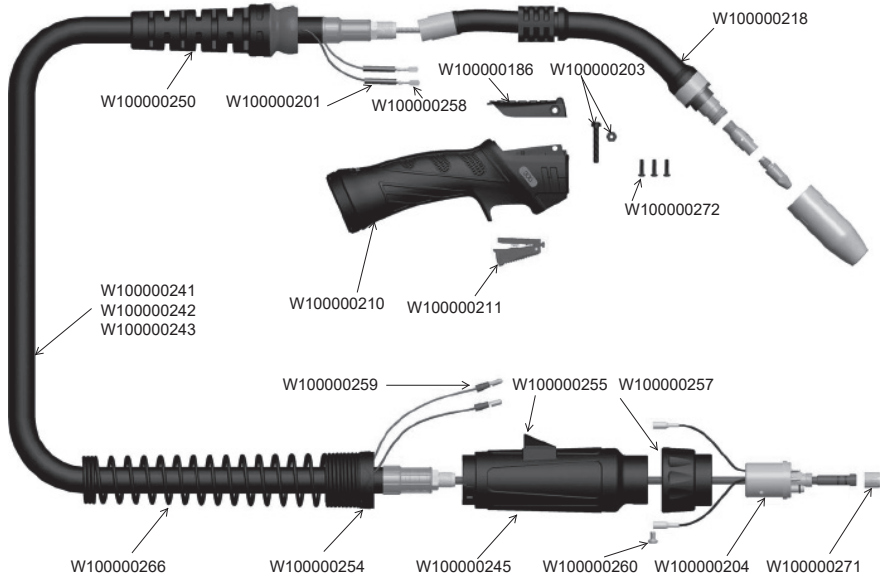
LG PROMIG 270



| PN. | Description |
|-------------------|--|
| W100000184 | LG PROMIG 230/270 Hybrid Gun Plug Body C/W Spring Pins |
| W100000201 | LG PROMIG HEAT SHRINK TUBE 3MM |
| W100000202 | LG PROMIG 270 CABLE SUPPORT |
| W100000209 | LG PROMIG Promig Small Handle |
| W100000211 | LG PROMIG Tigger |
| W100000213 | LG PROMIG 270 Gun Plug Housing Fitting Large Support |
| W100000214 | LG PROMIG 270 Swan Neck |
| W100000229 | LG PROMIG 270 Coax Cable Assy x 3m |
| W100000230 | LG PROMIG 270 Coax Cable Assy x 4m |

| PN. | Description |
|-------------------|---|
| W100000231 | LG PROMIG 270 Coax Cable Assy x 5m |
| W100000249 | LG PROMIG 230T/270 Cable Support C/W Ball Joint |
| W100000256 | LG PROMIG 230T/270 GUN PLUG HOUSING SCREW |
| W100000258 | LG PROMIG CABLE TERMINAL |
| W100000259 | LG PROMIG CABLE TERMINAL MALE |
| W100000263 | LG PROMIG 230T/270 GUN PLUG SCREW |
| W100000264 | LG PROMIG 230T/270 GUN PLUG NUT |
| W100000271 | LG PROMIG LINER RETAINING NUT |
| W100000272 | LG PROMIG DELTA-PT-WN5452-25X12-DIN50962-TX8 |

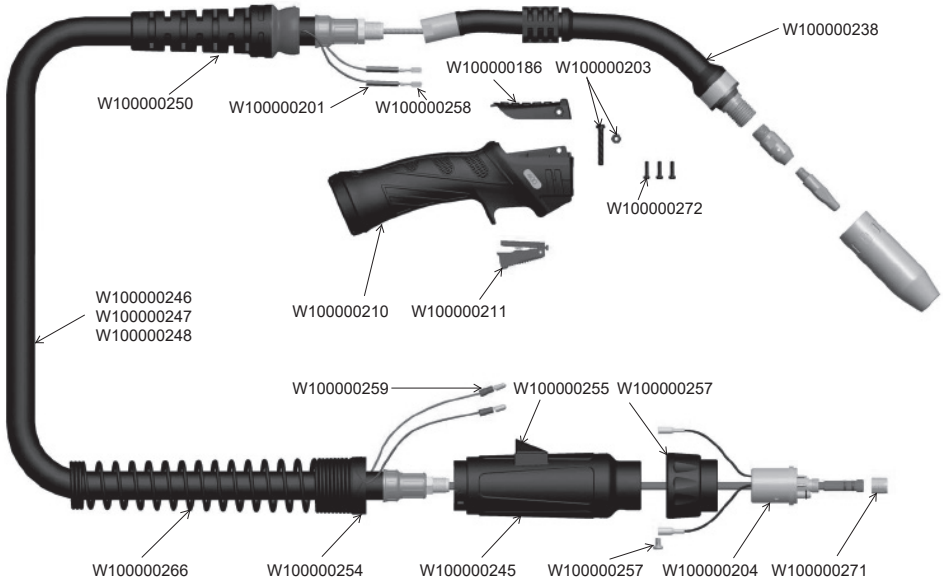
LG PROMIG 300



| PN. | Description |
|-------------------|---|
| W100000186 | LG PROMIG 300/400/500W Handle Control Cover |
| W100000201 | LG PROMIG HEAT SHRINK TUBE 3MM |
| W100000203 | LG PROMIG 300/400/500W SCREW KIT |
| W100000204 | LG PROMIG 300/400 Gun Plug Body C/W Spring Pins |
| W100000210 | LG PROMIG Promig Large Handle |
| W100000211 | LG PROMIG Trigger |
| W100000218 | LG PROMIG 300 Swan Neck |
| W100000241 | LG PROMIG 300 Coax Cable Assy x 3m |
| W100000242 | LG PROMIG 300 Coax Cable Assy x 4m |
| W100000243 | LG PROMIG 300 Coax Cable Assy x 5m |

| PN. | Description |
|-------------------|---|
| W100000245 | LG PROMIG 300/400 Gun Plug Large Housing Assembly |
| W100000250 | LG PROMIG 300/400 Cable Support C/W Ball Joint |
| W100000254 | LG PROMIG SPRING CABLE SUPPORT NUT |
| W100000255 | LG PROMIG 300/400 LARGE HOUSING WIRE COVER |
| W100000257 | LG PROMIG GUN PLUG NUT |
| W100000258 | LG PROMIG CABLE TERMINAL |
| W100000259 | LG PROMIG CABLE TERMINAL MALE |
| W100000260 | LG PROMIG GUN PLUG SCREW |
| W100000266 | LG PROMIG 300/400 HOUSING SPRING (SHORT) |
| W100000271 | LG PROMIG LINER RETAINING NUT |
| W100000272 | LG PROMIG DELTA-PT-WN5452-25X12-DIN50962-TX8 |

LG PROMIG 400



| PN. | Description |
|-------------------|---|
| W100000186 | LG PROMIG 300/400/500W Handle Control Cover |
| W100000201 | LG PROMIG HEAT SHRINK TUBE 3MM |
| W100000203 | LG PROMIG 300/400/500W SCREW KIT |
| W100000204 | LG PROMIG 300/400 Gun Plug Body C/W Spring Pins |
| W100000210 | LG PROMIG Promig Large Handle |
| W100000211 | LG PROMIG Tigger |
| W100000238 | LG PROMIG 400 Swan Neck |
| W100000245 | LG PROMIG 300/400 Gun Plug Large Housing Assembly |
| W100000246 | LG PROMIG 400 Coax Cable Assy x 3m |
| W100000247 | LG PROMIG 400 Coax Cable Assy x 4m |
| W100000248 | LG PROMIG 400 Coax Cable Assy x 5m |

| PN. | Description |
|-------------------|--|
| W100000250 | LG PROMIG 300/400 Cable Support C/W Ball Joint |
| W100000254 | LG PROMIG SPRING CABLE SUPPORT NUT |
| W100000255 | LG PROMIG 300/400 LARGE HOUSING WIRE COVER |
| W100000257 | LG PROMIG GUN PLUG NUT |
| W100000258 | LG PROMIG CABLE TERMINAL |
| W100000259 | LG PROMIG CABLE TERMINAL MALE |
| W100000260 | LG PROMIG GUN PLUG SCREW |
| W100000266 | LG PROMIG 300/400 HOUSING SPRING (SHORT) |
| W100000271 | LG PROMIG LINER RETAINING NUT |
| W100000272 | LG PROMIG DELTA-PT-WN5452-25X12-DIN50962-TX8 |

MAINTENANCE

Periodically remove and clean the nozzle, contact tip and gas diffuser. Replace the nozzle if damaged. Regular use of an antispatter compound will reduce the adherence of spatter and ease its removal. Clean cable liner after using approximately 140 kg of electrode. Remove the cable from the wire feeder and lay it out straight on the floor. Remove the contact tip from the gun. Using an air hose and only partial pressure, gently blow out the cable liner from the gas diffuser end.

CAUTION!

Excessive pressure at the start may cause the dirt to form a plug. Flex the cable over its entire length and again blow out the cable. Repeat this procedure until no further dirt comes out.

Lincoln Electric Europe EU DECLARATION OF CONFORMITY



Manufacturer and technical documentation holder:

Lincoln Electric Iberia S.L.
Ctra. Laureà Miró 396-398
08980 Sant Feliu de Llobregat (Barcelona)
Spain

This declaration of conformity is issued under the sole responsibility of the manufacturer.

Object of the declaration:

LINGGUN PROMIG MIG Welding Guns

Welding Equipment

Product numbers:

**W000275408-2, W000275419-2, W000275420-2
W000345060-2, W000345061-2, W000345062-2
W000345066-2, W000345067-2, W000345068-2
W000345072-2, W000345073-2, W000345074-2
W000345063-2, W000345064-2, W000345065-2
W000345069-2, W000345070-2, W000345071-2
W000345075-2, W000345076-2, W000345077-2**

The object of the declaration described above is in conformity with the relevant Union harmonisation legislation:

Is in conformity with Council Directives and amendments:

**Low Voltage Directive 2014/35/EU
RoHS Directive 2011/65/EU**

References to the relevant harmonized standards used, and references to the other technical specifications in relation to which conformity is declared:

**EN 60974-7: 2013 ; Arc Welding Equipment -Part
7: Torches**

Signed for and on Behalf of:
Lincoln Electric Iberia

Agnieszka Kujacz - Koralewska
Product Manager Equipment Welding Guns EMEAR

Barcelona, 27.09.2021