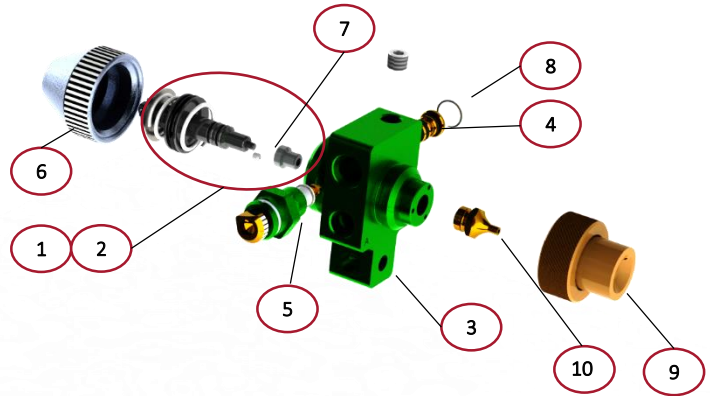
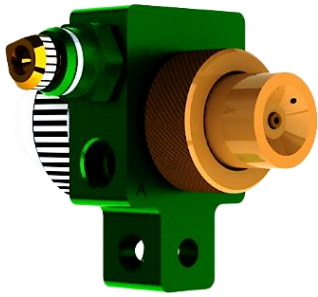


# 014 Spray Atomizer

## Remote Targeted Minimal Spray



### Specification

#### Application

- Stand-off Remote Mounted

#### Body Material

- AL (Anodized)

#### Flow Rates (at 60 PSI)

- Air: Up to 13 CFM
- Liquid: 0-1.0 GPM

#### Filtration & Viscosity

- Liquid: 80 Mesh (200 Micron)  
1000 cP (call for custom req.)

### Standard Assembly

REF #	DESCRIPTION	LEGACY P/N	A SERIES P/N
1	014 POPPET ASSEMBLY	06954-09	A4005642
2	014 REBUILD KIT	N/A	A4008279
3	014 BODY	06957-09	A3031810
4	1.0 GPM MAX FLOW ORIFICE	06954-102A	A4005667
5	0-1.0 GPM ADJUSTABLE METER	06955-08	A4005681
6	014 POPPET CAP	06954-03	A3027000
7	AIR RESTRICTION INSERT	49877	A2024180
8	MAX ORIFICE E-CLIP RETAINER	45284	A2020940
9	SPRAY TIP ASSEMBLY	06929-C	A3031781
10	LIQUID INJECTION TIP	06931	A3031782

### Order Configuration\*

014 - 0 1 1 1 1  
 A B C D E

#### A – BODY MATERIAL

0 – Aluminum

#### B – SPRAY TIP ASSEMBLY

- 1 – Conical
- 2 – Internal Fan 0.040
- 3 – Internal Fan 0.020
- 4 – External Fan
- 5 – Extended Cone
- 6 – ¼ NPT Female Connector
- 7 – 1/8 x 3" Straight Pipe

#### C – ADJUSTABLE METER SCREW

- 1 – 0-1.0 GPM MAX
- 1A – .020 FIXED ORIFICE
- ...More Available

#### D – MAXIMUM FLOW ORIFICE

1 – 1.0 GPM MAX

#### E – AIR RESTRICTION

- 0 – Full Air (No Plug)
- 1 – 33% Restriction (One Plug)
- 2 – 66% Restriction (Two Plugs)

### To Submit Orders

Email: [sales@rimrockcorp.com](mailto:sales@rimrockcorp.com)

Phone: +1.614.471.5926

Publication 04.47 - Issue Date 01/2021  
 © Lincoln Electric Automation - Columbus



Lincoln Electric Automation  
 1700 Jetway Blvd  
 Columbus, OH, 43219

\*Contact us for custom configurations not shown in options lists