



VIKING 3350 SERIES 4

Auto-Darkening Welding Helmets

LINCOLN®
ELECTRIC

LINCOLN®
ELECTRIC



Processes

Stick, TIG, Pulsed TIG, MIG, Pulsed MIG, Flux-Cored, Gouging, Grinding

Applications

Fabrication, Production, Education, Shipbuilding, Construction

Product Number

Mojo: K3101-4

Black: K3034-4



Features:

- Exclusive 4C[®] Lens Technology
- 1/1/1 Optical Clarity
- 95 x 85mm Auto-Darkening viewing area
- World class technical specifications
- Easy to adjust
- Innovative X6 Headgear™ distributes weight, reduces pressure and optimises balance
- Low profile external grind control
- Consistent indoor and outdoor performance

WELDING HELMET SPECIFICATIONS 3350 SERIES

Lens Switching Speed [sec]	1/25,000
Variable Shade / Control	5-13 Internal
Magnifying "Cheater" Capable Lens	Yes
Grind Mode Shade / Control	DIN3.5 / Internal
Light Sensitivity Control	Continuous
Delay Control Dark to Light [sec]	0.1÷1 Fully Adjustable
Arc Sensors	4
TIG Amp Rating	≥ 2A AC/DC
Cartridge Size [mm]	114 x 133
View Size [mm]	95 x 85
Temperature Range	Operating: -100C - +550C · Storage: -200C - +700C
Weight [g]	595
Optical Clarity	1/1/1 4C Technology
Head Gear	Pivot
Battery Type	1 x CR 2450 Battery
Bonus Accessories	Extra cover lenses (2) inside, (5) outside, Bandanna, Sport-pak bag.



X6 HEADGEAR - SUPERIOR COMFORT



1. Adjustable, form fitting top head supports and distributes weight to optimise balance
2. Orientation adjustment pin for optimal resting position
3. Rotatable front headband for personalised support and fit
4. Innovative and easy to use forward and backward adjustments
5. Strategically positioned rear headband improves balance
6. Unique flexible backpad eliminates common pressure point

Switching Modes Made Easy

The left side of the helmet features an industrial button which connects to the auto darkening lens. Press and hold for 3 seconds to switch between weld and grind modes.

Benefits:

- Increases productivity
- Prevents accidental activation
- Enhanced application versatility



4C LENS TECHNOLOGY

4C Lens Technology

Lincoln Electric's proprietary liquid crystal display (LCD) enhances the visible colour spectrum of the display. Unlike traditional auto-darkening filters, 4C lens technology broadens the colour range and hues which can be seen in both light and dark states. This eliminates imperfections and colour saturation to create the clearest view of the base material, arc and puddle, while reducing eye strain.



1/1/1 OPTICAL CLARITY

<p>Eliminating Distortion</p>	<p>Removing Blurriness</p>	<p>Uniform Shade</p>	<p>Consistent Angle Performance</p> <p>Consistent Shade at all Angles</p>
--------------------------------------	-----------------------------------	-----------------------------	--

ADDITIONAL FEATURES

Hard Hat Compatible



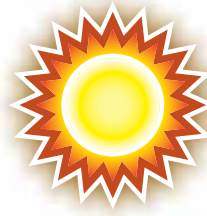
Extra Large Viewing Area



Cheater Lens Compatible

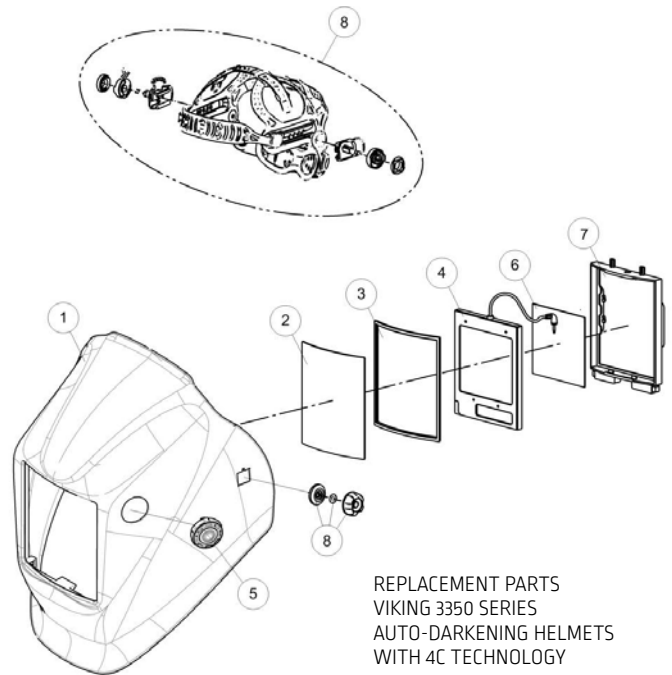


Enhanced Outdoor Performance



REPLACEMENT PARTS

Part Number	Description	Qty/Pack
KP2898-1	3350 Outside Clear Cover Lens (Diagram 2)	5
KP3044-1	3350 Inside Clear Cover Lens (Diagram 6)	5
KP2930-1	Sweatband Super Soft Knit Cotton	2
KP3045-4	ADF Cartridge – 3350 Series 4 (Diagram 4)	1
9SS27978-153	ADF Holder (Diagram 7)	1
S27978-32	Gasket – Outside Cover Lens Seal (Diagram 3)	1
KP4561-1	Matte Black 3350 Replacement Shell (Diagram 1)	1
KP4470-1	X6 Headgear (Diagram 8)	1
KP3908-1	Pivot Headgear (Diagram 8)	1
KP4562-1	Grind Button Assembly (Diagram 5)	1
KP3047-1	Hard Hat Adapter – Halo Style	1
KP3486-1	Hard Hat Adapter – Slotted Style	1
KP3046-100	Cheater Lens 1.00 Mag	1
KP3046-125	Cheater Lens 1.25 Mag	1
KP3046-150	Cheater Lens 1.50 Mag	1
KP3046-175	Cheater Lens 1.75 Mag	1
KP3046-200	Cheater Lens 2.00 Mag	1
KP3046-225	Cheater Lens 2.25 Mag	1
KP3046-250	Cheater Lens 2.50 Mag	1



REPLACEMENT PARTS
VIKING 3350 SERIES
AUTO-DARKENING HELMETS
WITH 4C TECHNOLOGY

NOTE: SPATTER DAMAGE IS NOT COVERED BY WARRANTY.

Do not use helmets without the correct protective clear lenses installed properly on both sides of the Auto-Darkening Filter cartridge (ADF). The clear lenses supplied with helmets are properly sized to work with this product and substitutions from other suppliers should be avoided.

CUSTOMER ASSISTANCE POLICY

Lincoln Electric® business is manufacturing and selling high quality welding equipment, consumables, and cutting equipment. Our challenge is to meet the needs of our customers and to exceed their expectations. On occasion, purchasers may ask Lincoln Electric® for advice or information about their use of our products. We respond to our customers based on the best information in our possession at that time. Lincoln Electric® is not in a position to warrant or guarantee such advice and to the extent permitted by law assumes no liability, with respect to such information or advice. As a matter of practical consideration, we also cannot assume any responsibility for updating or correcting any such information or advice once it has been given. The provision of information or advice does not create, expand or alter this warranty. Lincoln Electric® is a responsive manufacturer, but the selection and use of specific products sold by Lincoln Electric® is solely within the control of, and remains the sole responsibility of the customer. Many variables beyond the control of Lincoln Electric® affect the results obtained in applying this type of fabrication methods and service requirements. **Subject to Change – This information is accurate to the best of our knowledge at the time of printing.**

The Lincoln Electric Company (Australia) Pty. Ltd.
35 Bryant Street Padstow NSW 2211 Australia
Ph: 1300 728 720 (AU) | 0800 728 720 (NZ)
www.lincolnelectric.com.au

