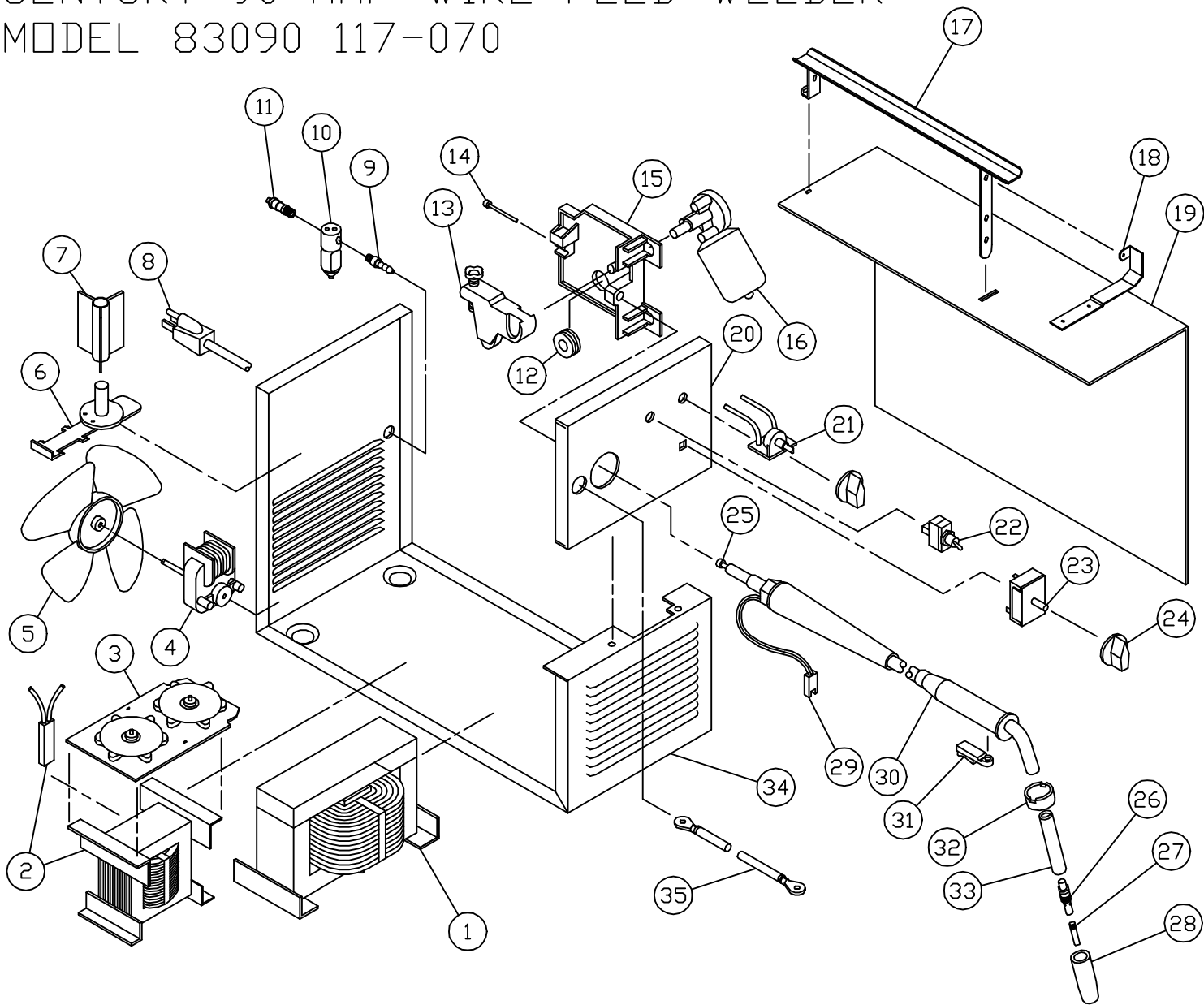


REPLACEMENT PARTS LIST
CENTURY 90 AMP WIRE FEED WELDER
MODEL 83090 117-070

117-070 (83090)



117-070, 83090 - 90 Amp

Item	Lincoln Stock #	Customer #	Description
1	NLA	880-185-888	Main weld transformer
2	NLA	880-184-888	Reactor Coil w/ thermostat
		246-310-000	Thermostat only
3	860-905-666	860-905-666	Rectifier assy.
4	216-087-666	216-087-666	Fan motor
5		316-009-000	Fan blade
6	312-076-666	312-076-666	Wire spindle
7	312-110-666	312-087-666	Spool adapter
8		248-197-666	Power cord
9		253-018-666	Fitting, 1/8"NPT to 3/16" hose barb
10	246-086-666	246-086-666	Gas Solenoid
11		253-038-000	Fitting
12	310-122-500	4323	Drive roller, 0.024 / 0.030 / 0.035
13	Included with #15	880-089-666 312-107-000	Tension arm only
14	Included with #15	239-123-666 239-208-000	Inlet guide tube
15	880-130-666		Quick release drive base assy. (includes 13-15)
16	S27985-4 with 880-130 base hole enlarged & terminals changed	216-089-666	Drive Motor w/gearbox
17	NLA	880-012-010	Handle
18	NLA	412-278-010	Hood hinge
19	NLA	410-568-020	Right side panel
20	NLA	410-802-110	Front panel
21	880-094-666	880-094-666	Wire speed control assy
22		246-210-666 , 216-044-666	Toggle switch

Item	Lincoln Stock #	Customer #	Description
23		246-057-666	Rate switch
24	246-041-666	246-041-666	Knob
25	KP45-40-15 KP1959-1	4331, KP1937-1 4325	Steel liner Teflon liner
26	334-228-000		Gas diffuser
27	KP11-25, KH710	43090, 334-159-300	0.025 Contact Tips (6)
	KP11-30, KH711	43100, 334-160-300	0.030 Contact Tips (6)
28	334-203-000	43480	Steel welding nozzle
	KP21T-62	43300, 334-210-300	Aluminum welding nozzle
	KP21-62-FAS	43290, 334-211-300	Spot welding nozzle
29		860-744-000	Trigger harness
30	238-155-000	238-224-100	10' Mig gun
31	334-221-000	334-221-000	Gun trigger
32		334-219-000 (35-80A-1)	Handle Cap
33		334-217-000 (35-70)	Insulation
34	NLA	410-643-010	Base
35	S11609-18	238-216-666	Ground cable only, 9' w / lugs
	M12033	239-010-102	Ground clamp only (not shown)
Not Shown			
36		218-942-666	Polarity jumper, 6 ga., 6"
37		412-280-666	Copper gun connector
38	131-419-000	131-350-002	Wire tension kit

Made from 2-14-95 (F450029) to 2-4-97 (H086528)

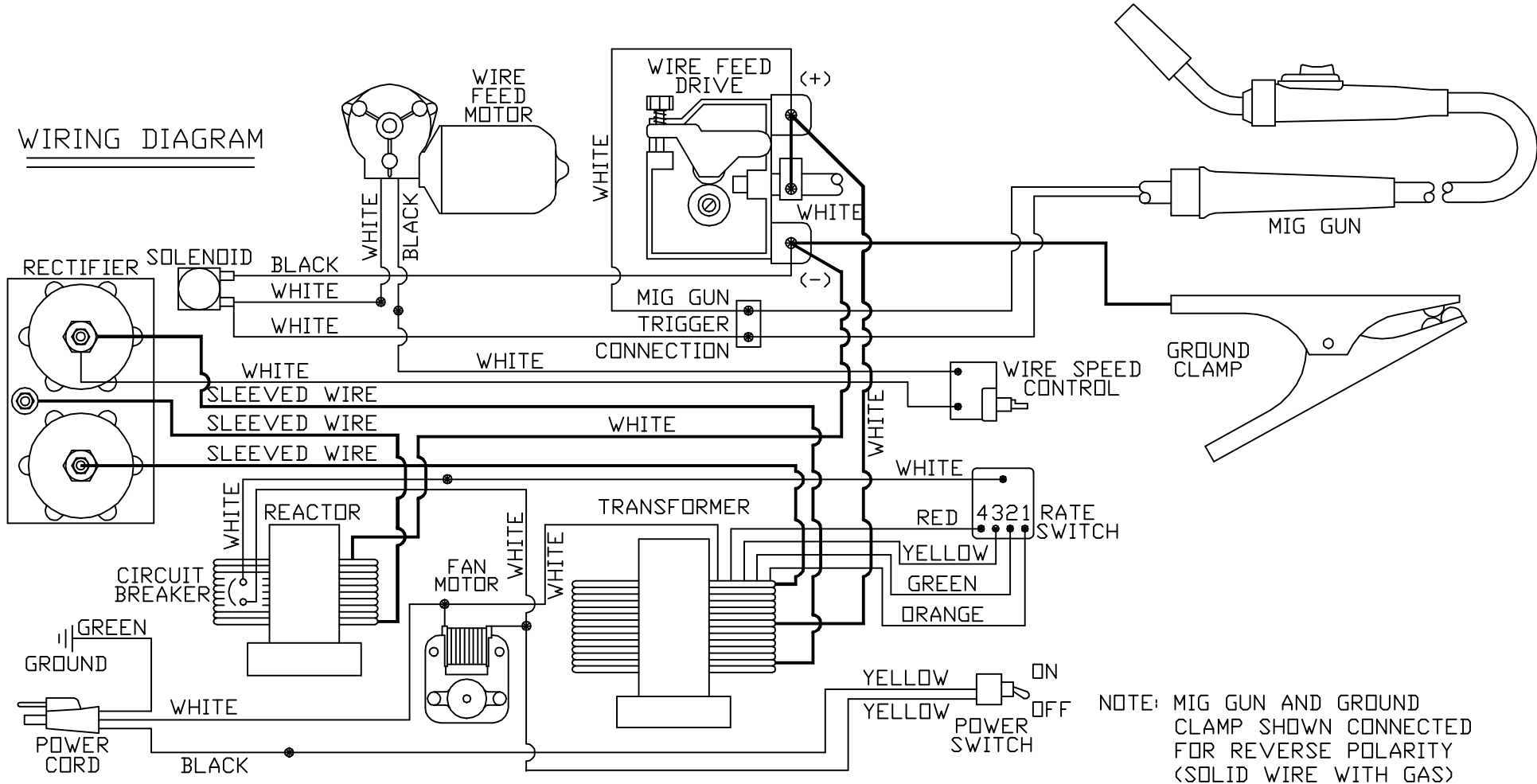
Model	Primary Input	Input Plug	Duty Cycle at Rated Output
117-070	120V, 15 amp	15A	20%

Rated Output	Voltage Settings	Agency Listing	Max Output
90 amps	4	CSA	90 amps

2/18/2010

SERVICING SHOULD BE PERFORMED BY QUALIFIED SERVICE PERSONNEL.

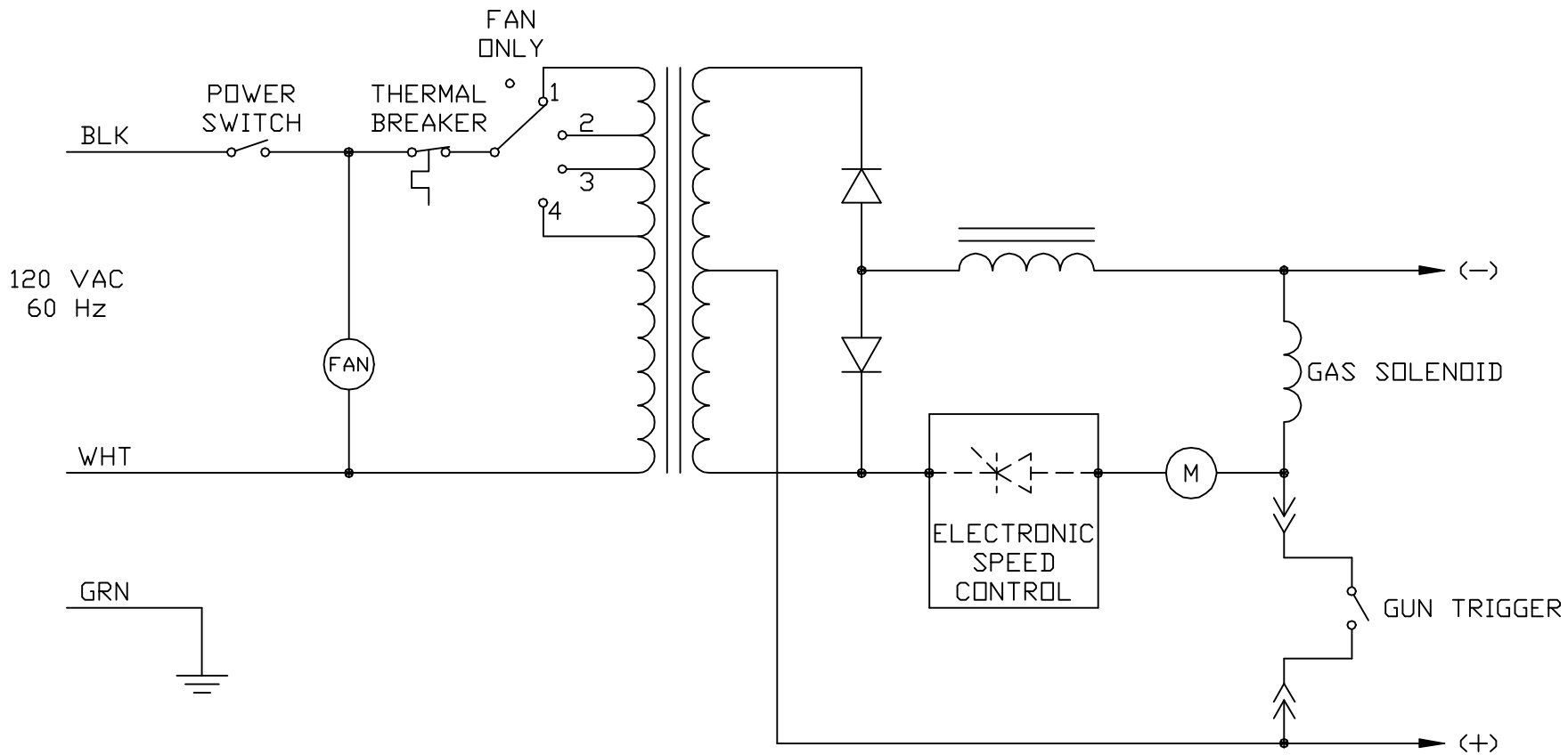
WIRING DIAGRAM



NOTE: MIG GUN AND GROUND CLAMP SHOWN CONNECTED FOR REVERSE POLARITY (SOLID WIRE WITH GAS)

MODEL 83090 117-070

117-070 (83090)



Models **117-070 (83090)**