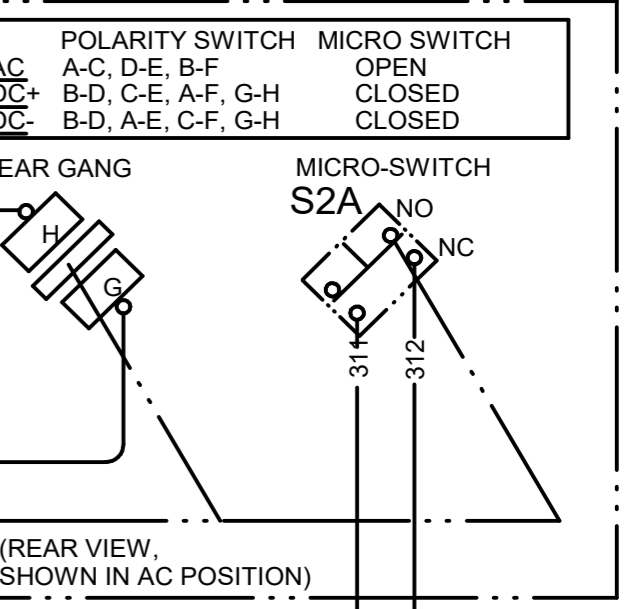
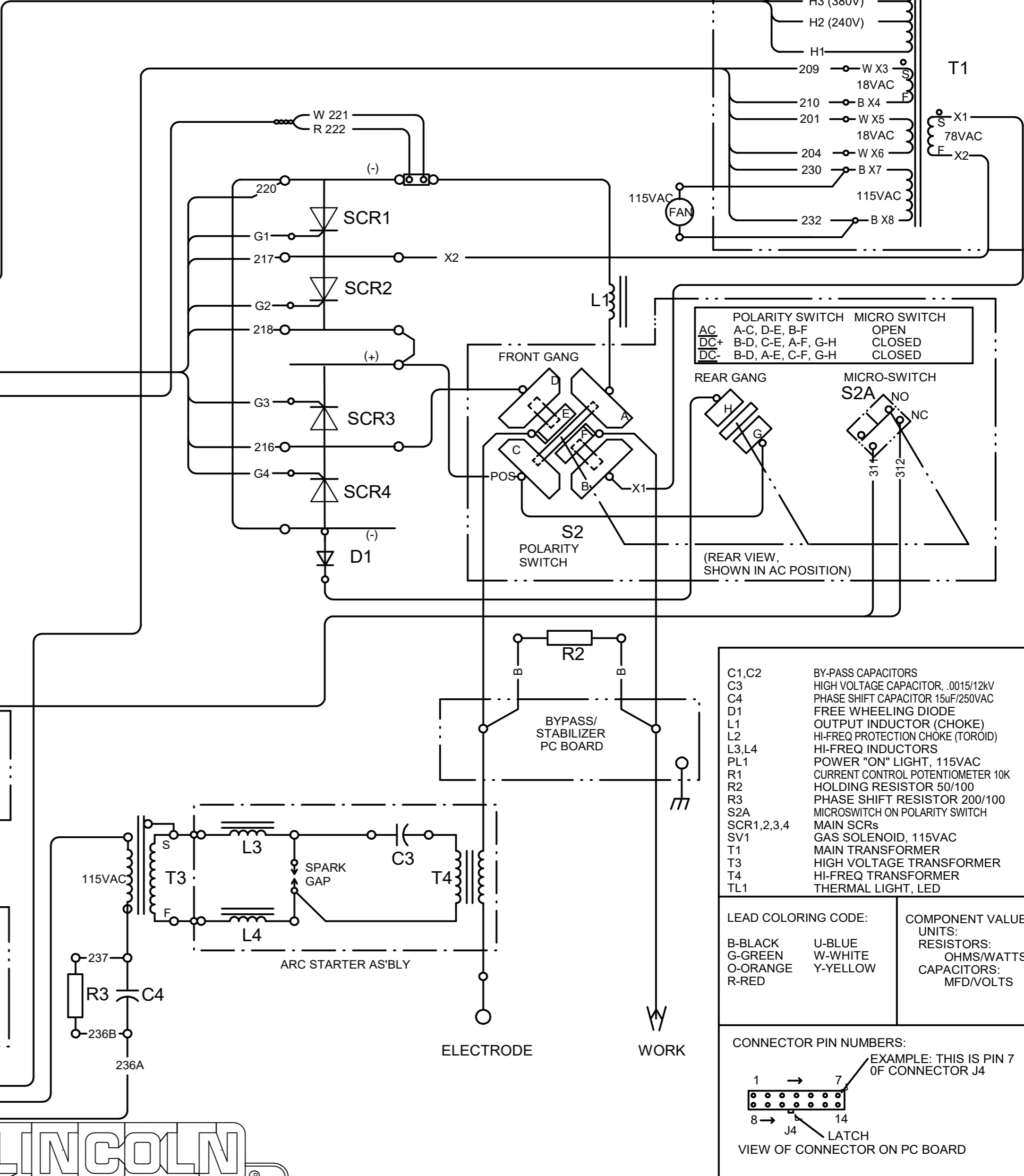
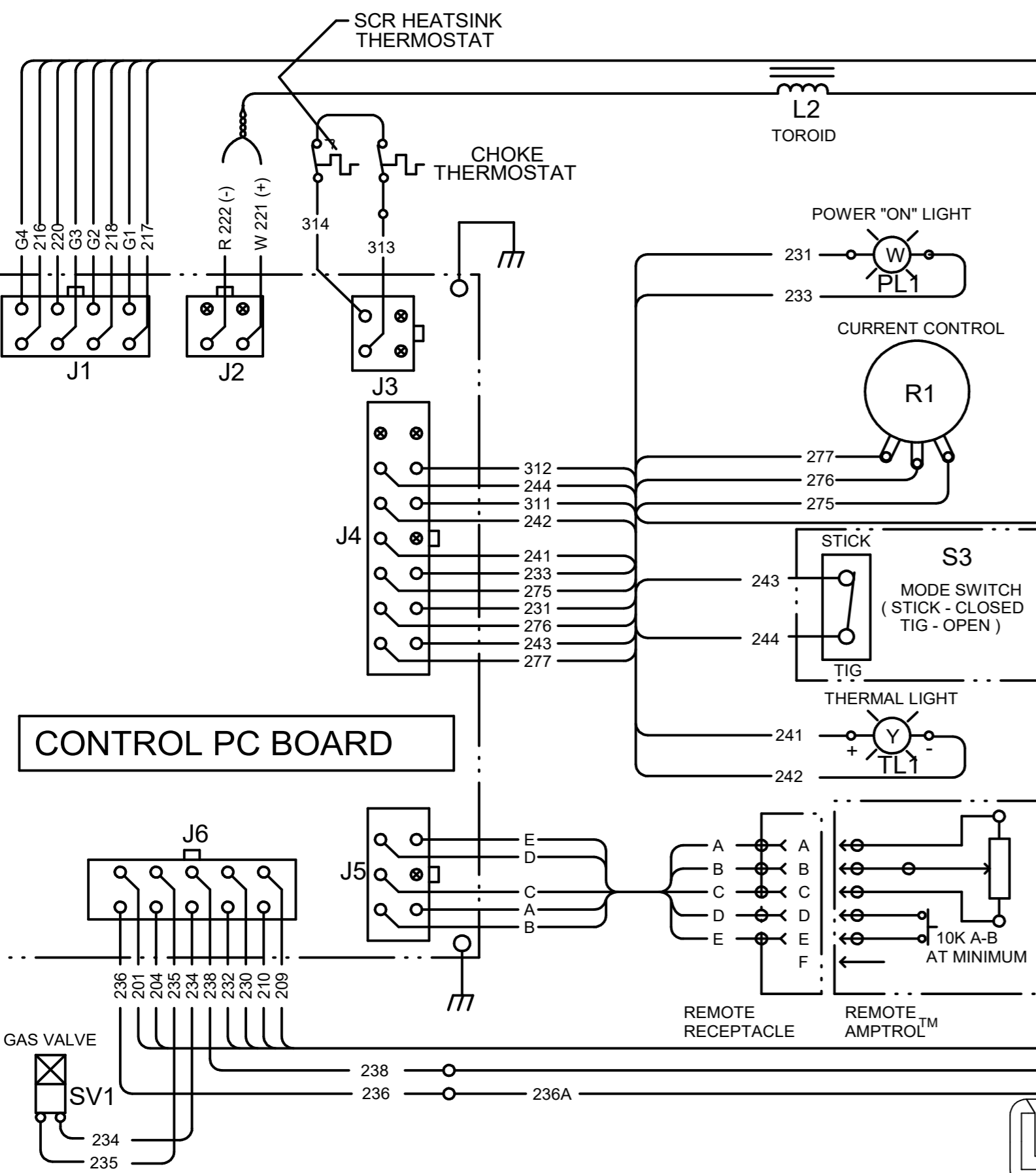
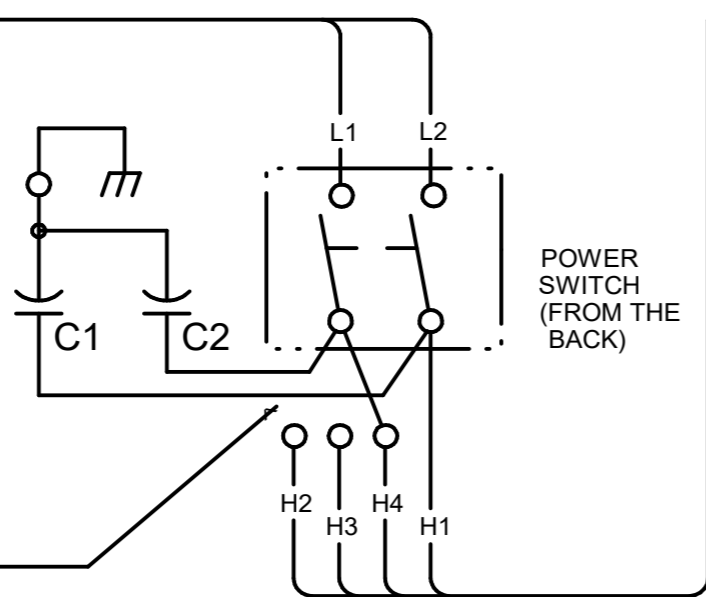


# SQUARE WAVE TIG 175 ( EXPORT ) ( 240/380/415/1/50/60 ) WIRING DIAGRAM L10538 REV-G

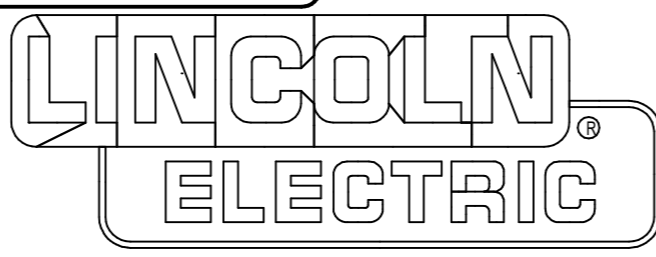
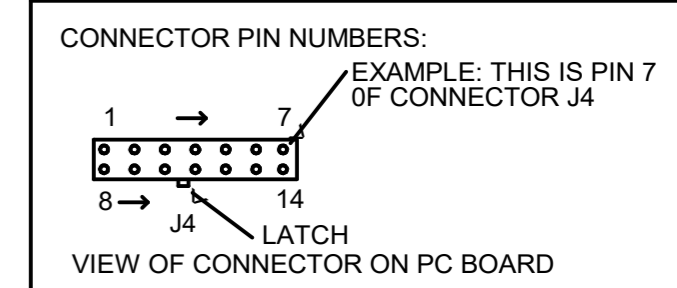
GROUND MACHINE PER NATIONAL AND LOCAL ELECTRICAL CODES. CONNECT THE TWO SUPPLY WIRES TO THE TOP OF THE POWER SWITCH AS SHOWN.

VOLTAGE RECONNECTION	
<b>415 VOLT CONNECTION (AS SHOWN)</b>	CONNECT COPPER LINK FROM POWER SWITCH STUD TO H4. TIGHTEN NUTS.
<b>380 VOLT CONNECTION</b>	CONNECT COPPER LINK FROM POWER SWITCH STUD TO H3. TIGHTEN NUTS.
<b>240 VOLT CONNECTION</b>	CONNECT COPPER LINK FROM POWER SWITCH STUD TO H2. TIGHTEN NUTS.
C1 AND C2 MUST ALWAYS BE CONNECTED ACROSS POWER SWITCH.	



- C1, C2 BY-PASS CAPACITORS
- C3 HIGH VOLTAGE CAPACITOR, .0015/12KV
- C4 PHASE SHIFT CAPACITOR 15uF/250VAC
- D1 FREE WHEELING DIODE
- L1 OUTPUT INDUCTOR (CHOKE)
- L2 HI-FREQ PROTECTION CHOKE (TOROID)
- L3, L4 HI-FREQ INDUCTORS
- PL1 POWER "ON" LIGHT, 115VAC
- R1 CURRENT CONTROL POTENTIOMETER 10K
- R2 HOLDING RESISTOR 50/100
- R3 PHASE SHIFT RESISTOR 200/100
- S2A MICROSWITCH ON POLARITY SWITCH
- SCR1,2,3,4 MAIN SCRS
- SV1 GAS SOLENOID, 115VAC
- T1 MAIN TRANSFORMER
- T3 HIGH VOLTAGE TRANSFORMER
- T4 HI-FREQ TRANSFORMER
- TL1 THERMAL LIGHT, LED

LEAD COLORING CODE:		COMPONENT VALUE UNITS: RESISTORS: OHMS/WATTS CAPACITORS: MFD/VOLTS
B-BLACK	U-BLUE	
G-GREEN	W-WHITE	
O-ORANGE	Y-YELLOW	
R-RED		



CLEVELAND, OHIO U.S.A.