

EZECLEAN FUME EXTRACTION TABLE

EDITION : EN
REVISION : B
DATE : 02-2019

Instruction for use

REF : **8695 4790**

Original Instructions



Thanks for the trust you have expressed by purchasing this equipment, which will give you full satisfaction if you follow its instructions for use and maintenance.

Its design, components specifications and workmanship comply with applicable European directive.

Please refer to the enclosed CE declaration to identify the directives applicable to it.

The manufacturer will not be held responsible where items not recommended by themselves are associated with this product.

For your safety, there follows a non-restrictive list of recommendations or requirements, many of which appear in the employment code.

Finally we would ask you kindly to inform your supplier of any error which you may find in this instructions manual

CONTENTS

A - ASSEMBLY INSTRUCTIONS FOR THE EZECLEAN TABLE 3 -

B - CLEANING OF DROSS AND SLAG FROM TABLE 5 -

C - TABLE MAINTENANCE 7 -

D - CUTTING TABLE SPARE PARTS..... 8 -

PERSONAL NOTES 10 -

REVISIONS

REVISION B

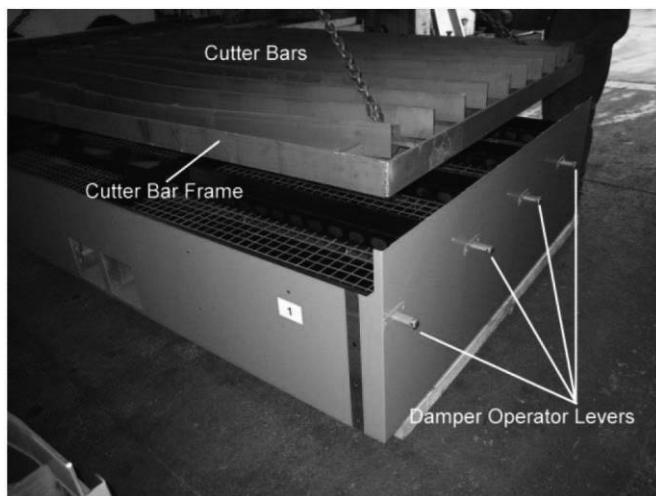
02/19

| DESIGNATION | | PAGE |
|-----------------|--|------|
| To change logos | | |



A - ASSEMBLY INSTRUCTIONS FOR THE EZECCLEAN TABLE

1. Using lifting equipment remove cutter bar frames and dross boxes from each module



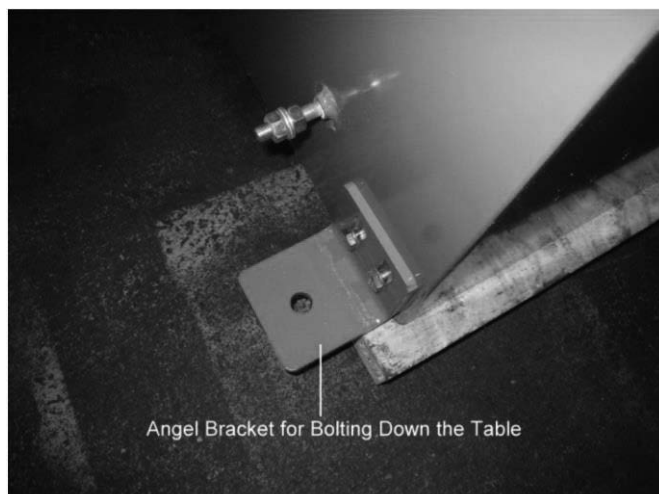
2. Bolt duct outlet transition piece to fan end of the table.



NOTE: THIS IS IMPORTANT TO ENSURE EASY ACCESS TO LOWER BOLTS.

3. Site survey the floor at appropriate module positions and level to within 2mm with steel shim plates.
4. Using lifting equipment place modules down on shims making sure that they run parallel to the machine rails and that the damper operating levers are positioned on the drive side of the machine. Bolt together using M10 x 20mm, bolts provided.

5. When correctly positioned fix table to the floor through angle brackets located on each corner.



6. Mount the switching rail bracket to the machine and adjust making sure that damper levers do not exceed maximum travel as indicated on each lever.

7. Drive the machine slowly over the full length of the table checking each damper is operating correctly and that all operating levers are with in the maximum travel limits.

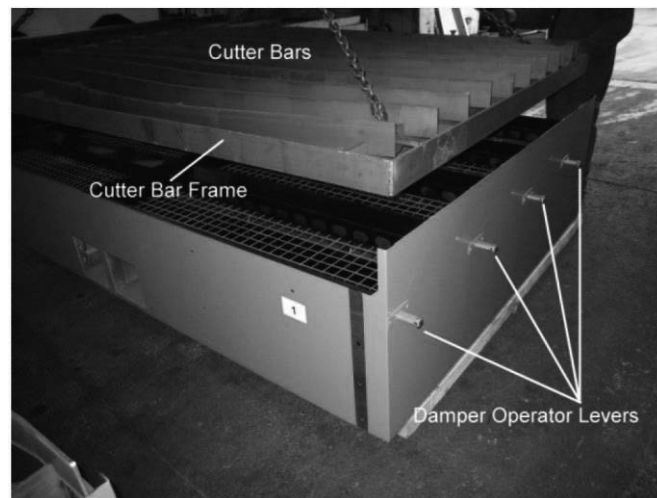
NOTE: OVER TRAVEL MAY RESULT IN DAMAGE & STICKING LEVERS.

8. Replace dross boxes and frames, connect fan and filter unit.

IF IN ANY DOUBT ABOUT INSTALLATION PLEASE CONTACT LINCOLN ELECTRIC

B - CLEANING OF DROSS AND SLAG FROM TABLE

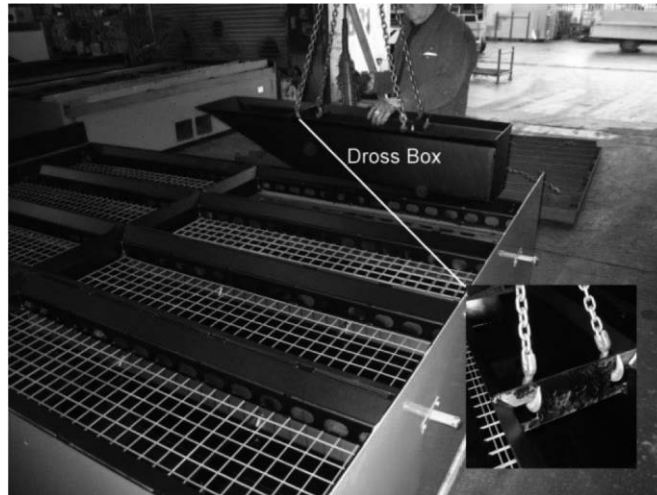
1. Using lifting equipment lift the cutter bar frame from the table (as shown below).



2. Remove the weldmesh panels from the table and scrape off the dross and slag that has collected on them.



3. Using lifting equipment, lift out the dross box using the lifting points as shown below. Empty the dross box into a bin and dispose of slag and dross appropriately. After this has been completed replace the dross box back into the table. Continue this process until all dross boxes along the table have been emptied.



4. After the dross box has been placed back into the table replace the weldmesh panel on top (as shown on the picture in description 2).

5. Inspect the cutter bars in the cutter bar frame (see picture in description 1). Replace any cutter bars that are badly worn and locate the cutter bar frame back in position on the table.

After all of the above is complete you are ready to commence cutting.

C - TABLE MAINTENANCE

Although only a small amount of Table Maintenance is necessary, the following regular checks should be carried out.

1. Inspect each Mechanical Damper Lever by hand to ensure smooth, free running operation.
2. Check Damper Lever End Bearing is easy to turn, if not that bearing will need to be replaced (see section 4 cutting table spare parts list, Part no: 628-RS).
3. Check Damper Bearings for smooth opening. This is done by pushing the lever in; this is to check that the damper in the table opens smoothly.
4. Check Damper Lever Switching Arm for any misalignment and realign as required.



D - CUTTING TABLE SPARE PARTS

Description Part No:

Damper Lever End Bearing 628-RS

Damper Lever Roller Bearing DLB-01
Assembly Unit

Damper Bearing SBP201

[illegible]

Lincoln Electric France S.A.S.
Avenue Franklin Roosevelt 76120 Le Grand Quevilly
76121 Le Grand Quevilly cedex
www.lincolnelectriceurope.com