

ENVISION™

ZEMAN SYSTEMS

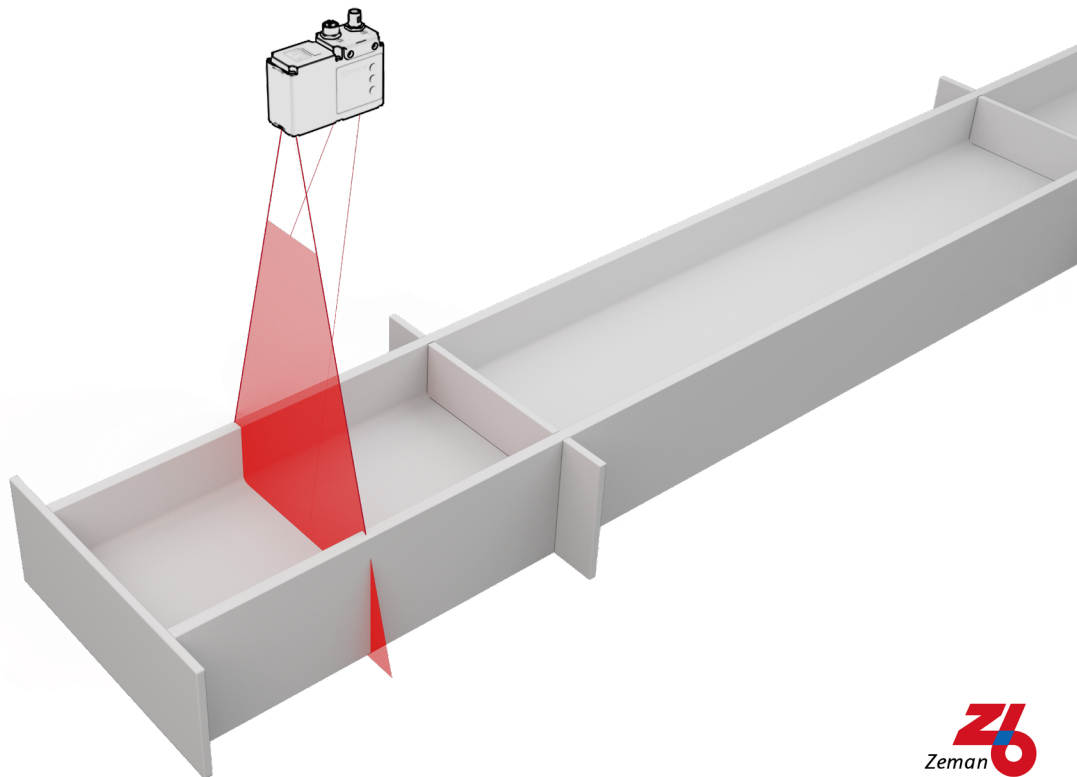


Image is for reference only

SBA SYSTEM | ADD-ON

The ENVISION system is a 3D cutting-edge solution for the digital measurement, analysis, and quality control of steel beams and their components. The system captures precise measurement data to support streamlined production workflows and maintain consistent quality standards. Whether inspecting standard steel profiles or complex components, ENVISION delivers dependable results and integrates smoothly into both automated and manual manufacturing environments.

SYSTEM INCLUDES

- Scanning device
- ProFit Measure 3D Software

BENEFITS

(COMPARED TO THE OLD SYSTEM)

- Reduced measurement effort
- Automatic error detection
- Increased productivity through saved time

OPERATING SOFTWARE

With the Zeman ENVISION system, you receive access to our proprietary **Measure3D Software**, that is accessible within the ProFit™ Manager Application Center.

CONTACT LINCOLN ELECTRIC AUTOMATION - SCHEIFLING



Schlossfeld 5, 8811
Scheifling, Austria



+43 3582 2208-0

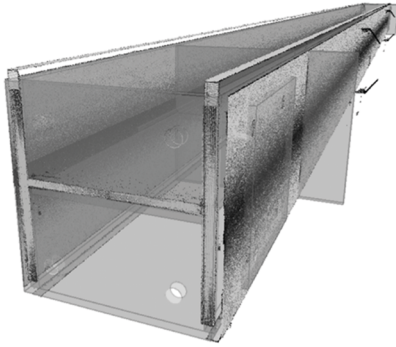


ZemanInfo@LincolnElectric.com

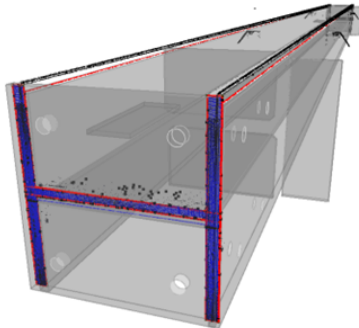


Zebau.com

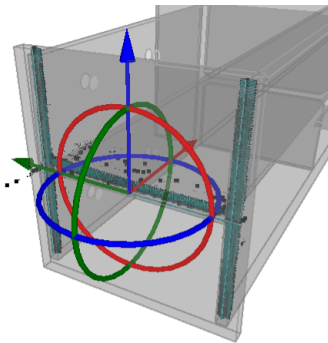
SYSTEM DETAILS



Images are for reference only



Images are for reference only



Images are for reference only

Images are for reference only

TIME SAVING

Once a certain threshold of plates per beam rotation is reached, time can be saved during the assembly on a Zeman SBA System, as only one measurement per beam rotation is required. This eliminates the need for individual measurements of each component, as was previously necessary.

3D-VISUALIZATION

The system offers a fully interactive 3D visualization of the scanned beam, overlaid with CAD data for real-time comparison. Operators can rotate, zoom, and inspect the beam from any angle, making it easy to verify part positions, tolerances, and basic functionality for weld seams.

TOLERANCE MANAGEMENT

The system also introduces advanced tolerance management, with configurable warning and error thresholds. This allows operators to make informed decisions based on real-time data—whether to proceed, adjust, or re-scan.

ENVISION QUALITY CONTROL PROCESS

SCAN

The complete beam with assembled parts is scanned Live-Scan with >1 m/s and a 3D image of the beam is created in the ProFit Measure 3D software.

COMPARE

The measured data is compared with the ideal 3D data of the beam. This matching function graphically overlays the real beam with the 3D drawings of the beam.

CHECK

Auto-detect missing parts: Missing parts can be seen easily in the 3D-view. They are highlighted on their target position with a different color.

MEASURE

Two arbitrary points can be selected from the 3d view, to measure the distance between those points.

WELD-SEAM CHECK

The weld seams are visible in the 3D image, allowing the operator to perform a preliminary inspection.

CUSTOMER ASSISTANCE POLICY

The business of Lincoln Electric is manufacturing and selling high quality welding equipment, automated welding systems, consumables, and cutting equipment. Our challenge is to meet the needs of our customers, who are experts in their fields, and to exceed their expectations. On occasion, purchasers may ask Lincoln Electric for information or technical information about their use of our products. Our employees respond to inquiries to the best of their ability based on information and specifications provided to them by the customers and the knowledge they may have concerning the application. Our employees, however, are not in a position to verify the information provided or to evaluate the engineering requirements for the particular weldment, or to provide engineering advice in relation to a specific situation or application. Accordingly, Lincoln Electric does not warrant or guarantee or assume any liability with respect to such information or communications. Moreover, the provision of such information or technical information does not create, expand, or alter any warranty on our products. Any express or implied warranty that might arise from the information or technical information, including any implied warranty of merchantability or any warranty of fitness for any customers' particular purpose or any other equivalent or similar warranty is specifically disclaimed.

Lincoln Electric is a responsive manufacturer, but the definition of specifications, and the selection and use of specific products sold by Lincoln Electric is solely within the control of, and remains the sole responsibility of the customer. Many variables beyond the control of Lincoln Electric affect the results obtained in applying these types of fabrication methods and service requirements.