

VIKING WELDING HELMET PARTNERSHIP PROGRAM



15% DISCOUNT OFF ALL VIKING™ WELDING HELMETS

Free Showroom Display and Continual Margin Expansion

HOW IT WORKS:

1. Lincoln Electric & Distributor enter into a partnership agreement. See addendum for more information.
2. Distributor orders and maintains placement of the display and display package products in a minimum of 50% of their sold-to store locations.
3. Distributor will automatically receive an additional 15% discount on subsequent orders of all Viking Welding Helmets for 100% of their sold-to store locations.
4. Distributor must submit twice annual audit form confirming continued placement of the display and display package products in 50% or more sold-to store locations.

CHOOSE A PRODUCT PACKAGE

Display Configurations	Package Description	Price
1	Helmets Only	\$4,916
2	Helmets & Helmet Accessories	\$5,038
2B	Helmets & Helmet Access (Wall Mount)	\$5,038

RECEIVE PRODUCT PACKAGE & FREE TWO SIDED DISPLAY:



- Easy to Assemble
- Lightweight Compact Metal Frame
- Angled Brackets Showcase Product At Various Perspectives
- Eye Catching Banners Highlight Product Features & Benefits
- Durable Powder Painted Finish

- Setup & Receive 500 LPR Points
- Display comes with assembly instructions and product planogram for frustration free setup.

Display Configurations

1 WELDING HELMETS



Side 1

Side 2

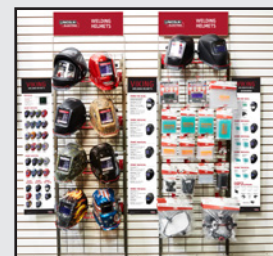
2 HELMETS & ACCESSORIES



Side 1

Side 2

2B HELMETS & ACCESSORIES



Display Package - Ordering Guide

DISPLAY PACKAGE 1: Welding Helmets

Part Number	Product Description	Quantity
K3282-3	VIKING Black 1740	2
K4375-3	VIKING Ignition™ 1740	1
K3023-4	VIKING Black 1840	1
K3173-4	VIKING All American® 1840	1
K3028-5	VIKING BLACK 2450ADV	2
K3099-5	VIKING Graveyard Shift® 2450ADV	1
K4411-5	VIKING White Tail Camo 2450ADV	1

Part Number	Product Description	Quantity
K3034-4	VIKING Black 3350	1
K3034-5	VIKING Black 3350 ADV	1
K3428-4	VIKING Steampunk® 3350	1
K4440-4	VIKING Hot Rodders® 3350	1
K4034-4	VIKING Code Red® 3350	1
K3683-4	VIKING Daredevil 3350	1
K3540-3	VIKING 3250D FGS	1
K4390-1	Gear Display - Configuration 1	1

DISPLAY PACKAGE 2A & 2B: Welding Helmets & Accessories

Part Number	Product Description	Quantity
K4375-3	VIKING Ignition 1740	1
K3282-3	VIKING Black 1740	1
K3173-4	VIKING All American® 1840	1
K3028-5	VIKING BLACK 2450ADV	1
K4411-5	VIKING White Tail Camo™ 2450ADV	1
K3034-4	VIKING Black 3350	1
K4034-4	VIKING Code Red® 3350	1
K3428-4	VIKING Steampunk® 3350	1
K3034-5	VIKING Black 3350 ADV	1
K3540-3	VIKING 3250D FGS	1
KP3775-1	VIKING 2X4C Series - Variable Shade 8-13	3
KP3778-1	VIKING 2X4C Series - Fixed Shade 10	3
KP2930-1	VIKING Sweatband	8
KP3283-1	VIKING 1740 Inside Clear Cover Lens	25
KP3043-1	VIKING 1740/1840 Outside Cover Lens	50
KP2897-1	VIKING 1840 Inside Cover Lens	25

Part Number	Product Description	Quantity
KP2931-1	VIKING 2450 Inside Cover Lens	20
KP3044-1	VIKING 3350 Inside Cover Lens	35
KP2898-1	VIKING 2450/3350 Outside Cover Lens	100
KP3700-1	FGS 3250D - Outside Cover Lens	30
KP3701-1	FGS 3250D - Inside Cover Lens	16
KP3702-1	FGS 3250D - Clear Anti-Fog Grind Shield	5
KP3486-1	VIKING Slotted Style Hard Hat Adapter	3
KP3047-1	VIKING Halo Style Hard Hat Adapter	4
KP4470-1	VIKING X6 Headgear™ Kit	3
KP3046-150	Cheater Lens 1.50	4
KP3046-200	Cheater Lens 2.00	6
KP3046-250	Cheater Lens 2.50	6
KP4491-1	CR2450 Lithium Battery	8
KP3729-1	Helmet Bib - Split Leather w/ Press Fit Seal	3
K4391-1	Config. 2A - Floor Standing OR	1
K4392-1	Config. 2B - Wall Mounted	

**Helmet Graphics can be substituted but they must be within the same VIKING Series. I.E. –
If you're substituting a 3350 Series Graphic, you must choose a separate 3350 Series Graphic.**

All products and quantities listed in the tables must be ordered to receive your Two Sided Display.

CUSTOMER ASSISTANCE POLICY

The business of Lincoln Electric is manufacturing and selling high quality welding equipment, automated welding systems, consumables, and cutting equipment. Our challenge is to meet the needs of our customers, who are experts in their fields, and to exceed their expectations. On occasion, purchasers may ask Lincoln Electric for information or technical information about their use of our products. Our employees respond to inquiries to the best of their ability based on information and specifications provided to them by the customers and the knowledge they may have concerning the application. Our employees, however, are not in a position to verify the information provided or to evaluate the engineering requirements for the particular weldment, or to provide engineering advice in relation to a specific situation. Accordingly, Lincoln Electric does not warrant or guarantee or assume any liability with respect to such information or communications. Moreover, the provision of such information or technical information does not create, expand, or alter any warranty on our products. Any express or implied warranty that might arise from the information or technical information, including any implied warranty of merchantability or any warranty of fitness for any customers' particular purpose or any other equivalent or similar warranty is specifically disclaimed.

Lincoln Electric is a responsive manufacturer, but the definition of specifications, and the selection and use of specific products sold by Lincoln Electric is solely within the control of, and remains the sole responsibility of the customer. Many variables beyond the control of Lincoln Electric affect the results obtained in applying these types of fabrication methods and service requirements.

The Lincoln Electric Company
22801 St. Clair Avenue · Cleveland, OH · 44117-1199 · U.S.A.

www.lincolnelectric.com