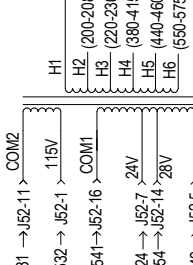
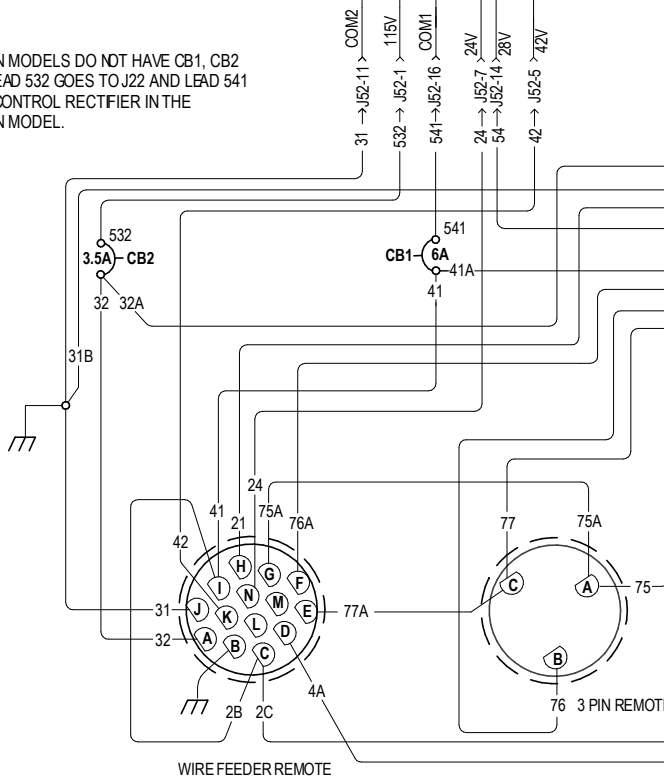


CE COLORS IN PARANTHESIS

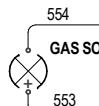
AUXILIARY TRANSFORMER



CONSTRUCTION MODELS DO NOT HAVE CB1, CB2 OR REMOTE. LEAD 532 GOES TO J22 AND LEAD 541 GOES TO THE CONTROL RECTIFIER IN THE CONSTRUCTION MODEL.



AMPHENOLS ARE VIEWED FROM FRONT OF MACHINE



REMOTE BOARD



SWITCH BOARD

RECONNECT SWITCH

SNUBBER BOARD

CONTROL BOARD

POWER BOARD

SPI CIRCUIT

SPI CIRCUIT

SPI CIRCUIT

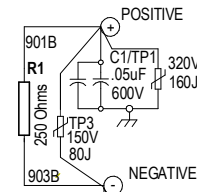
WELD TERMINALS

OUTPUT CONTROL

DISPLAY PANEL

MODE PANEL

ADVANCED PROCESS PANEL



SUPPRESSOR DETAIL PRIOR TO OCT. 2013

J60-A, J60-B

J61

J1, J6, J7, J332, J333, P52

J31, J33, J34, J37

J2, J5, J11, J22, J41, J311, P55

J9, J42, P53

J8, J20, J21

J4, J43, J331

J10A, J10B

CONNECTOR CAVITY NUMBERING SEQUENCE (VIEWED FROM COMPONENT SIDE OF BOARD)

LEGEND: ALL MACHINES, OPTION, COMPONENT OUTLINE

ELECTRICAL SYMBOLS PER E1537

NOTES:

- N.A. PC board components shown for reference only. All components are not shown.
N.D. The SPI circuit pin assignments are shown at the Control PCB. This pin assignment is the same for all SPI connectors.
N.E. The remote UI PCB always responds as a remote SPI board. It can also respond as a Status and/or Mode SPI board. Connecting pins 1 & 2 of J333 together will enable the Remote UI PCB to respond as a Status SPI. Connecting pins 11 & 14 of J332 together will enable the Remote UI PCB to respond as a Mode PCB.

Table with columns: PROPRIETARY & CONFIDENTIAL, EQUIPMENT TYPE (INVERTER EX350I), SUBJECT (MACHINE SCHEMATIC), PROJECT NUMBER (CRM47660-B), and other technical specifications.