



WELDLINE[®]

by Lincoln Electric

WELDING HELMETS

MORE COMFORT & SAFETY FOR WELDERS

www.lincolnelectric.eu

EURO & VIKING Series Comparison

Tailored Features

Biggest

Bigger

Normal



Specifications	FGS™ Series	3350 Series	2450 Series	Eurowave 3.0 LS Black / Streetart	Eurospeed LS Black / Weld play	Chameleon 3V0 Streetart / Welding Legend / Squad	Euroone
Variable Shade Range/Control	5-13 Internal	5-13 Internal	5-13 Internal	8-13 Internal	9-13 Internal	8-13 Internal	9-13 External
Optical Clarity Rating	1/1/1	1/1/1	1/1/1	1/1/1	1/1/2	1/1/2	1/1/2
Auto-Darkening Viewing Area	108 x 75 MM	95 x 85 MM	97 x 62 MM	97 x 60mm	98 x 44 mm	97 x 40 mm	98 x 44 mm
Grind Mode, Shade / Control	DIN4 / Internal	DIN4 / External	DIN4 / External	DIN3/External	DIN3,5 / Internal	DIN3 / No	DIN3,5 / External
Delay Control Dark to Light (sec)	0,0-1,0 Digital Adjustment	0,1-1,0 s fully adjustable	0,1-1,0 s fully adjustable	0,1-1,0 s fully adjustable	0,1-1,0 by infinitely dial knob	0,1-1,0 by infinitely dial knob	0,1-1,0 by infinitely dial knob
Number of Arc Sensors	4	4	4	4	2	2	2
Weight (g)	793	606	595	560	475	445	490
Lens Switching Speed (sec)	1/25,000	1/25,000	1/25,000	1/25,000	1/25,000	1/12,000	1/16,000
Optic Technology	4C Technology	4C Technology	4C Technology	Light Shade Technology	Light Shade Technology	Standard	Standard
Magnifying "Cheater" Capable Lens	Yes	Yes	Yes	Yes	No	Yes	No
TIG Amp Rating	≥2 A /DC ≥2 A /AC	≥2 A /DC ≥2 A /AC	≥2 A /DC ≥2 A /AC	≥2 A /DC ≥2 A /AC	≥5 A /DC ≥5 A /AC	≥5 A /DC ≥5 A /AC	≥10 A /DC ≥10 A /AC
Light Sensitivity Control	Digital Display Control	Continuous	Continuous	Continuous	by infinitely dial knob	by infinitely dial knob	by infinitely dial knob
Bonus accessories	Side Windows + Planch of stickers + Bag + Bandana	Planch of stickers + Bag + Bandana	Planch of stickers + Bag + Bandana	-	Planch of stickers	-	-
Cartridge Size (mm)	122 x 154,5 mm	114 x 133 mm	114 x 133 mm	114 x 133 mm	110 x 90 mm	110 x 90 mm	110 x 90 mm
Auto-Darkening Viewing Area (mm²)	8100	8075	6014	5820	4312	3880	4312
Headgear Type	UPGRADED FOUR AXIS PIVOT	X6 AXIS PIVOT	X6 AXIS PIVOT	FOUR AXIS PIVOT	FLEXSPEED LS + cushion	FLEX3V0	FLEXONE
Battery Type	Solar cell + 2 CR2450 Replaceable Batteries	Solar cell + 2 CR2450 Replaceable Batteries	Solar cell + 2 CR2450 Replaceable Batteries	Solar cell + 2xCR2450 replaceable lithium battery	Solar cell + Battery replaceable (2xAAA Alkaline batteries)	Solar cell + 2 alkaline battery	Solar cells, no battery change required
Graphic options	1	4	2	2	3	3	1
Value Proposition	Best In Class Specifications With Added Productivity & Safety Features	Best in Class Specifications & Features	Enhanced Versatility	Light state DIN3	Good value	Efficient value solution with Optical class improved and variant graphics	Efficient value solution with grinding mode

LINCOLN ELECTRIC WELDING HELMET **EURO** & **VIKING** SERIES



**TIG AMP RATING
5 AMPS AC / DC**

**DIN: 8-13
AUTO-DARKENING
SHADE RANGE**

WARRANTY
18
MONTH



**EXTERNAL LOW
PROFILE GRIND
CONTROL**

**TIG AMP RATING
2 AMPS AC / DC**

WARRANTY
3
YEARS

**DIN: 5-13
AUTO-DARKENING
SHADE RANGE**

**SUPERIOR OUT DOOR
PERFORMANCE**



Light Shade technology

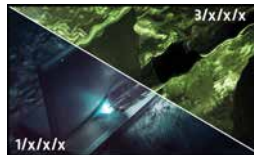
See More! Weld Better!

- ◆ Provides a better, clearer view of the welding puddle
- ◆ Improves visibility
- ◆ Reduces eye strain



1/1/1 Optical clarity

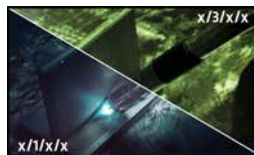
Eliminating Distortion



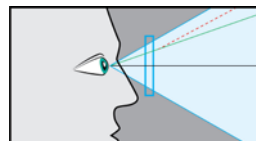
Uniform Shade



Removing Blurriness



Consistent Angle Performance



Consistent Shade at all Angles



4C Lens technology

- 1 - Clarity - Optical Clarity 1/1/1
- 2 - Color - Real Color View
- 3 - Carat - Light Weight
- 4 - Cut - Even Shade From Any Angle



VIKING™ 3250D FGS™ SERIES

NEW

VIKING
WELDING HELMETS

Welding Processes:

Stick, TIG, Pulsed TIG, MIG,
Pulsed MIG, Flux-Cored, Gouging,
Grinding



WARRANTY
3
YEARS

lens
technology
4C™

CE



Auto-Darkening Lens Specs

Variable shades



Low TIG
amps rated



Grind mode /
Shade control



Lens switching
speed



Arc sensors



Optical class



Comfort



Viewing area



Enhanced Outdoor
Performance



VIKING™ 3250D FGS™
K3540-3-CE

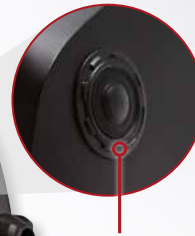
VIKING™ 3350 SERIES 4

NEW

VIKING
WELDING HELMETS

Welding Processes:

Stick, TIG, Pulsed TIG, MIG,
Pulsed MIG, Flux-Cored,
Gouging, Grinding.



Low-profile external grind button provides seamless transition between weld & grind mode



**VIKING™ 3350
Daredevil**
K3683-4-CE



**VIKING™ 3350
BlackMat**
K3034-4-CE

**VIKING™ 3350
Motorhead™**
K3100-4-CE



**VIKING™ 3350
Mojo™**
K3101-4-CE

WARRANTY
3
YEARS

lens
technology
4C™

CE

Auto-Darkening Lens Specs

Variable shades



Low TIG amps rated



Grind mode / Shade control



Lens switching speed



Arc sensors



Optical class



Comfort



Viewing area



Enhanced Outdoor Performance



VIKING™ 2450 SERIES 4

NEW



Welding Processes:

Stick, TIG, Pulsed TIG, MIG, Pulsed MIG, Flux-Cored, Gouging, Grinding.

WARRANTY
3
YEARS



Low-profile external grind button provides seamless transition between weld & grind mode

Auto-Darkening Lens Specs

Enhanced Outdoor Performance



Variable shades



Low TIG amps rated



Grind mode / Shade control



Lens switching speed



Arc sensors



Optical class



Comfort



Viewing area



VIKING™ 2450 Black

K3028-4-CE



VIKING™
Heavy Metal®
K3029-4-CE

EUROWAVE 3.0 LS

NEW

Welding Processes:

Stick, TIG, Pulsed TIG, MIG, Pulsed MIG, Flux-Cored, Gouging, Plasma Cutting, Grinding.



External grinding mode



WARRANTY
2
YEARS



Auto-Darkening Lens Specs

- Variable shades: 8 13
- Low TIG amps rated: 2 amps (DC) / ≥ 2 amps (AC)
- Grind mode / Shade control: DIN 3
- Lens switching speed: 1 / 25,000 sec
- Arc sensors: 4
- Optical class: 1 / 1 / 1
- Comfort: [Icon of a helmet with a feather]
- Viewing area: 97 mm x 60 mm

EUROWAVE 3.0 LS
Streetart
W403901

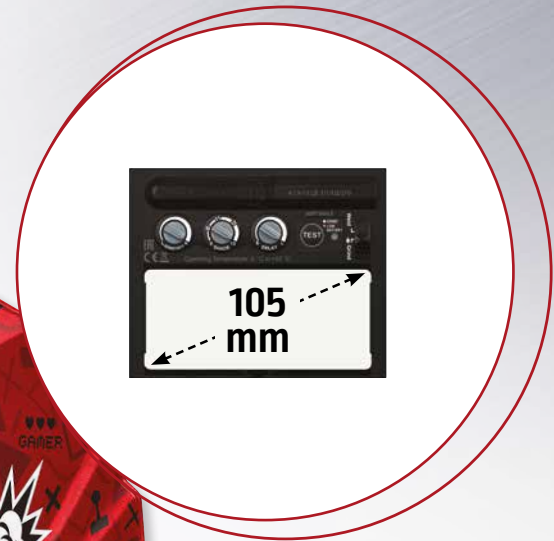


EUROWAVE 3.0 LS
Black
W403900

EUROSPEED LS

Welding Processes:

Stick, TIG, Pulsed TIG,
MIG, Pulsed MIG,
Flux-Cored, Gouging,
Plasma Cutting, Grinding.



WARRANTY
18
MONTH

Auto-Darkening Lens Specs

Variable shades



Grind mode / Shade control



Lens switching speed



Viewing area



Comfort



Arc sensors



Optical class



EUROSPEED LS
Weld Play
W000403824-6

EUROSPEED LS
W000403824

CHAMELEON 3VO

Welding Processes:

Stick, MIG

WARRANTY

1
YEAR



CHAMELEON
3VO Welding
Legend

W403548

CHAMELEON
3VO Squad

W403547

CHAMELEON
3VO Streetart

W000403546

Auto-Darkening Lens Specs

Variable shades



Arc sensors



Optical class



Viewing area



Battery



Lens switching speed



EUROONE

Welding Processes:

Stick, MIG, Plasma
Cutting, Grinding.

WARRANTY

1
YEAR



External
grinding mode



EUROONE
W000403823

Auto-Darkening Lens Specs

- Comfort
- Arc sensors
- Optical class
- Viewing area
- Variable shades
- Grind mode / Shade control
- Lens switching speed

FEATURES

FLEXone

- 1 Setting on the top
- 2 Removable sweatband
- 3 Rack setting



X4 PIVOT

- ◆ Soft, Padded front headband helps eliminate pressure points
- ◆ Two adjustable top head straps help distribute weight for increased comfort
- ◆ Ratchet adjustable rear headband allows operator to set tightness
- ◆ Turn and slide forward and backward adjustments



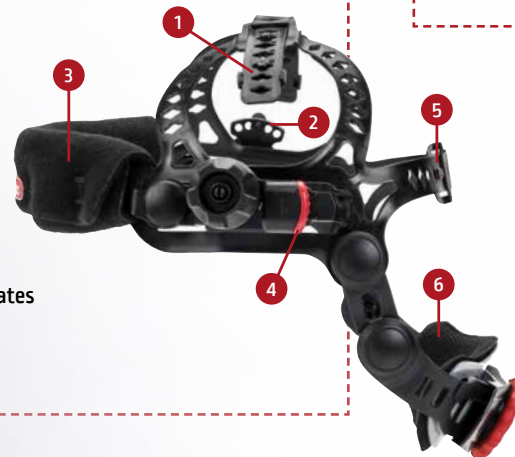
FLEXspeed

- 1 Setting on the top
- 2 Removable sweatband
- 3 Comfort cushion
- 4 Rack setting



X6 HEADGEAR - SUPERIOR COMFORT

- 1 Adjustable, form fitting top head supports and distributes weight to optimize balance
- 2 Orientation adjustment pin for optimal resting position
- 3 Rotatable front headband for personalised support and fit
- 4 Innovative and easy to use forward and backward adjustments
- 5 Strategically positioned rear headband improves balance
- 6 Unique flexible backpad eliminates common pressure point



OPTIONAL ACCESSOIRES

NEW

Compatible with all Lincoln Electric helmets and most competitive models

LINCOLN ELECTRIC Split leather helmet bib with Press Fit Silicone Seal



Split leather helmet bib
KP3729-1



LINCOLN ELECTRIC Grain leather helmet bib with Press Fit Seal



Grain Leather Helmet Bib
KP3730-1

VIKING Cheater Lens*



To order	
Cheater lens 1.00 magnification	KP3046-100
Cheater lens 1.25 magnification	KP3046-125
Cheater lens 1.50 magnification	KP3046-150
Cheater lens 1.75 magnification	KP3046-175
Cheater lens 2.00 magnification	KP3046-200
Cheater lens 2.25 magnification	KP3046-225
Cheater lens 2.50 magnification	KP3046-250

Magnifying glass EN 166**

Diopter	108 x 51 mm or 105 x 50 mm
+1.0	W000335031
+1.5	W000335032
+2.0	W000335033
+2.5	W000335034

For some precision welding, magnifying the work zone is necessary. These lenses must be used with coloured filtering glasses.



** These magnifying glasses can be used with CHAMELEON 3V0, CHAMELEON 4V+ LS, EUROLUX LS, ZEPHYR 4500 LS and FLIP'AIR 4500 LS

DUFFLE BAG



TO ORDER
2019-STUDENTSET



TO ORDER
SPORTBAG

OPTIONAL ACCESSOIRES

Compatible with all Lincoln Electric helmets and most competitive models

Led light



LINCOLN ELECTRIC Flame retardant cotton extended protection for head with Press Fit silicone Seal



LINCOLN ELECTRIC Helmet Backpack

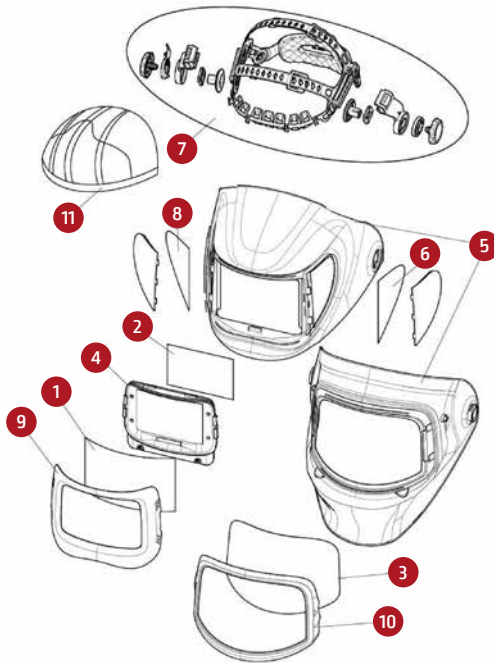
HELMET BACKPACK

WP202203

REPLACEMENT PARTS



FGS

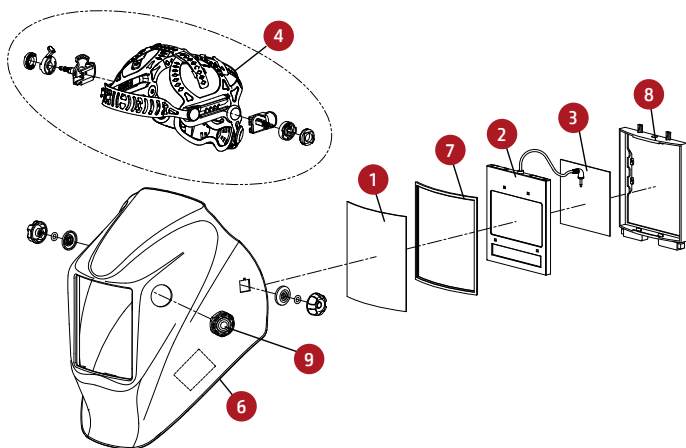


FGS

To order	Description	Qty	Reference
1	Outside Cover lens (158.2 x 100 x 1.2 mm)	1	KP3700-1
2	Inside Clear lens (108.3 x 78.3 x 1 mm)	1	KP3701-1
3	Grind Shield Clear lens (221.4 x 133.4 x 1.2 mm)	1	KP3702-1
4	3250D FGS ADF	1	KP3703-3
5	Replacement Shell (FGS Series Welding Helmet) (including Side Window installed)	1	KP3704-1
6	Side Lens Cover (1 pair)	1	KP3705-1
7	Headgear (including sweatband)	1	KP3706-1
8*	Sweatband (Pkg Qty: 2)	1	KP2930-1
9	Front lens holder	1	95S32652-10
10	Grind Shield lens holder	1	95S32652-3
11	Head cover	1	KP3709-1

*Not illustrated

VIKING™ 3350

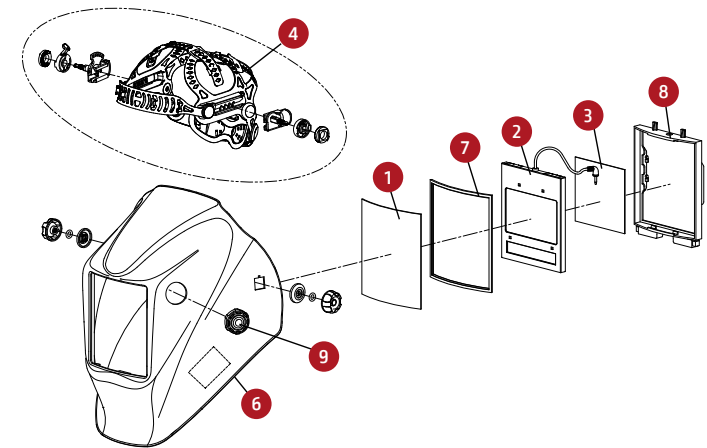


VIKING™ 3350

To order	Description	Qty	Reference
1	Outside clear lens (Pkg. Qty: 5) Oculars safety lenses 133.0 x 114.0 x 1.0 mm	1	KP2898-1
2	ADF cartridge for VIKING™ 3350 4C (S27978-151)	1	KP3045-4
3	Inside clear lens (Pkg. Qty: 5) Oculars safety lenses 94.7 x 89.7 x 1.0 mm	1	KP3044-1
4	Headgear assembly (including sweatband & Retrofit washer)	1	KP4470-1
5*	Sweatband (Pkg. Qty: 5)	1	KP2930-1
6	Replacement shell (VHT1)	1	KP4561-1
7	Outside clear lens seal	1	S27978-32
8	ADF holder	1	S27978-153
9	Grind button assembly	1	KP4562-1
10*	CR2450 replacement battery	1	KP4491-1
11*	Headgear cushion back pad (Pkg. qty. 2)	1	KP4541-1

*Not illustrated

VIKING™ 2450

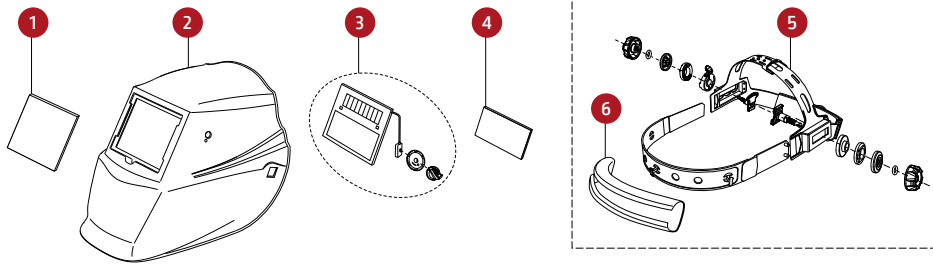


VIKING™ 2450

To order	Description	Qty	Reference
1	Outside clear lens (Pkg. Qty: 5) Oculars safety lenses 133.0 x 114.0 x 1.0 mm	1	KP2898-1
2	ADF cartridge for VIKING™ 2450 4C (S27978-150)	1	KP2932-4
3	Inside clear lens (Pkg. Qty: 5) Oculars safety lenses 98.5 x 66.5 x 1.0 mm	1	KP2931-1
4	Headgear assembly (including sweatband & retrofit washer)	1	KP4470-1
5*	Sweatband (Pkg. Qty: 2)	1	KP2930-1
6	Replacement shell (VHT1)	1	KP4560-1
7	Outside clear lens seal	1	S27978-32
8	ADF holder	1	S27978-153
9	Grind button assembly	1	KP4562-1
10*	CR2450 replacement battery	1	KP4491-1
11*	Headgear cushion back pad (Pkg. Qty: 2)	1	KP4541-1

REPLACEMENT PARTS

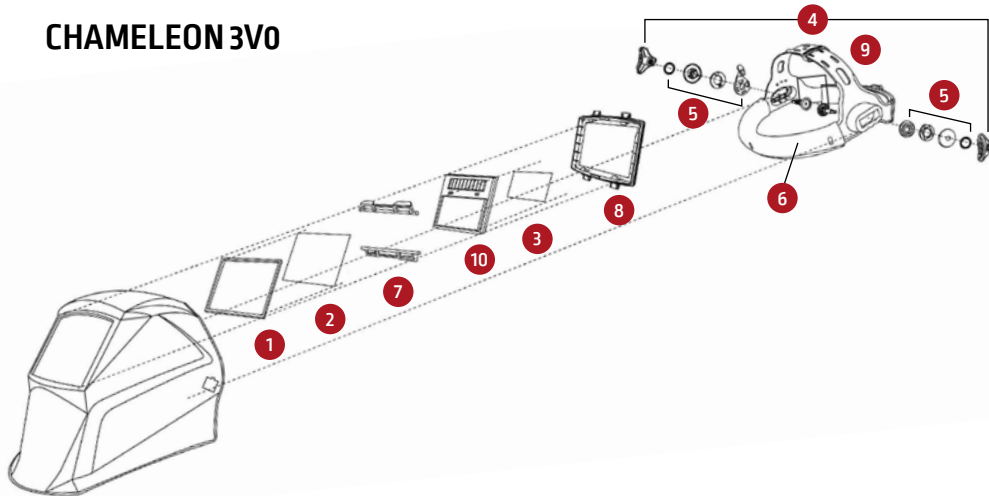
EUROONE



EUROONE

To order		
Description	Qty	Reference
1 - Front Cover Lens	1	W000404065
2 - Shell (Welding Mask)	1	W000404066
3 - Auto-Darkening Filter	1	W000404067
4 - Inside Cover Lens	1	W000404068
5 - Headgear Assembly (Including Sweatband)	1	W000404069
6 - Sweatband	1	W000404073

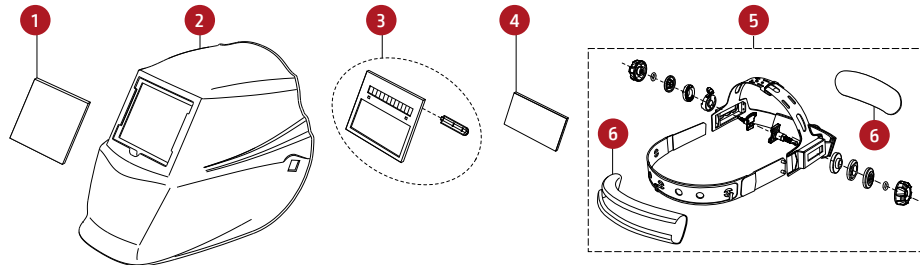
CHAMELEON 3VO



CHAMELEON 3VO

To order	
Description	Reference
1 - Gasket front cover lens	W000261985
2 - Front cover lens	W000261983
3 - Inside cover lens	W000335163
4 - Headgear	W000261986
5 - Headgear adjusting kit	W000261987
6 - Sweatband	W000261999
7 - Cartridge holder hook	W000261990
8 - Cartridge holder	W000261989
9 - Comfort cushion	W000261991
10 - Cell	W000377928

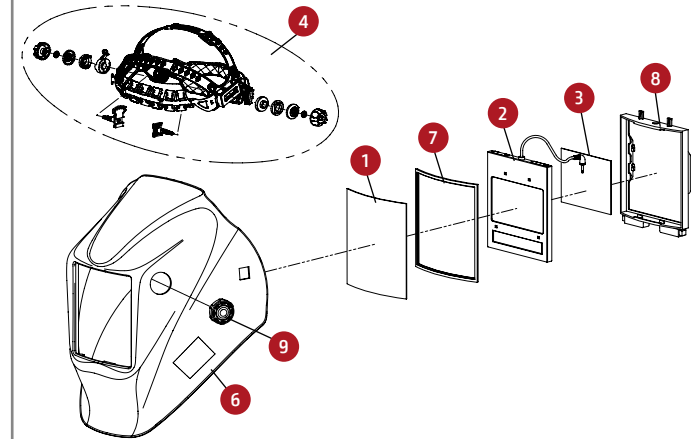
EUROSPEED LS



EUROSPEED LS

To order		
Description	Qty	Reference
1 - Front Cover Lens	1	W000404065
2 - Shell (Welding Mask)	1	W000404096
3 - Auto-Darkening Filter	1	W000404097
4 - Inside Cover Lens	1	W000404068
5 - Headgear Assembly (Including Sweatband)	1	W000404098
6 - Sweatband	1	W000404073

EUROWAVE 3.0 LS



EUROWAVE 3.0 LS

To order		
Description	Reference	
1 - Outside clear lens (Pkg. Qty: 5) Oculars safety lenses 133.0 x 114.0 x 1.0 mm	KP2898-1	
2 - ADF cartridge for EuroWave 3.0LS	KPW4039-2	
3 - Inside clear lens (Pkg. Qty: 5) Oculars safety lenses 98.5x66.5x1.0 mm	KP2931-1	
4 - Headgear assembly for EuroWave 3.0LS (including sweatband)	KPW4039-1	
5 - Sweatband (Pkg. Qty: 2)	KP2930-1	
6 - EuroWave 3.0LS replacement shell BLACK (VH1)	KPW4039-3	
7 - EuroWave 3.0LS replacement shell STREETART (VH1)	KPW4039-4	
8 - Outside clear lens seal	S27978-32	
9 - ADF holder	S27978-153	
10 - Grind button assembly	KP4562-1	
11 - CR2450 replacement battery	KP4491-1	

CUSTOMER ASSISTANCE POLICY

The business of Lincoln Electric is manufacturing and selling high quality welding equipment, consumables, and cutting equipment. Our challenge is to meet the needs of our customers and to exceed their expectations. On occasion, purchasers may ask Lincoln Electric for information or advice about their use of our products. Our employees respond to inquiries to the best of their ability based on information provided to them by the customers and the knowledge they may have concerning the application. Our employees, however, are not in a position to verify the information provided or to evaluate the engineering requirements for the particular weldment. Accordingly, Lincoln Electric does not warrant or guarantee or assume any liability with respect to such information or advice. Moreover, the provision of such information or advice does not create, expand, or alter any warranty on our products. Any express or implied warranty that might arise from the information or advice, including any implied warranty of merchantability or any warranty of fitness for any customers' particular purpose is specifically disclaimed.

Lincoln Electric is a responsive manufacturer, but the selection and use of specific products sold by Lincoln Electric is solely within the control of, and remains the sole responsibility of the customer. Many variables beyond the control of Lincoln Electric affect the results obtained in applying these types of fabrication methods and service requirements.

Subject to Change – This information is accurate to the best of our knowledge at the time of printing. Please refer to www.lincolnelectriceurope.com for any updated information.



www.lincolnelectric.eu

