

SEAL-SEAT[®]

GAUGES

REPAIRS SHOPS AND DISTRIBUTORS



The logo for SEAL-SEAT, featuring the company name in a bold, white, sans-serif font with a registered trademark symbol, set against a dark blue rectangular background with a thin red horizontal line at the bottom.

OVER 60 YEARS OF EXPERIENCE IN PROVIDING COMPONENTS PARTS TO EXACT OEM SPECIFICATIONS

We supply a broad range of component parts to customers' exact specifications - from single-element parts to multi-part assemblies. Our experienced professionals have extensive expertise in fabricating, machining, tooling, molding, and punching.

WE REGULARLY WORK IN:

Brass
Stainless steel
Nylon
Teflon®
KEL-F®

VARIOUS RUBBER COMPOUNDS

SUCH AS:

Neoprenes
Viton®
Nitrile
Chloroprene
Buna

WE PARTNER WITH OUR CUSTOMERS AND SUPPLIERS TO PROVIDE AN UNPARALLELED LEVEL OF SERVICE AND VALUE WITH AN EMPHASIS ON QUALITY

Whether developing parts for new products or providing replacements, Seal-Seat® is committed to the values of quality, service and integrity.

To assure maximum product quality, we employ accepted, time-proven methods of quality control, before, during, and after production. This includes 100% inspection of critical items. In addition, our long-term relationships with an extensive network of suppliers guarantees the best possible raw materials.

REPAIR GAUGES



Seal-Seat P/N: GG-002

Ordering Information:

SEAL-SEAT PART NO.	SIZE	RANGE	SCALE	LENS MATERIAL	NOTES	Body Material (Case)	Thread Connection	Location
GG-002		30						
SGG-006		200						
SGG-007	2"	400	PSI	Polycarbonate	Twist Lock	Steel	1/4" - 18 NPT	Low Mount
SGG-010-S		4000						



Seal-Seat P/N: GG-022S

Ordering Information:

SEAL-SEAT PART NO.	SIZE	RANGE	SCALE	LENS MATERIAL	NOTES	Body Material (Case)	Thread Connection	Location
GG-022-S		30						
SGG-026		200						
SGG-027	2 1/2"	400	PSI	Polycarbonate	Twist Lock	Steel	1/4" - 18 NPT	Low Mount
SGG-030-S		4000						

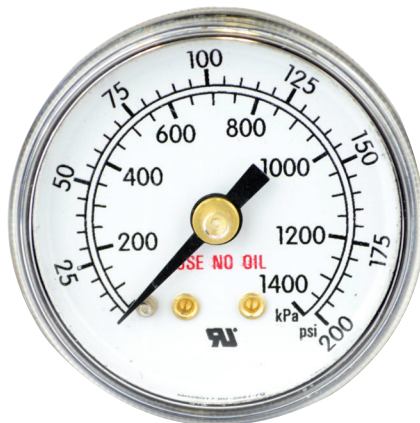
REPAIR GAUGES



Seal-Seat P/N: US-022

Ordering Information:

SEAL-SEAT PART NO.	SIZE	RANGE	SCALE	LENS MATERIAL	NOTES	Body Material (Case)	Thread Connection	Location
US-022-S		30						
US-026-S		200						
US-027-S	2 1/2"	400	PSI	Polycarbonate	Twist Lock	Brass	1/4" - 18 NPT	Low Mount
US-030-S		4000						



Seal-Seat P/N: V-602-S

Ordering Information:

SEAL-SEAT PART NO.	SIZE	RANGE	SCALE	LENS MATERIAL	NOTES	Body Material (Case)	Thread Connection	Location
V-602-S	1 1/2"	4000 28000	PSI/kPa	Polycarbonate	Twist Lock	Steel	1/8" - 27	Center Back Mount



PARTS AND ASSEMBLIES

Diaphragms | Seats | Nozzles | Nuts | Valves | Coils

Looking for a unique or hard to find part?
Our customer service department can locate most parts quickly.

Customer Service: 1-800.972.2233

Fax: 626.363.8964

sales@sealseat.com

www.sealseat.com

SEAL-SEAT®

Seal-Seat
9160 Norwalk Boulevard
Santa Fe Springs, CA 90670
Customer Service: 1-800.972.2233
Fax: 626.363.8964
sales@sealseat.com
www.sealseat.com



PN: