

# CAR-W Software

## CASE STUDY



### Overview

Let Lincoln Electric CAR-W® (Computer Aided Robotic Welding) software help save you hours of programming time per part, even if you only have basic welding and robotics experience! CAR-W software is the quick and accurate way to program welds.



### Testing Procedure

- All testing was performed on the Fab-Pak® Indexing Skyhook (XSH) robotic welding system with an ABB® robot
- Welds added for all weld seams on part
- All welds used a 1F Weld By Numbers™ process
- All welds had at least 3D start search (wire)
- Part was placed in multiple locations/orientations on the positioner to get a range of plan results

### Results

CAR-W software outperformed manual weld programming with an ABB teach pendant in **EVERY** test.

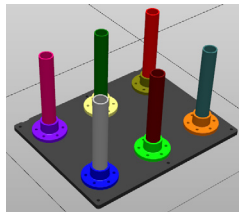
leading to an average  
**PROGRAMMING  
TIME  
SAVINGS**  
of over

**6  
hours**



for  
**EACH  
WELDED  
PART**

### Example Parts



**Axles**

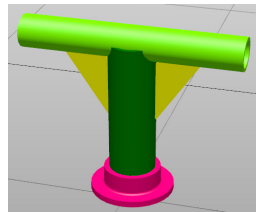
**CAR-W software saved 3h 26m**

Difficulty: Easy

Size: Small

Weld Count: 6

Weld Types: Circle segments, bosses



**T-Pipe**

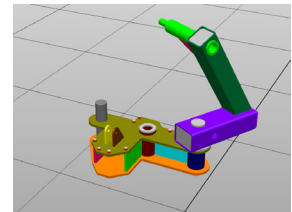
**CAR-W software saved 9h 46m**

Difficulty: Medium

Size: Medium

Weld Count: 17

Weld Types: Exterior, coordinated,  
circle segments, bosses



**Arm**

**CAR-W software saved 15h 57m**

Difficulty: Hard

Size: Large

Weld Count: 52

Weld Types: Interior, exterior,  
coordinated, circle segments, bosses

Actual results will vary depending on many factors, including, but not limited to, weld procedure, weldment design and fabrication methods.

#### CUSTOMER ASSISTANCE POLICY

The business of Lincoln Electric is manufacturing and selling high quality welding equipment, automated welding systems, consumables, and cutting equipment. Our challenge is to meet the needs of our customers, who are experts in their fields, and to exceed their expectations. On occasion, purchasers may ask Lincoln Electric for information or technical information about their use of our products. Our employees respond to inquiries to the best of their ability based on information and specifications provided to them by the customers and the knowledge they may have concerning the application. Our employees, however, are not in a position to verify the information provided or to evaluate the engineering requirements for the particular weldment, or to provide engineering advice in relation to a specific situation or application. Accordingly, Lincoln Electric does not warrant or guarantee or assume any liability with respect to such information or communications. Moreover, the provision of such information or technical information does not create, expand, or alter any warranty on our products. Any express or implied warranty that might arise from the information or technical information, including any implied warranty of merchantability or any warranty of fitness for any customers' particular purpose or any other equivalent or similar warranty is specifically disclaimed.

Lincoln Electric is a responsive manufacturer, but the definition of specifications, and the selection and use of specific products sold by Lincoln Electric is solely within the control of, and remains the sole responsibility of the customer. Many variables beyond the control of Lincoln Electric affect the results obtained in applying these types of fabrication methods and service requirements.

Publication LEA-010824TM1-00

© Lincoln Global Inc. All Rights Reserved. All trademarks and registered trademarks are the property of their respective owners.  
[www.lincolnelectric.com/automation](http://www.lincolnelectric.com/automation)

THE LINCOLN ELECTRIC COMPANY  
22801 Saint Clair Avenue • Cleveland, OH • 44117 • U.S.A.  
Phone: +1 216.481.8100 • [www.lincolnelectric.com](http://www.lincolnelectric.com)