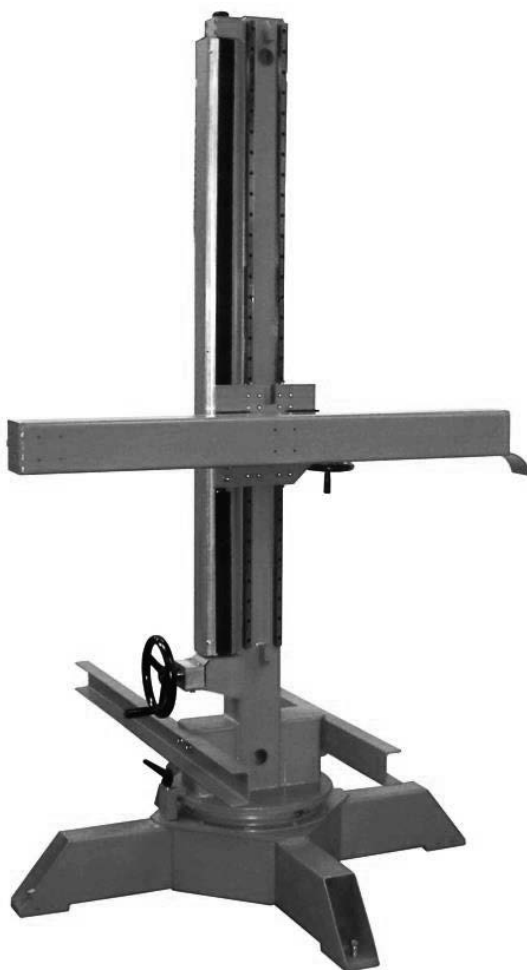


CB-MATIC

XSF-XSM 15.10

SAFETY INSTRUCTIONS FOR USE AND MAINTENANCE

MACHINE No W000277601 - W000277602



EDITION : EN
REVISION : D
DATE : 05-2020

Instructions for use

REF : **8695 6040**

Original instructions

Thank for the trust you have expressed by purchasing this equipment, which will give you full satisfaction if you follow its instructions for use and maintenance.

Its design, component specifications and workmanship comply with applicable European directives.

Please refer to the enclosed CE declaration to identify the directives applicable to it.

The manufacturer will not be held responsible where items not recommended by themselves are associated with this product.

For your safety, there follows a non-restrictive list of recommendations or requirements, many of which appear in the employment code.

Finally we would ask you kindly to inform your supplier of any error which you may find in this instruction manual.

CONTENTS

A - IDENTIFICATION1

B - SAFETY INSTRUCTIONS.....2
AIRBORNE NOISE.....2
SPECIFIC SAFETY INSTRUCTIONS.....2

C - DESCRIPTION4
1 - VERTICAL SHAFT5
2 - HORIZONTAL ARM5
3 - GUIDE BLOCK.....6
4 - FIXED BOOM SHAFT BASE:6
5 - MOTORIZED CARRIAGE8
6 - COMMON FEATURES10
7 - OPTION.....12
8 - OVERALL DIMENSIONS.....13

D - MONTAGE INSTALLATION15
1 - FIXING15
2 - HANDLING.....17
3 - MOTORIZED CARRIAGE18
4 - GENERATOR SUPPORTS.....20

E - MAINTENANCE.....22
1 - SERVICING.....22
2 - SPARE PARTS24

PERSONAL NOTES28

REVISIONS

REVISION B**03/10**

DESIGNATION	PAGE
Creation	

REVISION C**07/10**

DESIGNATION	PAGE
Update monthly servicing	E-23

REVISION D**05/20**

DESIGNATION	PAGE
To change logos	

A - IDENTIFICATION

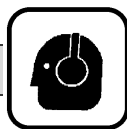
Please enter the number of your machine in the following box.

Quote this information in all correspondence.



B - SAFETY INSTRUCTIONS

For general safety instructions, please refer to the specific manual supplied with the equipment.



AIRBORNE NOISE

Please refer to the specific manual supplied with the equipment.

SPECIFIC SAFETY INSTRUCTIONS

FIXED SHAFT BOOM.



It is essential to anchor the unit to the ground for complete operator safety.

MOTORIZED CARRIAGE BOOM.

Before use, check that the antitilt clamps are properly reassembled.

Make sure that the mechanical stops are mounted at the end of the rails.



Do not stand on or place any load on the "full-stop"(bumpers). Do not hinder their movement.

OPERATING CONDITIONS

Nothing must be placed on tracks.

Before using the machine, check that all the protection elements are installed.

Do not remain under the arm of the boom.

**The position of the operator is in front of the control console.
The machine is designed to operate with only one operator**

Make sure that during the displacements no part of the boom that is not protected by "full-stop" comes into contact with an obstacle.



Any work (maintenance, troubleshooting) at heights on the boom must be done with an appropriate personnel lifting device.

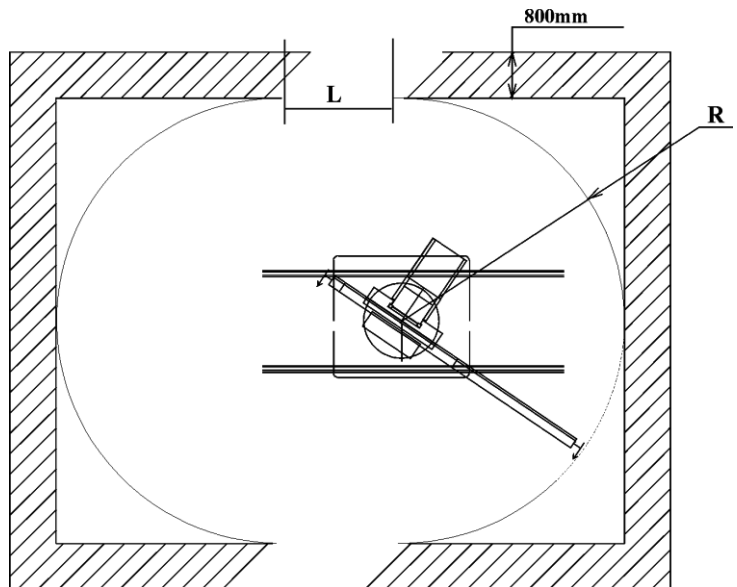
Check that no part of the machine can near an obstacle placed at less than 500mm according to safety standard NF EN 349

REQUIREMENT : the operator must have a working space of at least 800 mm in width according to safety standard NF EN 547-1-3.

We recommend marking out the floor as shown opposite.

Note: Dimension R (max. dimension with arm full out) is to be measured. Dimension L is determined according to the number of tracks.

(Layout for unequipped boom. See specific drawing supplied for equipped booms)



SAFETY MECHANICAL DEVICE

A mechanical device called « security screw » allows to control the wear of the nut of the trapezoidal screw. When the wear is important, a pin blocks and blocks the security screw.



Do not exceed the admissible load at the end of the arm(see dimension table)

Before use for welding, lock shaft rotation with the fastening screws (max. Clamping torque : 50 mN)

C - DESCRIPTION

These multi-process column nadn boom is intended for positioning and displacing a welding or cutting automatic heads in order to serve a positioner, a rotator, a welding lathe etc...

2 C&B models :

1°) CB-MATIC 15x10 XSF C&B fixe with turning shaft
REF. W000277601

2°) CB-MATIC 15X10 XSM C&B mobile with turning shaft
REF. W000277602

Railway

Ref : W000315250 Length. 6m

Ref : W000315251 Length. 3m

OPTIONS :

- Option motorized arm lifting Ref : W000277604

Addition a motoreducer instead of the the crank of the trapezoidal screw.

- Option motorized arm displacement Ref : W000277603

Motor A77 – speed 12,3 to 307 cm/mn

- Option tachy Ref : W000157060

To be mounted on the carriage motorization for a speed 23 to 570cm/mn

NOTA :

The lift and arm motorized options are assembled exclusively in the factory.

1 - VERTICAL SHAFT

The shaft consists of a machined steel profile with on its lower part a base plate supporting a ball-bearing ring Rep. (9).

The unit is either mounted on a fixed base (models XSF) or on a motorized carriage (models XSM).

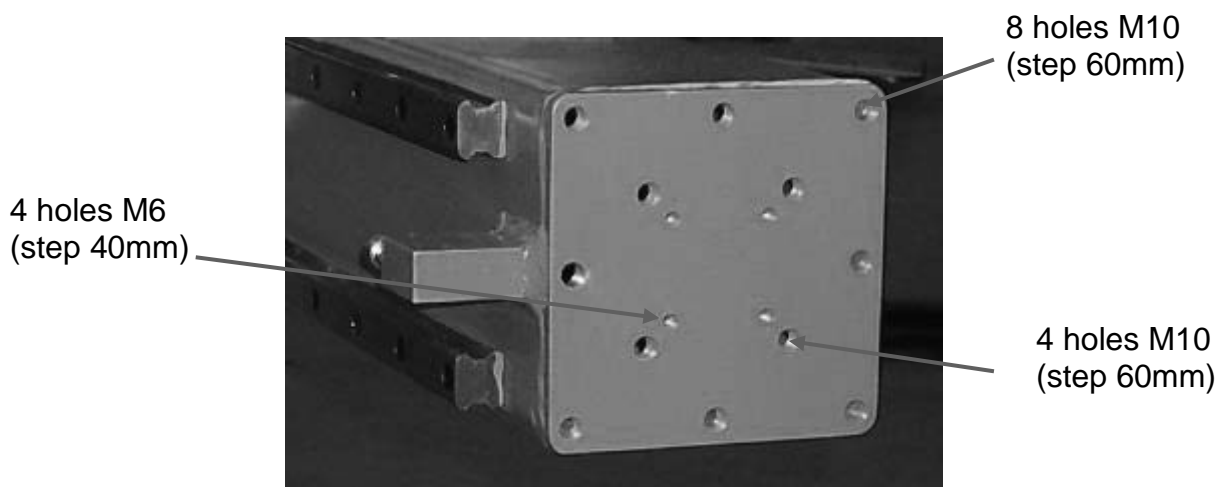
On the shaft, there is mounting 2 ball rail bearing Rep.(1) to insure the movement of the slide. On the top part of the shaft, there are 2 holes for the slings.

The vertical movement of the arm is done by a trapezoidal screw Rep.(2) actionned by a crank Rep.(3). This screw is protected by a cover and one double lip-joints.

At the base of the shaft there are two angle cleats designed to take the generator support arms (max. load 500 kg).

2 - HORIZONTAL ARM

This arm consists of a CTP1 steel beam, length 1.5M, section 140 x 140 mm Rep.(7).



The section is sufficient to ensure leadthrough for electrical cables and pipes feeding the welding head from the inside.

The end of the arm includes drilled holes as follows

60x60 - 4 M10 holes

40x40 - 4 M6 holes

60x60 - 8 M10 holes.

3 - GUIDE BLOCK

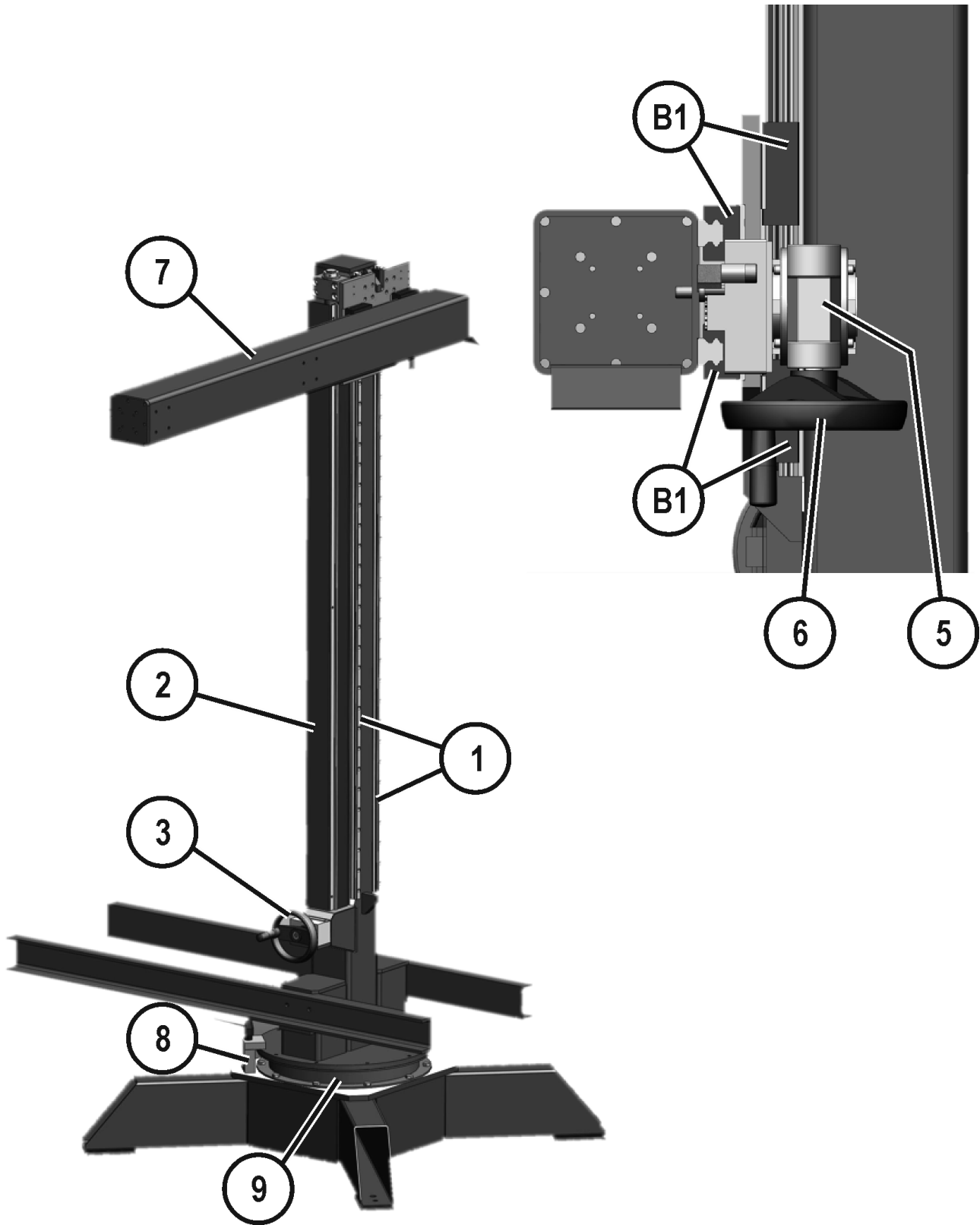
The slide (4) is used to guide the shaft and the arm beams in relation to each other using ball bearing guide rollers (B1).; (4 ball bearings for the shaft, 4 ball bearings for the arm).

Arm travel is effected manually by means of a reducer (5) (wheel and screw) with a circular hand wheel (6).

4 - FIXED BOOM SHAFT BASE:

This base receives the shaft ring and consists of mechanically welded crossed tubes.

The locking handle (8) is used to lock the shaft in position.



5 - MOTORIZED CARRIAGE

The carriage is of mechanically welded construction and ensures complete protection of all the mechanical components of the geared motor drive, which are thereby also protected against shocks.

Length : 1500mm
Width : 1200mm

The carriage moves along machined rails (C4) using 4 145mm diameter rollers (C1) (rails anchored to the ground).

It is guided by rollers resting against the machined side faces of one of the rails. Two guide rollers are eccentrically mounted in order to eliminate any play.

Anti-tilt clamps (C3) ensure boom/rail safety.



The carriage may be equipped with a front and rear full stop (C2).

The carriage is powered by a clutchless geared motor assembly comprising :

- a 42V DC permanent magnet motor (M4)
- a 3-stage reducer :

1st stage Rep.(M1) :

Belt

2nd stage Rep.(M2) :

Wheel and screw

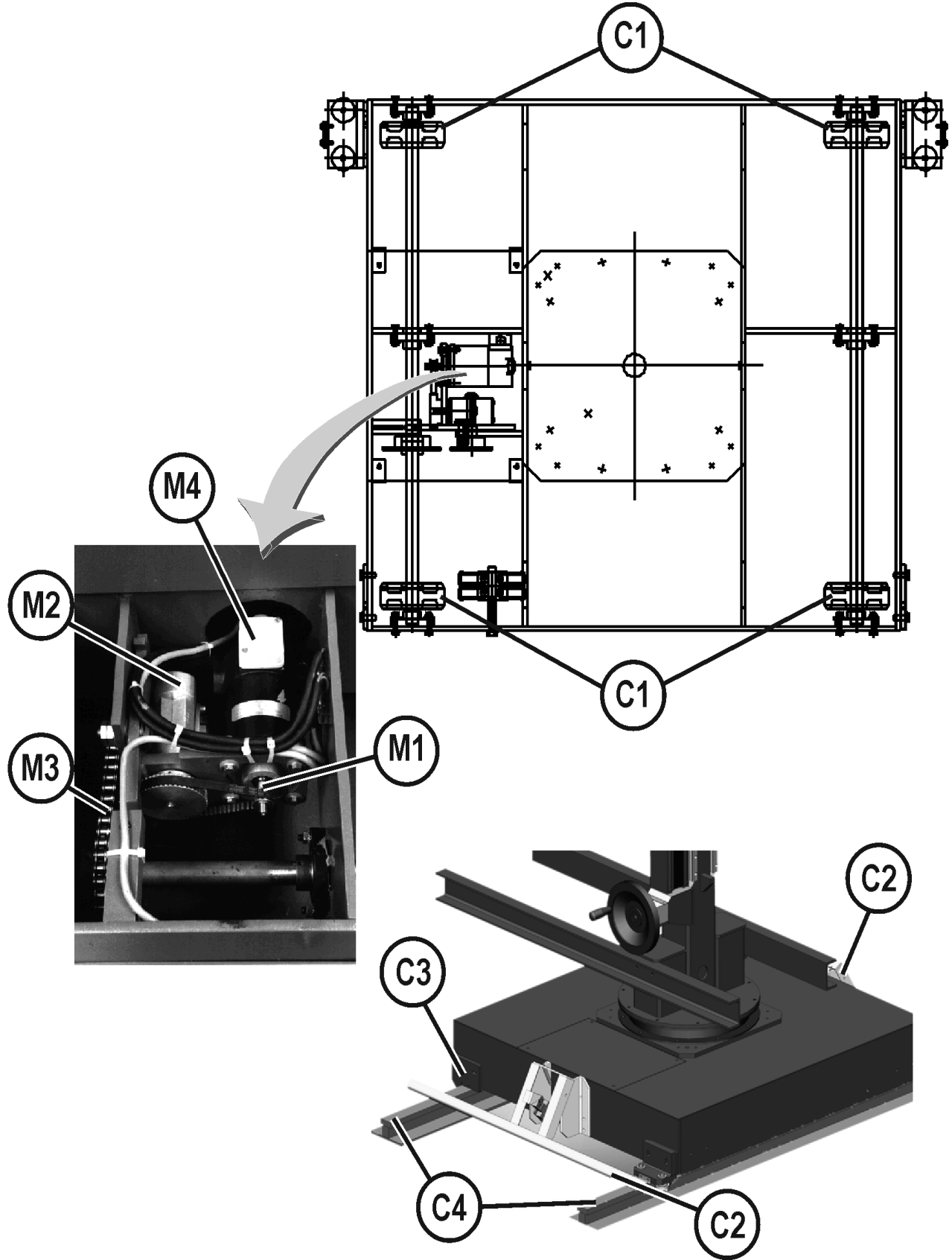
3rd stage Rep.(M3) :

pinion chain / transmission to a motor axle (mounted on bearings).

The movement speed is setting from 57 to 570 cm/mn

Motor power 170 W.

The shaft is fixed to the centre of the carriage. Two welding earth points max. 2x300A ensure welding current return via the rails.



6 - COMMON FEATURES

Vertical Arm Travel :	1500 mm
Horizontal Arm Travel :	1000 mm
Manual Arm Rotation :	345°
Load at end of arm :	200 kg
Slide :	Rail ball bearing
CB-MATIC generator support :	
max. generator weight	500 kg

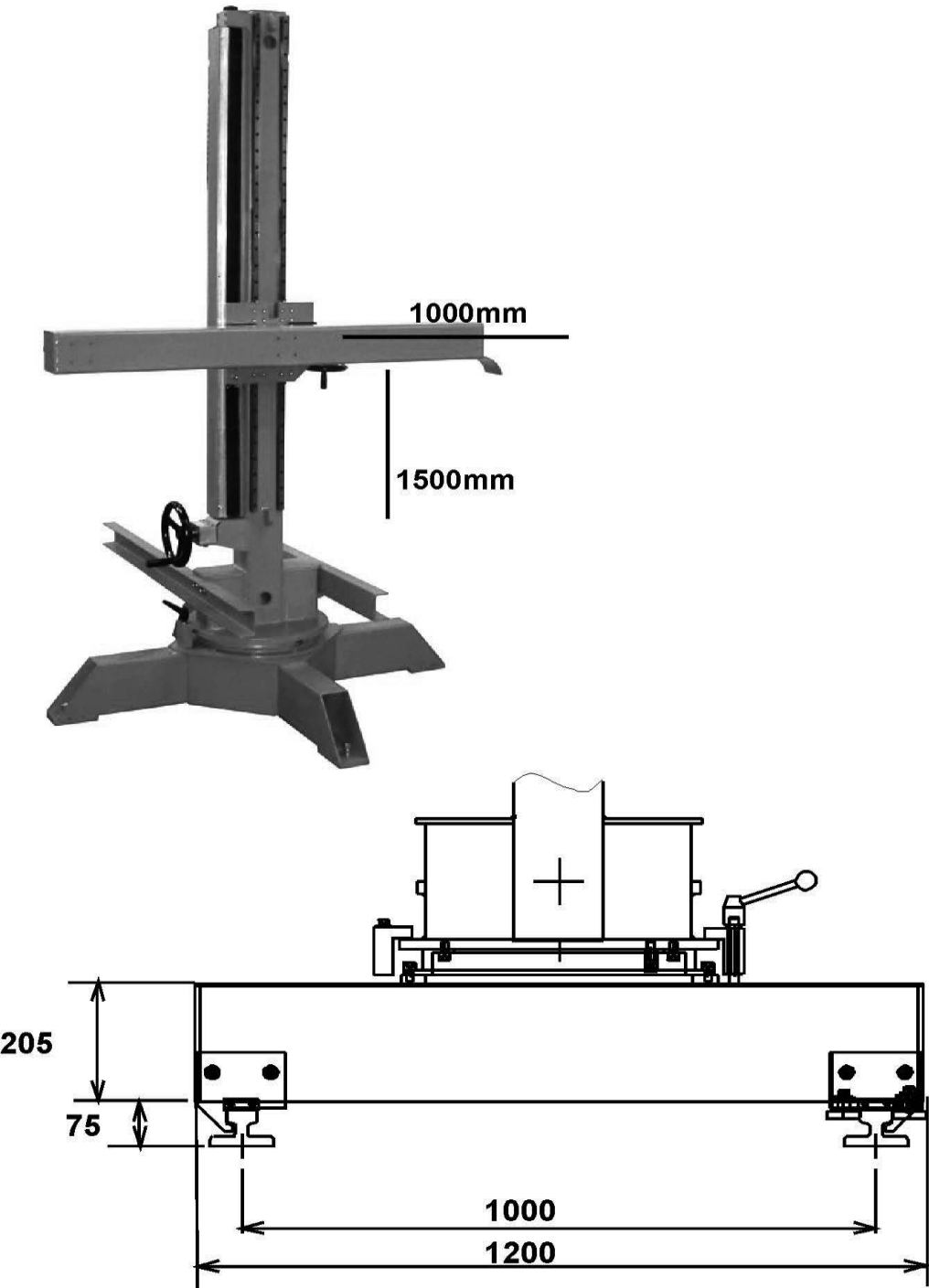
MOTORIZED BOOMS :	
Track base :	1000 mm
CARRIAGE	
Length :(with full stop)	1500 mm
Width :	1200 mm
Height :	205 mm
Ground clearance : (rail not sunk)	75 mm
Vitesse de déplacement :	57 à 570 cm/min
Power supply :	- 24V AC 100VA - 42V AC 400VA Supplied by all generators

N.B. :

The speed range can be increased from 57 - 570 cm/min.to 23 - 570 cm/min. by adding a tachogenerator ref. W000157060 to the A77 motor.

Motorized booms move on machined rails :

- 1 three-sided rail for carriage guidance
- 1 one-sided rail for carriage support



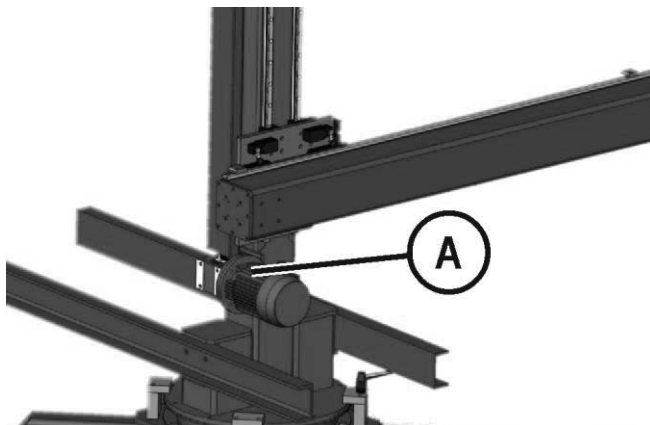
7 - OPTION

MOTORIZED ARM LIFTING (W000277604)

- This option consists to replace a crank by a beveled gear and a motoreducer of 0,55 Kw (A).

- On the shaft, it's installed a rail with cams and 2 limit switches on the slide.

⇒ Maxi lifting speed = 1,2 m/mn

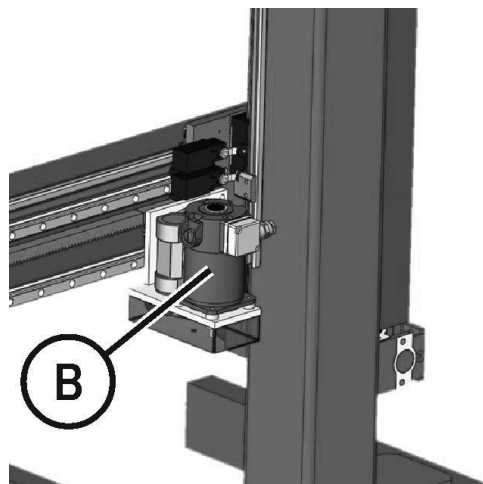


MOTORIZED ARM MOVEMENT (W000277603)

- This option consists to replace a crank with a motor (B) and a belt

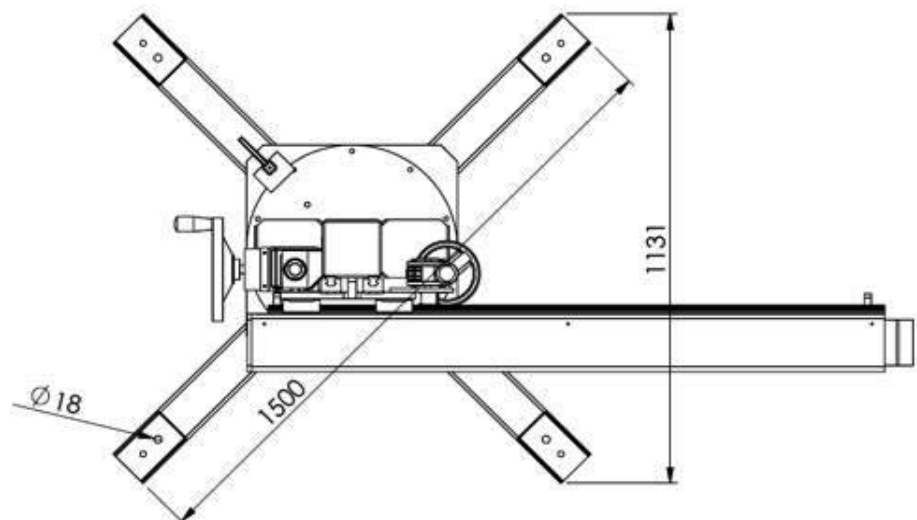
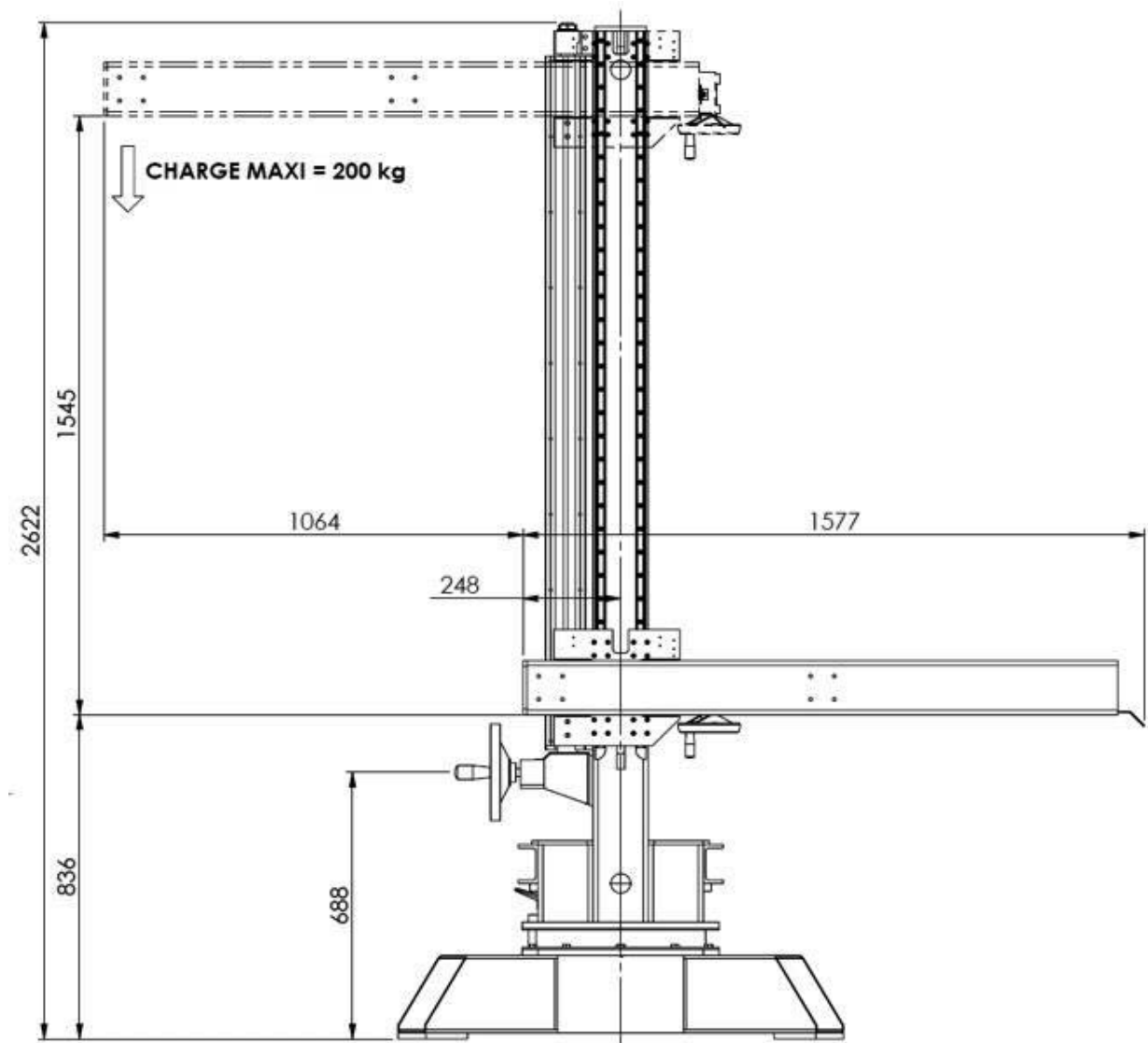
- On the arm, it's installed a rail with cams and 2 limit switches on the slide.

⇒ Speed movement = 12,3 to 307 cm/mn

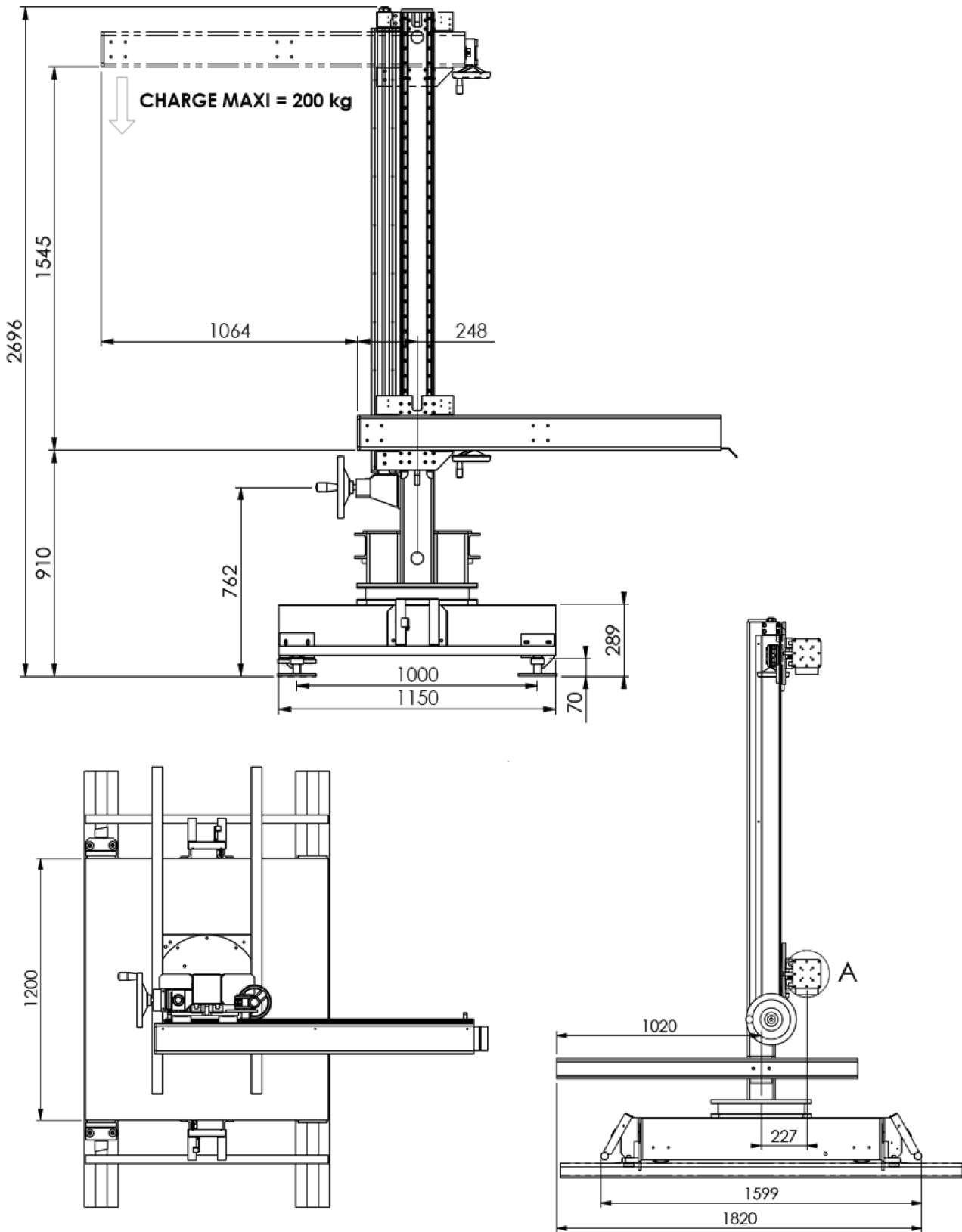


8 - OVERALL DIMENSIONS

CB-MATIC XSF 15X10



CB-MATIC XSM 15 X 10



D - MONTAGE INSTALLATION

1 - FIXING

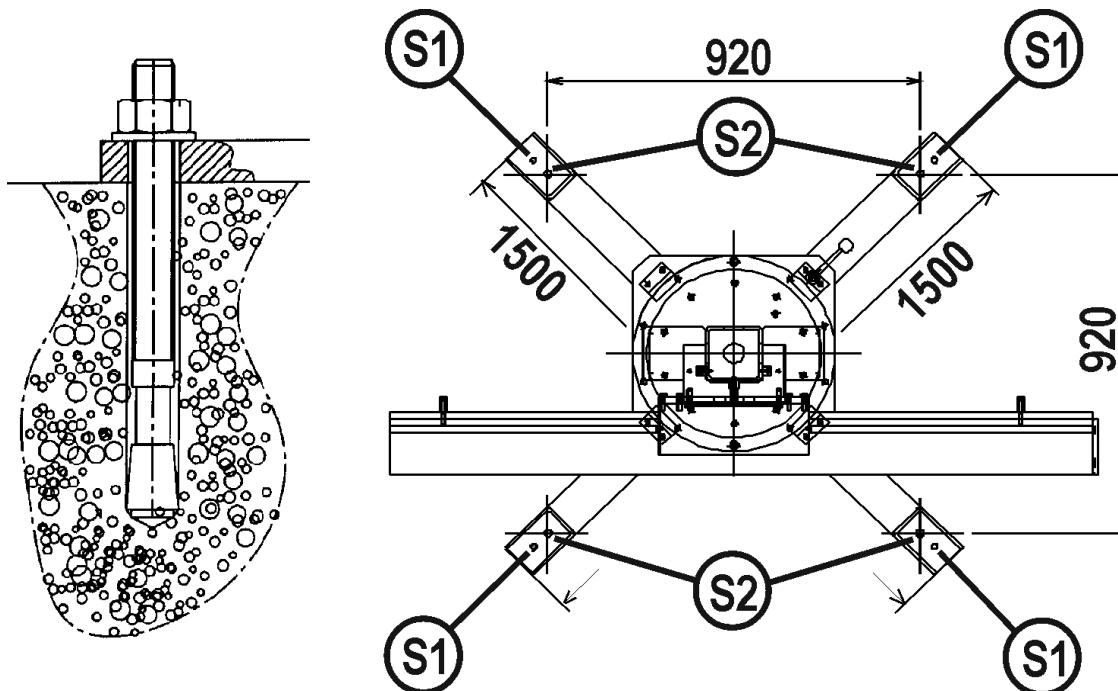
BOOM XSF

BASE

Position the boom, then mark out and drill in accordance with the bolt diameter required [(S2) : 4 fixing holes].

Adjust the level of the base with screw jacks (S.1) (magnetic level recommended).

Fasten the nuts on the anchor bolts to complete ground anchoring.

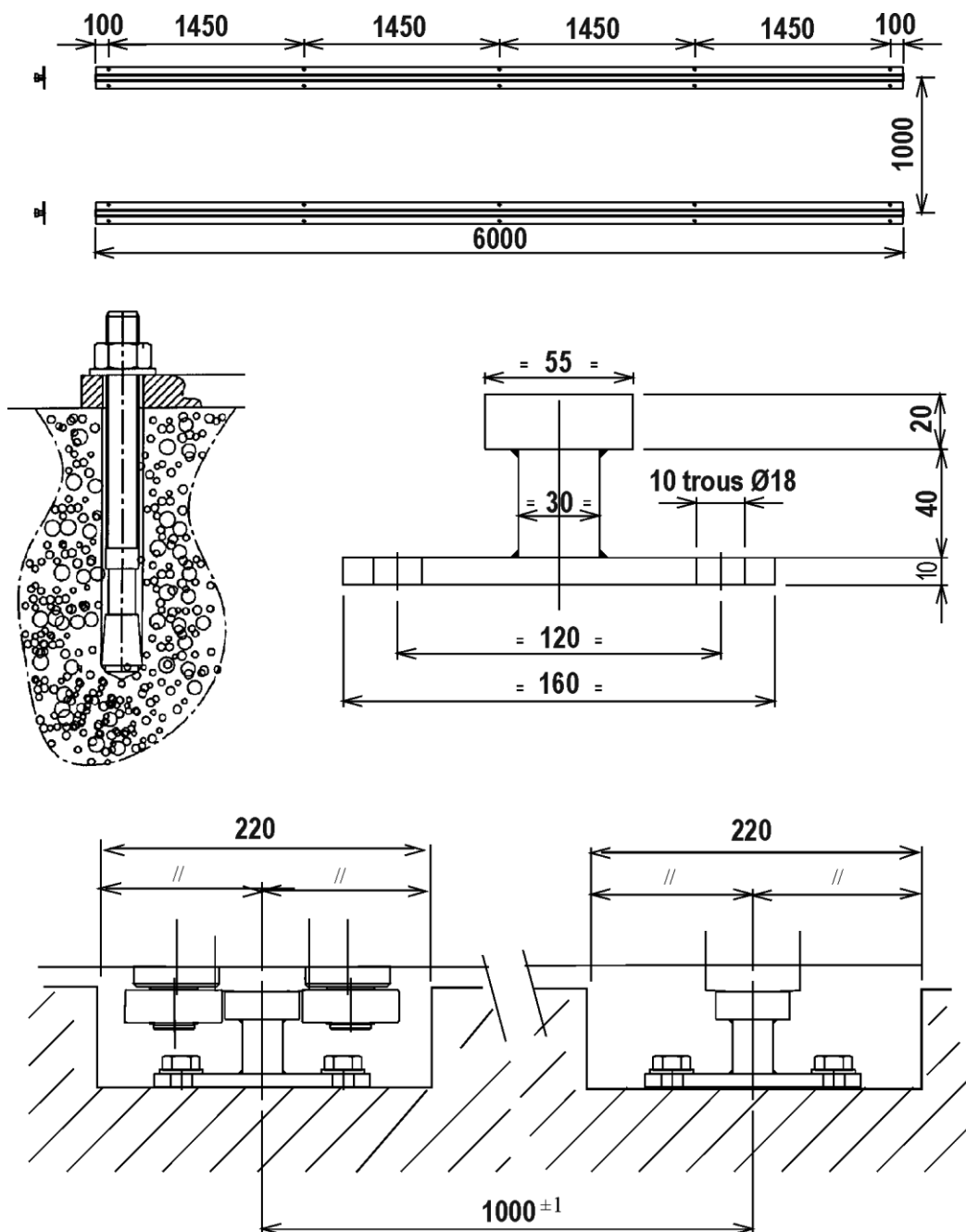


BOOM XSM

TRACK

Mark out and drill the holes for the anchor bolts in accordance with the layout drawing.

Fix the rails level in the vertical plane using pliers (R1), maximum tolerance 0,2 mm. Ensure the rails are straight in the horizontal plane, 0.5 mm maximum from the guide rail (Track base : 1000mm).



2 - HANDLING

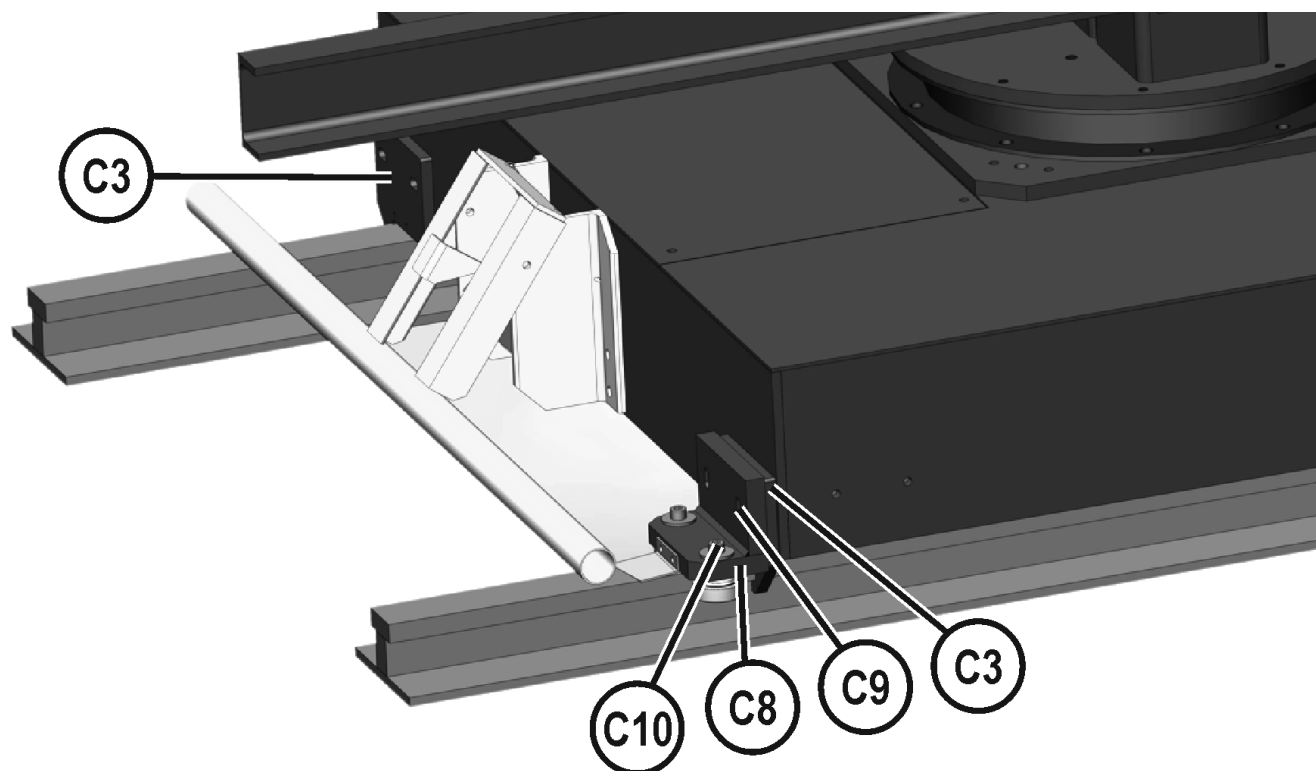


XSF	F = 400 daN
XSM	F = 500 daN



Operator protection :
Helmet - Gloves - Safety
shoes

3 - MOTORIZED CARRIAGE



Operator protection :
Helmet - Gloves - Safety
shoes



After positioning and fixing the tracks, place the carriage onto the rails.adjusting it so that the guide rollers lock on to the (3-sided) machined rail of the track.

Remove the 2 guide roller supports Rep (C8) by unscrewing the screws Rep (C9).

Remove antitilt clamps Rep (C3) and replace them in a downward position.

Reassemble the 2 guide roller supports Rep (8).

Before locking the screws Rep.(C9) :

- the clamp horizontally leaving about 1mm between rail and clamp
- the roller support vertically so that the roller is half way up the machined part of the rail.

Carry out the same operations for the antitilt clamp Rep (C8) on opposite side.

Check guide roller adjustment by sliding a 0.5 mm shim between one of the bearings of each guide roller and the machined side face of the rail.

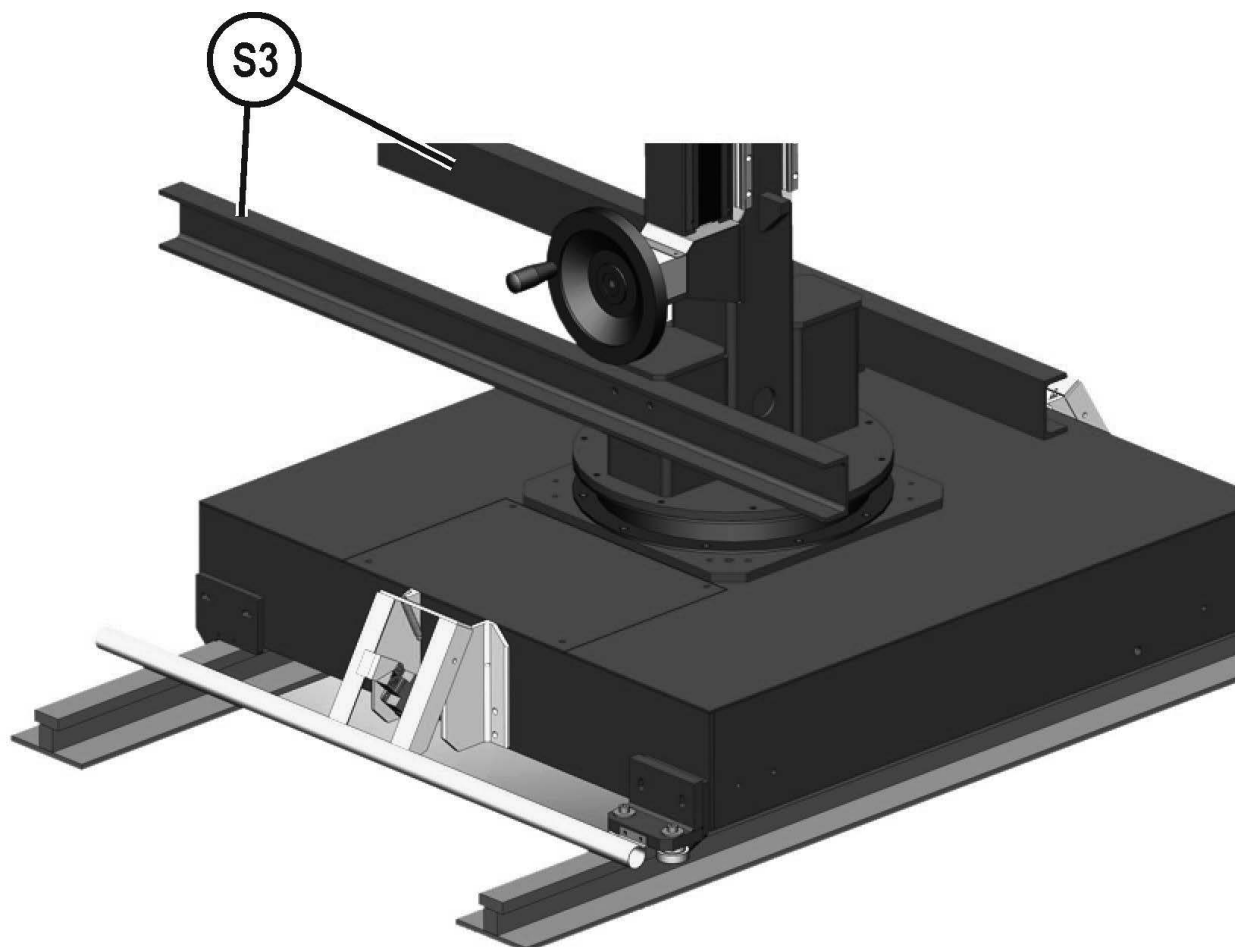
If an adjustment is required, unlock the screws Rep (C10) on the guide rollers' exterior side and adjust by turning the eccentric shaft.

Lock the screws Rep (C10).

Check that the earth connections are in the right position (brushes good and flat against the machined side of the rail).

4 - GENERATOR SUPPORTS

Fix the generator supports (S3) on to the shaft, fixed with
HM12X25 screws and MU12 washers
Maximum load: 500 kg.



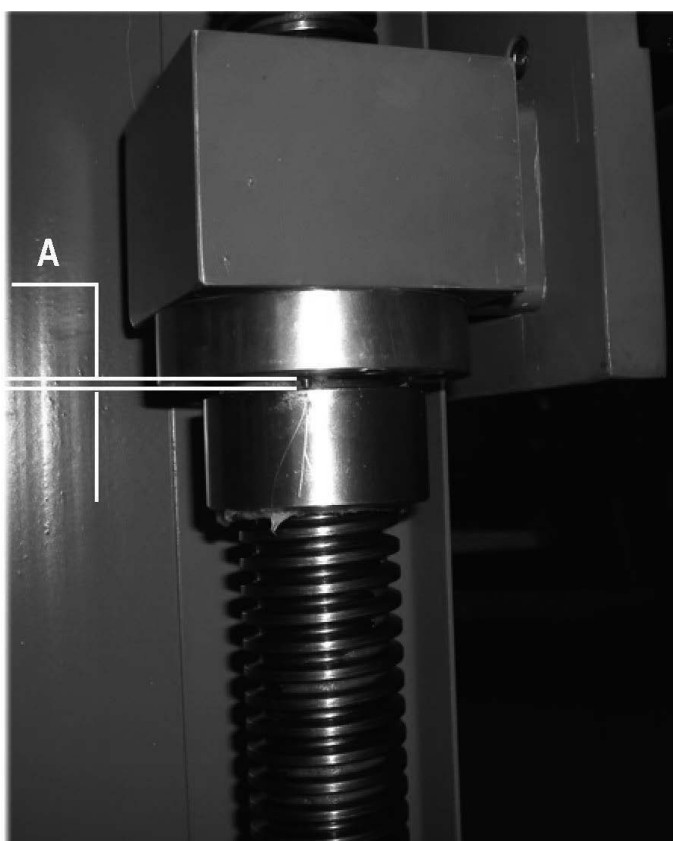
E - MAINTENANCE

1 - SERVICING


- So that the machine continues to provide good service for as long as possible, a certain minimum of care and maintenance is necessary
- The frequency of this maintenance work is given on the basis of the production of one work station per day. Maintenance should be more frequent if production is greater.

Your maintenance department may photocopy these pages so that it can follow up maintenance dates and operations (tick as appropriate)

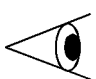
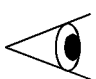
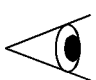

Before all greasing operations, it is possible to use a trichlorethylene-based cleaning agent.



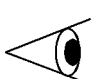
300 hrs or once a month

EQUIPMENT	OPERATIONS		LUBRIFICATIONS
DIRECTIONAL RING		Grease It is important to make the ring rotate after greasing, then to complete greasing after the rotation.	ESSO BEACON EP2

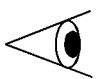
500 hrs

EQUIPMENT	OPERATIONS		LUBRIFICATIONS
LINEAR GUIDE		Check the condition of the rails	ESSO BEACON EP2
BALL BEARING		Check the condition of the bearings	ESSO BEACON EP2
TRAPEZOIDAL SCREW		- Check the condition of the screw - Greasing by brush	ESSO BEACON EP2
BEVELED GEAR		- Dismount the cover and check the condition of the beveled gear - Greasing by brush	ESSO BEACON EP2

MENSUEL

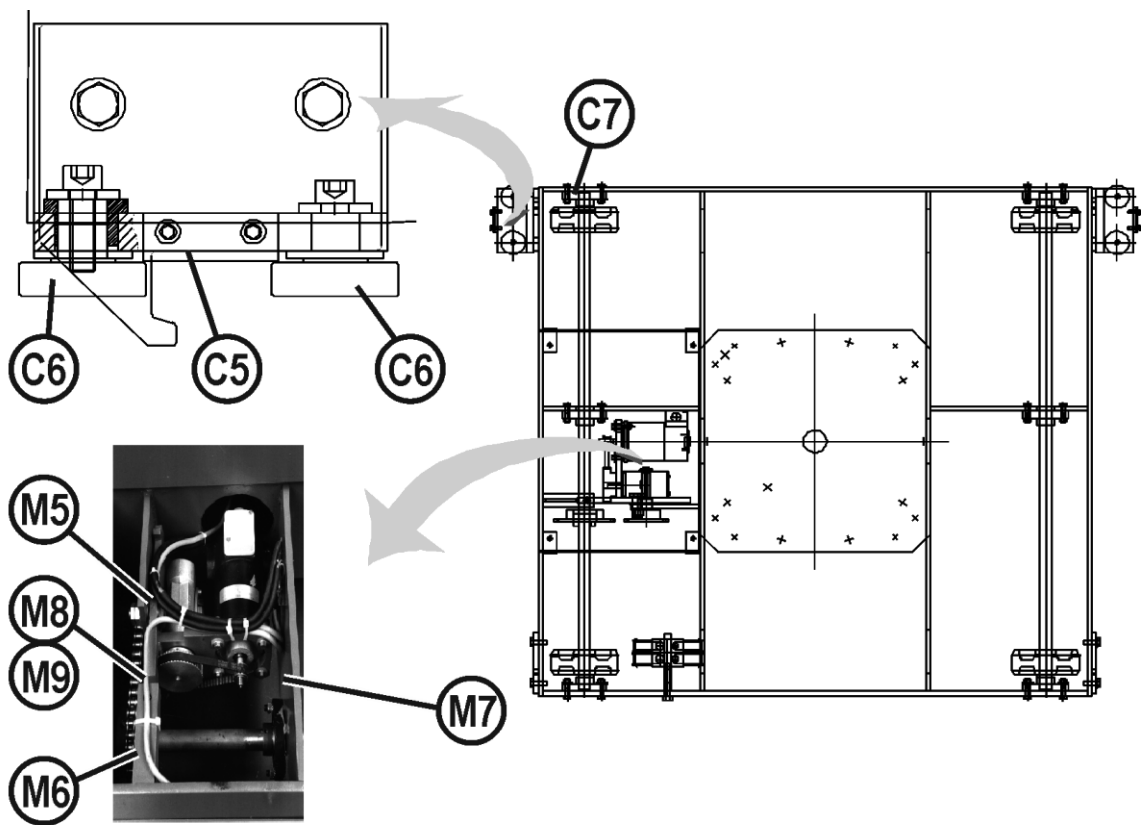
EQUIPMENT	OPERATIONS		LUBRIFICATIONS
RACK OF THE ARM		Brush the toothed side, without adding grease.	
MOTOR CARRIAGE & SLIDE BLOCK BELT		Check they are tightened	

MONTHLY

EQUIPMENT	OPERATIONS		LUBRIFICATIONS
SECURITY VERTICAL SYSTEME		Check the safety syteme ; if the dimension A A = > 0,5 mm → OK ≤ 0,5 mm → Screw/mut and/or safety mut to be changed	

2 - SPARE PARTS

MOTORIZED CARRIAGE



✓	normally in stock
✗	not in stock
	on request

Item	Ref.	Stock	Order	Designation
C5	9120 9747			Scraper Felt
C6				Roller ZL 204 NPDU
C7				Bracket Bearing Ref : FLCTE25
M4	W000164864			MOTOR A77
M5	9120 9748			Shaft Pinion
M6	9120 9746			Roller Shaft Pinion
M7				Belt 140 XL 037
M8				Single Chain Ref: 7N pitch 12,7 (l: 48 links)
M9				Closing Link N3206 for 7N
	9120 8200			Tacho generator/A77 Motor Adaptation (optional)

For parts order, give the quantity required and put the number of your machine in the box below.

CE

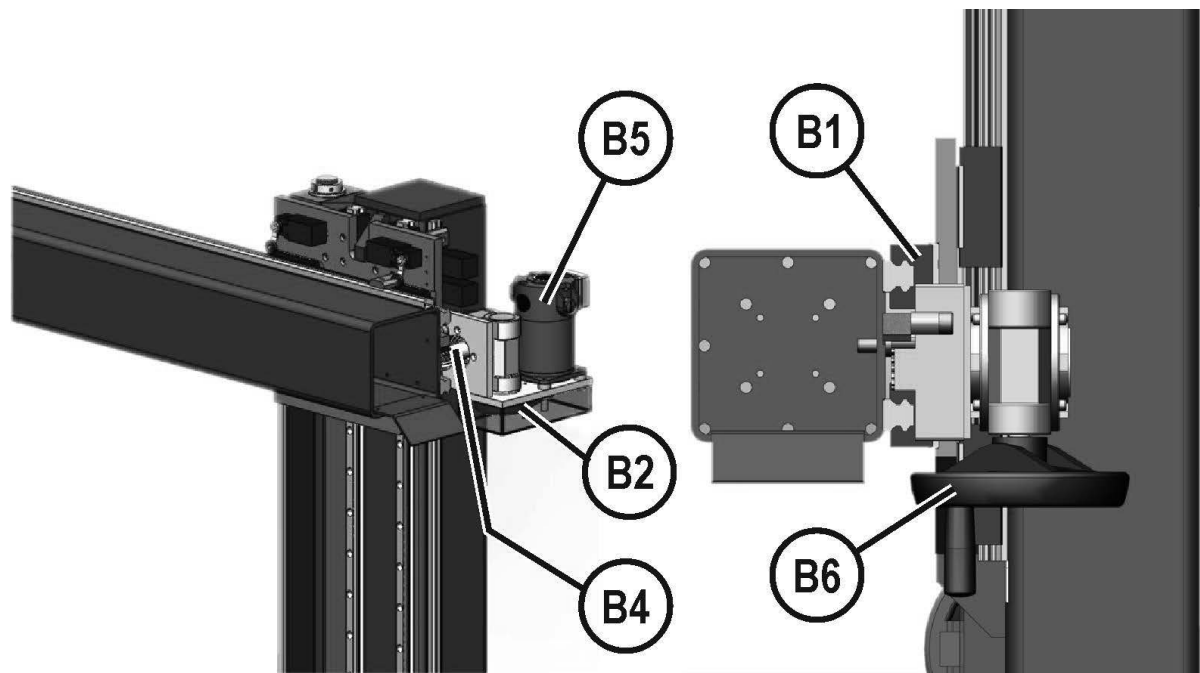
Type

Matricule

TYPE :

Number :

GUIDE BLOCK : SLIDE



		<div><div><div>✓</div><div>normally in stock</div></div><div><div>✗</div><div>not in stock</div></div><div><div></div><div>on request</div></div></div>		
Item	Ref.	Stock	Order	Designation
B1				Ball bearing size 25
B2				Belt 130 XL 037
B4	9120 9738			Shaft Pinion
B5	W000164864			Motor A77
B6				Arm crank

For parts order, give the quantity required and put the number of your machine in the box below.

CE

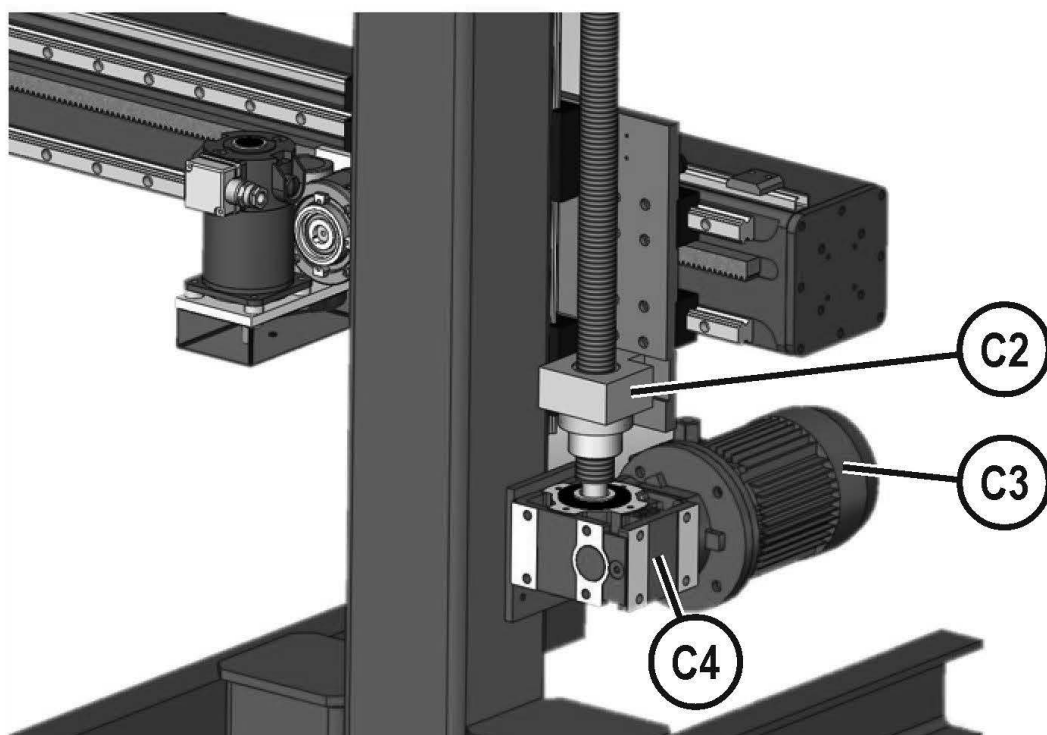
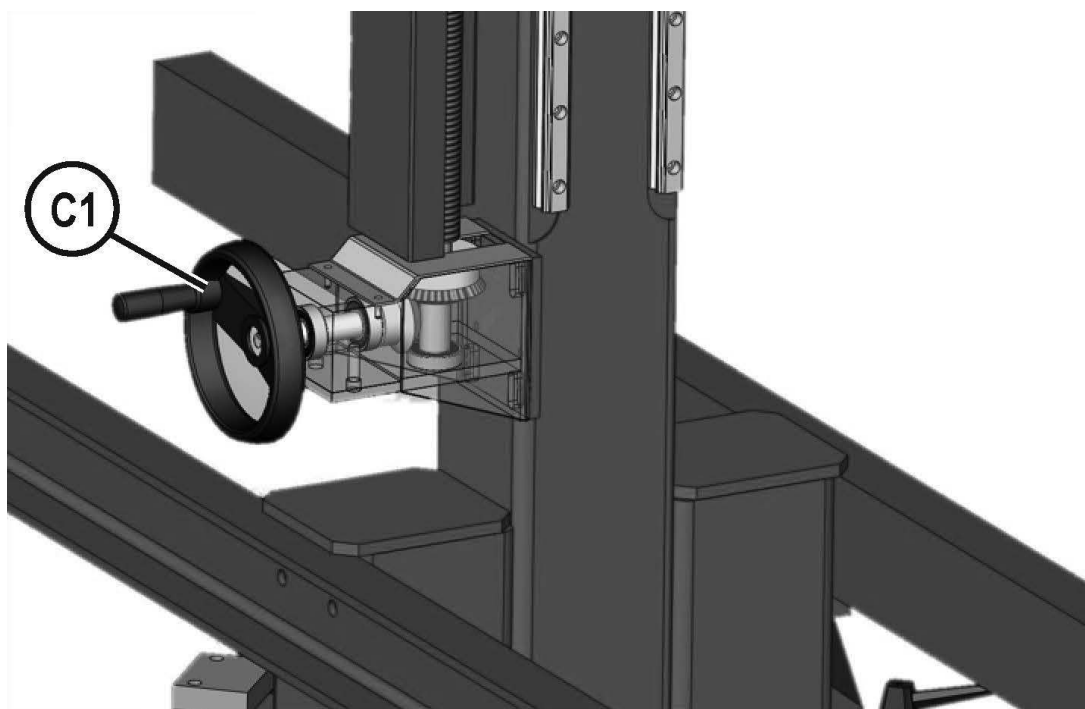
Type

Matricule

TYPE :

Number :

MANUAL OR MOTORIZED ARM LIFTING



✓	normally in stock
✗	not in stock
	on request

Item	Ref.	Stock	Order	Designation
C1				Lifting crank
C2				Nut of trapezoidal screw
C3				Lifting motor
C4				Lifting reducer

For parts order, give the quantity required and put the number of your machine in the box below.

CE Type <input type="text"/> Matricule <input type="text"/>	TYPE :
	Number :

[illegible]