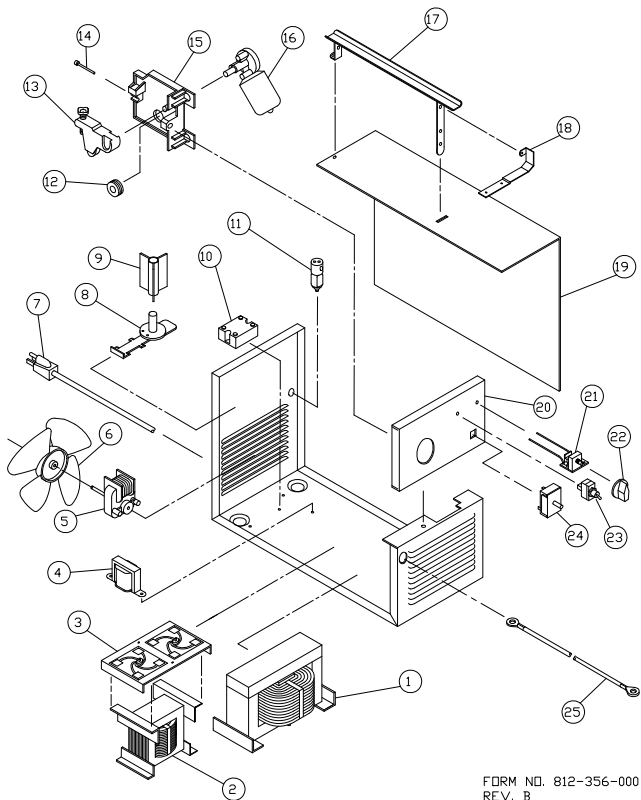


REPLACEMENT PARTS LIST

117-028



117-028 Century 75 Amp Wirefeed Welder

Item	Lincoln Stock #	Customer #	Description
1	NLA	860-904-888	Main weld transformer
2	NLA	860-903-888	Reactor Coil w/ thermostat
		246-169-000 (Klixon 7AM028A10)	Thermostat only
3	860-905-666	860-905-666	Rectifier assy.
4		860-902-888	Control Transformer (120Vac - 24Vdc)
5	216-087-666	216-087-666	Fan motor
6		316-009-000	Fan blade
7		248-185-666	Power cord
8	312-076-666	312-076-666	Wire spindle
9	312-110-666	312-087-666	Spool adapter
10	216-055-666	216-055-666	Triac relay
11	246-086-666	246-086-666	Gas solenoid
12	310-122-500	4323	Drive roller, 0.024 / 0.030 / 0.035
	860-616-002	4324	Drive roller, neoprene for aluminum
13	Included in #15	880-089-666 312-107-000	Tension arm only
14	Included in #15	239-123-666 239-208-000	Inlet guide tube
15	880-130-666	880-130-666	Drive base assy. with arm
16	216-079-666	216-079-666	Drive Motor w/gearbox
17	NLA	880-012-010	Handle
18	NLA	412-278-010	Hood hinge
19	NLA	410-568-020	Right side panel
20	NLA	410-505-020	Front panel
21	880-094-666	880-094-666	Wire speed control assy

Item	Lincoln Stock #	Customer #	Description
22	246-041-666	246-041-666	Knob
23		246-178-000	Rocker switch
24		246-057-666	Rate switch
25		238-223-666	Ground cable

Not Shown

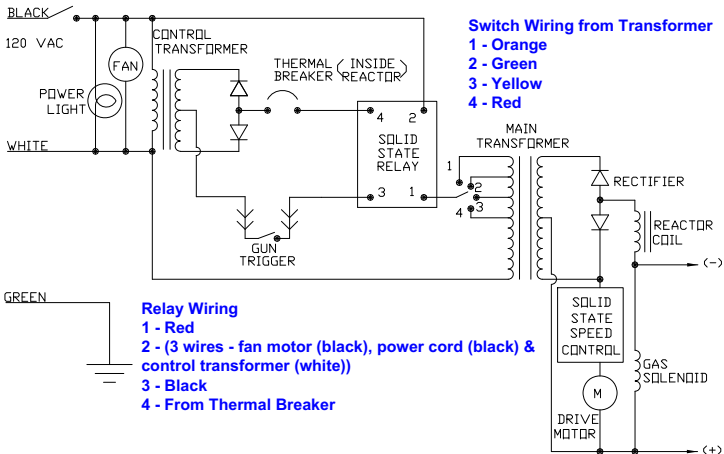
26	238-155-000	4320	10' Mig Gun less tip and nozzle
27	KP45-40-15	4331, KP1937-1	Steel liner
28	KP1959-1	4325, 334-374-000	Teflon liner
30		218-942-666	Polarity Jumper
31		412-280-666	Gun Connector
32	KP21T-50, KH725	43480, 334-203-300, KP1942-1, M15578	Steel welding nozzle
33	KP21T-62	43300, 334-210-300, KP1942-3	Aluminum welding nozzle
34	KP21-62-FAS	43290, 334-211-300, KP1956-1, M15577	Spot welding nozzle
35	KP11-25, KH710	43090, 334-203-300, KP2039-1B1, M15522	0.025 Contact Tips
36	KP11-30, KH711	43100, 334-160-300, KP2039-2B1, M15523	0.030 Contact Tips
37	334-228-000	334-228-000	Gas diffuser
38	Included with 334-227-000	334-217-000 (35-70)	Insulation
39		334-219-000 (35-80A-1)	Handle Cap
40	S11604-51	084-019-000	Set Screw, #8-32 X 1/8"
41	334-221-000	334-221-000	Trigger
42		860-744-000	Trigger harness
42	Standard Hardware Item		6-32 X 7/16" screw for trigger

10/22/2009

Model	Primary Input	Input Plug	Duty Cycle at Rated Output
117-028	120V, 15 amp	15A	20%

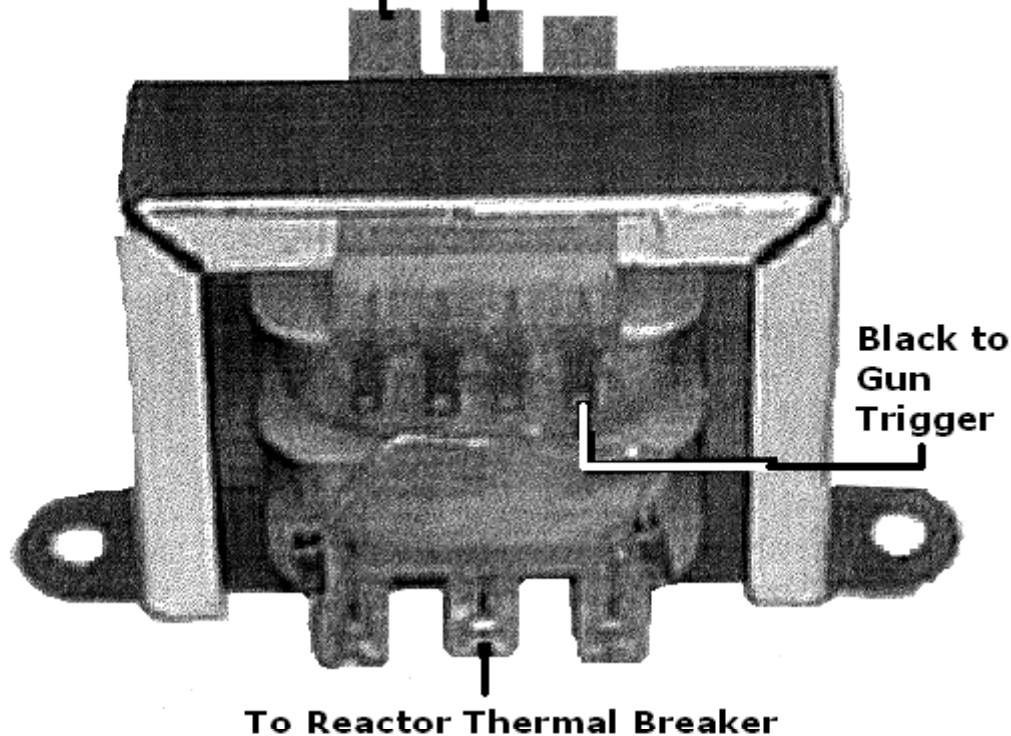
Rated Output	Voltage Settings	Agency Listing	Max Output
75 amps	4	UL	75 amps, gas only

117-026, 117-027, 117-028, 117-029



White from Power Cord

Black to Triac #2



**Black to
Gun
Trigger**

To Reactor Thermal Breaker

860-902-888 used on 117-026 to 117-029