

MACH HP

Oxy-cutting torch for automatic applications
The best available oxy-cutting technology

MACH HP oxy-cutting torch

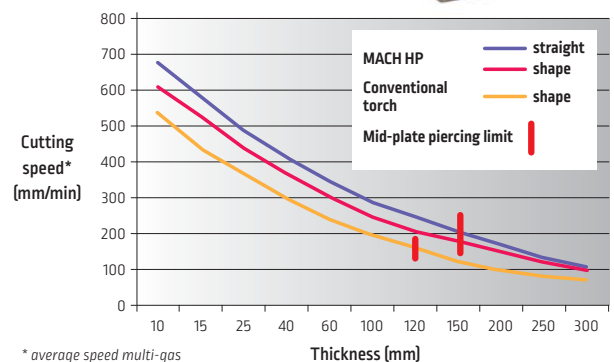
Lincoln Electric wishes to offer always the latest and best thermal cutting technologies to its customers. For oxy-cutting, with its new **MACH HP**, oxy-cutting torch Lincoln Electric offers you a tool which combines high cutting speeds with a simple method of tip replacement. Its robust construction coupled with the long lifetime of its consumables makes this a tool which is ideally adapted to numerous sectors of activity such as boiler-making, metallic construction and cutting sub-contractors.



High speed cutting nozzles

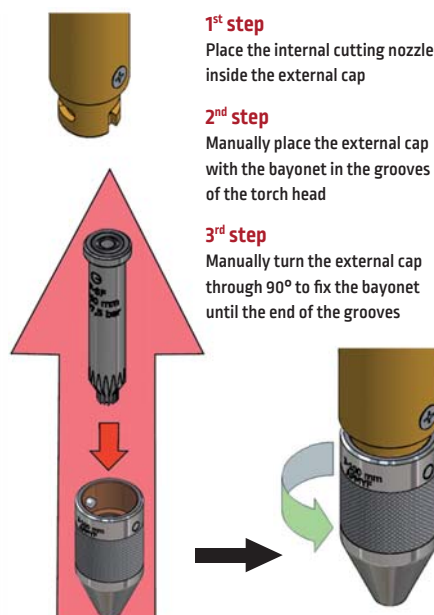
- › Specific shape and high quality machining of the cutting channel
- › Speed gain up to 30% compared to a conventional oxy-cutting torch
- › Cut quality until range 1/2 according to ISO 9013
- › Mid-plate piercing: 150 mm (HPC2 cycle).

Cut type



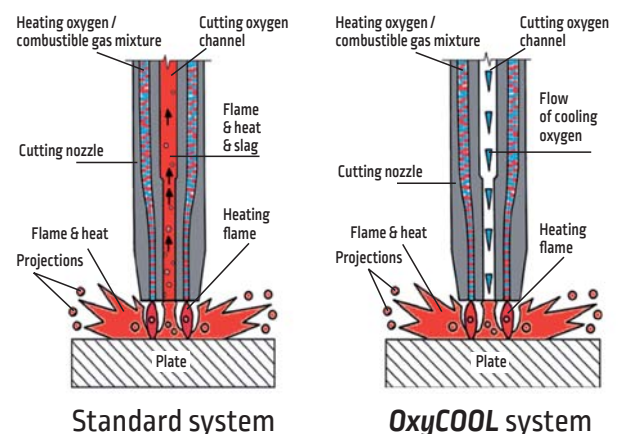
System **ToolFREE**

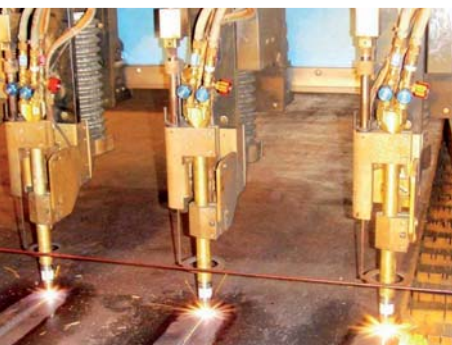
- › Tool free nozzle replacement
- › The bayonet system allows extremely rapid replacement



System **OxyCOOL**

- › Tool free nozzle replacement
- › Micro injection of oxygen to cool the cutting channel during pre-heating phases
- › Increases the nozzle lifetime and extends the cutting quality
- › Lifetime up to 2 times higher compared to a conventional oxy-cutting torch





The oxy-cutting torch **MACH HP** is designed and manufactured in accordance with the ISO 5172 standard. It operates with several gases including: propane, natural gas and acetylene. This torch can be fitted to all Lincoln Electric machines whether equipped with a plasma installation or not. It is also available as a "retrofit" for existing machines (Lincoln Electric or other makes).

EUROTOME 2, OXYTOME 2 or TWIN

Optimised performance of **MACH HP** oxy-cutting torches thanks to the HPC2 controller notably:

- A system for automatic process control (HPC2).
- Detection and capacitive height sensing using a sensor.
- A robust and simply maintained igniter.
- A height sensing probe and igniter retractable during plate piercing phases.
- Instantaneous passage between the heating and over-heating phases which limits melting of the cut edges.



GAS	PRODUCT	CODE	DESCRIPTION
Propane (C ₃ H ₈) Natural gas (CH ₄)	Torches	W000373192	MACH HP 320-32 Type P
		W000376780	MACH HP 110-32 Type P
	Valves	W000373218	Oxygen valve
		W000373220	Fuel gas valve
	External caps	W000373194	Heating nozzle MACH HP 150 mm
		W000373195	Heating nozzle MACH HP 300 mm
	Cutting nozzles	W000373196	Cutting nozzle MACH HP P7-15
		W000373197	Cutting nozzle MACH HP P15-25
		W000373198	Cutting nozzle MACH HP P25-40
		W000373199	Cutting nozzle MACH HP P40-60
		W000373200	Cutting nozzle MACH HP P60-100
		W000373201	Cutting nozzle MACH HP P100-150
		W000373202	Cutting nozzle MACH HP P100-200
		W000373203	Cutting nozzle MACH HP P200-250
		W000373204	Cutting nozzle MACH HP P250-300
Acetylene (C ₂ H ₂)	Torches	W000373191	MACH HP 320-32 Type A
		W000376781	MACH HP 110-32 Type A
	Valves	W000373218	Oxygen valve
		W000373220	Fuel gas valve
	External caps	W000373194	Heating nozzle MACH HP 150 mm
		W000373195	Heating nozzle MACH HP 300 mm
	Cutting nozzles	W000373205	Cutting nozzle MACH HP A6-10
		W000373206	Cutting nozzle MACH HP A10-25
		W000373207	Cutting nozzle MACH HP A25-40
		W000373208	Cutting nozzle MACH HP A40-60
		W000373209	Cutting nozzle MACH HP A60-100
		W000373210	Cutting nozzle MACH HP A100-150
		W000373211	Cutting nozzle MACH HP A150-230
Accessories	Seals	W000373213	Set of seals for MACH HP
	FBA	W000290912	SECURTOP 662 O 3-8 MD 3-8 FD (Heating oxygen)
		W000290913	SECURTOP 662 FG 3-8 MG 3-8 FG (Combustible gas)
		W000374692	MACH HP ARPF COUPE O ₂ (Cutting oxygen)
	Cleaning tools	W000373221	MACH HP conical tip cleaning
		W000373219	Brass brush for nozzles
	Miscellaneous	W000378807	Bevelling tool
		W000378804	Cutting tool for 450 mm strips

BEING PRESENT LOCALLY MAKES US MORE AWARE GLOBALLY



2.6 **160** **11 000** **120**
BILLION USD **ACTIVE IN 160** **EMPLOYEES WORLDWIDE** **YEARS OF EXPERIENCE**
REVENUE **COUNTRIES**
WORLDWIDE

CUSTOMER ASSISTANCE POLICY

The business of The Lincoln Electric Company® is manufacturing and selling high quality welding equipment, consumables, and cutting equipment. Our challenge is to meet the needs of our customers and to exceed their expectations. On occasion, purchasers may ask Lincoln Electric for information or advice about their use of our products. Our employees respond to inquiries to the best of their ability based on information provided to them by the customers and the knowledge they may have concerning the application. Our employees, however, are not in a position to verify the information provided or to evaluate the engineering requirements for the particular weldment. Accordingly, Lincoln Electric does not warrant or guarantee or assume any liability with respect to such information or advice. Moreover, the provision of such information or advice does not create, expand, or alter any warranty on our products. Any express or implied warranty that might arise from the information or advice, including any implied warranty of merchantability or any warranty of fitness for any customers' particular purpose is specifically disclaimed.

Lincoln Electric is a responsive manufacturer, but the selection and use of specific products sold by Lincoln Electric is solely within the control of, and remains the sole responsibility of the customer. Many variables beyond the control of Lincoln Electric affect the results obtained in applying these types of fabrication methods and service requirements.

Subject to Change – This information is accurate to the best of our knowledge at the time of printing. Please refer to www.lincolnelectric.eu for any updated information.



www.lincolnelectriceurope.com

