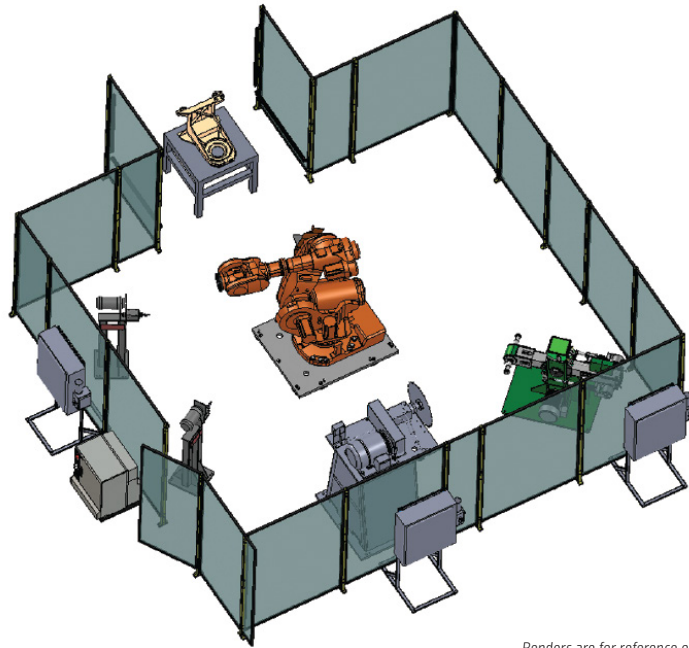


LOW VOLUME FINISHING CELL

ROBOTIC PART FINISHING SYSTEMS



Renders are for reference only

LOW VOLUME FINISHING CELL

KEY FEATURES

- Foundry-protected robot and controller with force control feature
- Multi-function end-of-arm tool with tool changer
- Holding fixtures with tool changer flange
- Input/output device
- Finishing fixture
- Casting infeed devices
- Aluminum casting finishing tools
- Iron/steel casting finishing tools
- Safety fence and system

INDUSTRIES

- Die casting
- Foundry

BENEFITS

- Flexible to customers' part finishing processes
- Modular robot training
- Cell is economical with no expensive end-of-arm tools or infeed devices
- Customer can build their own robotic holding fixtures
- Two or more castings can be finished at the same time
- Helps improve employee safety through automation of key processes
- May reduce consumable tool costs as a result of more accurate speeds and feed
- May reduce work-in-progress costs as a result of automation processes
- Achieve lower scrap volume from reducing manual finishing errors

CONTACT LINCOLN ELECTRIC AUTOMATION - COLUMBUS



1700 Jetway Blvd
Columbus, OH 43219



+1 (614) 471-5926



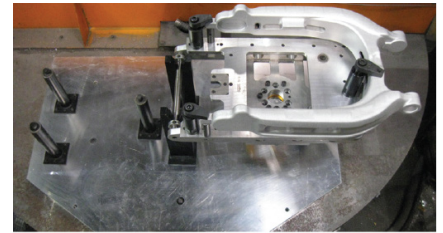
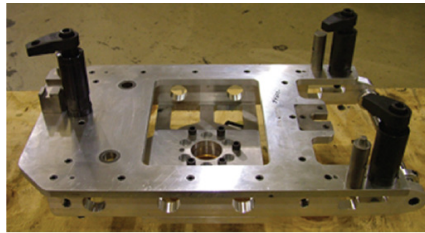
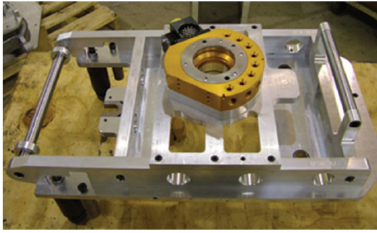
sales_columbus@lincolnelectric.com



www.lincolnelectric.com
www.rimrockcorp.com

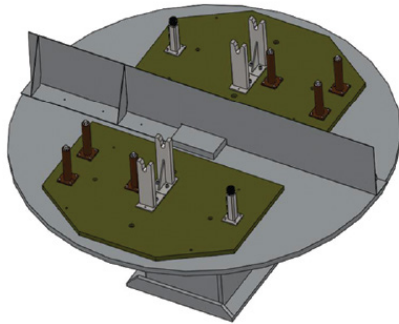
FINISHING FIXTURE CONCEPT

- Castings are manually bolted or clamped to the fixture (manual swing clamps are available)
- Fixture has robotic tool changer flange
- Two fixtures can be made to help increase cycle time by eliminating load/unload time



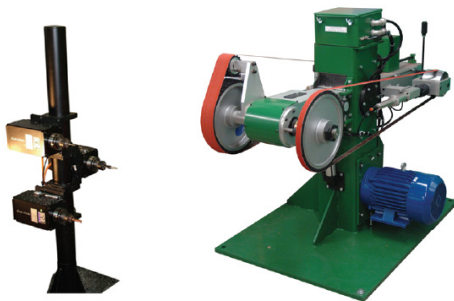
CASTING INFEEED DEVICES

- Simple turntable with light curtains
- Fixture located with simple pin arrangement
- Robot picks up using tool changer



ALUMINUM CASTING FINISHING TOOLS

- Electric spindles for various tools including deburring, milling, drilling, etc.
- Foundry riser saw with carbide-tipped blades
 - » 30hp with robust design
- Compliant belt sanders for flush finishing



IRON/STEEL CASTING FINISHING TOOLS

- Traditional media grinder
- Foundry cut-off saw with abrasive cut-off wheel
- Diamond wheels and cutters



All trademarks and registered trademarks are the property of their respective owners.

CUSTOMER ASSISTANCE POLICY

The business of Lincoln Electric is manufacturing and selling high quality welding equipment, automated welding systems, consumables, and cutting equipment. Our challenge is to meet the needs of our customers, who are experts in their fields, and to exceed their expectations. On occasion, purchasers may ask Lincoln Electric for information or technical information about their use of our products. Our employees respond to inquiries to the best of their ability based on information and specifications provided to them by the customers and the knowledge they may have concerning the application. Our employees, however, are not in a position to verify the information provided or to evaluate the engineering requirements for the particular weldment, or to provide engineering advice in relation to a specific situation or application. Accordingly, Lincoln Electric does not warrant or guarantee or assume any liability with respect to such information or communications. Moreover, the provision of such information or technical information does not create, expand, or alter any warranty on our products. Any express or implied warranty that might arise from the information or technical information, including any implied warranty of merchantability or any warranty of fitness for any customers' particular purpose or any other equivalent or similar warranty is specifically disclaimed.

Lincoln Electric is a responsive manufacturer, but the definition of specifications, and the selection and use of specific products sold by Lincoln Electric is solely within the control of, and remains the sole responsibility of the customer. Many variables beyond the control of Lincoln Electric affect the results obtained in applying these types of fabrication methods and service requirements.

THE LINCOLN ELECTRIC COMPANY
22801 Saint Clair Avenue - Cleveland, OH - 44117 - U.S.A.
Phone: +1 216.481.8100 - www.lincolnelectric.com