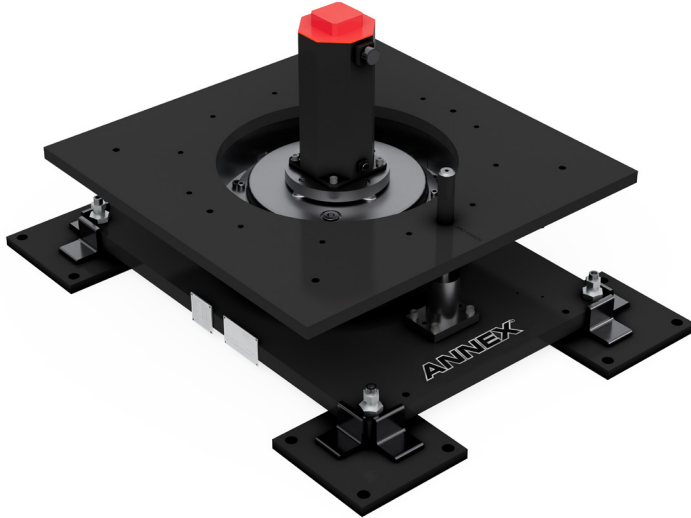


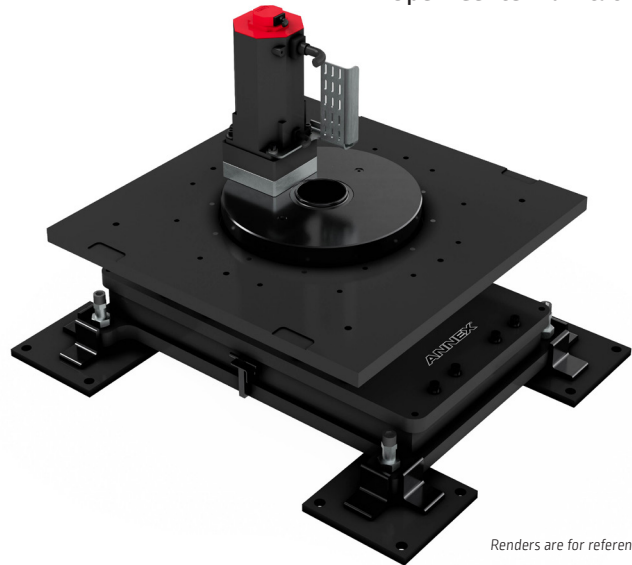
ANNEX TURNTABLE

AUTOMATED POSITIONERS

Inline Turntable



Open-Center Turntable



Renders are for reference only

INLINE/OPEN-CENTER TURNTABLE PART POSITIONERS

Adaptable to a wide range of processes including welding, laser, material handling, grinding, and cutting, the Lincoln Electric Automation ANNEX™ robotic positioners provide an unparalleled user-friendly experience for robotic positioning applications. The ANNEX positioners can either be robotically or servo controlled.

- Designed to have the ability to load parts and weld simultaneously for optimal productivity
- Multiple payloads available per customer requirements
- Designed to accommodate a variety of tool mixes and volumes

KEY FEATURES

- Accommodate a variety of tool bed lengths with custom options available
- Weld ground isolation reduces risk of electrical damage to the positioner or robot controller
- Easy integration with most major robot manufacturers including FANUC®, ABB®, Yaskawa®, KUKA®, and Kawasaki®
- Built for continuous performance in demanding applications
- Designed for maximum static and dynamic stiffness, reducing air-cut speeds

BENEFITS

- Primary axis sweep of 180°
- Simplified cable management
- Multiple supplier options
- ANSI/RIA safety compliant

INDUSTRIES

- Automotive
- Transportation
- General

CONTACT LINCOLN ELECTRIC AUTOMATION - BETTENDORF



3129 State St
Bettendorf, IA 52722



+1 (563) 355-4812



sales_bettendorf@lincolnelectric.com



www.lincolnelectric.com

Publication LEA-030923TM1-07

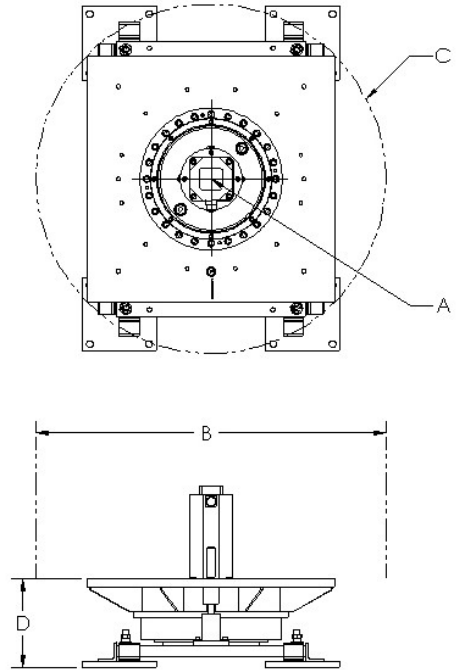
© Lincoln Global Inc. All Rights Reserved. All trademarks and registered trademarks are the property of their respective owners.
www.lincolnelectric.com/automation



PRODUCT SPECIFICATIONS

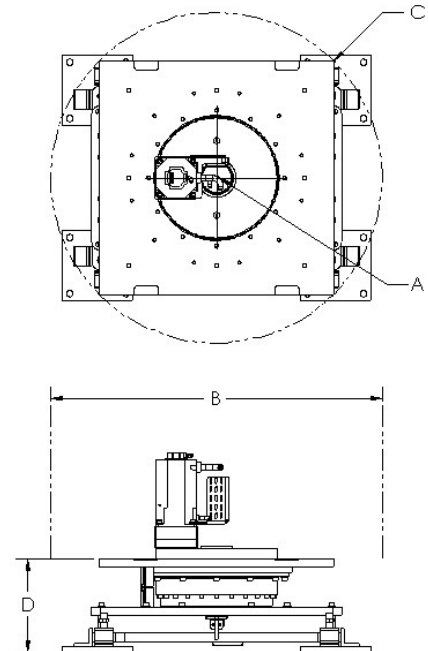
INLINE TURNTABLE

Product Number	Model	180° Sweep Time (A)	Turntable Diameter (B)	Sweep Diameter (C)	Max Height (D)	Max Payload
AD2483-1	32T	2.50 sec	2.54 m	1.42 m	365 mm	1800 kg
		2.80 sec				1360 kg
	45T	3.00 sec	3.81 m			2600 kg
		3.50 sec				4600 kg
	90T	4.00 sec	4.80 m			6000 kg
		3.50 sec				4000 kg
9BT	4.00 sec	4.80 m	4000 kg			
	4.50 sec		6350 kg			
Custom	Based on Customer Specifications					



OPEN-CENTER TURNTABLE

Product Number	Model	180° Sweep Time (A)	Turntable Diameter (B)	Sweep Diameter (C)	Max Height (D)	Max Payload
AD2484-1	50T-OC	3.00 sec	3.81 m	1.42 m	405 mm	2600 kg
	90T-OC	3.50 sec				6000 kg
	9BT-OC	5.00 sec	4.80 m		1.77 m	295 mm
Custom	Based on Customer Specifications					



Important Note: Changes from recommended motor sizing, payload, duty cycles, cable routing, weld grounding (if applicable), other system specifications (i.e. servo parameters, controller stop parameter) and/or modifications may affect cycle times and overall performance. User assumes all responsibility for proper rigging, installation and machine setting alignments of product(s). Manufacturer's warranty is void to the extent any failure caused by improper installation, modification or operation by customer.

CUSTOMER ASSISTANCE POLICY

The business of Lincoln Electric is manufacturing and selling high quality welding equipment, automated welding systems, consumables, and cutting equipment. Our challenge is to meet the needs of our customers, who are experts in their fields, and to exceed their expectations. On occasion, purchasers may ask Lincoln Electric for information or technical information about their use of our products. Our employees respond to inquiries to the best of their ability based on information and specifications provided to them by the customers and the knowledge they may have concerning the application. Our employees, however, are not in a position to verify the information provided or to evaluate the engineering requirements for the particular weldment, or to provide engineering advice in relation to a specific situation or application. Accordingly, Lincoln Electric does not warrant or guarantee or assume any liability with respect to such information or communications. Moreover, the provision of such information or technical information does not create, expand, or alter any warranty on our products. Any express or implied warranty that might arise from the information or technical information, including any implied warranty of merchantability or any warranty of fitness for any customers' particular purpose or any other equivalent or similar warranty is specifically disclaimed.

Lincoln Electric is a responsive manufacturer, but the definition of specifications, and the selection and use of specific products sold by Lincoln Electric is solely within the control of, and remains the sole responsibility of the customer. Many variables beyond the control of Lincoln Electric affect the results obtained in applying these types of fabrication methods and service requirements.

THE LINCOLN ELECTRIC COMPANY
 22801 Saint Clair Avenue · Cleveland, OH · 44117 · U.S.A.
 Phone: +1 216.481.8100 · www.lincolnelectric.com