

# LINC GUN FX II

## FUME EXTRACTION GUNS

European norm  
requirement for MIG guns

EN 60974-7

Wear parts compatible with  
European standards

Easy pivoting  
handle

Extended rear cable support  
for smooth wire feeding

High capture  
performance

[lincolnelectric.eu](http://lincolnelectric.eu)

**LINCOLN**<sup>®</sup>  
**ELECTRIC**

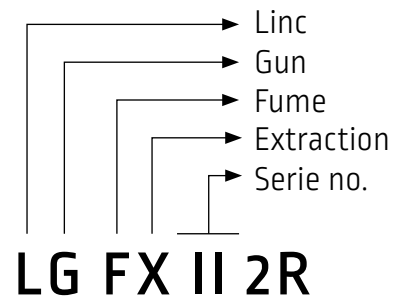




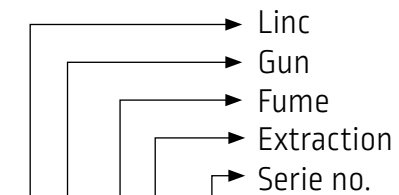
## LINC GUN FX II FUME EXTRACTION GUNS


LINC GUN FX II fume guns are high-performance extraction tools designed for MIG-MAG welding. They use an indirect capture system that delivers excellent fume extraction efficiency without the quality of the weld bead. The guns are available in a full range from 225 A to 410 A, and come with either air or water cooling options. All models comply with the EN 60974-7 standard.

The latest LGFX II torch developments, combined with our ergonomic booms, provide exceptional manoeuvrability and easy access to all welding points on the work piece.



Air cooled   
Amperage level



Dual Flow  
Water cooled   
Amperage level



# PRODUCT ADVANTAGES

Single-section bundle (Ø 40 mm) or double-section bundle (Ø 40/50 mm), depending on the model.

**Protective leather sleeve** on the bundle – 1,5 m in length.

**Ball joint** at the rear of the handle for enhanced manoeuvrability.

**Tellurium-copper (Cu-Te) screw-in nozzle** – available in Ø 12, 15, or 19 mm.

**Large capture sphere** with an efficiency rate close to 80%.

**Manual airflow adjustment valve.**

**Connection diameter** compatible with 50 mm hose.

**Dual Flow version:** allows modulation of the torch extraction rate based on the type of part being welded



European norm requirement for MIG guns



Easy pivoting handle



Wear parts compatible with European standards



Extended rear cable support for smooth wire feeding



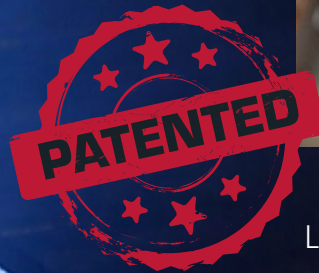
High capture performance

# SEE THE DIFFERENCES

## STANDARD



## DUAL FLOW (DF)



Click and  
change  
the flow

LINCOLN ELECTRIC has patented the DUAL FLOW torch, which enables welders to adjust extraction power during welding simply by pressing a microswitch located on the torch handle. This ensures continuous fume protection and consistent welding quality through precise airflow control.

When combined with LGFX II extraction torches equipped with microswitches, the Dual Flow system provides a nominal extraction rate during the entire welding process and automatically reduce airflow when working in confined areas.

The change in extraction rate is activated directly from the torch handle, with a choice of 2T or 4T modes depending on the welder's preference.

# NOZZLE

The different nozzle designs enable efficient extraction of welding fumes.

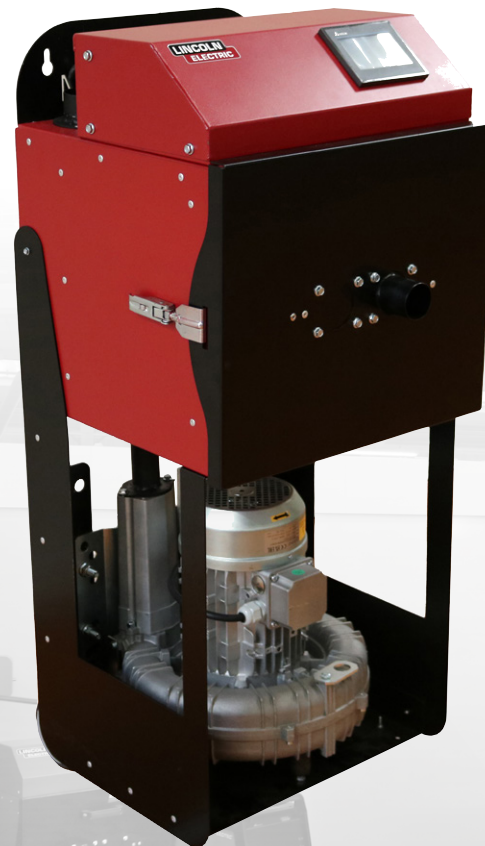
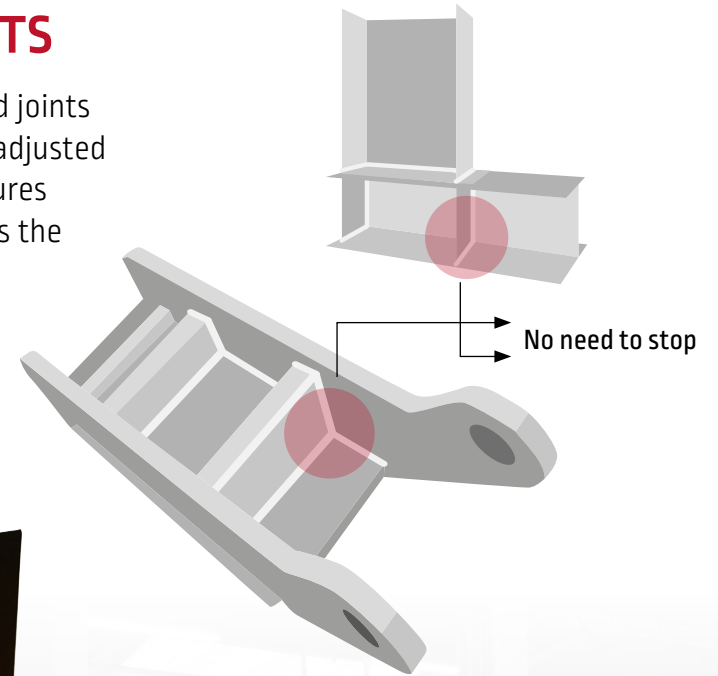


These guns are available with various neck lengths and screw-in nozzle sizes to suit different applications.

# DUAL FLOW SOLUTION

## TYPES OF WELDED JOINTS

For mechanical welding, typical welded joints require the extraction flow rate to be adjusted without interrupting the arc. This ensures continuous productivity and eliminates the need to restart the welding process.



## LINC EXTRACTOR

To order

EM61000624



## LGFX II 2R



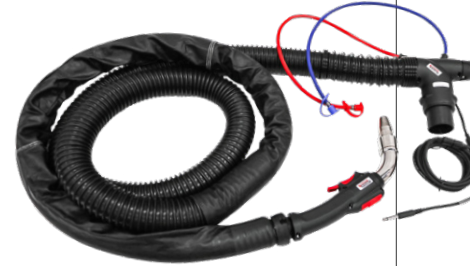
Output  
CO<sub>2</sub>: **250A**  
Ar/CO<sub>2</sub>: **225A**

## LGFX II 4R



Output  
CO<sub>2</sub>: **400A**  
Ar/CO<sub>2</sub>: **320A**

## LGFX II 4W



Output  
CO<sub>2</sub>: **360A**  
Ar/CO<sub>2</sub>: **320A**

## LGFX II 5W



Output  
CO<sub>2</sub>: **450A**  
Ar/CO<sub>2</sub>: **410A**

## GUNS RANGE

MODEL		AIR COOLING				WATER COOLING			
		LGFX II 2R	LGFX II 2R DF	LGFX II 4R	LGFX II 4R DF	LGFX II 4W	LGFX II 4W DF	LGFX II 5W	LGFX II 5W DF
Duty cycle	CO <sub>2</sub>	250 A @ 60%		400 A @ 60%		360 A @ 100%		450 A @ 100%	
	Ar/CO <sub>2</sub>	225 A @ 60%		320 A @ 60%		320 A @ 100%		410 A @ 100%	
Contact tip		M6		M8 x30					
Nozzle diameter		12 mm		15 - 19 mm					
Gooseneck angle		45°							
Bundle diameter (mm)		40			40/50				
Connecting hose dia (mm)		50							
Weight (kg)		1.18		1.465		1.54		1.595	
Max capture performance	For speed 0,25m/s	Flow : 92 m <sup>3</sup> /h / Vacuum 11,500 Pa		-		Flow : 80 m <sup>3</sup> /h / Vacuum 13,500 Pa		Flow : 80 m <sup>3</sup> /h / Vacuum 13,600 Pa	
	For speed 0,35m/s	-		Flow : 80 m <sup>3</sup> /h / Vacuum 13,300 Pa		Flow : 80 m <sup>3</sup> /h / Vacuum 13,500 Pa		Flow : 80 m <sup>3</sup> /h / Vacuum 13,600 Pa	
To order		LGFX II 2R	LGFX II 2R DF	LGFX II 4R	LGFX II 4R DF	LGFX II 4W	LGFX II 4W DF	LGFX II 5W	LGFX II 5W DF
	3 m	EM61000784	EM61000796	EM61000787	EM61000799	EM61000790	EM61000802	EM61000793	EM61000805
	4 m	EM61000785	EM61000797	EM61000788	EM61000800	EM61000791	EM61000803	EM61000794	EM61000806
	4 m (LN version)	-	-	EM61000858	EM61000861	EM61000859	EM61000862	EM61000860	EM61000863
5 m	EM61000786	EM61000798	EM61000789	EM61000801	EM61000792	EM61000804	EM61000795	EM61000807	

# WEAR PARTS

## LGFX II 2R

Nozzle	
Con. D12	EM61000575
Con. D15	EM61000576

Steel	Ø mm	Contact tip
	0.8	W000010826
	0.8	W000010830 *
	1.0	W000010827
	1.0	W000010831 *
	1.2	W000010828
1.2	W000010832 *	

Contact tip holder	
W000383747	

Insulating diffuser	
Standard	W000401814
Ceramic	W000383746

Nozzle insulator	
EM61000829	

Nozzle holder	
EM61000809	

## LGFX II 4R/4W

Nozzle	
Con. D15	EM61000521
Con. D19	EM61000522

Steel	Ø mm	Contact tip
	1.0	W000010835
	1.0	W000010841 *
	1.2	W000010836
	1.2	W000010842 *
	1.6	W000010837
1.6	W000010843 *	

Contact tip holder	
W000010724	

Insulating diffuser	
Standard	W000010785
High temp	W000010784

Nozzle insulator	
EM61000832	

Nozzle holder	
EM61000831	

## LGFX II 5W

Nozzle	
Con. D15	EM61000521
Con. D19	EM61000522

Steel	Ø mm	Contact tip
	1.0	W000010835
	1.0	W000010841 *
	1.2	W000010836
	1.2	W000010842 *
	1.6	W000010837
1.6	W000010843 *	

Contact tip holder	
W000010724	

Insulating diffuser	
Standard	W000010785
High temp	W000010784

Nozzle insulator	
EM61000835	

O-ring seal	
W000384533	

Cooling ring	
EM61000836	

Nozzle holder	
EM61000834	

Insulating washer	
EM61000393	



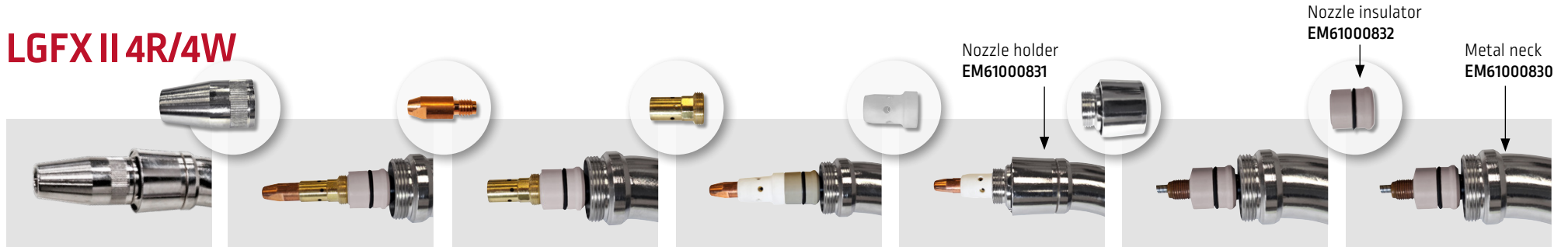
Wear parts supplied with the gun

\* CuCrZr contact tips

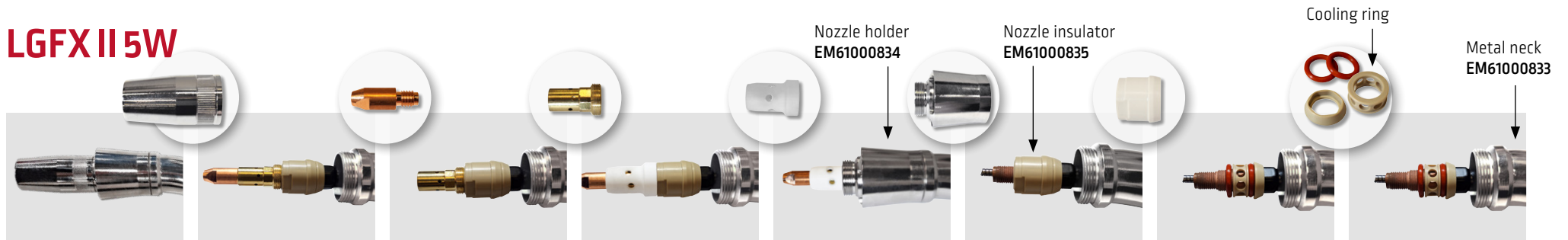
## LGFX II 2R



## LGFX II 4R/4W



## LGFX II 5W



### CUSTOMER ASSISTANCE POLICY

The business of The Lincoln Electric Company® is manufacturing and selling high quality welding equipment, consumables, and cutting equipment. Our challenge is to meet the needs of our customers and to exceed their expectations. On occasion, purchasers may ask Lincoln Electric for information or advice about their use of our products. Our employees respond to inquiries to the best of their ability based on information provided to them by the customers and the knowledge they may have concerning the application. Our employees, however, are not in a position to verify the information provided or to evaluate the engineering requirements for the particular weldment. Accordingly, Lincoln Electric does not warrant or guarantee or assume any liability with respect to such information or advice. Moreover, the provision of such information or advice does not create, expand, or alter any warranty on our products. Any express or implied warranty that might arise from the information or advice, including any implied warranty of merchantability or any warranty of fitness for any customers' particular purpose is specifically disclaimed.

Lincoln Electric is a responsive manufacturer, but the selection and use of specific products sold by Lincoln Electric is solely within the control of, and remains the sole responsibility of the customer. Many variables beyond the control of Lincoln Electric affect the results obtained in applying these types of fabrication methods and service requirements.

Subject to Change – This information is accurate to the best of our knowledge at the time of printing. Please refer to [www.lincolnelectric.eu](http://www.lincolnelectric.eu) for any updated information.



[www.lincolnelectric.eu](http://www.lincolnelectric.eu)

**LINCOLN**  
**ELECTRIC**