

Service Notice N°: ESN0081 Rev.01

Date: 23 January 2023

SPEEDTEC200C / SPEEDTEC215C / PRESTOMIG210MP / CITOMIG210MP Some fields on the UI display are not readable

Product	K Number	Code Number	Serial Numbers
SPEEDTEC 200C	K14099-1 K14099-2	50585 50587	Produced between April 2022 and August 2022
SPEEDTEC 215C	K14146-1	50314	
PRESTOMIG 210MP	W000403576 W100000009	50397	
CITOMIG 210MP	W000403578	50399	



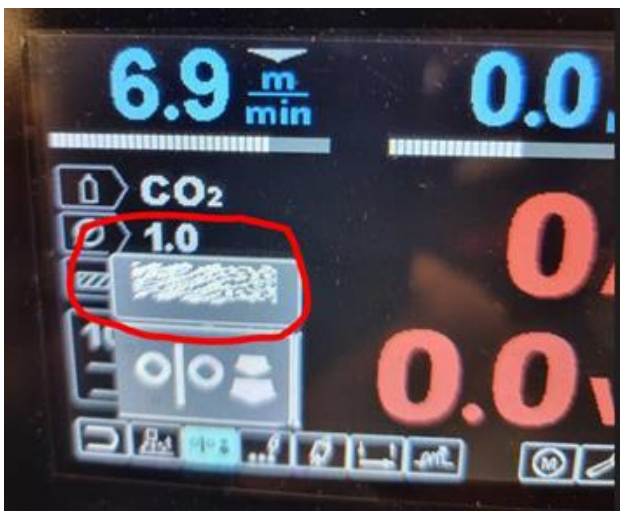
WARNING

Be sure that only qualified individuals perform all installation, operation, maintenance and repair procedures. Lincoln Electric is not responsible for damages caused by improper installation, improper care or abnormal operation.

Before opening or disassembling any parts of the product, the power must be turned OFF and the product must be disconnected from the input power source. Only Lincoln trained service technicians are authorized to perform these modifications.

Explanation of the Problem

Some fields on the UI display could be not readable like the example below:



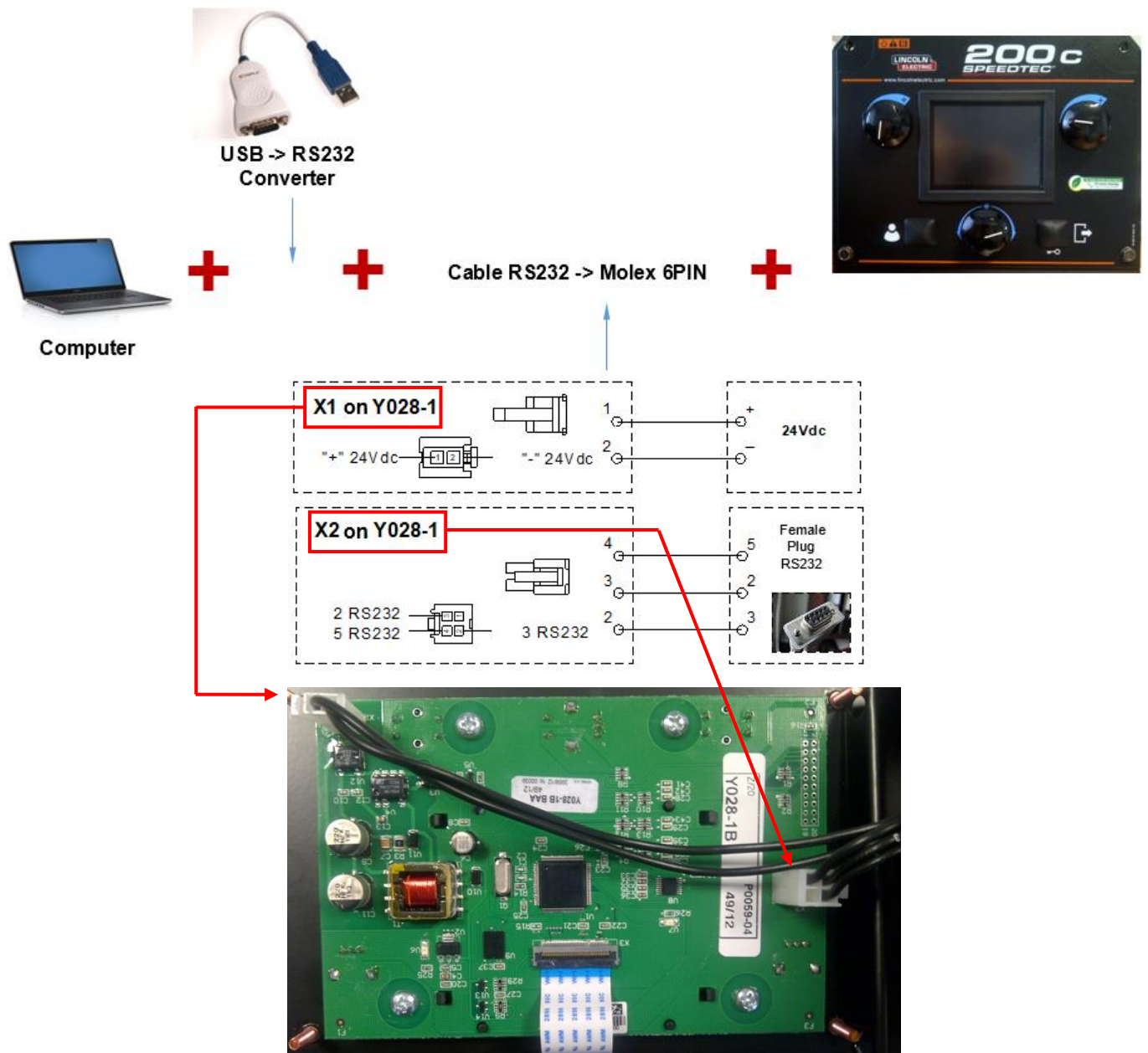
Correction of the Problem

Problem can be solved by loading new software into User interface Y028-1 board

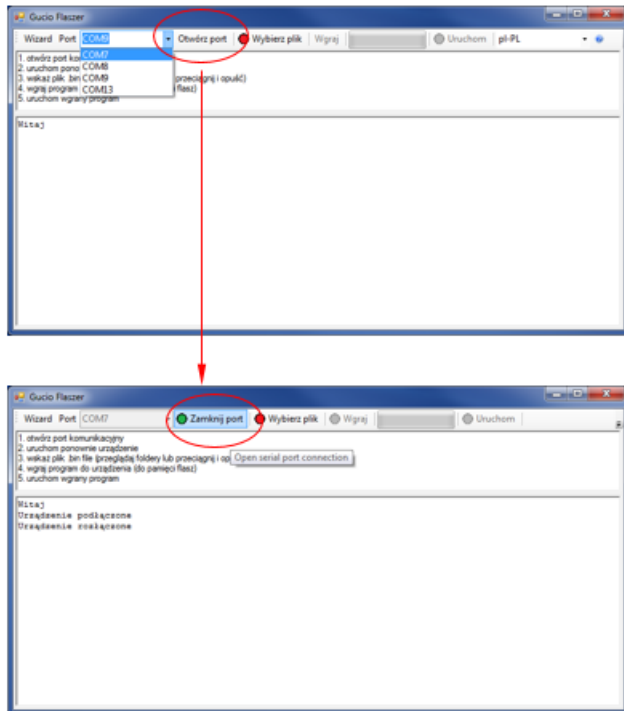
Necessary tools and software:

1. USB – RS232 adapter or a computer with physical RS232 COM port,
2. Harness for connection RS232 adapter to the machine (see schematic how to built it)
3. GucioFlasher software (contact your local Lincoln Service Dept.)
4. P0076-05 software set for brand LINCOLN CE version (contact your local Lincoln Service Dept.)
5. P0106-05 software set for brand SAF-FRO (contact your local Lincoln Service Dept.)
6. P0107-05 software set for brand OERLOKON (contact your local Lincoln Service Dept.)

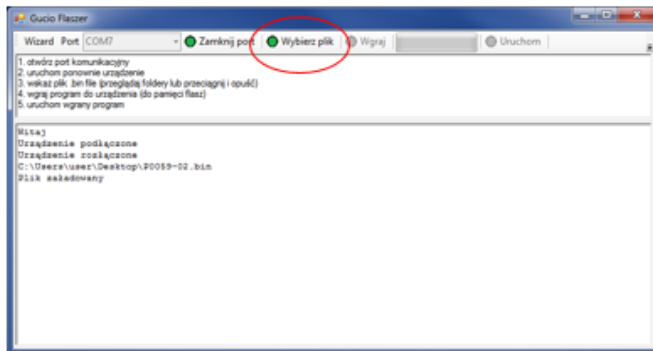
Y028-1 Software Update Instructions



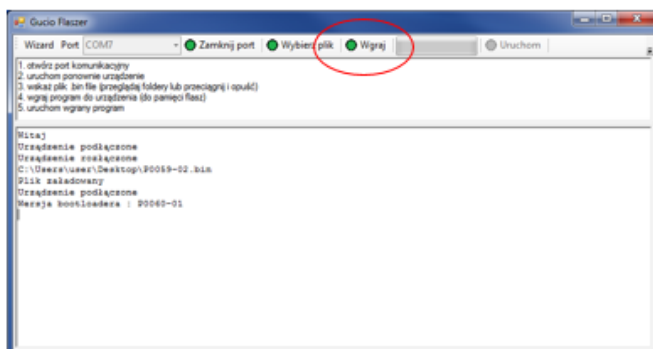
1. Run "Gucio Flaszcer.exe" file
2. Choose correct serial port – the one where RS232 cable or converter USB->RS232 is connected
3. Press the "Open Port = Otwórz port" button - label changes to "Close port = Zamknij port", and the color of the icon on the green



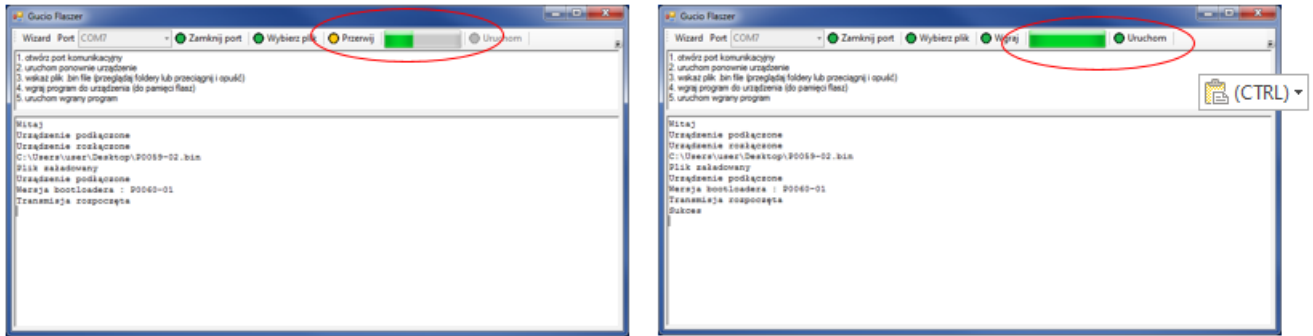
4. Klik „Choose file = Wybierz plik” and choose the software file
5. Move file to "Gucio Flaszcer," window - „Choose file = Wybierz plik" icon change color to green



6. Connect RS232 plug to socket X2 on Y028-1 board and +24V to socket X1
7. Icon "Wgraj" change color to green



8. Click "Wgraj". Programming process will be indicated in the status and progress bars
9. When process finished – icon "Uruchom" will change to green color



10. Click „Uruchom”. On the TFT display shows: Lincoln Electric LOGO and for few seconds Error 003



11. Turn OFF supply and unplug plugs from X2 and X1 socket