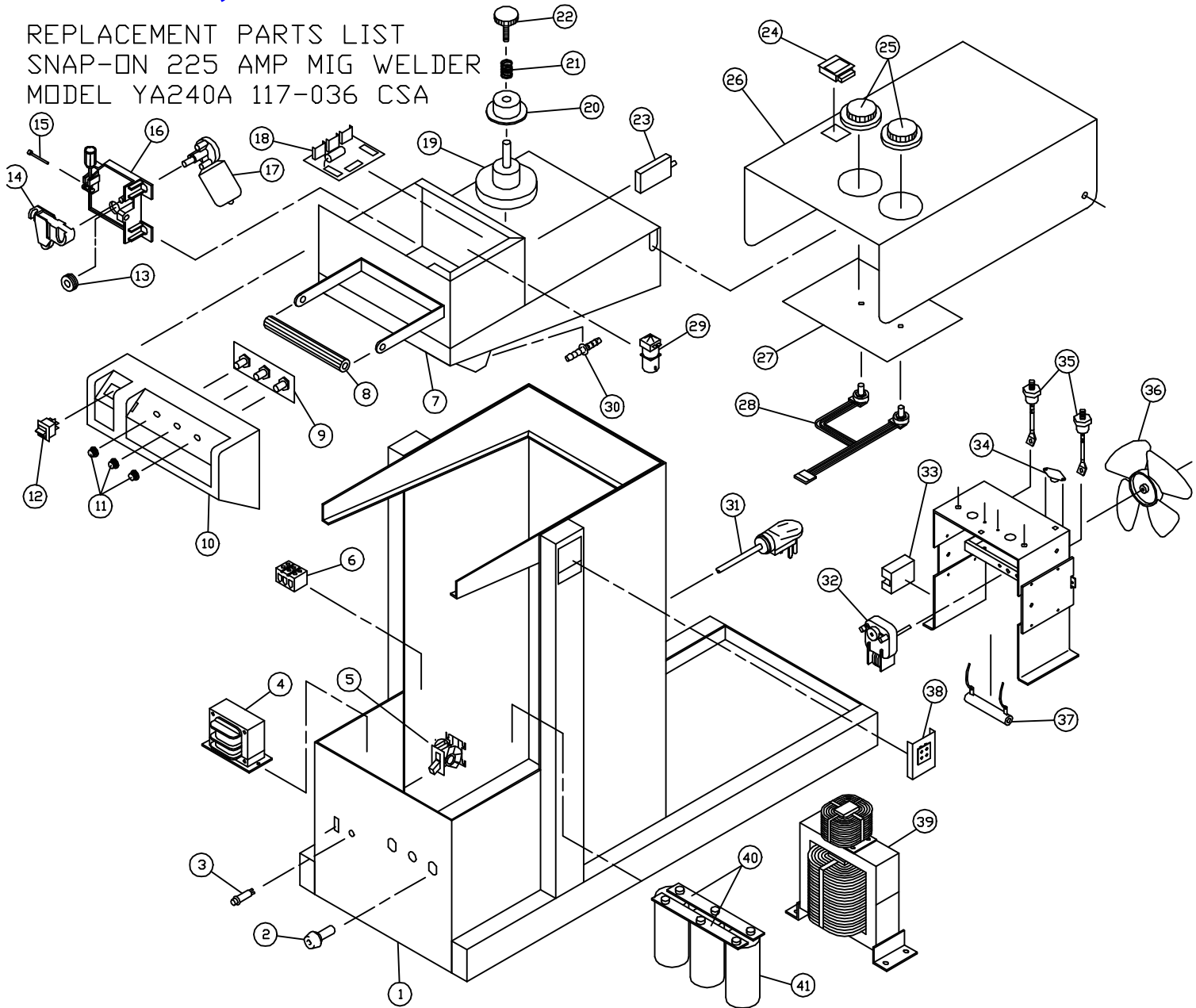


117-036, YA240A

REPLACEMENT PARTS LIST
SNAP-ON 225 AMP MIG WELDER
MODEL YA240A 117-036 CSA



117-036, YA240A, 225 Amp Mig

Item	Lincoln Stock #	Customer #	Description
1	NLA	410-595-030	Front panel
2	312-045-666	312-045-666	Receptacle assy.
3		245-095-666	Power Light
4		860-817-888, 880-041-888	Control Transformer, 230Vac to 24Vac, 6 amp
5	216-010-666	216-010-666	Power switch
6		239-057-666	Terminal block
7	NLA	880-045-666	Undercarriage assy.
8		246-161-666	Handle
9		880-114-666	Spot/Stitch circuit board
10	NLA	860-983-666	Molded nose
11		246-127-666	Knob 1"
12		216-077-666	Paddle switch
13	310-122-500	4323	Drive roller, 0.025 / 0.030 / 0.035
	860-616-002	4324	Aluminum driver roller
14	Included w/ #16	880-111-666	Tensioner assy.
15	Included w/ #16	239-123-666, 239-208-000	Inlet guide tube
16	880-130-666	880-130-666	Drive base assy kit
17	S27985-4 with 880-130 base hole enlarged & terminals changed	216-079-666	Drive motor/gearbox
18	880-113-666	880-113-666	Main circuit board assy
19	312-066-666	312-066-666	Spindle/tension kit
20	312-110-666	312-110-666	Spool adaptor
21		330-029-666	Tension spring (see #19)
22		246-215-666	Tension knob (see #19)
23		246-365-000	Circuit breaker for drive motor
24	NLA	312-042-666	Slide switch
25		246-158-666	Knob 2 3/4"
26	NLA	880-240-666	Hood
27	NLA	410-516-026	Drive box cover
28	880-052-666	860-936-666	Heat/Wire speed harness w/pots
29	246-086-666	246-212-666	Gas Solenoid
30		253-047-666	Hose barb fitting
31	S13699-8	246-178-666	Power Cord, 8/3
32	216-099-666	216-085-666	Fan motor
33	216-062-666	216-062-666	Triac relay
34	216-053-666	216-053-666	Thermostat

Item	Lincoln Stock #	Customer #	Description
35	244-070-666	244-070-666	Diode (each)
36	316-010-000	316-010-000	Fan blade
37		880-158-666	Resistor assy.
38	NLA	860-832-666	Drive head lock
39	NLA	880-050-888	Transformer
40	NLA	412-202-666	Bus bar
41	213-018-666	213-018-666	Capacitor

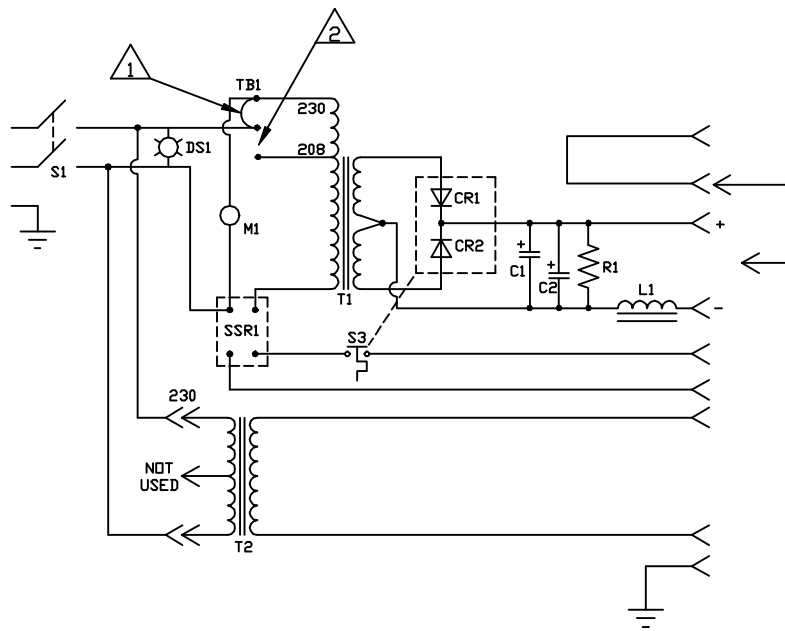
Not Shown

42	334-303-001	334-286-666	Gas regulator
43	059-245-666	059-245-666	Gas hose
44		238-009-500	Ground cable w/plug & clamp, 12
45	K910-1	41001	Ground clamp only
46		413-047-666	Rear wheels
47		413-041-666	Front caster
48		238-193-000	Polarity jumper cable assy
49	238-393-000	4365	Complete gun assy 12ft
50	238-296-666	238-296-666	Complete gun assy 15ft
51a	KP44-3545-15	334-375-000, 4370,KP1933-1	Steel liner for 19/64" opening (approx. 1-1-90 & newer)
51b	KP45-40-15	4331, KP1937-1, 334-229-001	Steel liner for 15/64" opening (approx. 12-31-89 & older)
52a	KP42N-3545-15	334-376-000, 4368,KP1955-1	Teflon liner for 19/64" opening (approx. 1-1-90 & newer)
52b	KP1959-1	4325, 334-230-001, 334-374-000	Teflon liner for 15/64" opening (approx. 12-31-89 & older)
53	334-363-000	334-363-000	Gun gas diffuser
54	334-252-000	334-252-000	Gun conductor Tube
55	334-255-000	334-255-000	Gun trigger (96KL-R)
56		334-253-000	Gun handle cap (250-86C)
57	S11604-51	084-019-000	Liner set screw #8-32 x 1/8"
58		334-254-000	Handle case (90206)
59	KP21T-50	43480, 334-203-300, KP1942-1, M15578	Steel welding nozzle
60	KP21-62FAS	43290, 334-211-300, KP1956-1, M15577	Spot welding nozzle
61	KP21T-62	43300, 334-210-300, KP1942-3	Aluminum welding nozzle
62	KP11-25	43090, 334-159-300, KP2039-1B1, M15522	0.025 contact tip
63	KP11-30	43100, 334-160-300, KP2039-2B1, M15523	0.030 contact tip
64	KP11-35	43110, 334-161-300, KP2039-3B1, M15524	0.035 contact tip
65	KP11-45	43390, 334-202-300, KP2039-4B1, M57242	0.045 contact tip
66		860-822-000	Umbilical cord (hard wired into base)

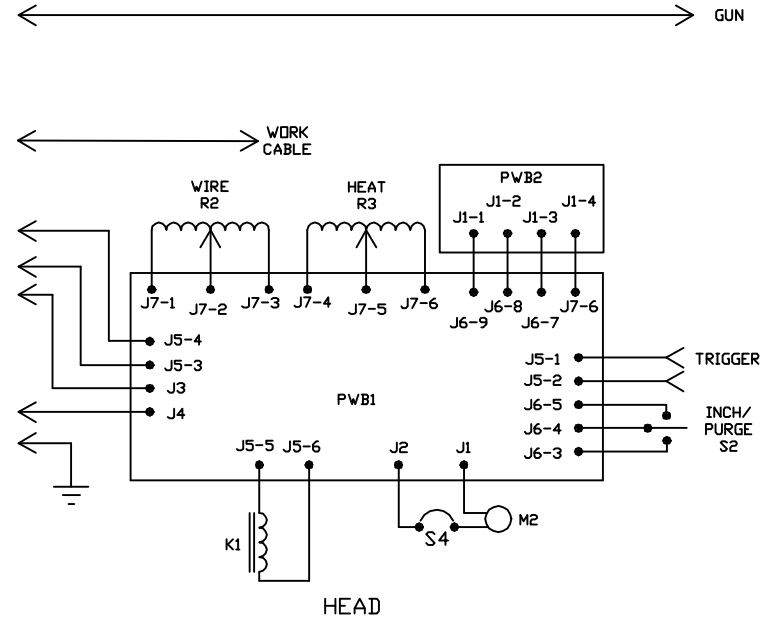
1042912

Model	Primary Input	Input Plug	Duty Cycle at Rated Output
117-036	208/230V, 44A/40A	50A, 50-P	60%

Rated Output	Voltage Settings	Agency Listing	Max Output
225 amps	Infinite	CSA	250 amps



POWER PACK



HEAD

MODELS 117-036, 117-056

117-036, YA240A

NOTES:

- ① SHOWN WIRED FOR 230 VOLT OPERATION.
- ② FOR 208 VOLT OPERATION, MOVE JUMPER TO THIS POSITION.

SYM	DESCRIPTION
T1	MAIN TRANSFORMER
T2	CONTROL TRANSFORMER
S1	POWER SWITCH
S2	INCH/PURGE
S3	THERMAL BREAKER
S4	CIRCUIT BREAKER
DS1	INDICATOR LIGHT
SSR1	SOLID STATE RELAY 70A
TB1	TERMINAL BLOCK 208/230V
M1	FAN MOTOR 240V
CR1,CR2	DIODE 150 AMP 300V
C1,C2	CAPACITOR 45,000 MFD 45V
R1	RESISTOR 12.5 OHM 100W
L1	REACTOR 160 AMP
PWB1	CONTROL CIRCUIT BOARD
PWB2	SPOT/STITCH BOARD
K1	GAS SOLENOID N.C.
M2	WIRE FEED DRIVE MOTOR
R2	POTENTIOMETER WIRE SPEED
R3	POTENTIOMETER HEAT CONTROL