

# LINC-CUT™

FIBER LASER CNC CUTTING SYSTEMS

YOUR NEXT BIG UPGRADE

# WHAT IS THE CHALLENGE?

It's not only expensive to hand-cut or outsource hundreds of parts, but relying on inferior processes or third party vendors to deliver high quality parts in a timely manner, is inefficient and time consuming.

Steel fabricators are facing several challenges globally, including fluctuating steel prices due to trade tensions and changes in demand, labor shortages, stricter environmental regulations, competition from alternative materials, and the need to invest in new equipment and training to keep up with technological advancements.



TIME/COST  
INTENSIVE



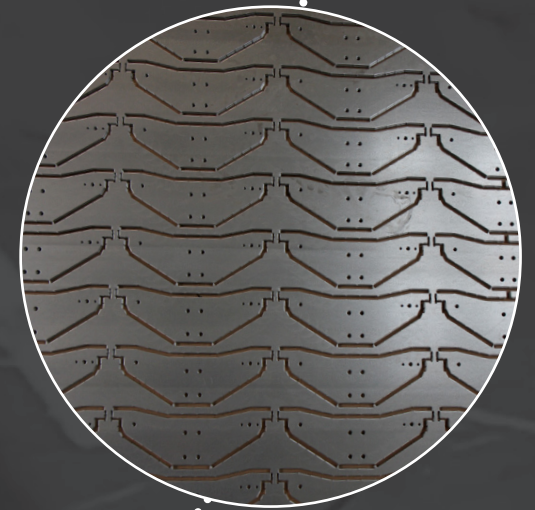
LABOR  
SHORTAGES



QUALITY  
CONTROL



HEALTH AND  
SAFETY RISKS



# LINC-CUT SOLUTIONS

LINC-CUT™ CNC Fiber laser cutting systems were developed to offer exceptional and repeatable cut quality for sheet metal fabrication needs, and do so more safely and cost effectively.

**They say: Quality over Quantity. We asked: Why not both?**  
 With motion speeds up to 110m/min and laser output up to 12kW, Linc-Cut FIBER Laser Cutting systems can production cut up to 1.5 inch carbon steel quickly, easily and with no compromise to quality.



SAVE VALUABLE TIME



MAKE IT A ONE-PERSON-JOB







INCREASE CUT QUALITY

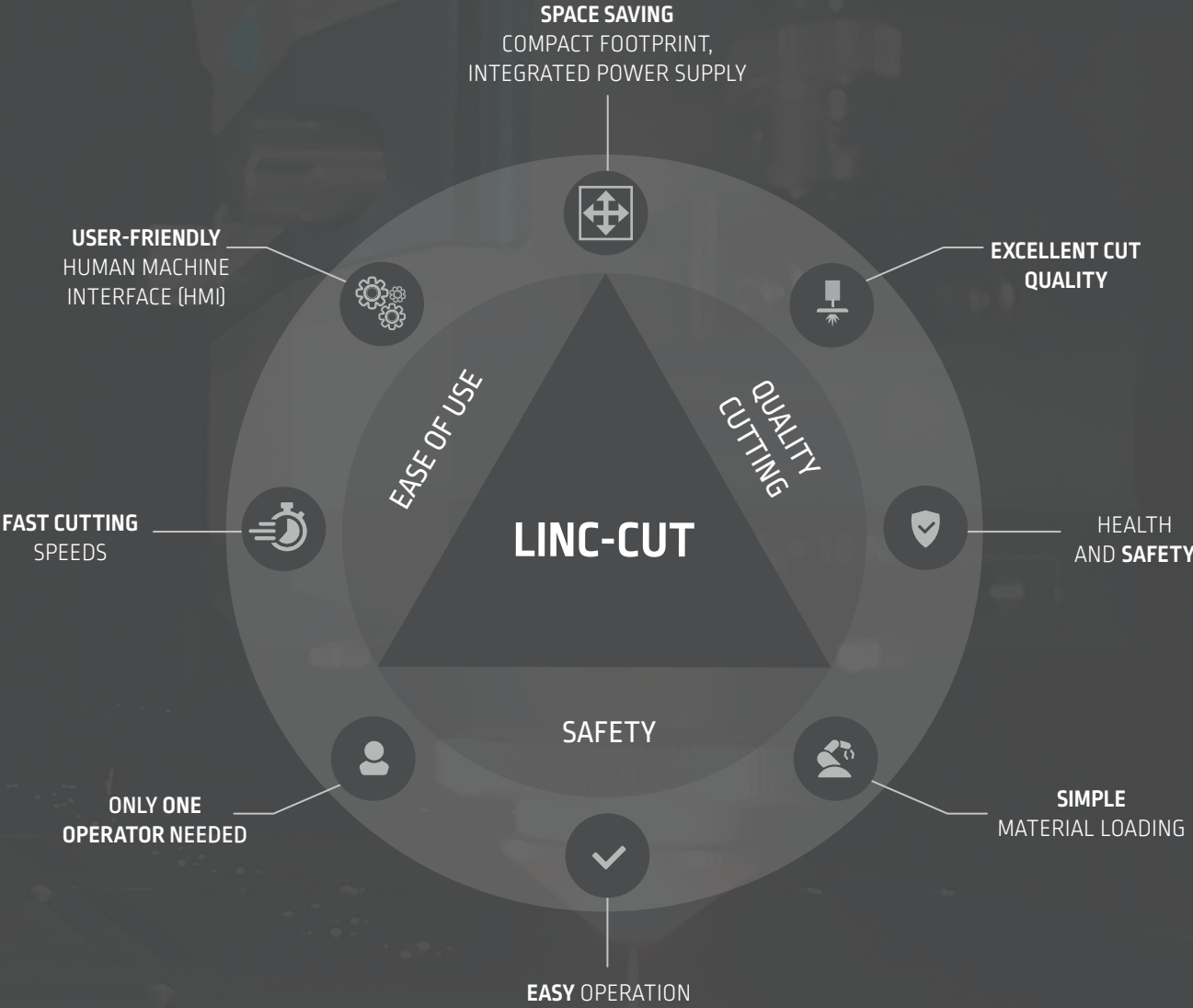


IMPROVE SAFETY STANDARDS

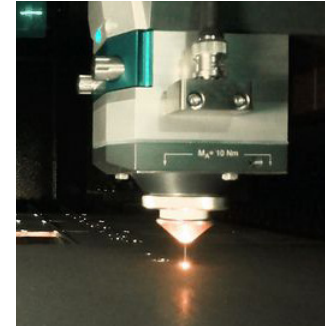


|  | LINC-CUT™ 3015        | LINC-CUT™ 1530s           |
|--|-----------------------|---------------------------|
|  <b>System Type</b>                           | Rollout-Drawer Table  | Double Shuttle Table      |
|  <b>Power</b>                                 | 4kW                   | 6 or 12kW                 |
|  <b>Cut Area</b>                              | 5' x 10'              | 5' x 10'                  |
|  <b>Production Cut Thickness (mild steel)</b> | Up to 5/8 inch (16mm) | Up to 1 1/2 inches (38mm) |

# LINC-CUT VALUES

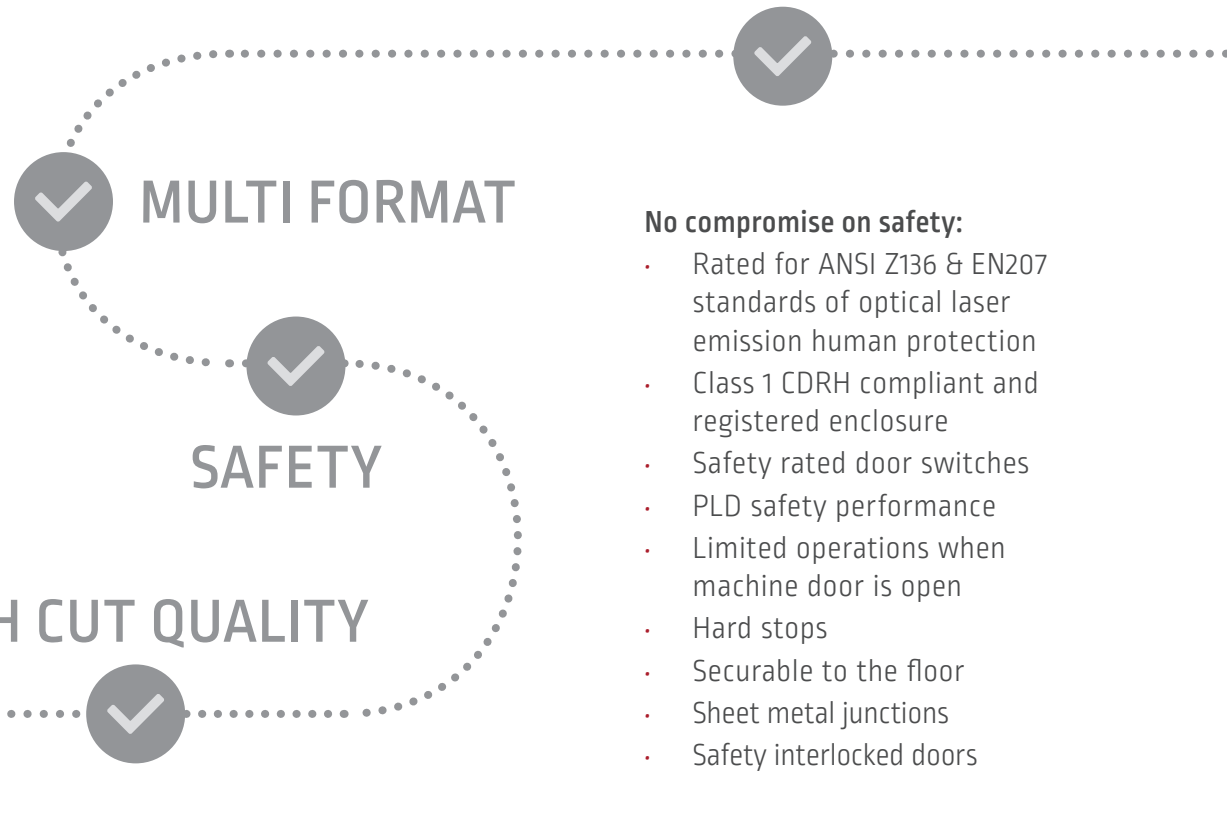


# TURN KEY SOLUTION



- Protective Enclosure
- Safety Windows for better monitoring
- Security Laser Head Access Door
- Centralized Control Panel
- Integrated CAD/CAM Software
- Manual Drawer Table or Automatic Shuttle Tables with light barrier protection
- Fume extraction with PRISM™
- 2-year warranty\*

## MANUAL OR AUTOMATIC



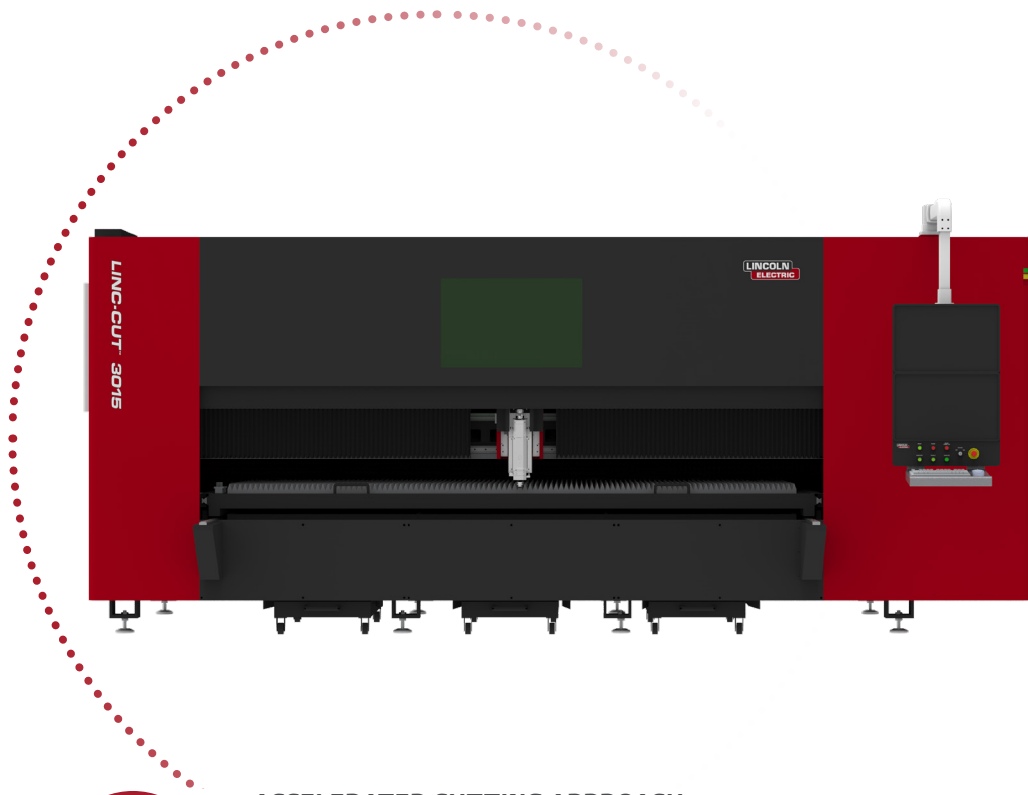
### No compromise on safety:

- Rated for ANSI Z136 & EN207 standards of optical laser emission human protection
- Class 1 CDRH compliant and registered enclosure
- Safety rated door switches
- PLD safety performance
- Limited operations when machine door is open
- Hard stops
- Securable to the floor
- Sheet metal junctions
- Safety interlocked doors

\* Refer to the conditions of application of the automatic warranty charter on your Lincoln Electric site

# LINC-CUT 3015

## COMPACT LASER CUTTING MACHINE WITH ROLLOUT-DRAWER



### ACCELERATED CUTTING APPROACH

The heavy-duty machine frame and reinforced fabricated steel gantry allows for high acceleration and deceleration rates to complement the Fiber Laser cutting process at higher speeds.

### FEATURES & BENEFITS:

- Compact machine with quick installation
- Easy-to-use HMI
- Full access to the table with a locking system
- Sheet loading is compatible with an overhead crane or forklift
- Easy access to the cutting head thanks to its sliding doors
- Doors closing controlled by a dual-channel sensor
- Internal camera system



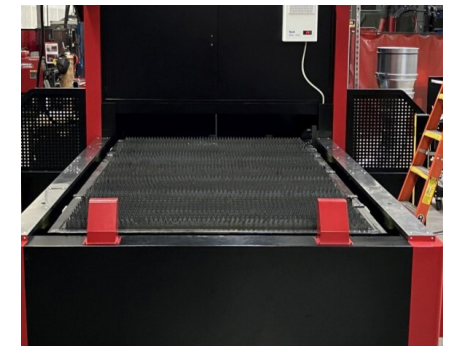
### DESIGNED FOR DURABILITY

Heavy-duty 35mm linear rails and helical gear rack are force lubricated in order to provide a long service life.

# LINC-CUT 1530S

LASER CUTTING MACHINE WITH SHUTTLE BED UP TO 12KW

- **FEATURES & BENEFITS:**
  - Machine with double shuttle bed with automatic change
  - Pneumatic table lock
  - Loading area secured by a light barrier
  - Table movements in the cutting enclosure through a rigid secured door
  - Double motorization allows heavy sheets to be moved (for 6 and 12kW)
  - Large access door for rapid intervention in the protection cabin



## OPERATOR -CENTRIC FEATURES

Safe operation of shuttle beds with remote control, laser light curtains, and camera visibility and safety interlocked doors



## BUILT TO LAST

All motion components are contained under bellows to protect them from the dust and debris of the cutting process.

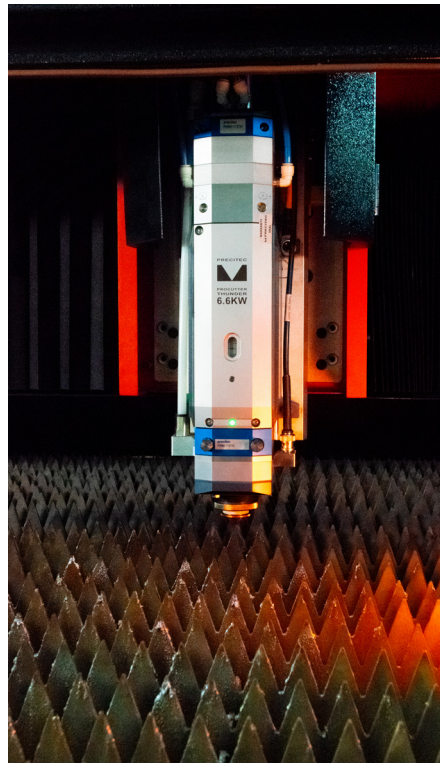
# HIGH QUALITY LASER PROCESS

## GET THE BEST PERFORMANCE WITH A READY TO CUT DATA BASE

A plug and play system with a built-in cutting data base for various material and thicknesses.

Controls your costs of operation with an excellent cut quality and cost of produced parts.

- Range 1 angularity range ISO9013
- Small contour and holes capability
- Designs simplified with mortise tenon
- Close to zero dross under parts
- Flexible adaptation for custom material and technical support



### Max Cutting Performances\*:

|      | A36 Mild Steel | Stainless steel | Aluminum |
|------|----------------|-----------------|----------|
| 4kW  | 5/8 inch       | 1/2 inch        | 1/2 inch |
| 6kW  | 1 inch         | 5/8 inch        | 5/8 inch |
| 12kW | 1 1/2 inches   | 1 inch          | 1 inch   |



### Optimal Fiber Laser Package:

- Autofocus laser head with automatic gas and cutting height calibration for optimum quality and repeatability
- Fiber core diameter of 100µm for optimal cut quality
- A gas console with automatic adjustment and selection
- Ethercat technology CNC interconnected with the laser source, laser head, height control, and axes, integrating all advanced control and monitoring functions, as well as a ready-to-use cutting parameter database; a single interface to control the entire machine

\* For intensive production, max thickness is reduced

# AIR FILTRATION SYSTEM

The optional Prism™ fume extraction system from Lincoln Electric uses intelligent fan control technology, maximizes fume extraction, conserves energy and extends equipment life.

## QUIET OPERATION

Silencer and sound deadening materials drastically reduce airflow noise. Equipped with a variable speed drive that adjusts extraction airflow to application.

## ADDED SAFETY

Integrated spark arrestor.

## REDUCED FOOTPRINT

Can be placed directly next to a cutting table, reduced footprint for areas with space constraints.

## SIMPLE MAINTENANCE

Automatic cleaning process once pre-set pressure differential is reached. Particulate is collected into the 113 liters dust bin.

## EASY INSTALLATION

Quick and seamless wire connectivity to the system. Connect power, compressed air, and duct sensor for fan speed control.



# INTELLIGENT SOFTWARE



## POWERFUL CONTROLS | ROBUST DESIGN

eCUT HMI and cncCUT software combine to give your operator full control of material handling, job processing, reporting & machine maintenance.

Organize jobs and optimize resources using a detailed operation display.



## DIRECT IMPORT OF FILES

Access DXF files. *Industry common DXF file importing*

# 1

### FEATURE RICH ABILITIES

Precise & fast. Software that enables operators to add holes & hole patterns, nest parts, fly cutting, add shapes and laser pierce and kerf optimization.

# 2

### CONTINUOUS EVOLUTIUON

Stay up-to-date with software upgrades that give you access to the latest technology and innovation.

# 3

### OPERATOR TRAINING

24/7 access to our on-line training platform - hours of training, large video library - unlimited tools and resources for your operators.

## LASER PIERCE & KERF OPTIMIZATION

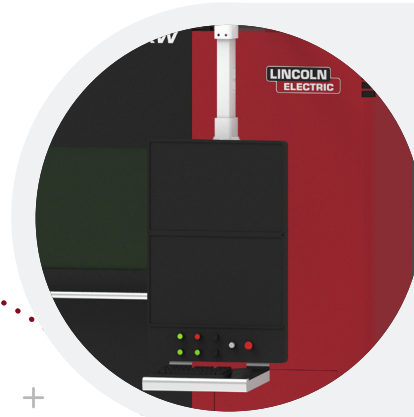
LEAD-INS

KERF COMPENSATION

TABBING OF SMALL PARTS

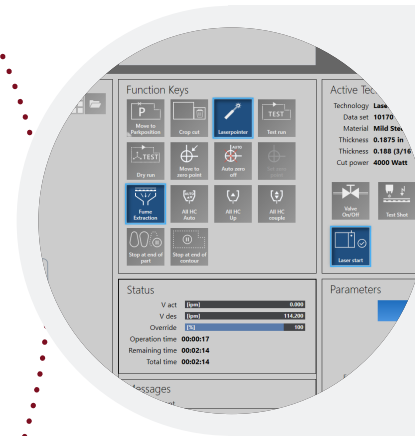


# eCUT DUAL SCREEN HMI



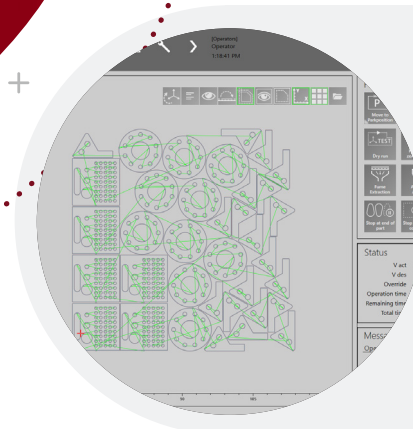
## INTEGRATED CAM PACKAGE

This motion controller allows the operator to design and nest parts on the fly at the machine, either replacing an external CAM solution or by providing additional value to the system.



## MACHINE CONTROL

Organize jobs and optimize resources using a detailed operation display.



## PART OPTIMIZATION

Material optimization through nesting means less scrap material, saving your business time & money.

# SERVICE & SUPPORT

## LINCOLN ELECTRIC SERVICES: A COMPLETE OFFER FOR YOUR PRODUCTION TOOLS



Far beyond the simple recommendation of processes or equipment, Lincoln Electric works with you in the service field by offering advice and expertise, demonstrations, feasibility studies, installation and commissioning of facilities, training and assistance to the start of production, maintenance, after-sales service and even upgrade of your equipment.



## CALL CENTERS

A large team of technicians can answer to every question and keep your manufacturing tools to their best performance levels.

## REMOTE SERVICE

Lincoln Electric offers innovative services with securely connected machines in order to increase performance of your tool:

### **On-line intervention**

allowing reduction of machines' down time.

### **On-line assistance and training**

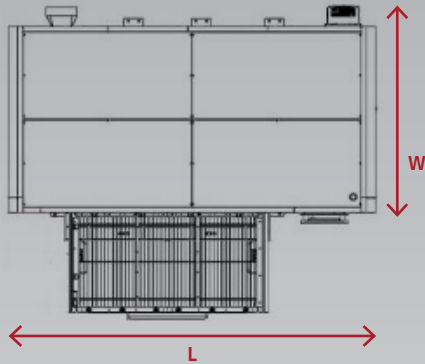
for optimization of your productivity.

## ADVICES AND EXPERTISES



On the basis of a personalized diagnosis, our technical specialists will analyse your needs, identify potential improvements, build solutions along with you, define action plans and give you the support you need.

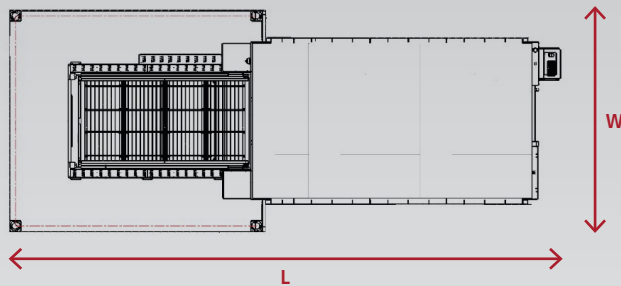
## DRAWER



## DRAWER

| Product Number   | Model                                      | Dimensions<br>L x W x H in (mm)                               | Shipping Weight<br>lb (kg) | Cut Area                      | Material Weight Capacity  |
|------------------|--|---|----------------------------|-------------------------------|---|
| LECS-004-3015-D2 | LASER CUTTING SYSTEM; 4kW; 3015; DRAWER;2D | 17' 4" L x 9'7" W x 77" H<br>(5288mm L x 2987mm W x 2320mm H) | 12,500 lbs (5,667 kg)      | 5' x 10'<br>(1524mm x 3048mm) | 1,322 lbs (26.44 lbs per Sq. Ft)<br>(599.65 kg) (129.09 kg per Sq. M) |

## SHUTTLE



## SHUTTLE

| Product Number   | Model   | Dimensions<br>L x W x H in (mm)                         | Shipping Weight<br>lb (kg) | Cut Area                      | Material Weight Capacity   |
|------------------|---|---|----------------------------|-------------------------------|--|
| LECS-006-1530-A2 | LASER CUTTING SYSTEM; 6kW; 1530s; SHUTTLE;2D  | 32' 10" x 12'2" x 7'6"<br>(9,999mm x 3,710mm x 2,279mm) | 24,200 lbs (10,977 kg)     | 5' x 10'<br>(1524mm x 3048mm) | 3,088 lbs (61.76 lbs per Sq. Ft)<br>(1,403 kg) (311.7kg per Sq.M) each bed |
| LECS-012-1530-A2 | LASER CUTTING SYSTEM; 12kW; 1530s; SHUTTLE;2D | 32' 10" x 12'2" x 7'6"<br>(9,999mm x 3,710mm x 2,279mm) | 24,200 lbs (10,977 kg)     | 5' x 10'<br>(1524mm x 3048mm) | 3,088 lbs (61.76 lbs per Sq. Ft)<br>(1,403 kg) (311.7kg per Sq.M) each bed |

### CUSTOMER ASSISTANCE POLICY

The business of Lincoln Electric is manufacturing and selling high quality welding equipment, consumables, and cutting equipment. Our challenge is to meet the needs of our customers and to exceed their expectations. On occasion, purchasers may ask Lincoln Electric for information or advice about their use of our products. Our employees respond to inquiries to the best of their ability based on information provided to them by the customers and the knowledge they may have concerning the application. Our employees, however, are not in a position to verify the information provided or to evaluate the engineering requirements for the particular weldment. Accordingly, Lincoln Electric does not warrant or guarantee or assume any liability with respect to such information or advice. Moreover, the provision of such information or advice does not create, expand, or alter any warranty on our products. Any express or implied warranty that might arise from the information or advice, including any implied warranty of merchantability or any warranty of fitness for any customers' particular purpose is specifically disclaimed.

Lincoln Electric is a responsive manufacturer, but the selection and use of specific products sold by Lincoln Electric is solely within the control of, and remains the sole responsibility of the customer. Many variables beyond the control of Lincoln Electric affect the results obtained in applying these types of fabrication methods and service requirements.

Subject to Change – This information is accurate to the best of our knowledge at the time of printing. Please refer to [www.lincolnelectriceurope.com](http://www.lincolnelectriceurope.com) for any updated information.



Publication LEA-011526HR1-01  
© Lincoln Global Inc. All Rights Reserved  
<https://www.lincolnelectric.com/automation>

