

CWT WDL-3™

WELD DATA LOGGER



Key Features

The WDL-3™ is a lightweight, portable data acquisition system that enables accurate measuring and documenting of all basic welding parameters.

- » Ideal for inspectors – Easy to transport and provide instantaneous data on current welding conditions.
- » No need for job site connectivity - Log up to 4,000 weld summaries to internal memory
- » Hard printouts - Print out a hard copy without a PC at the job site of all logged welds
- » Downloadable data - Digitally download all the logged welds for further analytics

Connectivity »

Ethernet
USB
Serial printer

FEATURES:

» Parameters monitored / logged

- Voltage
- Current
- Wire Feed Speed
- Temperature
- Travel Speed
- Shielding Gas Flow
- Arc Time
- Heat Input*

* Heat input is calculated based on optional travel speed sensor or default travel speed or weld length specified by user.

» Sample Rates

- Raw sample rate of 25 kHz
- Filtered sample rate of 1 kHz

AVAILABLE SENSOR OPTIONS



Gas Flow Monitor (GFM™) for WDL-3 (A0A0183)

- 5-255 scfh (2-120 LPM)
- $\pm 2\%$ of full scale ± 1 digit
- 1 scfh (1 LPM) resolution
- 50 psia (344 kpa) maximum operating pressure



High Frequency Kit (A0A0230)

- 0-80 volts DC $\pm 1\%$
- 0.1 volt resolution
- For use in high frequency applications



Travel Speed/Distance Sensor (A0A0182)

- 1-100 IPM (0.42 - 42mm/s) $\pm 3\%$
- 0.1 IPM (0.04mm/s) resolution



Wire Feed Speed Sensor (A0A0179)

- Up to 1/16" wire
- 10-1000 IPM (4.2-423mm/s) $\pm 3\%*$
- 1 IPM (0.4mm/s) resolution



Wire Feed Speed Sensor, Large Diameter (A0A0180)

- 1/16" to 3/32" wire
- 10-1000 IPM (4.2-423mm/s) $\pm 3\%*$
- 1 IPM (0.4mm/s) resolution



Thermocouple Temperature Sensors (K, J, T types)

- K-Type: A0A0184
- J-Type: A0A0185
- T-Type: A0A0186



Infrared Temperature Sensors (A0A0187)

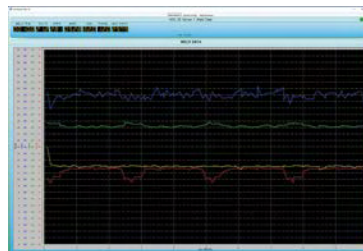
- 0-1000F (-18 - 538° C)



Remote I/O Cable (A3W0380)

- 6 meter long

DATA EXPORTING



ArcTrack II (A5Z0051)

- Graphing
- Excel Data Exporting
- Device Configuration



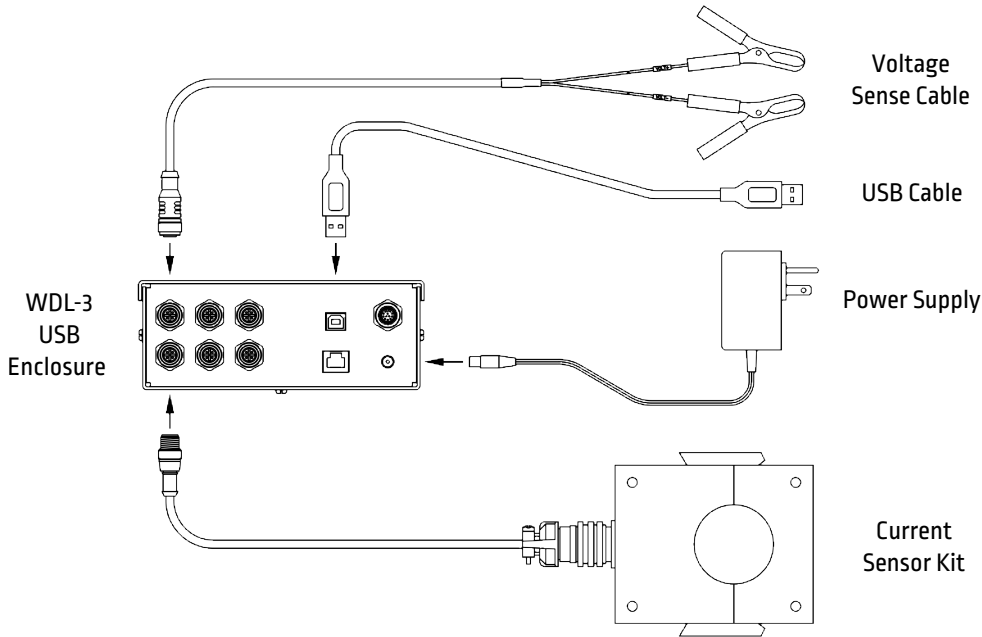
Serial Printer (A0A0188)

- Printer
- Cable
- Power Supply

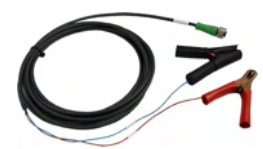
STANDARD CONFIGURATIONS

PRODUCT SPECIFICATIONS

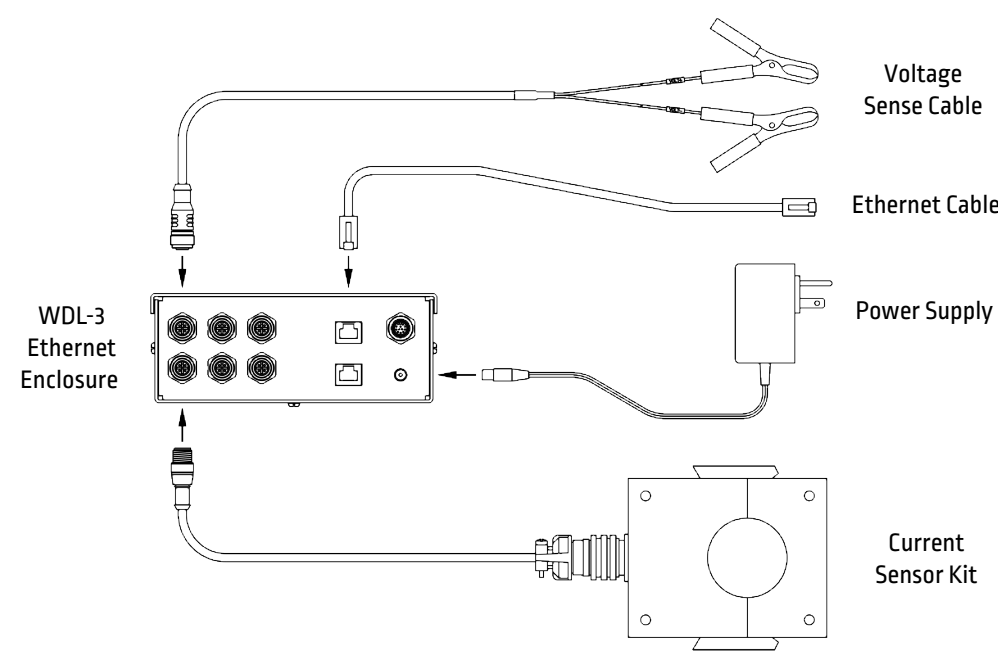
Product Name	Product Number	Input Power	H x W x D in (mm)	Net Weight lbs [kg]
WDL-3 - USB	A0A0171-USB	12 - 32vdc @ 0.5 amps (nominal 24 VDC input)	7.50 W x 4.50 D x 2.50 H (51 x 165 x 280)	4 (1.8)
WDL-3 - Ethernet	A0A0171-ETH	12 - 32vdc @ 0.5 amps (nominal 24 VDC input)	7.50 W x 4.50 D x 2.50 H (51 x 165 x 280)	4 (1.8)



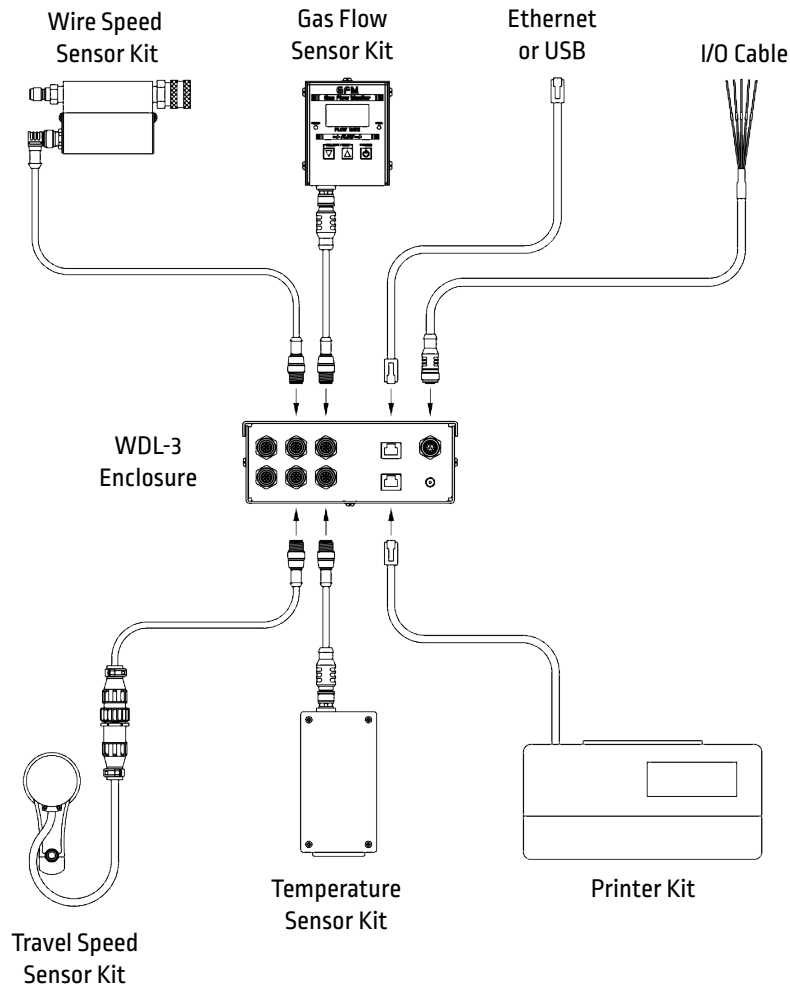
- 0-1000 amps DC \pm 1%*
- 1 amp resolution



- 0-80 volts DC \pm 1%
- 0.1 volt resolution
- NOT for use in high frequency applications



OPTIONAL CONFIGURATIONS



The operation of welding fume control equipment is affected by various factors including proper use and positioning of the equipment, maintenance of the equipment and the specific welding procedure and application involved. Worker exposure level should be checked upon installation and periodically thereafter to be certain it is within applicable OSHA PEL and ACGIH TLV limits.

CUSTOMER ASSISTANCE POLICY

The business of The Lincoln Electric Company® is manufacturing and selling high quality welding equipment, consumables, and cutting equipment. Our challenge is to meet the needs of our customers and to exceed their expectations. On occasion, purchasers may ask Lincoln Electric for information or advice about their use of our products. Our employees respond to inquiries to the best of their ability based on information provided to them by the customers and the knowledge they may have concerning the application. Our employees, however, are not in a position to verify the information provided or to evaluate the engineering requirements for the particular weldment. Accordingly, Lincoln Electric does not warrant or guarantee or assume any liability with respect to such information or advice. Moreover, the provision of such information or advice does not create, expand, or alter any warranty on our products. Any express or implied warranty that might arise from the information or advice, including any implied warranty of merchantability or any warranty of fitness for any customers' particular purpose is specifically disclaimed.

Lincoln Electric is a responsive manufacturer, but the selection and use of specific products sold by Lincoln Electric is solely within the control of, and remains the sole responsibility of the customer. Many variables beyond the control of Lincoln Electric affect the results obtained in applying these types of fabrication methods and service requirements.

Subject to Change – This information is accurate to the best of our knowledge at the time of printing. Please refer to www.lincolnelectric.com for any updated information.