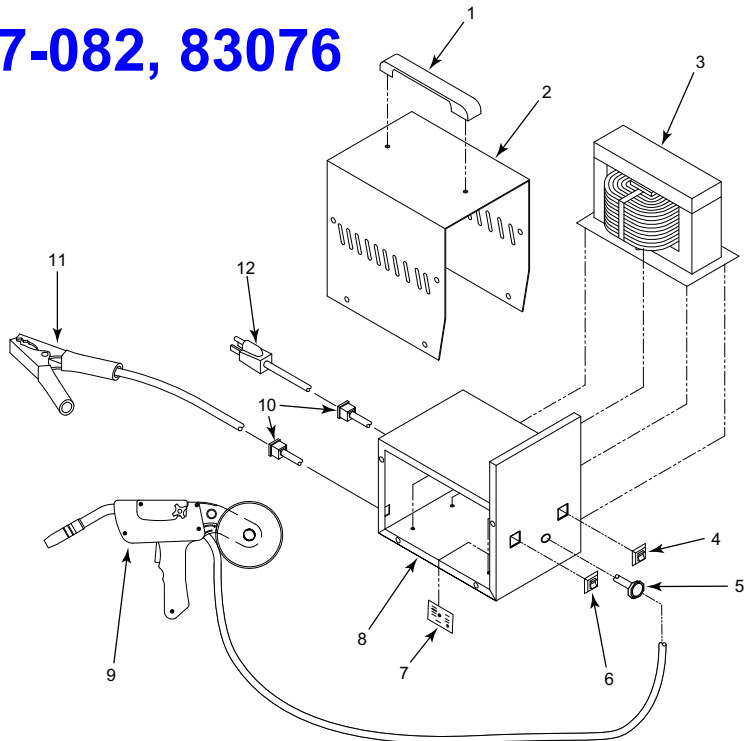


REPLACEMENT PARTS LISTS

117-082, 83076

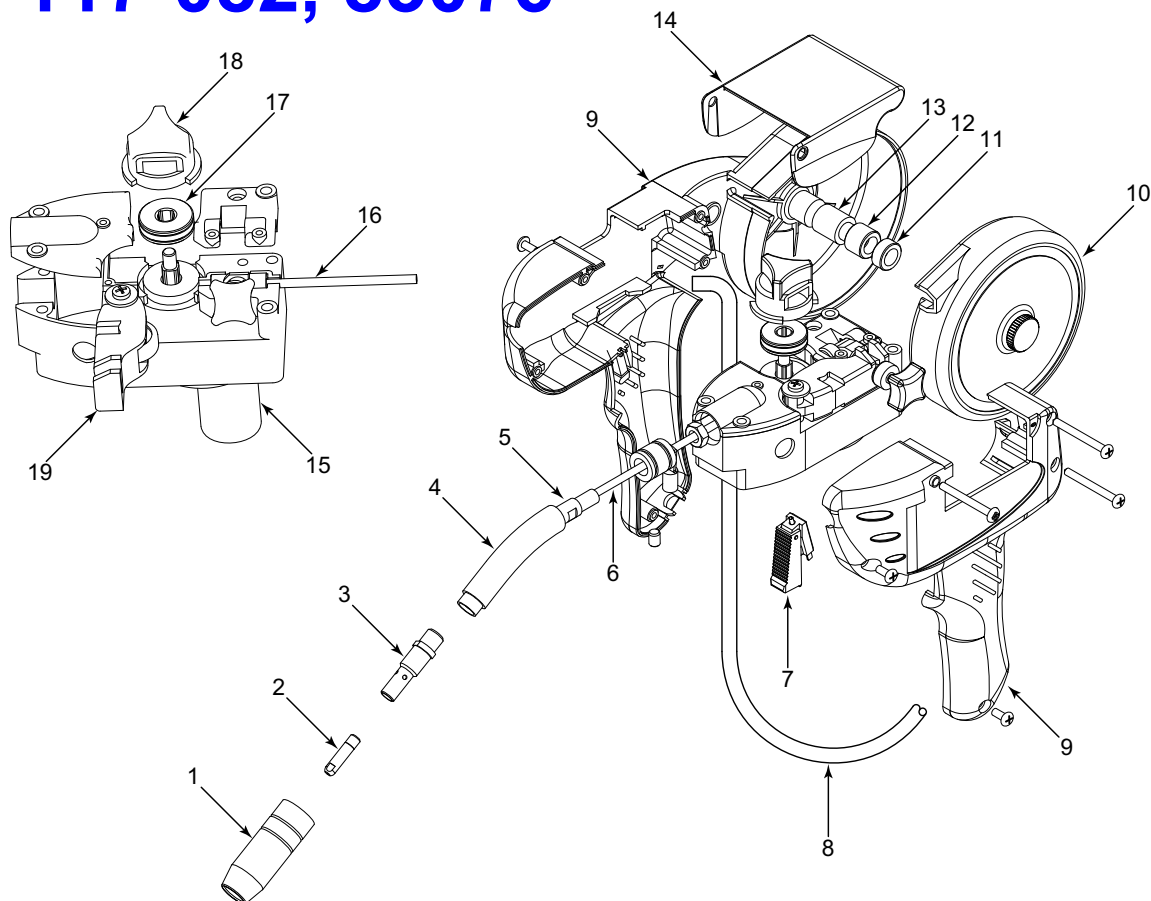


Use the information in this parts list to order replacement parts.
All service work should be performed by qualified service personnel.

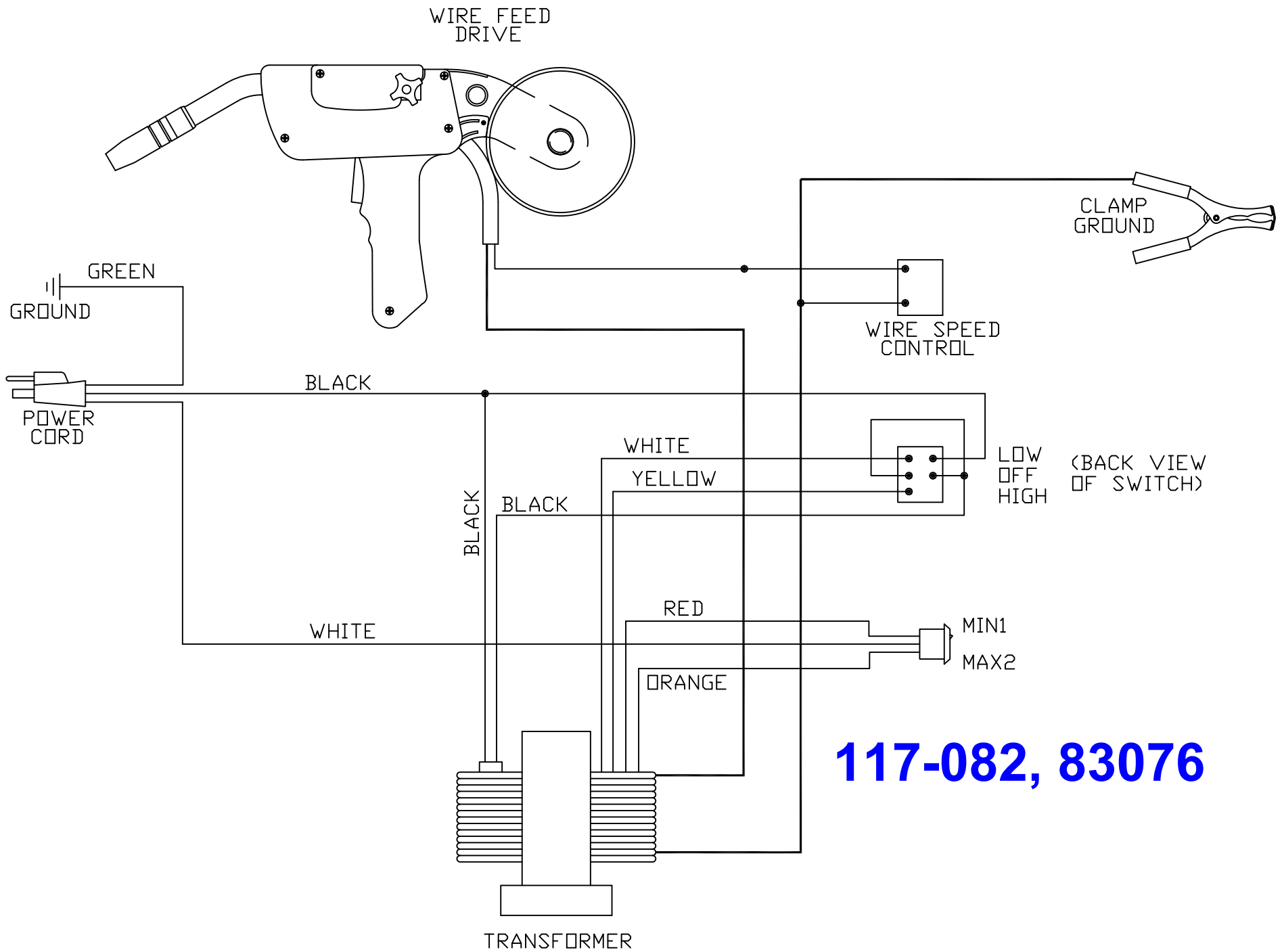
ITEM	DESCRIPTION	PART NO.
1	Handle	312-264-000
2	Cover	410-852-XXX
3	Transformer Assembly	880-392-888
	Thermal Protector Only	880-397-000
4	Power Switch	246-405-000
5	Strain Relief Bushing	541-056-000
6	Range Switch	246-404-000
7	Circuit Board (speed control)	880-440-006
8	Base	410-959-XXX
9	Spool Gun Assembly	238-580-000
10	Strain Relief	541-243-000
11	Ground Clamp	239-010-102
	Ground Clamp Cable	238-223-000
12	Power Cord	248-321-000
§	Welding Face Shield	332-239-666
§	Not Shown	X XX Order by Brand

117-082, 83076

ENGLISH



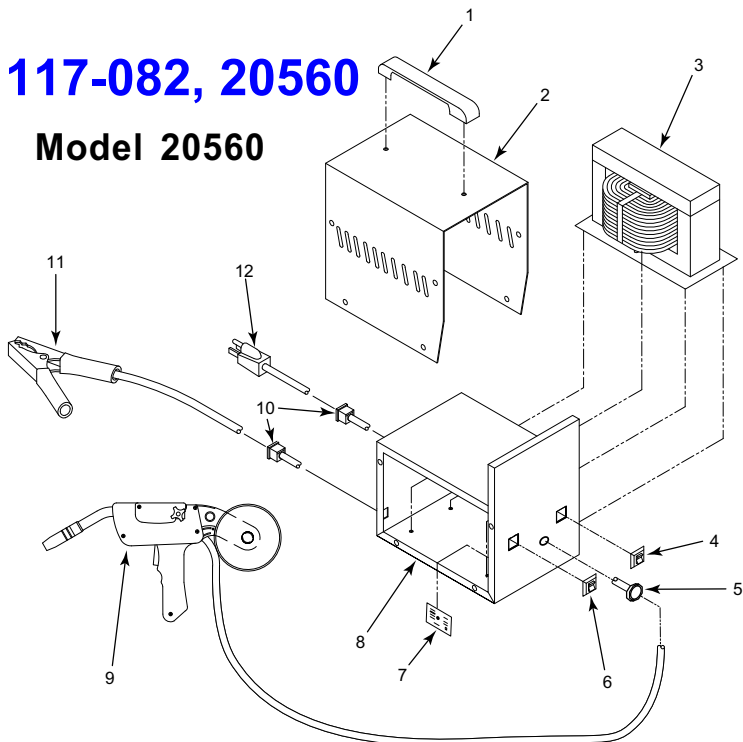
ITEM	DESCRIPTION	PART NO.
1	Gas Nozzle	334-203-000
2	Contact Tip .030"	KP11-30
3	Gas Diffuser	334-363-000
4	Insulator	334-565-666
5	Spool Gun Neck	334-566-666
6	Spool Gun Liner	S26399-28
7	Switch	S27119
8	Cable Assembly	334-576-666
9	Handle	334-570-666
10	Wire Spool Cover	334-575-666
11	Nut	334-574-666
12	Friction Spacer	334-573-666
13	Rubber Sleeve	334-572-666
14	Drive Cover	334-571-666
15	Drive Motor	334-569-666
16	Guide Tube	334-577-666
17	Drive Roller	334-567-666
18	Drive Roller Cover	334-568-666
19	Tension Arm	334-578-666



117-082, 83076

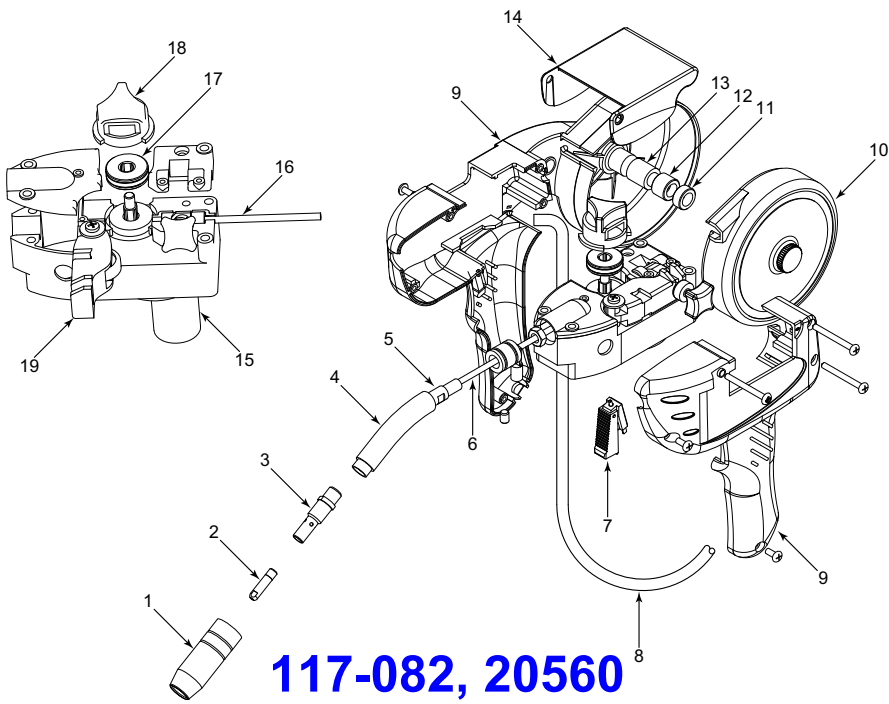
117-082, 20560

Model 20560



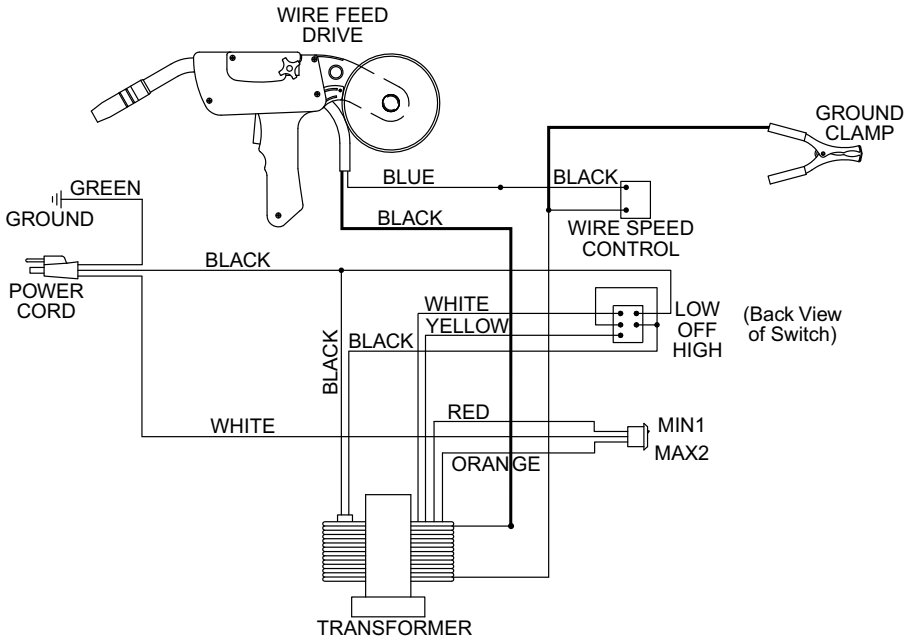
Use the information in this parts list to order replacement parts.
All service work should be performed by qualified service personnel.

ITEM	DESCRIPTION	PART NO.
1	Handle	312-264-000
2	Cover	410-852-020
3	Transformer Assembly	880-392-888
	Thermal Protector Only	880-397-000
4	Power Switch	246-405-000
5	Strain Relief Bushing	541-056-000
6	Range Switch	246-404-000
7	Circuit Board (speed control)	880-440-006
8	Base	410-959-010
9	Spool Gun Assembly	238-580-000
10	Strain Relief	541-243-000
11	Ground Clamp	239-010-102
	Ground Clamp Cable	238-223-000
12	Power Cord	248-321-000
§	Welding Face Shield	332-239-666
§	Not Shown	

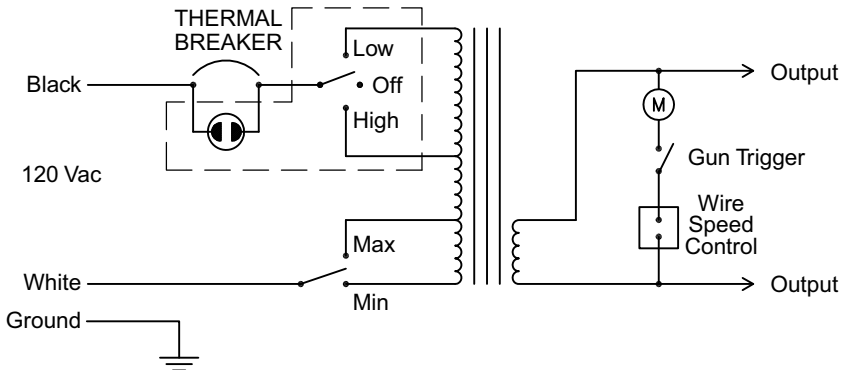


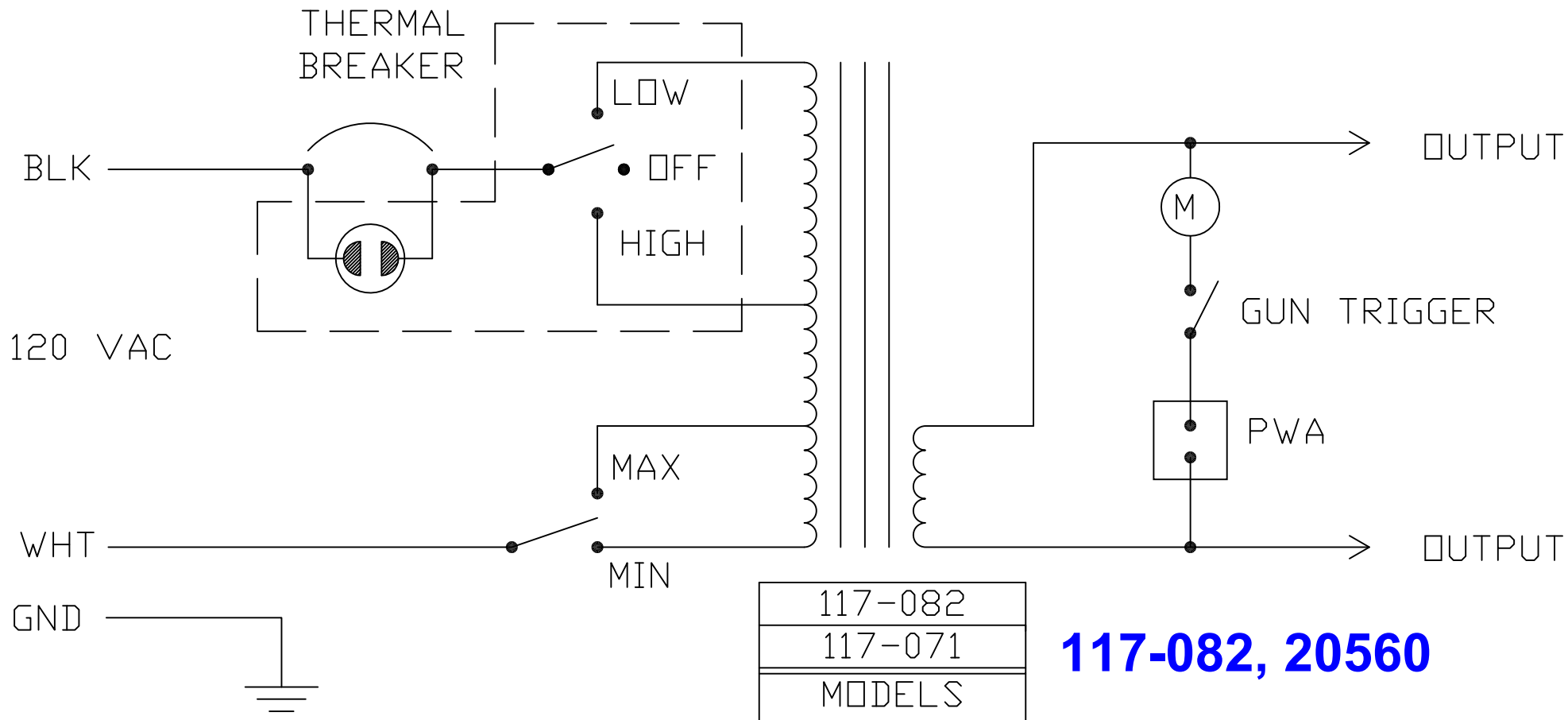
117-082, 20560

ITEM	DESCRIPTION	PART NO.
1	Gas Nozzle	43480
2	Contact Tip .030"	43100
3	Gas Diffuser	334-363-000 (334-494-666)
4	Insulator	334-565-666
5	Spool Gun Neck	334-566-666
6	Spool Gun Liner	059-217-040
7	Switch	BX0020
8	Cable Assembly	334-576-666
9	Handle	334-570-666
10	Wire Spool Cover	334-575-666
11	Nut	334-574-666
12	Friction Spacer	334-573-666
13	Rubber Sleeve	334-572-666
14	Drive Cover	334-571-666
15	Drive Motor	334-569-666
16	Guide Tube	059-217-040
17	Drive Roller	334-567-666
18	Drive Roller Cover	334-568-666
19	Tension Arm	334-578-666



117-082, 20560





117-082, 20560