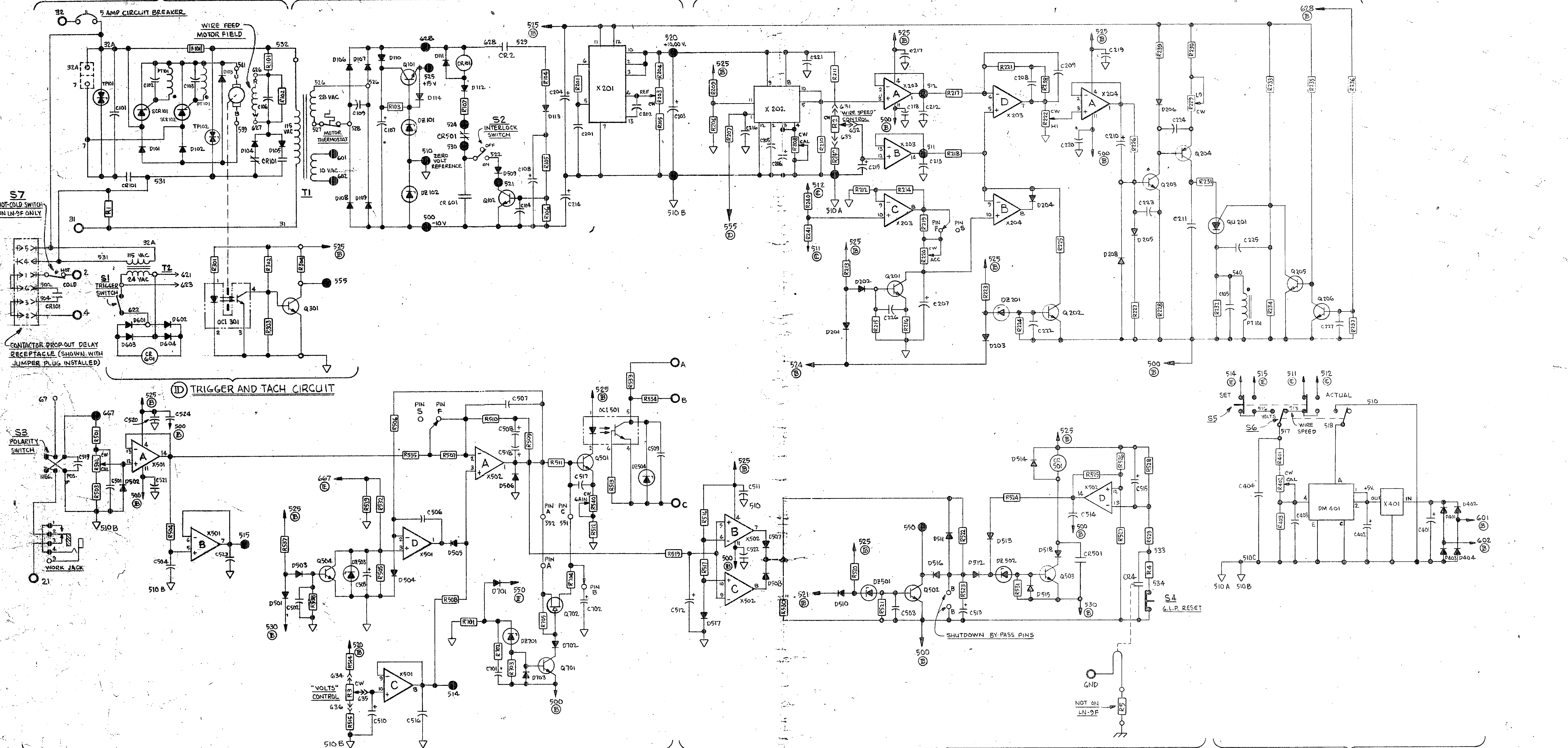


8L71-9 (A) INPUT AND MOTOR POWER CIRCUIT

(B) CONTROL POWER SUPPLY AND RELAY CIRCUIT

(C) MOTOR CONTROL CIRCUIT



POWER CIRCUIT

C101	.005 MFD	R101	40 Ω 12 W.
C102	.047 MFD	R102	100 K Ω
C103	.047 MFD	R103	330 Ω
C104	.022 MFD	R104	1 K Ω
C105	.01 MFD	R105	10 K Ω
C106	50 MFD	R106	100 K Ω
C107	150 MFD	R107	10 Ω
C108	2.7 MFD		
C109	.15 MFD		
CR101	3PDT 24 V.A.C.		
D101	16 A.	SCR101	12 A. 400 V.
D102	16 A.	SCR102	12 A. 400 V.
D103	16 A.		
D104	1A. 1000 V.	Q101	2N 5655
D105	1A. 1000 V.	Q102	2N 5655
D106	THRU D114		
D2101	15 V. 5W.		
D2102	10 V. 5W.		
F101	1/2 A. SLOW BLOW FUSE		

* C105 AND PT101 PRIMARY ARE SHOWN IN SECTION C.

CONTROL CIRCUIT

C201	.022 MFD	R201	1 K Ω
C202	.022 MFD		
C203	18 MFD	R203	500 Ω TRIMMER
C204	.39 MFD	R204	100 K Ω 1/4 W. 1%
C205	.0033 MFD	R205	2.94 K Ω 1/4 W. 1%
C206	.47 MFD	R206	15 K Ω
C207	.18 MFD	R207	10 K Ω
C208	4 MFD	R208	100 K Ω TRIMMER
C209	.047 MFD	R209	33 K Ω
C210	4.7 MFD	R210	10 K Ω
C211	.15 MFD	R211	5.6 K Ω
C212	.022 MFD	R212	15 K Ω
C213	.022 MFD	R213	47 K Ω
C214	4.7 MFD	R214	15 K Ω
C215	.18 MFD	R215	100 K Ω
C216	100 pF.	R216	1 K Ω
C217		R217	1 K Ω
C218	.022 MFD	R218	1 K Ω
C219		R219	1 K Ω
C220		R220	50 K Ω TRIMMER
C221		R221	15 K Ω
C222		R222	10 K Ω TRIMMER
C223		R223	33 K Ω
C224		R224	100 K Ω
C225		R225	1 K Ω

TACH CIRCUIT

R301	1 K Ω
R302	68 K Ω
R303	33 K Ω
R304	1.3 K Ω
Q301	2N 4123
Q302	2N 4123
Q303	2N 4123
Q304	2N 4123
Q305	2N 4123
Q306	2N 4123
Q307	2N 6027
Q308	2N 4123

METER CIRCUIT

C401	500 MFD
C402	4.7 MFD
C403	.022 MFD
C404	.022 MFD
D401	THRU D404
D405	THRU D408
D409	24.3 K Ω 1/4 W. 1%
D410	2 K Ω TRIMMER
D411	2.800 Ω 1/4 W. 1%
X401	VOLTAGE REGULATOR

VOLTAGE CIRCUIT

C501	.1 MFD
C502	.022 MFD
C503	.022 MFD
C504	4.0 MFD
C505	.47 MFD
C506	.022 MFD
C507	.022 MFD
C508	.39 MFD
C509	.012 MFD
C510	1.8 MFD
C511	.022 MFD
C512	4.7 MFD
C513	.022 MFD
C514	.022 MFD
C515	.022 MFD
C516	.022 MFD
C517	.022 MFD
C518	.39 MFD
C519	.005 MFD
C520	
C521	.022 MFD
C522	4.7 MFD

SHUTDOWN CIRCUIT

D501	4.8 V.
D502	15 V. 1W.
D503	10 V.
D504	20 V. 1W.
D505	4.8 V.
D506	10 K Ω
D507	10 K Ω
D508	2.2 K Ω
D509	2.7 M Ω
D510	20 V. 1W.
D511	4.8 V.
D512	15 V. 1W.
D513	10 V.
D514	20 V. 1W.
D515	4.8 V.
D516	10 K Ω
D517	10 K Ω
D518	2.2 K Ω
D519	2.7 M Ω
D520	20 V. 1W.
D521	4.8 V.
D522	10 K Ω
D523	10 K Ω
D524	2.2 K Ω
D525	2.7 M Ω
D526	20 V. 1W.
D527	4.8 V.
D528	10 K Ω
D529	10 K Ω
D530	2.2 K Ω
D531	2.7 M Ω
D532	20 V. 1W.
D533	4.8 V.
D534	10 K Ω
D535	10 K Ω
D536	2.2 K Ω
D537	2.7 M Ω
D538	20 V. 1W.
D539	4.8 V.
D540	10 K Ω
D541	10 K Ω
D542	2.2 K Ω
D543	2.7 M Ω
D544	20 V. 1W.
D545	4.8 V.
D546	10 K Ω
D547	10 K Ω
D548	2.2 K Ω
D549	2.7 M Ω
D550	20 V. 1W.
D551	4.8 V.
D552	10 K Ω
D553	10 K Ω
D554	2.2 K Ω
D555	2.7 M Ω
D556	20 V. 1W.
D557	4.8 V.
D558	10 K Ω
D559	10 K Ω
D560	2.2 K Ω
D561	2.7 M Ω
D562	20 V. 1W.
D563	4.8 V.
D564	10 K Ω
D565	10 K Ω
D566	2.2 K Ω
D567	2.7 M Ω
D568	20 V. 1W.
D569	4.8 V.
D570	10 K Ω
D571	10 K Ω
D572	2.2 K Ω
D573	2.7 M Ω
D574	20 V. 1W.
D575	4.8 V.
D576	10 K Ω
D577	10 K Ω
D578	2.2 K Ω
D579	2.7 M Ω
D580	20 V. 1W.
D581	4.8 V.
D582	10 K Ω
D583	10 K Ω
D584	2.2 K Ω
D585	2.7 M Ω
D586	20 V. 1W.
D587	4.8 V.
D588	10 K Ω
D589	10 K Ω
D590	2.2 K Ω
D591	2.7 M Ω
D592	20 V. 1W.
D593	4.8 V.
D594	10 K Ω
D595	10 K Ω
D596	2.2 K Ω
D597	2.7 M Ω
D598	20 V. 1W.
D599	4.8 V.
D600	10 K Ω
D601	10 K Ω
D602	2.2 K Ω
D603	2.7 M Ω
D604	20 V. 1W.
D605	4.8 V.
D606	10 K Ω
D607	10 K Ω
D608	2.2 K Ω
D609	2.7 M Ω
D610	20 V. 1W.
D611	4.8 V.
D612	10 K Ω
D613	10 K Ω
D614	2.2 K Ω
D615	2.7 M Ω
D616	20 V. 1W.
D617	4.8 V.
D618	10 K Ω
D619	10 K Ω
D620	2.2 K Ω
D621	2.7 M Ω
D622	20 V. 1W.
D623	4.8 V.
D624	10 K Ω
D625	10 K Ω
D626	2.2 K Ω
D627	2.7 M Ω
D628	20 V. 1W.
D629	4.8 V.
D630	10 K Ω
D631	10 K Ω
D632	2.2 K Ω
D633	2.7 M Ω
D634	20 V. 1W.
D635	4.8 V.
D636	10 K Ω
D637	10 K Ω
D638	2.2 K Ω
D639	2.7 M Ω
D640	20 V. 1W.
D641	4.8 V.
D642	10 K Ω
D643	10 K Ω
D644	2.2 K Ω
D645	2.7 M Ω
D646	20 V. 1W.
D647	4.8 V.
D648	10 K Ω
D649	10 K Ω
D650	2.2 K Ω
D651	2.7 M Ω
D652	20 V. 1W.
D653	4.8 V.
D654	10 K Ω
D655	10 K Ω
D656	2.2 K Ω
D657	2.7 M Ω
D658	20 V. 1W.
D659	4.8 V.
D660	10 K Ω
D661	10 K Ω
D662	2.2 K Ω
D663	2.7 M Ω
D664	20 V. 1W.
D665	4.8 V.
D666	10 K Ω
D667	10 K Ω
D668	2.2 K Ω
D669	2.7 M Ω
D670	20 V. 1W.
D671	4.8 V.
D672	10 K Ω
D673	10 K Ω
D674	2.2 K Ω
D675	2.7 M Ω
D676	20 V. 1W.
D677	4.8 V.
D678	10 K Ω
D679	10 K Ω
D680	2.2 K Ω
D681	2.7 M Ω
D682	20 V. 1W.
D683	4.8 V.
D684	10 K Ω
D685	10 K Ω
D686	2.2 K Ω
D687	2.7 M Ω
D688	20 V. 1W.
D689	4.8 V.
D690	10 K Ω
D691	10 K Ω
D692	2.2 K Ω
D693	2.7 M Ω
D694	20 V. 1W.
D695	4.8 V.
D696	10 K Ω
D697	10 K Ω
D698	2.2 K Ω
D699	2.7 M Ω
D700	20 V. 1W.

TRIGGER CIRCUIT

CR601	SPDT 24V.D.C.
D601	THRU D604
D605	THRU D608
D609	THRU D612
D613	THRU D616
D617	THRU D620
D621	THRU D624
D625	THRU D628
D629	THRU D632
D633	THRU D636
D637	THRU D640
D641	THRU D644
D645	THRU D648
D649	THRU D652
D653	THRU D656
D657	THRU D660
D661	THRU D664
D665	THRU D668
D671	THRU D674
D675	THRU D678
D681	THRU D684
D685	THRU D688
D691	THRU D694
D695	THRU D698
D701	THRU D704
D705	THRU D708
D711	THRU D714
D715	THRU D718
D721	THRU D724
D725	THRU D728
D731	THRU D734
D735	THRU D738
D741	THRU D744
D745	THRU D748
D751	THRU D754
D755	THRU D758
D761	THRU D764
D765	THRU D768
D771	THRU D774
D775	THRU D778
D781	THRU D784
D785	THRU D788
D791	THRU D794
D795	THRU D798
D801	THRU D804
D805	THRU D808
D811	THRU D814
D815	THRU D818
D821	THRU D824
D825	THRU D828
D831	THRU D834
D835	THRU D838
D841	THRU D844
D845	THRU D848
D851	THRU D854
D855	THRU D858
D861	THRU D864
D865	THRU D868
D871	THRU D874
D875	THRU D878
D881	THRU D884
D885	THRU D888
D891	THRU D894
D895	THRU D898
D901	THRU D904
D905	THRU D908
D911	THRU D914
D915	THRU D918
D921	THRU D924
D925	THRU D928
D931	THRU D934
D935	THRU D938
D941	THRU D944
D945	THRU D948
D951	THRU D954
D955	THRU D958
D961	THRU D964
D965	THRU D968
D971	THRU D974
D975	THRU D978
D981	THRU D984
D985	THRU D988
D991	THRU D994
D995	THRU D998

METER CIRCUIT

DM401	DIGITAL METER
X401	VOLTAGE REGULATOR

KEY TO SYMBOLS

- INPUT LINE CONNECTION
- POWER OR SIGNAL SOURCE POINT
- REMOVABLE CONNECTION
- ▽ COMMON CONNECTION
- ⓐ THROUGH SOURCE POINT CIRCUIT LOCATION

LEAD COLOR CODING

- B - BLACK
- R - RED
- W - WHITE

ANSI ELECTRICAL SYMBOLS PER E-1537