

Service Notice Number: 20210225-4

Date: 2/25/2020

Power Wave 300C Rework by-pass capacitor assembly

Product(s) Covered:

Machine	Code #	Serial Range
Power Wave 300C ADVANCED	12943	U1200903890-U1201206964
POWER WAVE 300C STANDARD	12942	U1200903897-U1201101149

Symptoms:

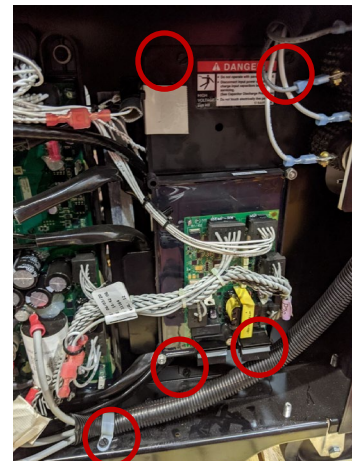
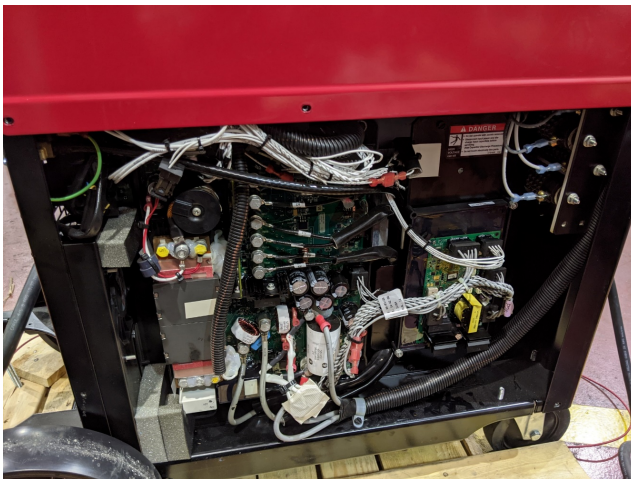
Power Wave 300C may reset or display error 99.

Recommended Action:

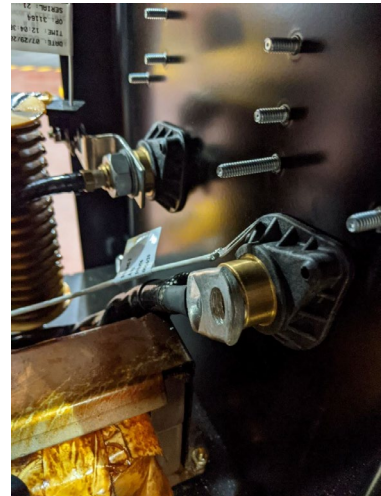
For products that fall within the serial number ranges above ("Covered Products"), submit a warranty claim and order the replacement parts recommended in the repair procedure.

Power Wave 300C Advanced 12943 Repair Procedure:

- On a warranty claim, order the replacement parts 9SS18858-26 Snubber Assembly, 9SCF000010 #10-24HN-4265, and 9SE106A-1 LOCKWASHER. The approved repair time for this repair is 1 hour.
- Remove left case side, then remove PFC board panel and loosen input cable clamp.



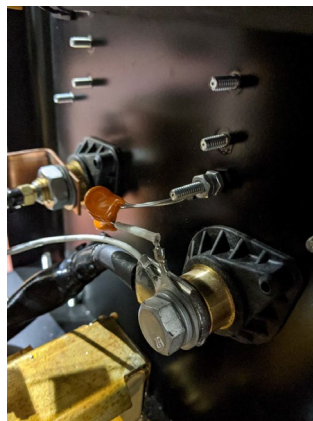
- Disconnect output cable and snubber lead.



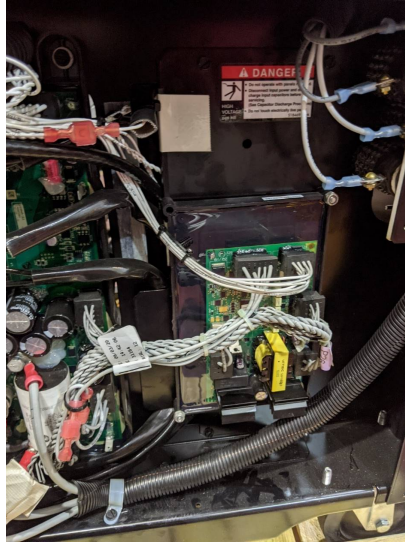
- Add one snubber cap assembly (9SS18858-26) to the output stud, between the lock washer and snubber lead terminal.



- Add a nut (9SCF000010) to the PEM stud, then attach the snubber caps, then add a lock washer (9SE106A-1) and a second nut (9SCF000010).



- Reattach PFC panel and input cable clamp.
- Perform a resistance check across the output studs. The resistance should be at least 500 ohms. Then perform an output test at 300 amps.



Power Wave 300C Standard 12942 Repair Procedure:

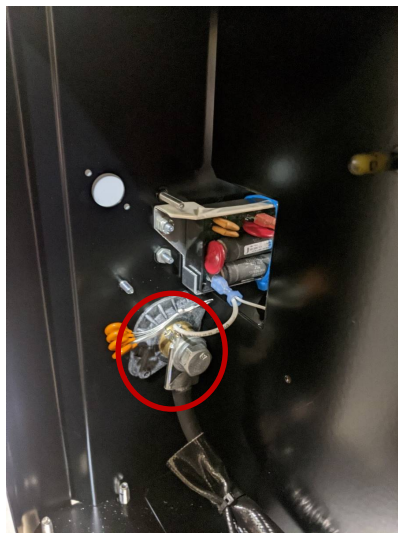
- On a warranty claim, order the replacement parts 9SS18858-26 Snubber Assemblies (Qty 2), 9SCF000010 #10-24HN-4265, and 9SE106A-1 LOCKWASHER. The approved repair time for this repair is 1 hour.
- Remove both case sides. On the left side of the machine, disconnect the output cable.



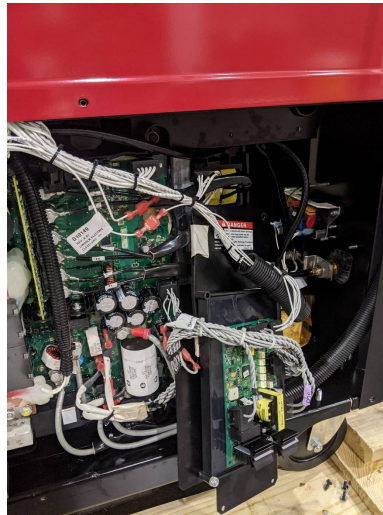
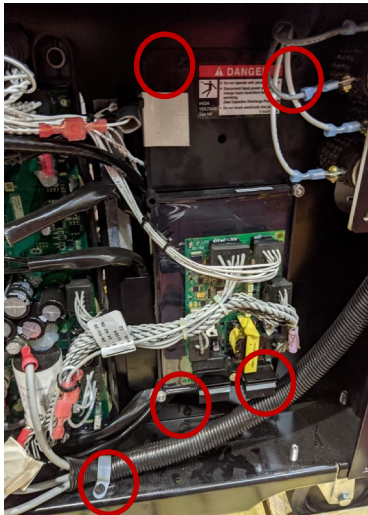
- Add 9SS18858-26 snubber cap assembly to output stud.



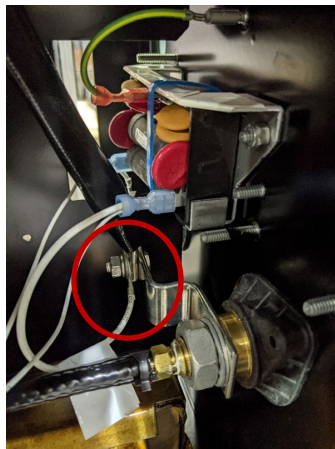
- Add a nut (9SCF000010) to the PEM stud, then attach the snubber cap, then add a lock washer (9SE106A-1) and a second nut (9SCF000010).



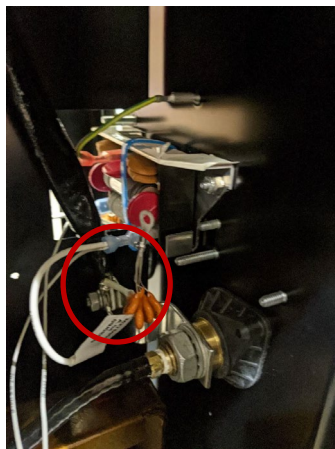
- On the right side, remove the PFC board panel.



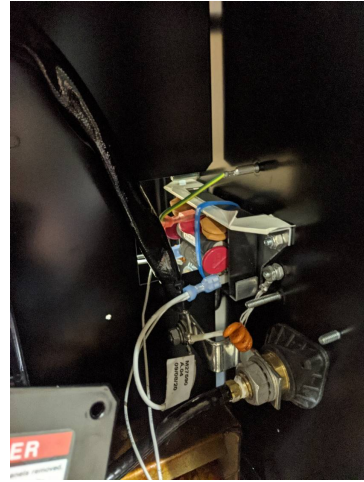
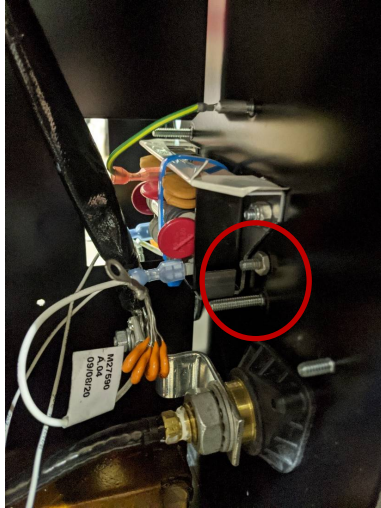
- Disconnect the output lead.



- Add 9SS18858-26 snubber cap assembly to bus bar.



- Add a nut (9SCF000010) to the PEM stud, then attach the snubber cap, then add a lock washer (9SE106A-1) and a second nut (9SCF000010).



- Reattach PFC Board Panel and reassemble case sides.
- Perform a resistance check across the output studs. The resistance should be at least 500 ohms. Then perform an output test at 300 amps.



Please contact Lincoln Electric with the subject line "SN 20210225-4" if you have any questions or need assistance. If in the United States or Canada email Service@LincolnElectric.com. If in another country contact your local Lincoln Electric Entity.



Jennifer Shafarenko
Manager, Customer Service

⚠ WARNING:

Unauthorized repairs performed on this equipment may result in danger to the technician and machine operator and will invalidate your factory warranty.

Service and repair should only be performed by Lincoln Electric Factory Trained Personnel. If for any reason you do not understand the test procedures or are unable to perform the test/repairs safely, contact the Lincoln Electric Service Department for electrical troubleshooting assistance before you proceed. If in the United States or Canada Call 1-888-935-3877 or email service@lincolnelectric.com. If in another country contact your local Lincoln Electric Entity.